

At the crossroads of simulation and data analytics

Patrice Hauret

For more than three years, the EU-MATHS-IN Industrial Core Team¹ has been developing transverse influences to advertise the role of Digital Twins at the service of European industry, as a key enabler for advanced products and connected services. Digital Twins has also spread to growing areas like health and climate monitoring. Behind this buzzword, the complementarity of first principle modelling and data analytics plays an instrumental role. In the present article, we depict the context and the opportunities, the European environment with its funded programs, some open software platforms, and most importantly a mathematical toolbox to address the underlying challenges, all of which testify to the tremendous vitality of this field.

1 Introduction

When identifying, within EU-MATHS-IN, a subject that would rally a majority of companies, from banks to aeronautics, from the health sector to the need of renewal in the energy business, Digital Twins emerged as a rather natural choice [17].

The concept was first created by NASA. Throughout its entire life cycle, a product or process can be accompanied by a virtual representation, called its Digital Twin. Digital Twins allow novel digital assistance for design optimisation, process control, life-cycle management, predictive maintenance, or risk analysis. Digital Twins have become so important to business today that they were identified as one of Gartner's Top 10 Strategic Technology Trends [18, 27, 47]. They are becoming a business imperative, covering the entire lifecycle of an asset or process and forming the foundation for connected products and services. New business opportunities will emerge, benefitting from the cooperation between large companies, SMEs, startups and academia. To turn this vision into reality, novel mathematical and computer science technologies are required to describe, structure, integrate and interpret across many engineering disciplines.

Supporting this development requires a combination of efforts. High fidelity modelling is key to account for multi-physics and multi-scale systems, and to identify new design levers at the smallest scales. It is often derived from first principle approaches and relies on the power provided by High Performance Computing to deliver the expected prediction in a reasonable time frame. On the other hand, reduced order modelling must provide real-time estimates to enable system optimisation, or in combination with statistical learning to achieve efficient modelling compliant with available data in real time during operation. An example of that kind of need is given by autonomous transport. In particular, corresponding solutions must be realised on the edge to provide sufficiently fast and robust interactions with the real process. The fields of application are growing rapidly in the health sector (e.g., www.digitwin.org) and in climate monitoring [3].

Key to digital twinning is a joint use of data and first principle approaches. In the frequent cases where large amounts of data prove not to be available, this complementarity makes it possible to realise Smart Data concepts, fostering the efficiency and the robustness of predictions and enabling the quantification of associated uncertainties and risks.

The economic impact of related applications is estimated to cover a worldwide market of 90 billion euros per year by 2025. These opportunities are clearly reinforced by the high concentration of simulation firms in Europe, the highest in the world. Europe also benefits from a long-standing proficiency in mathematics. Several reports [11, 14, 15] have additionally shown the economic impact of mathematical sciences in the US, the Netherlands and France. Furthermore, US studies [41] in the past have also highlighted the European strength in the field.

This being said, the combined use of statistical learning and first principle modelling is not new. Model calibration is an old topic. The Kalman filter lay at the core of space conquest, and has been essential in the efficient control of remote systems. There remain, however, several challenges for achieving a clever way of combining simulation methods for complex systems, data collection, correction procedures and uncertainty quantification. Besides this, Digital Twins are expected to become self-learning objects that can actually provide guidance and high level services in op-

¹ ATOS, Bosch, Dassault Aviation, EcoMT, EY, Michelin, NORS Group, Shell, Siemens

eration, digesting sensor data with the help of reduced models. A significant part of these ambitions relies on a set of mathematical methods as well as integrated environments.

2 A favourable environment

2.1 European Commission Programs

Horizon Europe² is a Research and Innovation funding program that is in place until 2027, with a total budget of 95.5 billion euros. Its three pillars are (I) Excellent Science, (II) Global Challenges and European Industrial Competitiveness, (III) Innovative Europe. The European Research Council (President: J.-P. Bourguignon) supports pillar I, while the DG Connect Directorate (Dir: K. Rouhana) specifically supports the present topic, as well as High Performance or Quantum Computing, as part of pillar II. Calls are the mechanisms through which individual projects get funded.

Of key importance is the EuroHPC Joint Undertaking. This is a joint initiative between the EU, European countries and private partners to develop a World Class Supercomputing Ecosystem in Europe. The initiative has two major partners onboard: ETP4HPC and the Big Data Value Association, which reflects the ambition to establish synergies between highly accurate simulations and data analytics. It is also oriented towards large companies and SMEs, in order to boost innovation potential and competitiveness, while widening the use of HPC in Europe. EU-MATHS-IN is involved in the TransContinuum Initiative, as a binding effort between ETP4HPC and BDVA, and contributes to a Strategic Research Agenda coordinated by Zoltán Horváth.

2.2 Some open platforms and funded projects

Open software enables new actors including SMEs, potentially with the help of a proper knowledgeable accompaniment, to access highly technological solutions, develop new ideas and start new businesses depending on associated exploitation rights. It clearly shifts development effort from low-value work to value creation. Open platforms can also act as binding environments to interface commercial products with clear added value. Sharing software components between academia and industry may be a way to reinforce the European momentum on the development of new mathematical algorithms in order to, e.g., take advantage of new European HPC architectures or data-simulation hybridation. The development of better interoperability is expected to accelerate innovation and boost European leadership.

Open software has been developed ranging from simulation tools to data analysis with applications like mechanics or biology. Furthermore, it has clearly evolved to provide integrated environments, especially relying on Python interfacing which is a key element to foster collaboration, to integrate various expertises and to make content widely accessible. Let us mention here two projects supported by the European Community that clearly support this ambition.

MSO4SC

Societal challenges are increasing in complexity, and contributing to their resolution requires a holistic approach. It is necessary to provide decision-makers with tools that allow long-term risk analysis, improvements or even optimisation and control. One of the key technologies in this process is the use of mathematical Modelling, Simulation and Optimisation (MSO) methods, which have proven to be effective tools for solving problems such as the realistic prediction of wind fields, solar radiation, air pollution and forest fires, prediction of climate change, improving the filtration process for drinking water treatment and optimisation methods for intensity-modulated radiation therapy. These methods are highly complex and are typically processed via the most modern tools of ICT, including high performance computing and access to big data bases; they usually require the support of skilled experts, who are often not available, in particular in small and medium-sized businesses. The main goal of this project is to construct an e-infrastructure that provides, in a user-driven, integrative way, tailored access to the necessary services, resources and even tools for fast prototyping, also providing the service producers with the mathematical framework. The e-infrastructure consists of an integrated MSO application catalogue containing models, software, validation and benchmark and the MSO cloud, a user-friendly cloud infrastructure for selected MSO applications and developing frameworks from the catalogue. This will reduce the 'time-to-market' for consultants working on the above-mentioned societal challenges.

Open Dream Kit

OpenDreamKit is a project that brings together a range of projects and associated software to create and strengthen virtual research environments. The most widely-used research environment is the Jupyter Notebook from which computational research and data processing can be directed. The OpenDreamKit project provides interfaces to well-established research codes and tools so that they can be used seamlessly and combined from within a Jupyter Notebook. OpenDreamKit also supports open source research codes directly by investing into structural improvements and new features to not only connect all of these tools, but also enrich them and make them more sustainable.

² ec.europa.eu/info/horizon-europe_en

3 A mathematical toolbox

We emphasise here four complementary perspectives on the joint exploitation of simulation and data: (i) techniques coming from optimal command, ranging from calibration to filtering, that allow identification of hidden parameters, model correction and handling noisy forcing terms, (ii) solution space reduction that enables fast solving and efficient correction, (iii) multi-fidelity co-kriging in order to merge and prioritise the feedback issuing from simulations and measurements on given observables, (iv) physics-inspired neural networks that directly learn the model solution, based on an *a priori* (set of) underlying model(s). Each of these approaches corresponds to a different balance in the roles of physical models and collected data. In this text, we do not claim any exhaustivity, and mathematical descriptions will remain formal. The idea is to provide a fairly broad overview of the field while remaining accessible to the vast majority of mathematician readers.

3.1 Optimal control: From calibration to filtering

General setting

Let Λ be a vector space of parameters. For every $\lambda \in \Lambda$, the solution $u_\lambda \in \mathcal{U}$ of the “best-knowledge” model is defined to be the solution of the partial differential system

$$\mathcal{A}(\lambda, u_\lambda) = 0 \quad \text{in } \mathcal{V}^*,$$

in a weak formal form, where \mathcal{V} is a Hilbert space and \mathcal{V}^* its dual. The parameter space Λ encompasses modelling choices, the domain shape and the boundary conditions, as well as forcing terms.

Additionally, the physical quantity

$$Z: \lambda \in \Lambda \mapsto Z(\lambda) \in \mathcal{Z}$$

is known, potentially with some noise, at the sampling points $(\lambda_k) \in \Lambda$ as (\mathbb{Z}_k) . The purpose of our quest is to take benefit from this information to estimate $Z(\lambda)$ outside the sampling points, or to improve the solution u_λ itself given by the model.

Calibration and model correction. As an example, let us augment Λ into $\Lambda \times \mathcal{V}$ in order to account for a modelling error term in \mathcal{V} as we consider the augmented system

$$\mathcal{A}(\lambda, u_{\lambda, \xi}) + \xi = 0 \quad \text{in } \mathcal{V}^*,$$

where $\xi \in \mathcal{V}$. For each sampling point λ_k , the idea is to find the most adequate parameter λ of the model close to λ_k and the model correction $\xi \in \mathcal{V}$ in order to best account for the measurement \mathbb{Z}_k . The calibration and model correction in the vicinity of λ_k can be formulated as finding

$$(\lambda_k^*, \xi_k^*) = \arg \inf_{\lambda, \xi} \left\{ \frac{1}{2} |J(\lambda, u) - \mathbb{Z}_k|^2 + \frac{\alpha}{2} |\lambda - \lambda_k|^2 + \frac{\beta}{2} |\xi|^2 \right\}, \quad (1)$$

where $\mathcal{A}(\lambda, u) + \xi = 0$ in \mathcal{V}^* , and $|\cdot|$ stands for the Hilbertian norms in \mathcal{Z} , Λ and \mathcal{V} . The scalar coefficients $\alpha, \beta \in \mathbb{R}_+^*$ are taken sufficiently large. As classically given by the techniques of optimal control [30], the solution is characterised by the following system:

$$\mathcal{A}(\lambda, u) - \frac{1}{\beta} p = 0, \quad (2)$$

$$\langle d_u \mathcal{A}, p \rangle_{\mathcal{V}^*, \mathcal{V}} + \Delta \cdot d_u J = 0, \quad (3)$$

$$\langle d_\lambda \mathcal{A}, p \rangle_{\mathcal{V}^*, \mathcal{V}} + \Delta \cdot d_\lambda J + \alpha(\lambda - \lambda_k) = 0, \quad (4)$$

in \mathcal{V}^* , \mathcal{U}^* and Λ^* respectively, with $\Delta = J(\lambda, u) - \mathbb{Z}_k$. Equation (3) is called the adjoint problem and equation (4) defines the gradient of the cost function with respect to λ , that must vanish. The gradient expression enables an iterative calibration in order to avoid the resolution of the coupled system (2)–(3)–(4). One has $\xi_k^* = -\frac{1}{\beta} p$ and we use the notation $p_k^* := p$ in \mathcal{V} .

Once the calibration and error corrections are performed at sampling points, let us introduce the functions $\hat{\lambda}^*(\lambda), \hat{\xi}^*(\lambda), \hat{p}^*(\lambda)$ obtained by kriging under the form

$$\hat{\square}^*(\lambda) = \sum_k f_k(\lambda) \square_k^*, \quad \square \in \{\lambda, \xi, p\},$$

that comply with values $(\lambda_k^*), (\xi_k^*), (p_k^*)$ at sampling points (λ_k) . For every $\lambda \in \Lambda$, an updated model can be formulated as finding the solution $\hat{u}_\lambda \in \mathcal{U}$ such that

$$\mathcal{A}(\hat{\lambda}^*(\lambda), \hat{u}_\lambda) + \hat{\xi}^*(\lambda) = 0 \quad \text{in } \mathcal{V}^*, \quad (5)$$

with the estimator $\hat{Z}(\lambda) = J(\hat{\lambda}^*(\lambda), \hat{u}_\lambda)$. For purposes of efficiency, the spaces \mathcal{U} and \mathcal{V} can be replaced by some reduced basis approximation in (5).

Bayesian inference. Parameters λ and measurements $Z(\lambda)$ can be considered as random variables. The relevance of this point of view is supported by their potential discrete natures and by the uncertainties and noise attached to them. Assume p (resp. q) is the probability density followed by λ (resp. Z). Bayesian inference provides the conditional density

$$p(\lambda|Z) = \frac{q(Z|\lambda)p(\lambda)}{\int q(Z|\lambda)p(\lambda) d\lambda} \propto q(Z|\lambda)p(\lambda),$$

where $p(\lambda)$ is called the prior, i.e., the *a priori* distribution expected on λ ; $q(Z|\lambda)$ is the output likelihood given λ , i.e., the uncertainty on the output measurement or simulation. It results in an assessment of the $\lambda|Z$ distribution, known as posterior, that can be used as a new prior and so on, until uncertainties are judged satisfactory [22, 26].

From a practical standpoint, a Markov Chain Monte Carlo approach can be used to simulate samples according to the distribution followed by λ , and a surrogate model – for instance relying on reduced bases – can be used to diminish the computational cost required to determine the output Z .

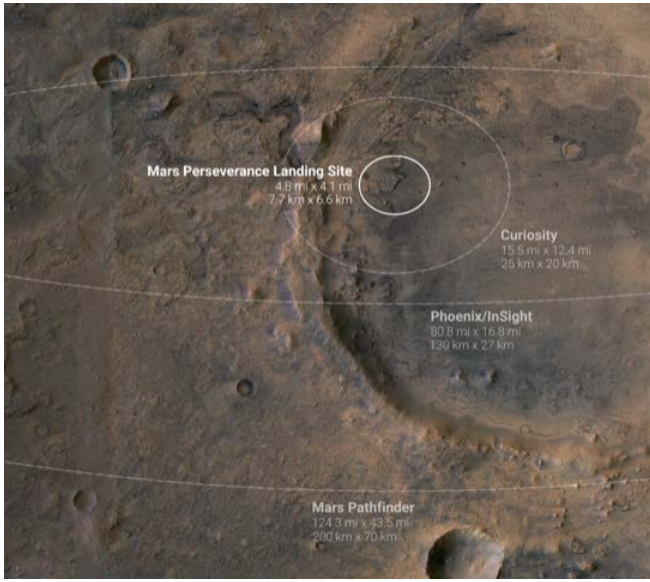


Figure 1. Perseverance Rover landing map on Mars (Credit: ESA/DLR/FU-Berlin/NASA/JPL-Caltech, visit mars.nasa.gov/mars2020)

Selection of parameters. In order to make the approaches as efficient as possible, the parametric space Λ must be reduced. A rather natural approach relies on variance decomposition, i.e. on the identification of subspaces within Λ for which the covariance matrix $\mathbb{E}[Z' \otimes Z']$ possesses the largest components; $Z' = Z - \mathbb{E}(Z)$. This can be done by Sobol decomposition or Principal Component Analysis for linear models [23]. Observe that in the vicinity of λ , the privileged most influential subspaces are given by the singular value decomposition of $d_\lambda Z \otimes d_\lambda Z$ in $T_\lambda \Lambda \times T_\lambda \Lambda$, the differential being computed by the adjoint method.

Sometimes, the parameters correspond to local characteristics of the model, such as material laws, and can be selected without involving the full resolution of the model. This is the case in Ortiz et al. [24, 28], which rely on local measurements or simulations with a closest-point projection approach.

Filtering: From space conquest to cardiovascular modelling

The complementarity between first principle modelling and data analytics was pioneered in a unique manner by space conquest. This clever combination makes it possible to benefit from the predictive power of simple dynamic models and the ability to cope with noise and uncertainties within the environment; as a result, it offers the possibility of automated decisions when long transmission times allow for neither full real-time feedback on the system state nor efficient human steering. We describe the main associated ideas within a linear framework; cf. [5, 6, 13, 30].

Filtering and optimal control. The above motivation was the main boost for the development of Kalman filtering, which is closely related to optimal control. Let $u(t) \in \mathbb{R}^n$ describe the state of the system at time $t \in [0, T]$ such that

$$\dot{u} = Au + B\lambda + F, \quad u(0) = u_0 + \xi, \quad (6)$$

where $\lambda \in \mathbb{R}^p$, $p < n$, stands for an unknown forcing contribution and ξ for the uncertainty on the initial condition. Measurements $Z = Hu + \varepsilon \in \mathbb{R}^m$ over $[0, T]$, with $m < n$, up to an error ε , are available in order to help estimate the real trajectory, through the determination of λ and ξ such that

$$\frac{1}{2} |\xi|_N^2 + \frac{1}{2} \int_0^T |Hu - Z|_M^2 + \frac{1}{2} \int_0^T |\lambda|_L^2$$

is infimised. Optimality is achieved for $\lambda(t) = L^{-1}B^\top p(t)$ and $\xi = N^{-1}p(0)$, where the adjoint state p is a solution of the backward system in time

$$\dot{p} = -A^\top p + H^\top M(Hu - Z), \quad p(T) = 0.$$

In order to avoid the difficulty of a two-end problem in u and p , the optimal solution u can be proven to decompose as $u = \hat{u} + Pp$, where P is the operator solution from Riccati's equation

$$\dot{P} - PA^\top - AP + PH^\top MHP - BL^{-1}B^\top = 0, \quad P(0) = N^{-1}.$$

The component \hat{u} obeys the filtered dynamics

$$\dot{\hat{u}} = A\hat{u} + F + K(Z - H\hat{u}), \quad \hat{u}(0) = u(0),$$

where $K = PH^\top M$ is Kalman's gain; it reaches the optimal trajectory at time $t = T$, as $p(T) = 0$. Beyond this Linear Quadratic setting, filtering can incorporate robust control, and adapt in many ways to the case of nonlinear systems (Extended Kalman Filter, Unscented Kalman Filter).

Hamilton–Jacobi–Bellman. Dynamic programming is of particular importance in order to proceed to nonlinear extensions. For every $q \in \mathbb{R}^n$ and $t \in [0, T]$, let us define the cost-to-come function

$$V(q, t) = \min_{\lambda; u(t)=q} \left\{ \frac{1}{2} |\xi|_N^2 + \frac{1}{2} \int_0^t |Hu - Z|_M^2 + \frac{1}{2} \int_0^t |\lambda|_L^2 \right\},$$

where the minimum is taken over controls $\tau \in [0, t] \mapsto \lambda(\tau) \in \mathbb{R}^p$ and trajectories $\tau \in [0, t] \mapsto u(\tau) \in \mathbb{R}^n$ with end-points $u(0) = u_0 + \xi$ and $u(t) = q$. The cost function V is a solution of the Hamilton–Jacobi–Bellman equation

$$\dot{V} - \mathcal{H}^*(u, \nabla_u V(u, t), t) = 0,$$

in the sense of viscosity solutions, where

$$\mathcal{H}^*(u, p; t) = \mathcal{H}(u, p, L^{-1}B^\top p; t),$$

$$\mathcal{H}(u, p, \lambda; t) = \frac{1}{2} |Hu - Z|_M^2 + \frac{1}{2} |\lambda|_L^2 - \langle Au + B\lambda + F, p \rangle.$$

Observe that the optimality equations above read

$$\dot{u} = -\frac{\partial \mathcal{H}^*}{\partial p}, \quad \dot{p} = \frac{\partial \mathcal{H}^*}{\partial u}.$$

Taking $V(u, 0) = \frac{1}{2} |u - u_0|_N^2$ as an initial condition, let us assume the HJB equation admits a solution $V \in C^1(0, T; \mathbb{R}^n)$. Then, for all $t \in [0, T]$ the optimal command is given by

$$\lambda^*(t) = \arg \min_{\lambda \in \mathbb{R}^p} \mathcal{H}(u(t), \nabla_u V(u(t), t), \lambda, t).$$

This provides the estimated dynamics

$$\dot{\hat{u}} = A\hat{u} + F - (\nabla_u^2 V)^{-1} H^T M (Z - H\hat{u}), \quad \hat{u}(0) = u_0.$$

In the present linear setting, one has [37]

$$V(u, t) = \frac{1}{2} (u - \hat{u}(t))^T P(t)^{-1} (u - \hat{u}(t)) + \frac{1}{2} \int_0^t |H\hat{u}(s) - Z(s)|_M^2 ds.$$

Stochastic perspective. Assume equation (6) is interpreted as a stochastic differential equation, where $\lambda(t)$ and $\varepsilon(t)$ are zero-mean independent Gaussian processes with covariance matrices Q and R respectively. The best mean square estimator $\hat{u}(t) = \mathbb{E}[u(t)|Z(t)]$ follows the same equation as in the previous paragraphs with $M = R^{-1}$ and $L = Q^{-1}$. The covariance matrix $P(t) = \mathbb{E}[(u - \hat{u}) \otimes (u - \hat{u})]$ obeys Riccati's equation.

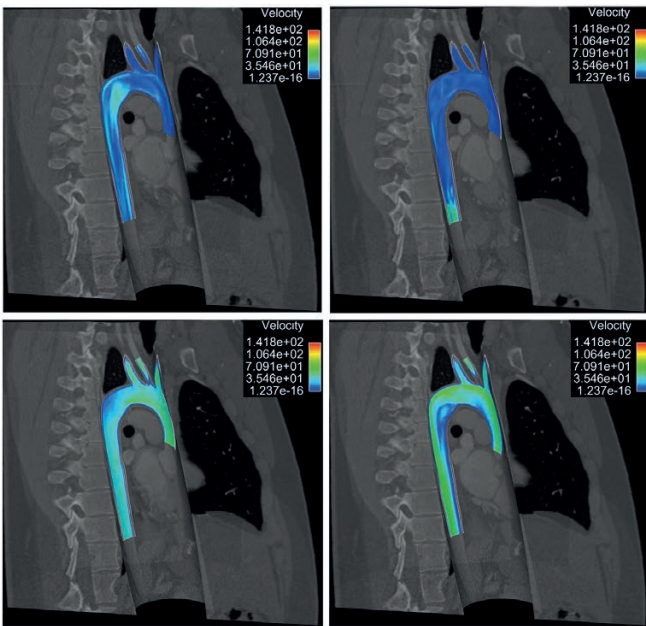


Figure 2. Aortic simulation for which viscoelastic boundary conditions are calibrated from medical imaging (courtesy of Moireau et al., see [38]).

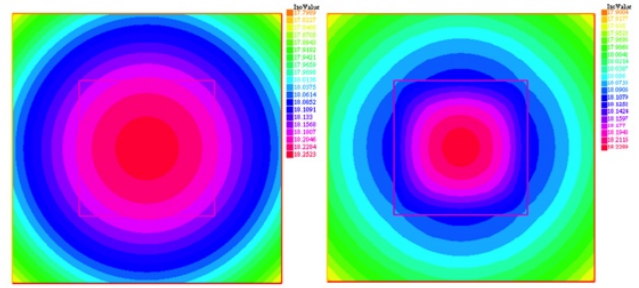


Figure 3. Heat equation resolved from an initial condition to a given end-time. The best-knowledge model uses single material, when the true solution corresponds to a bi-material. 121 measurement points are spread over the domain. Left: solution for the bk model (values from 17.80 °C to 18.25 °C). Right: Synthetic true solution using a bi-material plate (values from 17.90 °C to 18.23 °C) relying on seven basis vectors (courtesy of Benaceur, see [4]).

Stability and control. Kalman's gain achieves control optimality in the sense detailed above. Nevertheless, it can prove costly to determine, and difficult to access for distributed systems. As a matter of fact, some feedback terms acting as Lyapunov functions can suffice for practical purposes. Let us assume in the above that the gain K is chosen in the form $K = \alpha H^T \mathcal{M}$ with a symmetric definite positive matrix \mathcal{M} and a coefficient α to determine. It follows that the error $e = u - \hat{u}$ satisfies

$$\dot{e} = (A - KH)e + B\lambda - K\varepsilon, \quad e(0) = \varepsilon,$$

and can be made rapidly decreasing provided that λ and ε remain moderate and α is taken sufficiently large. This approach has been implemented with multiple refinements by Moireau et al. [39], comparing in-depth the displacement vs. velocity controls.

3.2 Solution space reduction

Reduced bases. The notion of reduced bases makes it possible to resolve the equations of the model in a low-dimensional subspace of solutions, rather than a large full finite element space for instance. It is reputed to go back to Rayleigh's intuition, and is key to benefit from surrogate models that comply with the first physical principles, with high computational efficiency. It is particularly useful for high-dimensional models, as in Quantum Mechanics for instance. The approach has been made particularly popular by the work of Maday, Patera et al. [32]. Some interesting challenges rise when handling highly nonlinear problems [33]; it is particularly striking when contact mechanics is involved [4], when structure preservation is concerned [20, 21], or when local accuracy is of particular importance [46]. The efficiency of the method is well established when the Kolmogorov n -width of the solution manifold rapidly decreases as $n \rightarrow +\infty$; cf. [2, 8].

Reduced order bases allow physical models to be interrogated (almost) as efficiently as data sets, making it possible to foster standard statistical learning methods [1, 19].

Parameterised-Background Data-Weak (PBDW) approach. Let

$$\mathcal{M}^{\text{bk}} := \{u^{\text{bk}}(\lambda); \lambda \in \Lambda\} \subset \mathcal{U}$$

be the solution manifold for the “best-knowledge” model. It can be gradually approximated with diminishing errors by solutions of the model in reduced spaces $\mathcal{R}_1 \subset \dots \subset \mathcal{R}_N \subset \dots \subset \mathcal{U}$.

The true solution $u^{\text{true}} \in \mathcal{U}$ is unknown, but can be partially captured by experimental observations $\ell_m^{\text{obs}} \in \mathcal{U}^*$ given as continuous linear forms of the solution: $1 \leq m \leq M$. They provide the scalar quantities $\mathbb{Z}_m = \ell_m^{\text{obs}}(u^{\text{true}}) \in \mathbb{R}$. Let us write (q_m) for the associated liftings satisfying $(q_m, v) = \ell_m^{\text{obs}}(v)$ for all $v \in \mathcal{U}$, where (\cdot, \cdot) denotes the inner product in the Hilbert space \mathcal{U} . It is imperative that the sensors be numerous enough ($N \leq M$) to control the components of the reduced solution in the selected space \mathcal{R}_M ; more specifically, one must have $\mathcal{R}_N \cap \mathcal{U}_M^\perp = \{0\}$ where \mathcal{U}_M^\perp is orthogonal to $\mathcal{U}_M := \text{span}\{q_m, 1 \leq m \leq M\}$ in \mathcal{U} .

The PBDW method [34–36] determines the approximation $u_{N,M}$ of the solution u^{true} in the form

$$u_{N,M} = r_{N,M} + \eta_{N,M} \in \mathcal{R}_M \oplus \mathcal{U},$$

where

$$(u_{N,M}, q) = (u^{\text{true}}, q) \quad \text{for all } q \in \mathcal{U}_M, \quad (7)$$

and the norm $\|\eta_{N,M}\|_{\mathcal{U}}$ is infimised. It boils down to finding $r_{N,M} \in \mathcal{R}_M$ and $\eta_{N,M} \in \mathcal{U}_M$ such that

$$\begin{aligned} (r_{N,M}, q) + (\eta_{N,M}, q) &= (u^{\text{true}}, q) \quad \text{for all } q \in \mathcal{U}_M, \\ (\eta_{N,M}, r) &= 0 \quad \text{for all } r \in \mathcal{R}_N. \end{aligned}$$

This has been extended to a dynamic setting by Benaceur [4], in collaboration with Patera. The method allows for a real-time correction of the solution, based upon available measurements. In case of noisy measurements, a regularisation is required and the following functional:

$$\gamma \|\eta_{N,M}\|_{\mathcal{U}}^2 + \frac{1}{M} \sum_{m=1}^M |\ell_m^{\text{obs}}(r_{N,M} + \eta_{N,M}) - \mathbb{Z}_m|^2, \quad \gamma > 0,$$

is infimised in order to compromise between the minimisation of the term $\|\eta_{N,M}\|_{\mathcal{U}}$ and the constraint (7), thus avoiding overfitting.

Data-driven reduced modelling. Each time the above reconstruction generates a prediction $u_{N,M}(\lambda_k)$ for a given state $\lambda_k \in \Lambda$ of the system, the vector $u^{\text{bk}}(\lambda_k)$ can be replaced by $u_{N,M}(\lambda_k)$ in the reduced basis for the system. This can be done by the dynamic reduced basis low rank adaption proposed by Peherstorfer and Wilcox [42].

Another point of view consists in fitting the expression of the operators involved in the best-knowledge model, when projec-

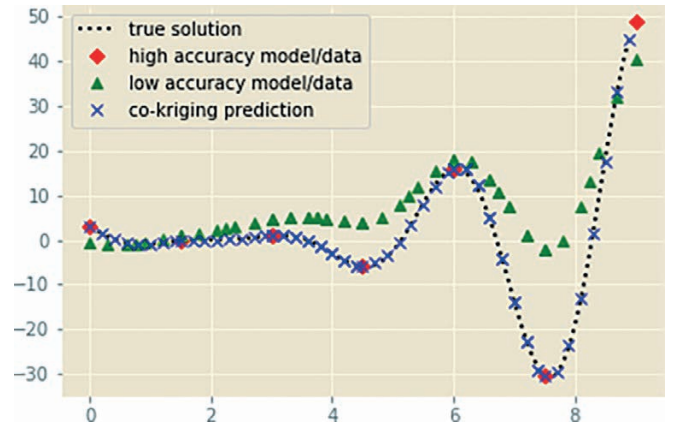


Figure 4. Co-kriging makes it possible to take joint advantage of (i) accurate but costly data (in red) and (ii) fast but inaccurate models (in green); computed using OpenMDAO and Scikit Learn Python packages.

ted onto an *a priori* reduced basis. This idea was proposed by Peherstorfer and Wilcox [43], who named it operator inference.

Finally, composite spaces can be constructed by the assembling of subdomains in which key driving parameters are retained and local reduced bases are adopted; coupling between subdomains can be performed via Lagrange multipliers, and the hidden parameters (for instance describing certain levels of damage within a structure) can be determined by statistical classification methods. Such approaches have been developed by Patera et al., and are called Port-Reduced Reduced-Basis Component (PR-RBC) methods; cf. [7, 16, 48].

Tensor approximation of solutions. Since functions in separable form are dense in spaces of sufficiently regular functions, one can decompose the solution of the parameterised model problem in the form

$$u_\lambda = \sum_{\ell} w_\ell(\lambda) u_\ell \quad \text{in } \mathcal{U}, \quad \text{for all } \lambda \in \Lambda,$$

by means of Proper Generalised Decompositions [10]. Of course, λ can easily incorporate a wide variety of correction terms, so as to account for the current state of the system. This general philosophy has been widely popularised by Chinesta and Nouy; see [9, 40] and the references therein.

3.3 Multi-fidelity prediction and co-kriging

In many practical cases, several sources of information (simulation and measurement campaigns) provide predictions of various accuracies for the observables. Let Λ be the parameter space under consideration. For every $1 \leq j \leq J$, the j -th measurement or simulation campaign is performed at sampling points $D_j = (\lambda_k^j)_{1 \leq k \leq K_j}$ with the model Z_j and provides data points $\mathbb{Z}_{j,k} = Z_j(\lambda_k^j)$. The

accuracy increases with j and the most accurate forecast therefore corresponds to $j = J$.

Kriging. We set $j = 1$, and recall the construction of the universal kriging $\hat{Z}_1(\lambda)$ as a non-biased approximation of $Z_1(\lambda)$ with minimum variance in the form

$$\hat{Z}_1(\lambda) = \sum_{k=1}^{K_1} w_{1;k}(\lambda) \mathbb{Z}_{1;k} = w_1(\lambda)^\top \mathbb{Z}_1.$$

Universal kriging additionally assumes that $Z_1(\lambda)$ is a Gaussian process with unknown average of the form

$$\mathbb{E}(Z_1(\lambda)) = \sum_{i=1}^{I_1} f_{1;i}(\lambda) \theta_{1;i} = f_1(\lambda)^\top \theta_1,$$

and space correlation $\sigma_1^2 r_1(\lambda, \lambda'; \theta)$, where σ_1 is a variance scaling factor and θ a parameter of the space-correlation function r_1 . The parameters θ_1 , σ_1 and θ can be determined through maximum likelihood. The non-biased minimum variance predictor is achieved for $w_1(\lambda) = C^{-1}(c(\lambda) + F^\top (FC^{-1}F^\top)^{-1}b(\lambda))$, where the matrices F, C are given by their components

$$F_{ik} = f_{1;i}(\lambda_k^1), \quad C_{k\ell} = \text{cov}(\mathbb{Z}_{1;k}, \mathbb{Z}_{1;\ell}),$$

and the vectors c, b by

$$c_k(\lambda) = \text{cov}(Z_1(\lambda), \mathbb{Z}_{1;k}), \quad b(\lambda) = f_1(\lambda) - FC^{-1}c(\lambda).$$

Recursive co-kriging. Co-kriging was pioneered by Kennedy and O'Hagan [25]. The recursive multi-fidelity adaptation introduced by Le Gratiet and Garnier [29] reads

$$\begin{cases} Z_{j+1}(\lambda) = \rho_j(\lambda) \tilde{Z}_j(\lambda) + \delta_j(\lambda), \\ \tilde{Z}_j(\lambda) \text{ independent of } \delta_j(\lambda), \\ \rho_j(\lambda) = g_j(\lambda)^\top \gamma_j, \end{cases}$$

where the following Gaussian processes are defined by their means and covariance matrices as

$$\begin{aligned} \delta_j(\lambda) &\sim \text{GP}(f_j(\lambda)^\top \theta_j; \sigma_j^2 r_j(\lambda, \lambda')), \\ Z_1(\lambda) &\sim \text{GP}(f_1(\lambda)^\top \theta_1; \sigma_1^2 r_1(\lambda, \lambda')); \end{aligned}$$

$\tilde{Z}_j(\lambda)$ is a Gaussian process with distribution

$$[Z_j(\lambda) | Z^{(j)} = \mathbb{Z}^{(j)}, \theta_j, \gamma_{j-1}, \sigma_j^2],$$

where $Z^{(j)} = (Z_1(D_1), \dots, Z_j(D_j))$ and $\mathbb{Z}^{(j)} = (\mathbb{Z}_1, \dots, \mathbb{Z}_j)$.

The combined use of reduced models, full accuracy simulations and measurements clearly allow for very efficient and accurate surrogate models. The co-kriging above, further developed in [44], has the huge advantage of recursiveness and as a result, a very accessible computational cost.

3.4 Physics-Informed Neural Network

Neural networks have had great success with classification problems, together with Support Vector Machines for instance [1]. They generate functions that are dense among continuous functions (cf. Cybenko [12]), and conciliate smoothness with the ability to represent thresholds quite accurately. Fitting can be performed by a back descent gradient inspired by optimal control techniques. Furthermore, robust and powerful Python libraries, like TensorFlow, are freely available.

Physics-Informed Neural Networks were introduced by Raissi, Perdikaris and Karniadakis [45]. They combine the statistical learning of the solution, say u on the space-time domain $[0, T] \times \Omega$ sampled on points (t^n, x_i) as u_i^n , under the penalised constraint that u is expected to resolve a partial differential equation of the form $\mathcal{A}(u) = 0$ in $[0, T] \times \Omega$. This reads as the infimisation

$$\inf_{\tilde{u}} \left\{ \sum_{n,i} |\tilde{u}(t_n, x_i) - u_i^n|^2 + \sum_{n,i} |\mathcal{A}(\tilde{u})(t^n, x_i)|^2 \right\},$$

which is close to (1) when $J(\lambda, u) = u$. A Bayesian approach can be used to identify the parameters from the model, as developed in [49]. Lucor et al. have developed the approach for the thermo-mechanical simulation of an incompressible viscous flow [31]; cf. Figures 5 and 6.

4 Conclusion

The combined use of first principle models and data analytics is an avenue for predictive sciences. It is a privileged way to synergise the modelling knowledge present in simulation software with the relevance of available data, while guaranteeing a high level of predictiveness in operation. Beyond the necessity of a growing mathematical toolbox to handle problems of optimal control with extreme efficiency, several challenges are implied: (i) the necessity of developing porosity at the interface between competences (numerical analysis, optimal control and automatism, high performance computing, statistics, computer sciences), (ii) the need for integrated development environments, with a role to play in the question of open software, and (iii) data protection, as data becomes an outstanding source of value.

Acknowledgement. I thank Krzysztof Burnecki for the kind invitation to write this article. I am indebted to Philippe Moireau, Amina Benaceur, Didier Lucor and Anne Sergent for providing the illustrations displayed in Section 3, and for our exchanges on the corresponding advances. The promotion of Digital Twins also owes thanks to my colleagues from the EU-MATHS-IN Industrial Core Team, with special thanks to Dirk Hartman, Zoltán Horváth, Wil Schilders, Cor van Kruijsdijk and Hubert Tardieu. In this regard, Section 1 presents several collective statements.

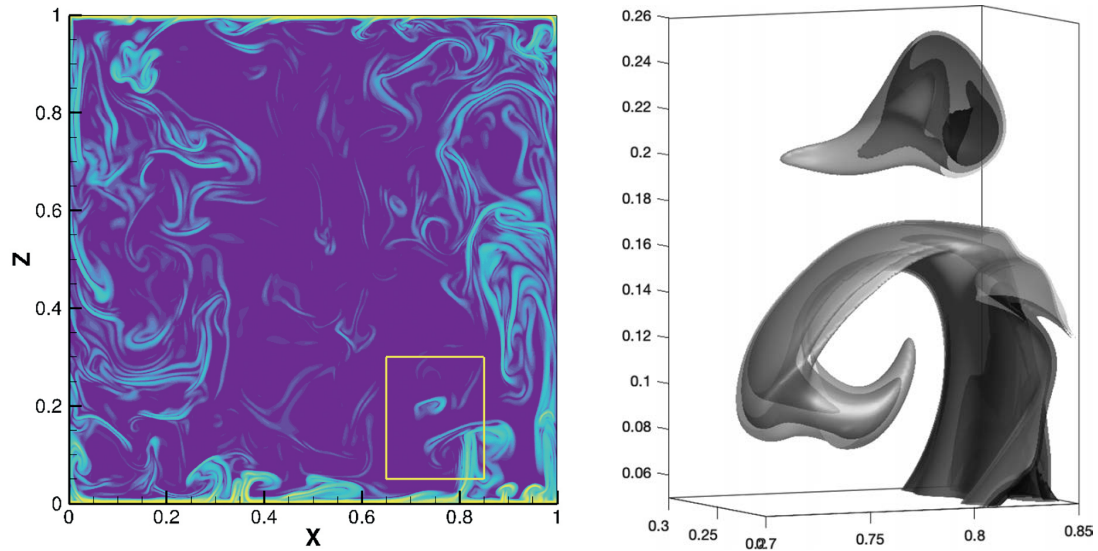


Figure 5. Left: computation domain containing an incompressible viscous flow heated at the bottom (the yellow box materialises the training subdomain); right: iso-temperature surfaces as reconstructed in the training subdomain by the Physics-Inspired Neural Network (courtesy of Didier Lucor, Atul Agrawal and Anne Sergent; see [31]).

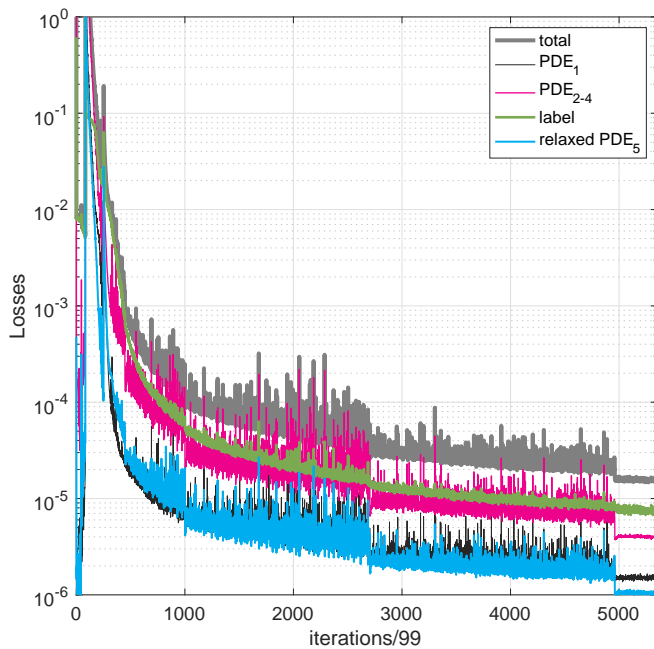


Figure 6. Learning curve displaying the cost function to infimise along with iterations (courtesy of Didier Lucor, Atul Agrawal, and Anne Sergent; see [31]).

References

- [1] Y. S. Abu-Mostafa, M. Magdon-Ismaïl and H-T. Lin, *Learning from Data*. AMLbook.com (2012)
- [2] M. Barrault, Y. Maday, N. C. Nguyen and A. T. Patera, An ‘empirical interpolation’ method: application to efficient reduced-basis discretization of partial differential equations. *C. R. Math. Acad. Sci. Paris* **339**, 667–672 (2004)
- [3] P. Bauer, B. Stevens and W. Hazeleger, A digital twin of earth for the green transition. *Nature Climate Change* **11**, 80–83 (2021)
- [4] A. Benaceur, *Réduction de modèles en thermo-mécanique*. PhD thesis, Paris Est University (2018)
- [5] A. Bensoussan, *Filtrage optimal des systèmes linéaires*. Dunod (1971)
- [6] A. Bensoussan, *Stochastic Control of Partially Observable Systems*. Cambridge University Press, Cambridge (1992)
- [7] M. A. Bhourî and A. Patera, A two-level parameterized model-order reduction approach for time-domain elastodynamics. *Comput. Methods Appl. Mech. Engrg.* **385**, 114004 (2021)
- [8] P. Binev, A. Cohen, W. Dahmen, R. DeVore, G. Petrova and P. Wojtaszczyk, Convergence rates for greedy algorithms in reduced basis methods. *SIAM J. Math. Anal.* **43**, 1457–1472 (2011)
- [9] F. Chinesta, E. Cueto, E. Abisset-Chavanne, J. L. Duval and F. El Khaldi, Virtual, digital and hybrid twins: a new paradigm in data-based engineering and engineered data. *Arch. Comput. Methods Eng.* **27**, 105–134 (2020)
- [10] F. Chinesta and P. Ladevèze (eds.), *Separated Representations and PGD-Based Model Reduction*. CISM International Centre for Mechanical Sciences. Courses and Lectures 554, Springer, Vienna (2014)

- [11] CMI, Etude de l'impact socio-économique des mathématiques en France [CMI, A study of the socio-economical impact of mathematics in France] (2015)
- [12] G. Cybenko, Approximation by superpositions of a sigmoidal function. *Math. Control Signals Systems* **2**, 303–314 (1989)
- [13] B. d'Andréa Novel and M. Cohen de Lara, *Commande linéaire des systèmes dynamiques*. Modélisation. Analyse. Simulation. Commande. [Modeling. Analysis. Simulation. Control], Masson, Paris (1994)
- [14] Deloitte, Measuring the economic benefits of mathematical sciences research in the UK. Deloitte (2012)
- [15] Deloitte, Mathematical sciences and their value for the Dutch economy. Deloitte (2014)
- [16] J. L. Eftang and A. T. Patera, Port reduction in parametrized component static condensation: approximation and *a posteriori* error estimation. *Internat. J. Numer. Methods Engrg.* **96**, 269–302 (2013)
- [17] EU-MATHS-IN Industrial Core Team, Modelling, simulation and optimization in a data rich environment: a window of opportunity to boost innovation in Europe. Foundation EU-MATHS-IN, European Service Network of Mathematics for Industry (2018)
- [18] D. Hartmann and H. Van der Auweraer, Digital twins. Siemens. arXiv:2001.09747 (2019)
- [19] T. Hastie, R. Tibshirani and J. Friedman, *The Elements of Statistical Learning*. 2nd ed., Springer Series in Statistics, Springer, New York (2009)
- [20] P. Hauret, Multiplicative reduced basis for elasticity. submitted (2021)
- [21] J. Hesthaven and C. Pagliantini, Structure-preserving reduced basis methods for Hamiltonian systems with a nonlinear Poisson structure (2018)
- [22] D. Higdon, J. Gattiker, B. Williams and M. Rightley, Computer model calibration using high-dimensional output. *J. Amer. Statist. Assoc.* **103**, 570–583 (2008)
- [23] B. Iooss and P. Lemaître, A review on global sensitivity analysis methods. In *Uncertainty Management in Simulation-Optimization of Complex Systems*, Oper. Res./Comput. Sci. Interfaces Ser. **59**, Springer (2015)
- [24] K. Karapiperis, L. Stainier, M. Ortiz and J. E. Andrade, Data-driven multiscale modeling in mechanics. *J. Mech. Phys. Solids* **147**, 104239, 16 (2021)
- [25] M. C. Kennedy and A. O'Hagan, Predicting the output from a complex computer code when fast approximations are available. *Biometrika* **87**, 1–13 (2000)
- [26] M. C. Kennedy and A. O'Hagan, Bayesian calibration of computer models. *J. R. Stat. Soc. Ser. B Stat. Methodol.* **63**, 425–464 (2001)
- [27] M. Kerremans, D. Cearley, A. Velosa and M. Walker, Top 10 strategic technology trends for 2019: digital twins. www.gartner.com/en/documents/3904569/top-10-strategic-technology-trends-for-2019-digital-twin, Gartner (2019)
- [28] T. Kirchdoerfer and M. Ortiz, Data-driven computational mechanics. *Comput. Methods Appl. Mech. Engrg.* **304**, 81–101 (2016)
- [29] L. Le Gratiet and J. Garnier, Recursive co-kriging model for design of computer experiments with multiple levels of fidelity. *Int. J. Uncertain. Quantif.* **4**, 365–386 (2014)
- [30] J.-L. Lions, *Contrôle optimal de systèmes gouvernés par des équations aux dérivées partielles*. Dunod, Paris; Gauthier-Villars, Paris (1968)
- [31] D. Lucor, A. Agrawal and A. Sergent, Physics-aware deep neural networks for surrogate modeling of turbulent natural convection, preprint, arXiv:2103.03565 (2021)
- [32] Y. Maday, Reduced basis method for the rapid and reliable solution of partial differential equations. In *International Congress of Mathematicians. Vol. III*, Eur. Math. Soc., Zürich, 1255–1270 (2006)
- [33] Y. Maday, N. C. Nguyen, A. T. Patera and G. S. H. Pau, A general multipurpose interpolation procedure: the magic points. *Commun. Pure Appl. Anal.* **8**, 383–404 (2009)
- [34] Y. Maday, A. T. Patera, J. D. Penn and M. Yano, A parameterized-background data-weak approach to variational data assimilation: formulation, analysis, and application to acoustics. *Internat. J. Numer. Methods Engrg.* **102**, 933–965 (2015)
- [35] Y. Maday, A. T. Patera, J. D. Penn and M. Yano, PBDW state estimation: noisy observations; configuration-adaptive background spaces; physical interpretations. In *CANUM 2014 – 42e Congrès National d'Analyse Numérique*, ESAIM Proc. Surveys **50**, EDP Sci., Les Ulis, 144–168 (2015)
- [36] Y. Maday and T. Taddei, Adaptive PBDW approach to state estimation: noisy observations; user-defined update spaces. *SIAM J. Sci. Comput.* **41**, B669–B693 (2019)
- [37] P. Moireau, A discrete-time optimal filtering approach for non-linear systems as a stable discretization of the Mortensen observer. *ESAIM Control Optim. Calc. Var.* **24**, 1815–1847 (2018)
- [38] P. Moireau, C. Bertoglio, N. Xiao, C. A. Figueroa, C. A. Taylor, D. Chapelle and J.-F. Gerbeau, Sequential identification of boundary support parameters in a fluid-structure vascular model using patient image data. *Biomechanics and Modeling in Mechanobiology* **12**, 475–496 (2012)
- [39] P. Moireau, D. Chapelle and P. Le Tallec, Filtering for distributed mechanical systems using position measurements: perspectives in medical imaging. *Inverse Problems* **25**, 035010, 25 (2009)
- [40] A. Nouy, Proper generalized decompositions and separated representations for the numerical solution of high dimensional stochastic problems. *Arch. Comput. Methods Eng.* **17**, 403–434 (2010)
- [41] NSF and WTEC, www.nsf.gov/pubs/reports/sbes_final_report.pdf; www.wtec.org/sbes/SBES-GlobalFinalReport.pdf.
- [42] B. Peherstorfer and K. Willcox, Dynamic data-driven reduced-order models. *Comput. Methods Appl. Mech. Engrg.* **291**, 21–41 (2015)
- [43] B. Peherstorfer and K. Willcox, Data-driven operator inference for noninvasive projection-based model reduction. *Comput. Methods Appl. Mech. Engrg.* **306**, 196–215 (2016)
- [44] P. Perdikaris, D. Venturi, J. O. Royset and G. E. Karniadakis, Multi-fidelity modelling via recursive co-kriging and Gaussian–Markov random fields. *Proc. R. Soc. A.* **471** (2015)

- [45] M. Raissi, P. Perdikaris and G. E. Karniadakis, Physics-informed neural networks: a deep learning framework for solving forward and inverse problems involving nonlinear partial differential equations. *J. Comput. Phys.* **378**, 686–707 (2019)
- [46] S. Riffaud, M. Bergmann, C. Farhat, S. Grimberg and A. Iollo, The DGDD method for reduced-order modeling of conservation laws. *J. Comput. Phys.* **437**, 110336, 19 (2021)
- [47] Digital twins – explainer video. youtu.be/ObGhB9CCHP8, Siemens AG (2019)
- [48] T. Taddei, J. D. Penn, M. Yano and A. T. Patera, Simulation-based classification: a model-order-reduction approach for structural health monitoring. *Arch. Comput. Methods Eng.* **25**, 23–45 (2018)
- [49] L. Yang, X. Meng and G. E. Karniadakis, B-PINNs: Bayesian physics-informed neural networks for forward and inverse PDE problems with noisy data. *J. Comput. Phys.* **425**, 109913, 23 (2021)

Patrice Hauret is research director at Michelin, head of Modelling, Data and Physical Analysis. He has held several managing R & D positions in the development of innovative tires and technologies. He holds a Ph.D. in Applied Mathematics from the École Polytechnique and was a postdoctoral fellow at the California Institute of Technology. He completed the French Habilitation to Direct Research (HDR). His scientific contributions are mainly in the fields of Elastodynamics, Approximation Methods, Multi-Scale and Domain Decomposition Methods. He was awarded the École Polytechnique Ph.D. Award in 2005 and the Felix Klein Prize from the European Mathematical Society in 2016. He is a member of several advisory boards committed to open innovation and to the economic impact of mathematical sciences in France and Europe.

patrice.hauret@gmail.com

PAUL SCHERRER INSTITUT



Head of the Laboratory for Simulation and Modeling (LSM)

at the Paul Scherrer Institute (PSI)

and



Professor of Applied & Computational Mathematics

at the Ecole polytechnique fédérale de Lausanne (EPFL)

The Paul Scherrer Institut (PSI) is Switzerland's largest research institute for natural and engineering sciences, and a world leading user laboratory. It develops and operates large-scale research infrastructures that require exceptionally high standards of know-how and technology. With more than 2000 employees, it is an autonomous institution of the Swiss ETH domain.

EPFL is a leading university with a strong emphasis on basic science, engineering, and life sciences. Research and teaching within its School of Basic Sciences includes computational mathematics, high-performance computing, large-scale simulation, and scientific data analysis.

Together, we are jointly seeking to appoint a dynamic personality with strategic thinking abilities as Head of the Laboratory for Simulation and Modeling (LSM) at PSI, and as tenured Full Professor of Applied and Computational Mathematics at EPFL. This is a full-time position.

The Challenge

As Head of the LSM, you will provide vision and strategic leadership in establishing LSM as PSI's central computational research and support unit for the simulation and modeling of complex dynamical systems, as they occur in advanced particle accelerators and innovative nuclear reactors, computational multiphase fluid dynamics in large-scale engineering applications, as well as modeling of catalytic and electrochemical processes in sustainable energy conversion and storage. An integral part of the LSM mission is supporting the design and interpretation of experiments conducted at the institute's research facilities, ranging from test rigs for renewable and nuclear energy applications to PSI's large-scale infrastructures, e.g. the Swiss Light Source (SLS), the Swiss Spallation Neutron Source (SINQ), and the Swiss Free Electron Laser (SwissFEL). Moreover, you will direct cutting-edge research performed at LSM with focus on (1) predictive and multi-scale simulation of complex multi-physics and time-dependent processes, and (2) the analysis of vastly growing amounts of experimental and simulation data, including the accompanying uncertainty and sensitivity quantification methods, and the latest developments in data science and machine learning techniques.

As Professor of Applied and Computational Mathematics at EPFL, you will provide strong academic leadership in applied/computational mathematics and simulation/data science with an emphasis on physics and engineering applications, and foster cooperation with other units at EPFL working in modeling, high-performance computing, and data science.

With the research activities being primarily located at PSI, demonstrated research excellence in the development and analysis of methods for data-intensive science and high-performance computing in a multi-physics context is expected. Due to the multi- and interdisciplinarity of the LSM, we are looking for a strongly integrative personality with a wide background in natural and engineering sciences. Demonstrated leadership experience and scientific management skills, as well as a strong interest for teaching and education are essential.

Applications including a motivation letter, a curriculum vitae with a list of research outputs, a statement of research (max. 3 pages) and teaching interests (max. 1 page), as well as the contact information of at least five references who are ready to supply their letter upon request, should be submitted in PDF format via

<https://facultyrecruiting.epfl.ch/position/33980418>

by October 31, 2021.

Enquiries may be addressed to the Co-Chairs of the search committee:

Prof. Victor Panaretos

Director of the Institute of Mathematics, EPFL, e-mail: direction.math@epfl.ch

Prof. Andreas Pautz

Director of the Nuclear Energy and Safety Division, PSI, e-mail: andreas.pautz@psi.ch

Additional information is available at www.psi.ch, www.epfl.ch, sb.epfl.ch, math.epfl.ch

EPFL and PSI are equal opportunity employers and family friendly institutions. They are committed to increasing the diversity of their faculty and staff. They strongly encourage women and members of ethnic minorities to apply.

ADVERTISEMENT