

Left-right reversal illusion

Kokichi Sugihara

This article presents a class of 3D optical illusions, in which the apparent orientation of an object changes to the opposite in a mirror. We first show the mathematics behind such illusions, and then present a method for designing objects with desired appearances. Next, we show two simple subclasses, which can be realized using paper, and hence can be useful even for children to create their own illusion objects.

1 Introduction

The real world and its mirror image are plane-symmetric to each other with respect to the surface of the mirror. However, an object and its mirror image do not necessarily appear plane-symmetric because human visual perception can be distorted due to optical illusions [1, 3]. One typical case is a left-right reversal illusion [9]. An example is shown in Figure 1, where an object is placed on a desk and a mirror is placed vertically behind it. The object is an arrow pointing to the right, but it points to the left in the mirror. We call this class of objects the “left-right reversing objects.” Their behaviors look impossible, and hence they belong to the class of “impossible objects” [11].

In this article, we focus on left-right reversing objects. We first show the mathematics behind them, and then present a method for designing such objects with desired appearances. Next, we exhibit two simple subclasses, which can be constructed using paper and hence can be useful even for children to create their own illusion objects.

2 Left-right reversal created by line-symmetric objects

Let B be a set of points in the 3D space, l be a straight line, and $\text{rot}(B; l)$ be the set of points obtained by rotating B around l by 180° . If $\text{rot}(B; l) = B$, B is said to be *line-symmetric* with respect to l , and l is called a *line of symmetry*.

Suppose that we fix a line-symmetric object B in space in such a way that the line of symmetry is vertical, as shown in Figure 2 (a), where the dot-dashed line represents the line of symmetry. Let v_1

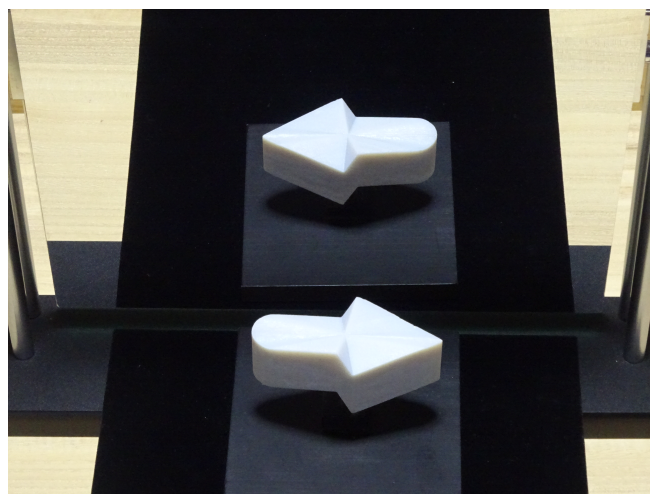


Figure 1. Arrow that changes direction when seen in a mirror.

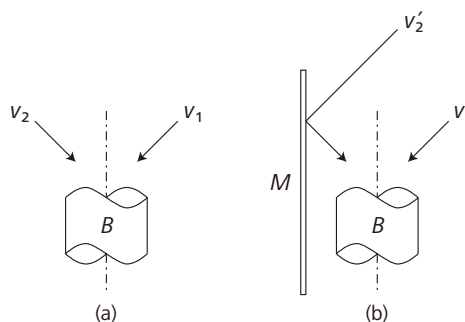


Figure 2. Line-symmetric object and two mutually opposite viewing directions.

and v_2 be two viewing directions that are parallel to a common plane containing the line of symmetry, with these views directed towards the object from opposite sides, with the same downward angle. Then B looks the same when we see it from the directions v_1 and v_2 . This is the basic nature of a line-symmetric object. As shown in Figure 2 (b), if we use a vertical mirror M and see the reflected image along the direction v'_2 instead of seeing it directly along v_2 ,

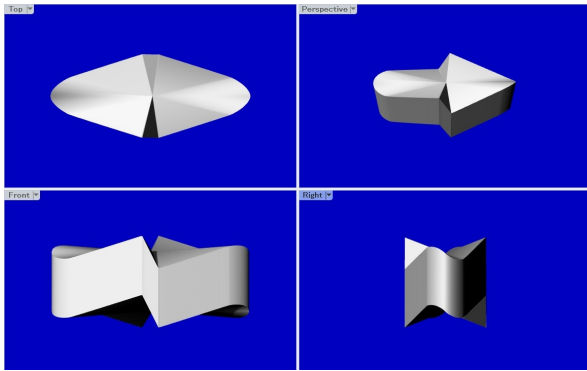


Figure 3. Computer graphics images of the object in Figure 1.

the left and right will be exchanged. Thus, if the original appearance along v_1 is a right-facing arrow, the appearance along v_2 will be a left-facing arrow.

Indeed, this optical process is seen in Figure 1. Figure 3 shows computer graphics images of the object. The left top is the plan view, from which we can see that the boundary of the object is point-symmetric with respect to the center. The line of symmetry of this object passes through the center and is perpendicular to the image plane. The left bottom image is the front view, and the right bottom image is the side view. From those images we may deduce that the object is line-symmetric with respect to a vertical line. The top right image shows the appearance along the special viewing direction, which makes the object look like a right-facing arrow.

As this example demonstrates, once we have a line-symmetric object, we can produce a left-right reversal illusion. The next question is how to create a line-symmetric object having a desired appearance.

3 How to produce a desired appearance

Let (x, y, z) be a Cartesian coordinate system in 3D space. Figure 4 shows this coordinate system in such a way that the left half shows the (x, y) -plane and the right half shows the (z, y) -plane, with the common vertical y -direction. Suppose that, as shown in the left part of Figure 4, we fix two x -monotone curves, $y = c_1(x)$ and $y = c_2(x)$, $-1 \leq x \leq 1$, on the (x, y) -plane that satisfy $c_1(-1) = c_2(-1)$, $c_1(1) = c_2(1)$, and $c_1(x) > c_2(x)$ for $-1 < x < 1$. Let S denote the closed curve composed of these two curves, and S' denote the curve obtained when we rotate S by 180° around the z -axis. In Figure 4, S' is represented by broken lines.

Our goal is to find the space curve, say T , that coincides with S when seen along the viewing direction $v_1 = (0, 1, -\tan \alpha)$ and with S' when seen along the viewing direction $v_2 = (0, -1, -\tan \alpha)$. In Figure 4, we take the right-facing arrow as the curve S , and then $c_1(x) = -c_2(x)$, $-1 \leq x \leq 1$. However, this condition is not

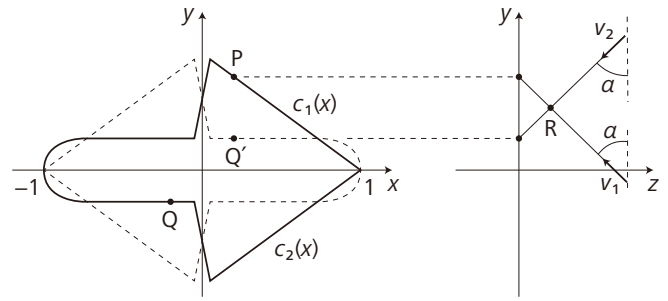


Figure 4. Construction of a left-right reversing object having a desired shape.

necessary in general; that is, the curve S is not necessarily symmetric with respect to the x -axis.

For an arbitrary x , we consider two points $P = (x, c_1(x), 0)$ and $Q = (-x, c_2(-x), 0)$. When we rotate S by 180° around the origin, Q is transformed into $Q' = (x, -c_2(-x), 0)$, and hence P and Q' are aligned along the same line parallel to the y -axis.

Let R denote the point that matches P when seen along v_1 and matches Q' when seen along v_2 . As shown on the right side of Figure 4, the point that matches P when seen along the direction v_1 is on a line passing through P and parallel to v_1 . This point is represented by

$$z_1 = -(y - c_1(x)) \tan \alpha.$$

In its turn, the point that matches Q' when seen in the direction v_2 is on the line passing through Q' and parallel to v_2 . This point is represented by

$$z_2 = (y + c_2(-x)) \tan \alpha.$$

The point R is obtained by setting $z_1 = z_2 (= z)$. This yields the formula

$$y = \frac{c_1(x) - c_2(x)}{2},$$

and substituting this expression in the formula for z_1 , we obtain

$$z = \frac{c_1(x) + c_2(-x)}{2} \tan \alpha.$$

Finally, we obtain

$$R = \left(x, \frac{c_1(x) - c_2(-x)}{2}, \frac{c_1(x) + c_2(-x)}{2} \tan \alpha \right).$$

As x moves from -1 to 1 , the point R traces a space curve that we denote by T_1 . Let T_2 be the curve that is line-symmetric to T_1 with respect to the z -axis. Then

$$T_2 = \left(-x, -\frac{c_1(x) - c_2(-x)}{2}, \frac{c_1(x) + c_2(-x)}{2} \tan \alpha \right),$$

where $-1 \leq x \leq 1$.

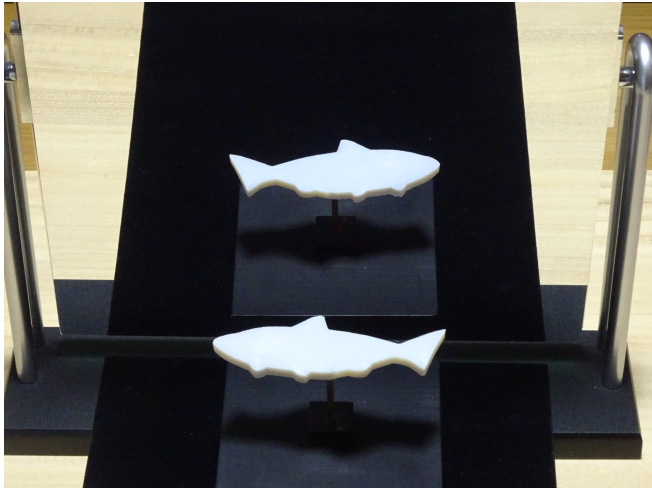


Figure 5. Left-right reversing fish.

The curves T_1 and T_2 together form a closed space curve denoted by T , which is our objective. That is, T coincides with S when seen along v_1 and coincides with S' when seen along v_2 .

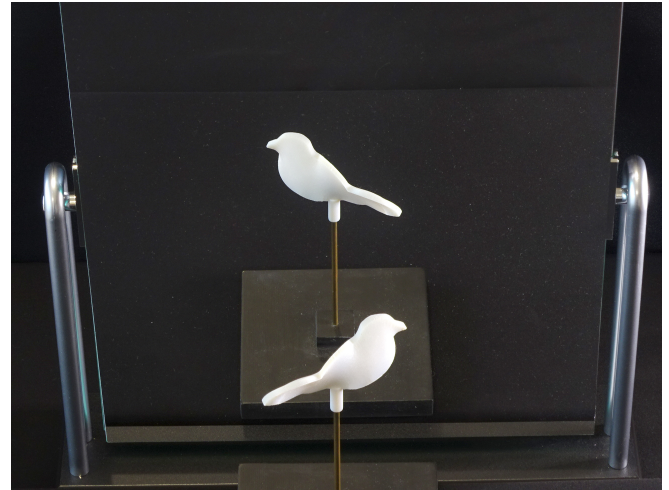
We constructed the 3D object in Figure 1 by first computing the space curve T from the boundary of an arrow shape using the above method, then translating T in the vertical direction (the direction parallel to the z -axis) and obtaining the swept cylindrical surface, and finally by wrapping the top and the bottom with continuous surfaces.

Figures 5, 6 and 7 show three more examples of left-right reversing objects computed by the method described above. The object in Figure 5 is a fish facing towards the left, which however faces towards the right in the mirror. Note that the upper and lower boundary curves of the fish shape are not symmetric with respect to the x -axis.

In Figure 6 (a), a bird faces towards the right, but its mirror image faces towards the left. In this case, we gave the initial boundary curve of the bird shape on the (x, z) -plane instead of on the (x, y) -plane, so that the resulting bird is almost vertical instead of being almost horizontal. Figure 6 (b) and (c) present the front view and the side view, respectively, of this object.

Figure 7 shows a jet airplane facing towards the left, but facing in the opposite direction in the mirror. In this case, the upper and lower boundaries are not x -monotone, but we can nevertheless construct the object. Indeed, the monotonicity condition is too strong; what we need is a one-to-one correspondence between the points on the given curve and those with the same x -coordinate on the 180° rotated curve.

In all examples, we first computed the space curve T , and then added the thickness by translating T in the direction perpendicular to the plane containing the initial curve S . Thus, the translation is vertical in Figures 5 and 7, and horizontal in Figure 6.



(a) Object and its mirror image



(b) Front view



(c) Side view

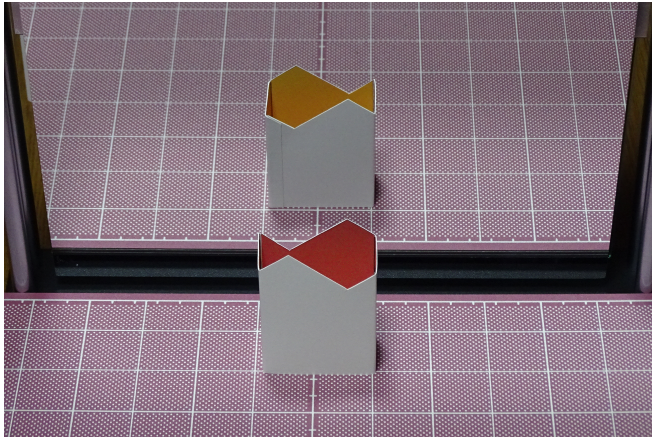
Figure 6. Left-right reversing bird.



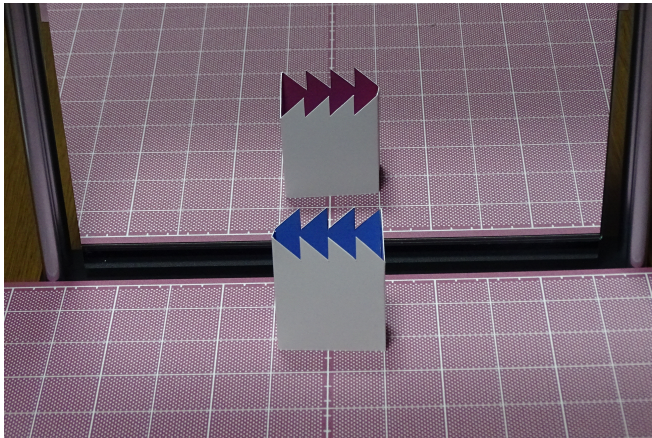
Figure 7. Left-right reversing jet airplane.

4 Human factors of the illusion

Mathematically, the left-right reversal illusion is created by a line-symmetric 3D object. However, we also must consider human factors to strengthen the illusion.



(a) Fish



(b) Cascade of arrows

Figure 10. Left-right reversal illusion made by rectangular cylinders.

The method is very simple. We need to use the same curve twice, as shown by the points labeled *c* in Figure 8. Therefore, it might be fun even for children to search for the curves that can create their own original shapes.

6 Construction by pictures

Another simple way to construct a line-symmetric object is to draw a picture. Figure 11 shows an example. The direct view of the drawing looks like a staircase going up from left to right, while in the mirror it goes up from right to left. Not only the staircase but also the upper and lower floors and walls are all left-right reversed in the mirror.

The drawing used in Figure 11 is shown in Figure 12. Note that this drawing is point-symmetric: if we rotate it by 180° around the center, we get the same picture as the initial image. This in turn means that the picture is line-symmetric with respect to the line

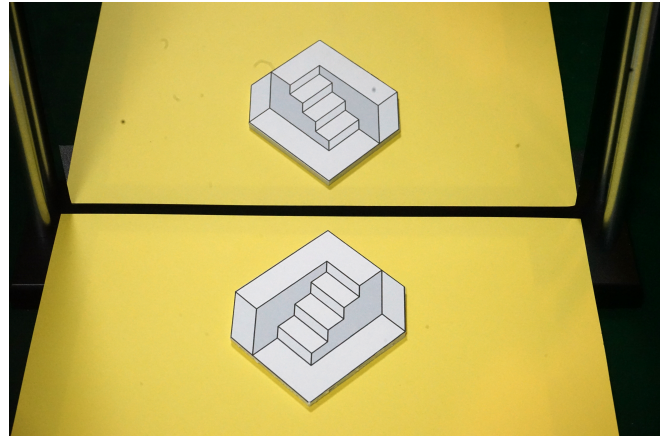


Figure 11. Left-right reversing drawing of a staircase.

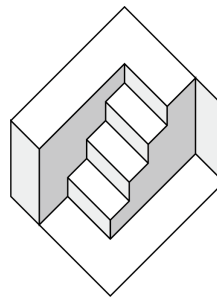


Figure 12. Drawing used in Figure 11.

that passes through the center of the drawing and is perpendicular to the picture plane. Therefore, the left and the right are reversed in the mirror because of the same reason as described above.

However, the perceptual process is a little more complicated because our brain automatically interprets 2D pictures as 3D objects when we look at the scene in Figure 11. If one does not interpret the drawing as a 3D structure, one could easily understand Figure 11, because the drawing in Figure 12 is just reflected by the mirror. In fact, the nearest point of the drawing is mapped to the farthest point in the mirror. However, the human brain has a stronger preference for rectangles than for general parallelograms [4, 5, 12]. Thus, when we look at Figure 11, our brain perceives a 3D object instead of a 2D drawing, and realizes that the mirror image is inconsistent.

Another example is shown in Figure 13. This object is also a horizontally placed drawing, and it is point-symmetric with respect to the center, and hence line-symmetric with respect to a vertical line. However, it is a perspective projection instead of the orthographic projection of a 3D object, and consequently, the impression of 3D structure is strong. Physically, the nearest part is mapped to the farthest part in the mirror. However, because we interpret the nearest part as the lowest part of the 3D structure, we try to find the corresponding counterpart around the nearest area in the mirror and fall into an inconsistent perception.

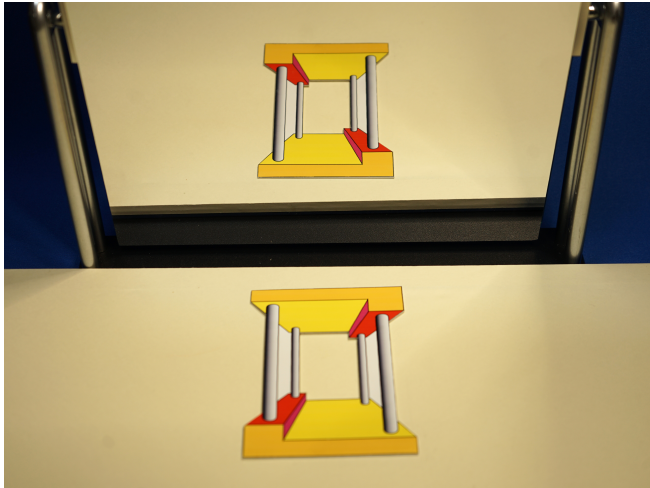


Figure 13. Another left-right reversing illusion made with a drawing.

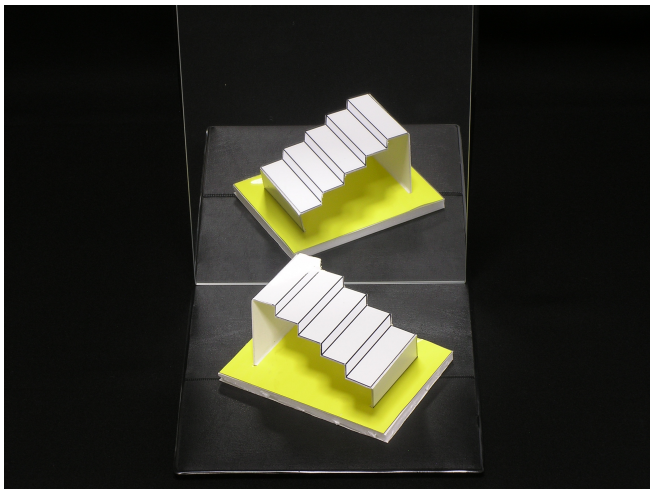


Figure 14. Mixture of a horizontal drawing (staircase) and non-horizontal structure (supporting walls).

The final example, shown in Figure 14, is a mixture of a horizontal drawing and an actual 3D structure. The staircase is a drawing fixed horizontally, with only the side walls not horizontal. The whole structure is line-symmetric with respect to a vertical line, and as a result, we can perceive the left-right reversal illusion.

7 Concluding remarks

We have demonstrated how a line-symmetric 3D structure can create a left-right reversal illusion and presented a method for designing illusion objects with desired appearances. We also presented two simple classes of line-symmetric structures: rectangular cylinders and point-symmetric 2D pictures. These simple classes

can offer material for anyone, even for children, to create their own illusion objects, and to experience the illusion.

From an educational point of view, these two simple classes of illusion objects enjoy several advantages. First, children can create their own objects instead of just being handed existing objects. This may stimulate their active involvement. Second, children can experience the illusion using real 3D objects instead of just viewing images taken by a camera. This should provide an opportunity to understand the difference between seeing objects and seeing their images, and thus help children understand the importance of having two eyes. Third, illusion objects can give children an opportunity to understand the power of mathematics, which provides a framework to create illusions in a systematic manner rather than by heuristics.

Optical illusions in general cover a wide range of visual phenomena, including misperception of size, orientation, shape, color, brightness, and motion. Among them, the depth illusion, which includes the left-right reversal illusion, is remarkable in that the mechanism can be understood from a mathematical point of view more clearly than other classes of optical illusions. Indeed, the interpretation of 2D retinal images as 3D objects is an ill-defined problem, in the sense that the answer is not unique [2, 6], and by observing the behavior of human visual perception, we can guess what kind of possibilities are chosen more frequently. This understanding also helps us create new optical illusions. The left-right reversal illusion is one of the common illusions that can be discovered using mathematics.

Acknowledgments. This work was supported by the Japan Society for the Promotion of Science, KAKENHI Grant Nos. JP21H03530 and JP21K19801.

References

- [1] R. Gregory, *The intelligent eye*. Weidenfeld & Nicolson, London (1970)
- [2] D. Marr, *Vision*. W. H. Freeman and Company, New York (1982)
- [3] J. Ninio, *The science of illusions* (English translation). Cornell University Press, Ithaca (2001)
- [4] D. N. Perkins, Visual discrimination between rectangular and nonrectangular parallelepipeds. *Perception & Psychophysics* **12**, 293–331 (1972)
- [5] D. N. Perkins, Compensating for distortion in viewing pictures obliquely. *Perception & Psychophysics* **14**, 13–18 (1973)
- [6] K. Sugihara, *Machine interpretation of line drawings*. MIT Press, Cambridge (1986)
- [7] K. Sugihara, Design of solids for antigravity motion illusion. *Comput. Geom.* **47**, 675–682 (2014)
- [8] K. Sugihara, Design of ambiguous cylinders. In *Asian Forum on Graphic Science* (Bangkok, 2015), Electric Proceedings, Fo7 (2015)

- [9] K. Sugihara, Anomalous mirror symmetry generated by optical illusion. *Symmetry* **8**, Article ID 21, DOI 10.3390/sym8040021 (2016)
- [10] K. Sugihara, Topology-disturbing objects: A new class of 3D optical illusion. *J. Math. Arts* **12**, 2–18 (2018)
- [11] K. Sugihara, Family tree of impossible objects created by optical illusion. In *Bridges 2020 Conference Proceedings*, 329–336, <http://archive.bridgesmathart.org/2020/bridges2020-329.pdf> (2020)
- [12] K. Sugihara and B. Pinna, Rectangularity is stronger than symmetry in interpreting 2D pictures as 3D objects. *Frontiers in Human Neuroscience*, DOI 10.3389/fnhum.2022.849159 (2022)

Kokichi Sugihara is a Meiji University distinguished professor emeritus. His research area is mathematical engineering. In his work on computer vision, he found a method for constructing 3D objects from “impossible figures,” and extended his research interests to human vision and optical illusions. He is acting also as an illusion artist by creating various impossible objects. He won the first prize four times in the Best Illusion of the Year Contest.

kokichis@meiji.ac.jp



Call for Proposals

RIMS Joint Research Activities 2023-2024

Application deadline : November 30, 2022, 23:59 (JST)

Types of Joint Research Activities

*RIMS Workshops(Type A)/Symposia 2023

*RIMS Workshops(Type B) 2023

More Information : RIMS Int.JU/RC Website
<https://www.kurims.kyoto-u.ac.jp/kyoten/en/>



京都大学
KYOTO UNIVERSITY



Research Institute for
Mathematical Sciences

ADVERTISEMENT