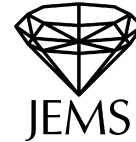


Elena Fuchs · Chen Meiri · Peter Sarnak



# Hyperbolic monodromy groups for the hypergeometric equation and Cartan involutions

*To Nicholas Katz with admiration*

Received August 11, 2013

**Abstract.** We give a criterion which ensures that a group generated by Cartan involutions in the automorph group of a rational quadratic form of signature  $(n - 1, 1)$  is “thin”, namely it is of infinite index in the latter. It is based on a graph defined on the integral Cartan root vectors, as well as Vinberg’s theory of hyperbolic reflection groups. The criterion is shown to be robust for showing that many hyperbolic hypergeometric groups for  ${}_nF_{n-1}$  are thin.

**Keywords.** Hypergeometric monodromy, hyperbolic groups, Cartan involutions

## 1. Introduction

Let  $\alpha, \beta \in \mathbb{Q}^n$  and consider the  ${}_nF_{n-1}$  hypergeometric differential equation

$$Du = 0 \tag{1.1}$$

where

$$D = (\theta + \beta_1 - 1)(\theta + \beta_2 - 1) \cdots (\theta + \beta_n - 1) - z(\theta + \alpha_1) \cdots (\theta + \alpha_n) \tag{1.2}$$

and  $\theta = z \frac{d}{dz}$ . Assuming, as we do, that  $0 \leq \alpha_j < 1$ ,  $0 \leq \beta_j < 1$ , and the  $\alpha$ ’s and  $\beta$ ’s are distinct, the  $n$ -functions

$$z^{1-\beta_i} {}_nF_{n-1}(1 + \alpha_1 - \beta_i, \dots, 1 + \alpha_n - \beta_i, 1 + \beta_1 - \beta_i, \dots, 1 + \beta_n - \beta_i | z) \tag{1.3}$$

where  $\vee$  denotes “omit  $1 + \beta_i - \beta_i$ ”, are linearly independent solutions to (1.1). Here  ${}_nF_{n-1}$  is the hypergeometric function

$${}_nF_{n-1}(\zeta_1, \dots, \zeta_n; \eta_1, \dots, \eta_{n-1} | z) = \sum_{k=0}^{\infty} \frac{(\zeta_1)_k \cdots (\zeta_n)_k z^k}{(\eta_1)_k \cdots (\eta_{n-1})_k k!}$$

and  $(\eta)_k = \eta(\eta + 1) \cdots (\eta + k - 1)$ .

E. Fuchs: Department of Mathematics, University of California, 970 Evans Hall, Berkeley, CA 94720-3840, USA; e-mail: efuchs@math.berkeley.edu

C. Meiri: Department of Mathematics, University of Chicago, 5734 S. University Avenue, Room 208 C, Chicago, IL 60637, USA; e-mail: chenmeiri@math.uchicago.edu

P. Sarnak: School of Mathematics, Institute for Advanced Study, Einstein Drive, Princeton, NJ 08540, USA; e-mail: sarnak@math.ias.edu

*Mathematics Subject Classification (2010):* Primary 20H15; Secondary 20F67

Equation (1.1) is regular away from  $\{0, 1, \infty\}$  and its monodromy group  $H(\alpha, \beta)$ <sup>1</sup> is generated by the local monodromies  $A, B, C$  ( $C = A^{-1}B$ ) gotten by analytic continuation of a basis of solutions along loops about  $0, \infty$ , and  $1$  respectively (see [B-H] for a detailed description). The local monodromies of equations that come from geometry are quasi-unipotent, which is one reason for our restricting  $\alpha$  and  $\beta$  to be rational. We restrict further to such  $H(\alpha, \beta)$ 's which after a suitable conjugation are contained in  $\mathrm{GL}_n(\mathbb{Z})$ . According to [B-H], this happens if the characteristic polynomials of  $A$  and  $B$ , whose roots are  $e^{2\pi i\alpha_j}$  and  $e^{2\pi i\beta_k}$  respectively, are products of cyclotomic polynomials. In particular for each  $n \geq 2$  there are only finitely many such choices for the pair  $\alpha, \beta$  in  $\mathbb{Q}^n$ . [B-H] also determine the Zariski closure  $G = G(\alpha, \beta)$  of  $H(\alpha, \beta)$  explicitly in terms of  $\alpha, \beta$ . Furthermore the integrality conditions that we are imposing imply that  $H(\alpha, \beta)$  is self-dual so that  $G(\alpha, \beta)$  is either finite,  $\mathrm{Sp}(n)$  ( $n$  even) or  $\mathrm{O}(n)$ . The signature of the quadratic form in the orthogonal case is determined by the relative locations of the roots  $\alpha, \beta$  (see Section 2.1).

Our interest is whether  $H(\alpha, \beta)$  is of finite or infinite index in  $G(\mathbb{Z}) = G(\alpha, \beta)[\mathbb{Z}]$ . In the first case we say that  $H(\alpha, \beta)$  is *arithmetic* and in the second case that it is *thin*. This distinction is important in various associated number-theoretic problems (see [S1]), and this paper is concerned with understanding which case happens and which is typical. In a given example, if  $H(\alpha, \beta)$  is arithmetic one can usually verify that it is so by producing generators of a finite index subgroup of  $G(\mathbb{Z})$ ; on the other hand if  $H(\alpha, \beta)$  is thin then there is no general procedure to show that it is so. Our main result is a robust certificate for showing that certain  $H(\alpha, \beta)$ 's are thin.

Until recently, other than the cases where  $H(\alpha, \beta)$  (or equivalently  $G(\alpha, \beta)$ ) is finite, there were few cases for which  $H(\alpha, \beta)$  itself was known. For  $n = 2$  it is well known that all the  $H(\alpha, \beta)$ 's are arithmetic and we show that the same is true for  $n = 3$ . For  $n = 4$  Brav and Thomas [B-T] showed very recently that the Dwork family [D]  $\alpha = (0, 0, 0, 0)$ ,  $\beta = (\frac{1}{5}, \frac{2}{5}, \frac{3}{5}, \frac{4}{5})$ , as well as six other hypergeometrics with  $G = \mathrm{Sp}(4)$  which correspond to families of Calabi–Yau three-folds, are thin. In fact they show that the generators  $A$  and  $C$  of the above  $H(\alpha, \beta)$ 's play generalized ping-pong on certain subsets of  $\mathbb{P}^3$ , from which they deduce that  $H(\alpha, \beta)$  is a free product and hence by standard cohomological arguments that  $H(\alpha, \beta)$  is thin. On the other hand, Venkataramana [V] shows that for  $n$  even and

$$\alpha = \left( \frac{1}{2} + \frac{1}{n+1}, \dots, \frac{1}{2} + \frac{n}{n+1} \right), \quad \beta = \left( 0, \frac{1}{2} + \frac{1}{n}, \dots, \frac{1}{2} + \frac{n-1}{n} \right),$$

$H(\alpha, \beta)$  is arithmetic (in  $\mathrm{Sp}(n, \mathbb{Z})$ ). In particular, there are infinitely many arithmetic  $H(\alpha, \beta)$ 's. In [S-V] many more examples with  $G = \mathrm{Sp}(n)$  and for which  $H(\alpha, \beta)$  is arithmetic are given. Another example for which  $H$  can be shown to be thin is  $\alpha = (0, 0, 0, \frac{1}{2})$ ,  $\beta = (\frac{1}{4}, \frac{1}{4}, \frac{3}{4}, \frac{3}{4})$  (see [F]). In this case  $G(\mathbb{R})$  is orthogonal and has signature  $(2, 2)$  and  $G(\mathbb{Z})$  splits as a product of  $\mathrm{SL}_2$ 's.

All of our results are concerned with the case where  $G(\alpha, \beta)$  is orthogonal and is of signature  $(n-1, 1)$  over  $\mathbb{R}$ . We call these *hyperbolic hypergeometric monodromy groups*.

<sup>1</sup> We assume throughout that  $H(\alpha, \beta)$  is primitive—see Section 2.1.

There is a unique (up to a scalar multiple) integral quadratic form  $f$  for which  $G(\mathbb{Z}) = O_f(\mathbb{Z})$ , or what is the same thing an integral quadratic lattice  $L$  with  $O(L) := G(\mathbb{Z})$ . In Section 2.4 we determine a commensurable quadratic sublattice explicitly, which facilitates many further calculations. In this hyperbolic setting  $G(\mathbb{R}) = O_f(\mathbb{R})$  acts naturally as isometries of hyperbolic  $n - 1$ -space  $\mathbb{H}^{n-1}$  and we will use this geometry as a critical ingredient to provide a certificate for  $H(\alpha, \beta)$  being thin. Our first result is the determination of the  $\alpha, \beta$ 's for which  $G(\alpha, \beta)$  is hyperbolic (see Theorem 2.6). Firstly, these only occur if  $n$  is odd and for  $n > 9$  they are completely described by seven infinite parametric families. For  $3 \leq n \leq 9$  there are sporadic examples which are listed in Tables 2 and 3 of Section 5. Our determination of the seven families is based on a reduction to [B-H]'s list of families of  $G(\alpha, \beta)$ 's which are finite (i.e. those  $G(\alpha, \beta)$ 's for which  $G = O(n)$  and which have signature  $(n, 0)$ ).

For  $n = 3$ , if  $H(\alpha, \beta)$  is not finite then it is hyperbolic, and as we noted all six of these hyperbolic groups are arithmetic. This is verified separately for each case, there being no difficulty in deciding whether a finitely generated subgroup of  $SL_2(\mathbb{R})$  is thin or not (the latter is a double cover of  $SO(2, 1)$ ) (see the Appendix)<sup>2</sup>. For  $n \geq 5$  the hyperbolic monodromies behave differently. Our certificate of thinness applies in these cases and it is quite robust as exemplified by

**Theorem 1.** *The two families of hyperbolic monodromies  $H(\alpha, \beta)$  with  $n \geq 5$  odd,*

- (i)  $\alpha = (0, \frac{1}{n+1}, \frac{2}{n+1}, \dots, \frac{n-1}{2(n+1)}, \frac{n+3}{2(n+1)}, \dots, \frac{n}{n+1}), \beta = (\frac{1}{2}, \frac{1}{n}, \frac{2}{n}, \dots, \frac{n-1}{n})$ ,
- (ii)  $\alpha = (\frac{1}{2}, \frac{1}{2n-2}, \frac{3}{2n-2}, \dots, \frac{2n-3}{2n-2}), \beta = (0, 0, 0, \frac{1}{n-2}, \frac{2}{n-2}, \dots, \frac{n-3}{n-2})$ ,

are thin.

In particular infinitely many of the  $H(\alpha, \beta)$ 's are thin and as far as we know these give the first examples in the general monodromy group setting of thin monodromy groups for which  $G$  is high dimensional and simple.

**Remark.** The normalized  ${}_nF_{n-1}$ 's corresponding to (i) and (ii) above (see [Vill] for the normalization) are

$$\sum_{k=0}^{\infty} \frac{(2k!)^2(nk)!}{((n+1)k)!(k!)^3} z^k \quad \text{and} \quad \sum_{k=0}^{\infty} \frac{((2n-2)k)!(2k)!}{(k!)^3((n-1)k)!((n-2)k)!} z^k$$

respectively. The second has integral coefficients while the first does not, hence this arithmetic feature of  $F$  is not reflected in the arithmeticity of the corresponding  $H$  (see the end of Section 2.3 for more about the integrality of the coefficients).

Our certificate for thinness applies to a number of the families and many of the sporadic examples. The full lists that we can handle thus far are recorded in Theorems 4.7

---

<sup>2</sup> For  $n \geq 5$  there is no general algorithm known to decide this.

and 4.11 of Section 4 as well as Table 2 of Section 5. There remain some families for which the method does not apply (at least not directly). In any case we are led to

**Conjecture 2.** *All but finitely many hyperbolic hypergeometric  $H(\alpha, \beta)$ 's are thin.*<sup>3</sup>

We turn to a brief description of our methods. In general if there is an epimorphism  $\psi : G(\mathbb{Z}) \rightarrow K$  with  $\psi(H(\alpha, \beta))$  of infinite index in  $K$ , then clearly  $H(\alpha, \beta)$  must be of infinite index in  $G(\mathbb{Z})$ .<sup>4</sup> In principle,  $H^1(G(\mathbb{Z}))$  could be infinite, which would imply that  $H(\alpha, \beta)$  is thin since the latter is essentially generated by involutions; however, we know very little about these cohomology groups for the full  $O_f(\mathbb{Z})$ . Instead we use variations of the quotient  $\psi : O_f(\mathbb{Z}) \rightarrow O_f(\mathbb{Z})/R_f =: K_f$  where  $R_f$  is the Vinberg reflective subgroup of  $O_f(\mathbb{Z})$ . Namely,  $R_f$  is the group generated by the elements of  $O_f(\mathbb{Z})$  which induce reflections of hyperbolic space  $\mathbb{H}^{n-1}$  (that is the induced action on one of the two-sheeted hyperboloids in  $n$ -space, see Section 3). Vinberg [Vi1] and Nikulin [N1] have shown that except for rare cases  $K$  is infinite—see Section 3 for a review of their results which we use. To apply this we need to understand the image of  $H(\alpha, \beta)$  in  $K$ . The key observation is that the element  $C$  in  $H(\alpha, \beta)$  which is a linear reflection of  $n$ -space induces a Cartan involution of  $\mathbb{H}^{n-1}$ , that is, it is an isometry of  $\mathbb{H}^{n-1}$  which is an inversion in a point  $p \in \mathbb{H}^{n-1}$ . The reflection subgroup  $H_r(\alpha, \beta)$  of  $H(\alpha, \beta)$  is the group generated by the Cartan involutions  $B^k C B^{-k}$ ,  $k \in \mathbb{Z}$ , and  $H/H_r$  is cyclic. Thus essentially up to commensurability the question of whether  $H(\alpha, \beta)$  is thin is a special case of deciding whether a subgroup  $\Delta$  of  $O_f(\mathbb{Z})$  generated by Cartan involutions is thin or not. We approach this by examining the image of such a  $\Delta$  in  $K_f$  (when the latter is infinite). At this point the study is about  $O_f(\mathbb{Z})$ ,  $K_f$ , and a general such  $\Delta$  (and  $n$  need not be odd).

We define a graph  $X_f$ , the “distance graph,” associated with root vectors of  $f$ , which is central to the analysis. We assume that  $f$  is even (that is,  $f(x) \in 2\mathbb{Z}$  for  $x \in L$ ) and for  $k = 2$  or  $-2$  let  $V_k(L) = \{v \in L \mid f(v) = k\}$  be the corresponding root vectors (in the case where  $f(x, v) \in 2\mathbb{Z}$  for all  $x, v \in \mathbb{L}$ , which comes up in some cases, we also allow  $k$  to be  $\pm 4$ ). The root vectors define linear reflections lying in  $O_f(\mathbb{Z})$  given by  $r_v : x \mapsto x - \frac{2f(x, v)}{f(v)}v$ . By our choice of the signature of  $f$ , for  $v \in V_{-2}(L)$  the map  $r_v$  induces a Cartan involution on  $\mathbb{H}^{n-1}$  while for  $v \in V_2(L)$  it induces a hyperbolic reflection on  $\mathbb{H}^{n-1}$ . Assume that the Cartan involutions generating  $\Delta$  come from root vectors in  $V_{-2}(L)$ . The graph  $X_f$  has for its vertices the set  $V_{-2}(L)$  and we join  $v$  to  $w$  if  $f(v, w) = -3$ ; this corresponds to  $v$  and  $w$  having the smallest distance allowed by discreteness, as points in  $\mathbb{H}^{n-1}$ . The graph  $X_f$  is a disjoint union of its connected components  $\Sigma_\alpha$  and these satisfy (see Section 4.1 for a detailed statement)

**Proposition 3.** (i) *The components  $\Sigma_\alpha$  consist of finitely many isomorphism types.*  
(ii) *Each type is either a singleton or an infinite homogeneous graph corresponding to a transitive isometric action of a Coxeter group with finite stabilizer.*

<sup>3</sup> It is quite possible that these  $H(\alpha, \beta)$ 's are all thin for  $n \geq 5$ .

<sup>4</sup> That useful such  $\psi$ 's exist in this hyperbolic setting is demonstrated below. If  $G(\alpha, \beta)$  is of real rank two or bigger, there are no useful  $\psi$ 's by Margulis's normal subgroup theorem [M].

- (iii) If  $\Sigma_\alpha$  is a connected component of  $X_f$ , then the group generated by the corresponding Cartan roots,  $R_{-2}(\Sigma_\alpha) = \langle r_v \mid v \in \Sigma_\alpha \rangle$ , is up to index 2 contained in the reflection group  $R_2(L) = \{r_v \mid v \in V_2(L)\}$ .

With this the certificate for showing that  $\Delta$  is thin is clear: according to Vinberg and Nikulin,  $O(L)/R_2(L)$  is infinite except in rare cases (and Nikulin has a classification of these), hence if (iii) is satisfied for the generators of  $\Delta$  then  $\Delta$  must be thin. The calculations connected with the minimal distance graph can be carried out effectively in general and even explicitly for some of our families. The process in the general case invokes an algorithm for computing the fundamental polyhedral cell for a discrete group of motions of hyperbolic space which is generated by a finite number of reflections. Such an algorithm is provided in Section 4.2.<sup>5</sup>

The above leads to the cases discussed in Sections 4 and 5 for which  $H(\alpha, \beta)$  is shown to be thin. To end we note that it is possible that a much stronger version of Vinberg's theorem in the following form is valid: For all but finitely many rational quadratic forms  $f$  (at least if  $n$  is large enough) the full "Weyl subgroup"  $W(f)$  generated by *all* reflections in  $O(L)$  (that is, both those inducing hyperbolic reflections and Cartan involutions on  $\mathbb{H}^{n-1}$ ) is of infinite index in  $O_f(L)$  (see Nikulin [N2]). If this is true then Conjecture 2 would follow easily from our discussion. In Section 3 we give an example in dimension 4 with  $R_2(L)$  being thin and  $R_{-2}(L)$  arithmetic, so there is no general commensurability between these groups. Finally, we note that when our analysis of the thinness of  $H$  succeeds, it comes with a description of  $H$  as a subgroup (up to commensurability) of a geometrically finite subgroup of  $R_2(L)$  and this opens the door to determine the group structure of  $H$  itself. We leave this for the future.

## 2. Hyperbolic hypergeometric monodromy groups: preliminaries

### 2.1. Setup of the problem

We begin by reviewing [B-H] which forms the basis of our analysis. The setup and notation is as in the Introduction. The starting point for studying  $H(\alpha, \beta)$  is the following theorem of Levelt.

**Theorem 2.1** ([Le]). *For  $1 \leq i \leq n$  let  $\alpha_i$  and  $\beta_i$  be as above. Define the complex numbers  $A_1, \dots, A_n, B_1, \dots, B_n$  to be the coefficients of the polynomials*

$$P(z) := \prod_{j=1}^n (z - e^{2\pi i \alpha_j}) = z^n + A_1 z^{n-1} + \dots + A_n,$$

$$Q(z) := \prod_{j=1}^n (z - e^{2\pi i \beta_j}) = z^n + B_1 z^{n-1} + \dots + B_n.$$

<sup>5</sup> It differs from Vinberg's algorithm [Vi1], which assumes that one has an a priori list of all the hyperbolic reflections in the group.

Then  $H(\alpha, \beta)$  is the group generated by

$$A = \begin{bmatrix} 0 & 0 & \cdots & 0 & -A_n \\ 1 & 0 & \cdots & 0 & -A_{n-1} \\ 0 & 1 & \cdots & 0 & -A_{n-2} \\ \vdots & \vdots & \ddots & \vdots & \vdots \\ 0 & 0 & \cdots & 1 & -A_1 \end{bmatrix}, \quad B = \begin{bmatrix} 0 & 0 & \cdots & 0 & -B_n \\ 1 & 0 & \cdots & 0 & -B_{n-1} \\ 0 & 1 & \cdots & 0 & -B_{n-2} \\ \vdots & \vdots & \ddots & \vdots & \vdots \\ 0 & 0 & \cdots & 1 & -B_1 \end{bmatrix}.$$

Note that  $H(\alpha, \beta)$  can be conjugated into  $GL_n(\mathbb{Z})$  if and only if the polynomials  $P(z)$  and  $Q(z)$  above factor as cyclotomic polynomials, and so the roots of  $P(z)$  and  $Q(z)$  are reciprocal, meaning they are left invariant under the map  $z \mapsto z^{-1}$ . Since we are interested in integral monodromy groups, we will assume this throughout the article. Also, given a group  $H(\alpha, \beta)$  as above, one obtains another hypergeometric group  $H(\alpha', \beta')$  by taking  $0 \leq \alpha', \beta' < 1$  to be  $\alpha + d$  and  $\beta + d$  modulo 1, respectively. The group  $H(\alpha', \beta')$  is called a *scalar shift* of  $H(\alpha, \beta)$ , and as pointed out in [B-H, Remark 5.6], we have  $H(\alpha, \beta) \cong H(\alpha', \beta')$ , up to a finite center. Thus when classifying all possible pairs  $(\alpha, \beta)$  such that  $H(\alpha, \beta)$  is integral and fixes a quadratic form of signature  $(n - 1, 1)$  in Section 2.3 we will do so up to scalar shift. Note that for any given  $n$  there are only finitely many such groups  $H(\alpha, \beta)$ .

We also assume that  $H$  is *irreducible*, meaning that it fixes no proper subspace of  $\mathbb{C}^n$ , and *primitive*, meaning that there is no direct sum decomposition  $\mathbb{C}^n = V_1 \oplus \cdots \oplus V_k$  with  $k > 1$  and  $\dim(V_i) \geq 1$  for all  $1 \leq i \leq k$  such that  $H$  simply permutes the spaces  $V_i$ . Finally, we define the reflection subgroup  $H_r$  of  $H$  to be the group generated by the reflections  $\{A^k B A^{-k} \mid k \in \mathbb{Z}\}$ . By [B-H, Theorem 5.3] the primitivity of  $H$  implies the irreducibility of  $H_r$ . With the notation above, Beukers–Heckman [B-H] show that  $H = H(\alpha, \beta)$  falls into one of three categories. Given a hypergeometric monodromy group  $H(\alpha, \beta)$ , let

$$c_{\alpha, \beta} := A_n/B_n \tag{2.1}$$

where  $A_n$  and  $B_n$  are as in Theorem 2.1. Note that in the cases we consider,  $c_{\alpha, \beta} = \pm 1$ . Then  $H(\alpha, \beta)$  belongs to one of the following categories:

- (0) A finite group (Beukers–Heckman [B-H] list such cases completely, and we summarize these cases in Theorem 2.2 below).
- (1) If  $n$  is even,  $H$  is infinite, and  $c_{\alpha, \beta} = 1$  then  $H \subset Sp_n(\mathbb{Z})$  and  $Zcl(H) = Sp_n(\mathbb{C})$ .
- (2) If  $n$  is odd and  $H$  is infinite, or if  $n$  is even,  $H$  is infinite, and  $c_{\alpha, \beta} = -1$ , then  $H \subset O_{f_{\alpha, \beta}}(\mathbb{Z})$  for some rational, unique up to scalar multiple, quadratic form  $f = f_{\alpha, \beta}$  in  $n$  variables and  $Zcl(H) = O_f(\mathbb{C})$ .

As noted in the introduction, in this article we study hypergeometric groups  $H$  which fall into category (2) and such that  $H$  fixes a quadratic form of signature  $(n - 1, 1)$ . We should mention that Beukers–Heckman show that the signature of  $f_{\alpha, \beta}$  in category (2) is given by  $(p, q)$  where  $p + q = n$  and

$$|p - q| = \left| \sum_{j=1}^n (-1)^{j+m_j} \right| \tag{2.2}$$

where  $m_j = |\{k \mid \beta_k < \alpha_j\}|$  and the  $\alpha_i$  and  $\beta_i$  are ordered as described in the introduction:  $0 \leq \alpha_j < 1, 0 \leq \beta_j < 1$ .

Although we concern ourselves with the case where  $H$  is infinite, irreducible, and primitive, we state below Beukers–Heckman’s classification of *all* possible finite groups  $H(\alpha, \beta)$ . In Section 2.3 we will need this classification to classify all of the primitive, irreducible hypergeometric groups  $H(\alpha, \beta)$  which we consider—i.e. integral orthogonal of signature  $(n - 1, 1)$ . The precise statement of the theorem is taken from [M-S].

**Theorem 2.2** ([B-H], [M-S]). *Let  $\alpha = (\alpha_1, \dots, \alpha_n) \in \mathbb{Q}^n$  and  $\beta = (\beta_1, \dots, \beta_n) \in \mathbb{Q}^n$  and let  $H(\alpha, \beta)$  be as before. Define  $a_i := e^{2\pi i \alpha_i}$  and  $b_i = e^{2\pi i \beta_i}$  and let  $\mathbf{a} := \{a_1, \dots, a_n\}$  and  $\mathbf{b} := \{b_1, \dots, b_n\}$ . Let  $P(z), Q(z)$  corresponding to  $H(\alpha, \beta)$  be as in Theorem 2.1. If  $H(\alpha, \beta)$  is finite then the corresponding polynomials  $P(z), Q(z)$  are as in one of the cases below.*

- (1) *The case where  $H_r$  is primitive: in this case the corresponding polynomials  $P(z)$  and  $Q(z)$  belong to one of two infinite families or to one of 26 sporadic examples. One such infinite family corresponds to*

$$P(z) = \frac{z^{n+1} - 1}{z - 1}, \quad Q(z) = \frac{(z^j - 1)(z^{n+1-j} - 1)}{z - 1}$$

where  $n \geq 1, 1 \leq j \leq (n + 1)/2, \gcd(j, n + 1) = 1$ . The other infinite family is obtained by replacing  $z$  with  $-z$  above.

- (2) *The case where  $H_r$  acts reducibly on  $\mathbb{C}^n$ : in this case Theorem 5.3 of [B-H] implies that  $H_r$  is primitive, and there is some primitive  $\ell$ th root of unity  $\zeta$  with  $\ell > 1$  such that  $\zeta \mathbf{a} = \mathbf{b}$ . Then  $(\alpha, \beta)$  gives the pair  $P(z^\ell), Q(z^\ell)$  where  $P$  and  $Q$  are as in case (1) or correspond to one of the sporadic examples mentioned there.*
- (3) *The case where  $H$  is imprimitive and  $H_r$  is irreducible: in this case the corresponding polynomials  $P(z)$  and  $Q(z)$  belong to one of two infinite families. One such family is*

$$P(z) = z^n + 1, \quad Q(z) = (z^j - 1)(z^{n-j} + 1)$$

where  $n \geq 3, 1 \leq j \leq n, \gcd(j, 2n) = 1$ . The other such family is obtained by replacing  $z$  with  $-z$  above.

### 2.2. Almost interlacing cyclotomic sequences

In this section we classify all almost interlacing cyclotomic sequences (see Definition 2.4 below). This classification will be used in the next section to classify all hyperbolic hypergeometric monodromies in dimension  $n > 9$ .

**Definition 2.3.** Two sequences  $0 \leq \alpha_1 < \dots < \alpha_n < 1$  and  $0 \leq \beta_1 < \dots < \beta_n < 1$  are called *interlacing cyclotomic sequences* if the following three conditions hold:

1.  $\alpha_i \neq \beta_j$  for every  $1 \leq i, j \leq n$ .
2.  $\prod_{1 \leq j \leq n} (t - e^{2\pi i \alpha_j})$  and  $\prod_{1 \leq j \leq n} (t - e^{2\pi i \beta_j})$  are products of cyclotomic polynomials.
3.  $\alpha_1 < \beta_1 < \alpha_2 < \dots < \alpha_n < \beta_n$  or  $\beta_1 < \alpha_1 < \beta_2 < \dots < \beta_n < \alpha_n$ .

Define  $r_i := |\{j \mid \beta_j < \alpha_i\}|$  and  $s_i := |\{j \mid \alpha_j < \beta_i\}|$ . Condition 3 in the above definition is equivalent to the following condition:

$$3^*. \left| \sum_{i=1}^n (-1)^{i+r_i} \right| = \left| \sum_{i=1}^n (-1)^{i+s_i} \right| = n.$$

**Definition 2.4.** Two sequences  $0 \leq \alpha_1 < \dots < \alpha_n < 1$  and  $0 \leq \beta_1 < \dots < \beta_n < 1$  are called *almost interlacing cyclotomic sequences* if the following three conditions hold:

1.  $\alpha_i \neq \beta_j$  for every  $1 \leq i, j \leq n$ .
2.  $\prod_{1 \leq j \leq n} (t - e^{2\pi i \alpha_j})$  and  $\prod_{1 \leq j \leq n} (t - e^{2\pi i \beta_j})$  are products of cyclotomic polynomials.
3.  $\left| \sum_{i=1}^n (-1)^{i+r_i} \right| = \left| \sum_{i=1}^n (-1)^{i+s_i} \right| = n - 2$ .

Note that, by the expression for the signature in (2.2), it is precisely when  $\alpha$  and  $\beta$  are almost interlacing that  $H(\alpha, \beta)$  is hyperbolic (signature  $(n - 1, 1)$ ). Beukers and Heckman [B-H] classify all interlacing cyclotomic sequences. We use their classification in order to classify all almost interlacing cyclotomic sequences. We start with the following lemma:

**Lemma 2.5.** *Let  $(\alpha_i)_{1 \leq i \leq n}$  and  $(\beta_i)_{1 \leq i \leq n}$  be almost interlacing cyclotomic sequences with  $n \geq 7$ . Then either  $n$  is odd,  $\alpha_{(n+1)/2} = 1/2$  and  $\beta_1 = 0$ , or  $n$  is even,  $\beta_{(n+1)/2} = 1/2$  and  $\alpha_1 = 0$ . Moreover, if the first possibility happens then one of the following four options holds:*

- (1)  $(c_i)_{1 \leq i \leq n}$  and  $(d_i)_{1 \leq i \leq n}$  are interlacing cyclotomic sequences where:

$$\begin{cases} c_1 = \beta_1, \\ c_i = \alpha_{i-1}, & 1 < i \leq m, \\ c_i = \alpha_i, & m < i \leq n, \\ d_i = \beta_{i+1}, & 1 \leq i < m, \\ d_m = \alpha_m, \\ d_i = \beta_i, & m < i \leq n. \end{cases}$$

- (2)  $(c_i)_{1 \leq i \leq n-1}$  and  $(d_i)_{1 \leq i \leq n-1}$  are interlacing cyclotomic sequences where:

$$\begin{cases} c_1 = \beta_1, \\ c_i = \alpha_{i-1}, & 1 < i < m, \\ c_i = \alpha_{i+1}, & m \leq i \leq n - 1, \\ d_i = \beta_{i+1}, & 1 \leq i \leq n - 1. \end{cases}$$

- (3)  $(c_i)_{1 \leq i \leq n-1}$  and  $(d_i)_{1 \leq i \leq n-1}$  are interlacing cyclotomic sequences where:

$$\begin{cases} c_i = \alpha_i, & 1 \leq i < m, \\ c_i = \alpha_{i+1}, & m \leq i \leq n - 1, \\ d_i = \beta_{i+2}, & 1 \leq i < m, \\ d_m = \alpha_m, \\ d_i = \beta_{i+1}, & m < i \leq n - 1. \end{cases}$$

- (4)  $(c_i)_{1 \leq i \leq n-2}$  and  $(d_i)_{1 \leq i \leq n-2}$  are interlacing cyclotomic sequences where:

$$\begin{cases} c_i = \alpha_i, & 1 \leq i < m, \\ c_i = \alpha_{i+2}, & m \leq i \leq n - 2, \\ d_i = \beta_{i+2}, & 1 \leq i \leq n - 2. \end{cases}$$



*Proof.* The proof is divided into easy steps:

(a) The sequences  $(\alpha_i)_{1 \leq i \leq n}$  and  $(\beta_i)_{1 \leq i \leq n}$  are cyclotomic so for every  $t \in (0, 1)$ ,

$$|\{j \mid \alpha_j = t\}| = |\{j \mid \alpha_j = 1 - t\}|, \quad |\{j \mid \beta_j = t\}| = |\{j \mid \beta_j = 1 - t\}|.$$

(b) For every  $1 \leq i \leq n - 1$  denote

$$\epsilon_i := (-1)^{|\{j \mid \beta_j \in (\alpha_i, \alpha_{i+1})\}|}, \quad \delta_i := (-1)^{|\{j \mid \alpha_j \in (\beta_i, \beta_{i+1})\}|}.$$

The equality  $|\sum_{i=1}^n (-1)^{i+r_i}| = n - 2$  implies that exactly one of the following possibilities holds:

- (i)  $\{i \mid \epsilon_i = 1\} = \{1\}$ ,
- (ii)  $\{i \mid \epsilon_i = 1\} = \{1, 2\}$ ,
- (iii)  $\{i \mid \epsilon_i = 1\} = \{n - 1\}$ ,
- (iv)  $\{i \mid \epsilon_i = 1\} = \{n - 2, n - 1\}$ ,
- (v)  $\{i \mid \epsilon_i = 1\} = \{k - 1, k\}$  for some  $3 \leq k \leq n - 2$ .

(c) The symmetry of step (a) shows that options (iii) and (iv) are not possible and that:

- If option (i) happens then  $\alpha_1 = 0$ .
- If option (ii) happens then  $\alpha_1 = \alpha_2 = 0$ .
- If option (iii) happens then  $n$  is odd,  $k = (n + 1)/2$  and  $\alpha_k = 1/2$ .

(d) Denote  $m := (n + 1)/2$ . Changing the roles of the  $\alpha_i$ 's and the  $\beta_j$ 's we see that  $n$  is odd and that either  $\alpha_m = 1/2$  and  $\beta_1 = 0$  or  $\alpha_m = 0$ , and  $\beta_1 = 1/2$ .

(e) From now on we will assume that  $\alpha_m = 1/2$  so  $\{i \mid \epsilon_i = 1\} = \{(n - 1)/2, (n + 1)/2\}$  and  $\beta_1 = 0$ .

(f) Since there are exactly  $n$   $\beta_j$ 's the assumptions of step (e) imply

$$|\{j \mid \beta_j \in (\alpha_i, \alpha_{i+1})\}| = \begin{cases} 0, & i = m - 1 \text{ or } i = m, \\ 1, & \text{otherwise.} \end{cases}$$

Furthermore, the symmetry of step (a) implies that if  $\beta_2 = 0$  then also  $\beta_3 = 0$ , while if  $\beta_2 \neq 0$  then  $\beta_n = 1 - \beta_2 > \alpha_n$ .

(g) The symmetry of step (a) implies that either  $a_{m-1} < a_m < a_{m+1}$  or  $a_{m-1} = a_m = a_{m+1}$ . Thus, there are only four options:

- (1)  $0 = \beta_1 < \beta_2 < \alpha_1 < \beta_3 < \alpha_2 < \dots < \beta_m < \alpha_{m-1}$   
 $< \alpha_m = 1/2 < \alpha_{m+1} < \beta_{m+1} < \alpha_{m+2} < \dots < \beta_{n-1} < \alpha_n < \beta_n$ ,
- (2)  $0 = \beta_1 < \beta_2 < \alpha_1 < \beta_3 < \alpha_2 < \dots < \beta_m < \alpha_{m-1}$   
 $= \alpha_m = 1/2 = \alpha_{m+1} < \beta_{m+1} < \alpha_{m+2} < \dots < \beta_{n-1} < \alpha_n < \beta_n$ ,
- (3)  $0 = \beta_1 = \beta_2 = \beta_3 < \alpha_1 < \beta_4 < \alpha_2 < \dots < \beta_{m+1} < \alpha_{m-1}$   
 $< \alpha_m = 1/2 < \alpha_{m+1} < \beta_{m+2} < \alpha_{m+2} < \dots < \beta_n < \alpha_n$ ,
- (4)  $0 = \beta_1 = \beta_2 = \beta_3 < \alpha_1 < \beta_4 < \alpha_2 < \dots < \beta_{m+1} < \alpha_{m-1}$   
 $= \alpha_m = 1/2 = \alpha_{m+1} < \beta_{m+2} < \alpha_{m+2} < \dots < \beta_n < \alpha_n$ .  $\square$

2.3. Infinite families of hyperbolic monodromy groups

In this section we combine Lemma 2.5 with the classification of finite hypergeometric monodromy groups in Theorem 2.2 to produce seven infinite families of primitive integer hypergeometric groups which fix a quadratic form of signature  $(n - 1, 1)$ . Each family is either a two- or three-parameter family. As will be clear in the proof of the following theorem, the  $n$ -dimensional two-parameter families listed below are derived from the roots of

$$P_m(z) = z^m + 1 \quad \text{and} \quad Q_m(z) = (z^j - 1)(z^{m-j} + 1), \tag{2.3}$$

where  $m$  is taken to be  $n - 2, n - 1$ , or  $n$ , while the  $n$ -dimensional three-parameter families are derived from the roots of

$$P_{m,k}(z) = \frac{z^{\ell(k+1)} - 1}{z^\ell - 1} \quad \text{and} \quad Q_{m,k}(z) = \frac{(z^{\ell j} - 1)(z^{\ell(k+1-j)} - 1)}{z^\ell - 1}, \tag{2.4}$$

where  $\ell k = m$  and  $m$  is taken to be  $n - 2, n - 1$ , or  $n$ . These families describe all primitive hypergeometric hyperbolic monodromy groups in dimension  $n > 9$  up to scalar shift. In addition to groups in these families, there are several sporadic groups in dimensions  $n \leq 9$  which are listed in Table 2 of Section 5.1 along with all primitive hyperbolic  $H(\alpha, \beta)$  in dimension  $n \leq 9$ .

**Theorem 2.6.** *Let  $n \geq 1$  be odd and let  $P_m, Q_m, P_{m,k}, Q_{m,k}$  be as defined in (2.3) and (2.4). Let  $\alpha = \{\alpha_1, \dots, \alpha_n\}$  and  $\beta = \{\beta_1, \dots, \beta_n\}$  where  $\alpha_i, \beta_i \in \mathbb{Q}$  for  $1 \leq i \leq n$  and let  $H(\alpha, \beta)$  be as in Theorem 2.1. If  $(\alpha, \beta)$  belongs to one of the following families or is a scalar shift of a pair in one of these families, then  $H(\alpha, \beta) \subset O(n - 1, 1)$ . If  $n > 9$ , this list of families completely describes (up to scalar shift) the groups  $H(\alpha, \beta) \subset O_f(\mathbb{Z})$  where  $f$  is a quadratic form in  $n$  variables of signature  $(n - 1, 1)$ .*

1)  $\mathcal{M}_1(j, n)$ :

$$\alpha = \left(0, \frac{1}{2n}, \frac{3}{2n}, \dots, \frac{n-1}{2n}, \frac{n+1}{2n}, \dots, \frac{2n-3}{2n}, \frac{2n-1}{2n}\right),$$

$$\beta = \left(\frac{1}{j}, \dots, \frac{j-1}{j}, \frac{1}{2}, \frac{1}{2n-2j}, \frac{3}{2n-2j}, \dots, \frac{2n-2j-3}{2n-2j}, \frac{2n-2j-1}{2n-2j}\right),$$

where  $0 < j < n$  is an odd integer.

2)  $\mathcal{M}_2(j, n)$ :

$$\alpha = \left(\frac{1}{2n-2}, \frac{3}{2n-2}, \dots, \frac{1}{2}, \dots, \frac{2n-5}{2n-2}, \frac{2n-3}{2n-2}\right),$$

$$\beta = \left(0, 0, 0, \frac{1}{j}, \dots, \frac{j-1}{j}, \frac{1}{2n-2j-2}, \frac{3}{2n-2j-2}, \dots, \frac{n-j-3}{2n-2j-2}, \frac{n-j+1}{2n-2j-2}, \dots, \frac{2n-2j-5}{2n-2j-2}, \frac{2n-2j-3}{2n-2j-2}\right),$$

where  $0 < j < n$  is an integer and  $j/(n, j)$  is odd.

3)  $\mathcal{M}_3(j, n)$ :

$$\alpha = \left(\frac{1}{2n-4}, \frac{3}{2n-4}, \dots, \frac{1}{2}, \frac{1}{2}, \frac{1}{2}, \dots, \frac{2n-7}{2n-4}, \frac{2n-5}{2n-4}\right),$$

$$\beta = \left(0, 0, 0, \frac{1}{j}, \dots, \frac{j-1}{j}, \frac{1}{2n-2j-4}, \frac{3}{2n-2j-4}, \dots, \frac{2n-2j-7}{2n-2j-4}, \frac{2n-2j-5}{2n-2j-4}\right),$$

where  $0 < j \leq n - 2$  is an odd integer.

4)  $\mathcal{N}_1(j, k, n)$ :

$$\alpha = (b_0, a_1, \dots, a_{n-1}), \quad \beta = (a_0, b_1, \dots, b_{n-1}),$$

where  $(j, k + 1) = 1$ ,  $a_0 = 1/2$ ,  $b_0 = 0$ ,  $e^{2\pi ia_0}, \dots, e^{2\pi ia_{n-1}}$  are the roots of  $P_{n,k}(z)$ , and  $e^{2\pi ib_0}, \dots, e^{2\pi ib_{n-1}}$  are the roots of  $Q_{n,k}(z)$ .

5)  $\mathcal{N}_2(j, k, n)$ :

$$\alpha = (0, a_0, \dots, a_{n-2}), \quad \beta = (\frac{1}{2}, \frac{1}{2}, \frac{1}{2}, b_2, \dots, b_{n-2}),$$

where  $(j, k + 1) = 1$ ,  $b_0 = 0$ ,  $b_1 = 1/2$ ,  $e^{2\pi ia_0}, \dots, e^{2\pi ia_{n-2}}$  are the roots of  $P_{n-1,k}(z)$ , and  $e^{2\pi ib_0}, \dots, e^{2\pi ib_{n-2}}$  are the roots of  $Q_{n-1,k}(z)$ .

6)  $\mathcal{N}_3(j, k, n)$ :

$$\alpha = (\frac{1}{2}, a_0, \dots, a_{n-2}), \quad \beta = (0, 0, 0, b_2, \dots, b_{n-2}),$$

where  $(j, k + 1) = 1$ ,  $b_0 = 0$ ,  $b_1 = 1/2$ ,  $e^{2\pi ia_0}, \dots, e^{2\pi ia_{n-2}}$  are the roots of  $P_{n-1,k}(z)$ , and  $e^{2\pi ib_0}, \dots, e^{2\pi ib_{n-2}}$  are the roots of  $Q_{n-1,k}(z)$ .

7)  $\mathcal{N}_4(j, k, n)$ :

$$\alpha = (\frac{1}{2}, \frac{1}{2}, a_0, \dots, a_{n-3}), \quad \beta = (0, 0, b_0, b_1, \dots, b_{n-3}),$$

where  $(j, k + 1) = 1$ ,  $0 < j < (n - 3)/2$ ,  $e^{2\pi ia_0}, \dots, e^{2\pi ia_{n-3}}$  are the roots of  $P_{n-2,k}(z)$  and  $e^{2\pi ib_0}, \dots, e^{2\pi ib_{n-3}}$  are the roots of  $Q_{n-2,k}(z)$ .

*Proof.* From the previous section, we know that every family of pairs  $(\alpha, \beta)$  for which  $H(\alpha, \beta) \subset O(n - 1, 1)$  can be derived from a family of pairs  $(\alpha', \beta')$  for which  $H(\alpha', \beta')$  is finite, but not necessarily primitive or irreducible. There are several cases to consider.

**Case 1:**  $|\alpha'| = |\beta'| = n$ . Without loss of generality, assume  $\alpha'_k = 1/2$  for some  $k$  and  $\beta'_1 = 0$ . By Lemma 2.5, letting

$$\alpha_j = \alpha'_j \text{ for } j \neq k, \quad \alpha_k = 0, \quad \beta_j = \beta'_j \text{ for } j \neq 1, \quad \beta_1 = 1/2$$

we see that  $H(\alpha, \beta) \subset O(n - 1, 1)$ .

Suppose  $H(\alpha', \beta')$  is finite, imprimitive, and irreducible. From Theorem 2.2 there are two infinite families of  $(\alpha', \beta')$ , the second of which gives pairs that are scalar shifts by  $1/2$  of the pairs coming from the first family. Since we are only interested in determining pairs up to scalar shift, we consider just one of these families, which has corresponding cyclotomic polynomials  $P_n(z)$  and  $Q_n(z)$  from (2.3) where  $j$  is odd. Up to scalar shift, this yields the family  $\mathcal{M}_1$ :

$$\alpha = (0, \frac{1}{2n}, \frac{3}{2n}, \dots, \frac{n-1}{2n}, \frac{n+1}{2n}, \dots, \frac{2n-3}{2n}, \frac{2n-1}{2n}),$$

$$\beta = (\frac{1}{j}, \dots, \frac{j-1}{j}, \frac{1}{2}, \frac{1}{2n-2j}, \frac{3}{2n-2j}, \dots, \frac{2n-2j-3}{2n-2j}, \frac{2n-2j-1}{2n-2j}),$$

where  $j$  is odd. Note that, unlike  $(\alpha', \beta')$ , the pair  $(\alpha, \beta)$  is no longer imprimitive, and still irreducible.

Suppose  $H(\alpha', \beta')$  is finite and reducible or primitive and irreducible. Then for every  $\ell \mid n$ , Theorem 2.2 gives two infinite families of  $(\alpha', \beta')$ , of which we consider just the first, as the other can be obtained via scalar shift of the first. The corresponding cyclotomic polynomials in this case are  $P_{n,k}(z)$  and  $Q_{n,k}(z)$  from (2.4), where  $j, k, \ell \in \mathbb{N}$  with  $(j, k + 1) = 1$  and  $\ell k = n$ . Let  $a_0 = 1/2$  and denote the roots of  $P_{n,k}(z)$  by  $e^{2\pi i a_0}, \dots, e^{2\pi i a_{n-1}}$ . Let  $b_0 = 0$  and denote the roots of  $Q_{n,k}(z)$  by  $e^{2\pi i b_0}, \dots, e^{2\pi i b_{n-1}}$ . Up to scalar shift, this yields the family  $\mathcal{N}_1$ :

$$\alpha = (b_0, a_1, \dots, a_{n-1}), \quad \beta = (a_0, b_1, \dots, b_{n-1}), \tag{2.5}$$

Note that the pair  $(\alpha, \beta)$  is primitive and irreducible.

**Case 2:**  $|\alpha'| = |\beta'| = n - 1$ . As before, we consider the imprimitive irreducible, and the primitive irreducible or reducible cases.

Suppose  $H(\alpha', \beta')$  is finite, imprimitive, and irreducible. From Theorem 2.2, we deduce that up to scalar shift the only family of  $(\alpha', \beta')$  in this case corresponds to the roots of  $P_{n-1}(z)$  and  $Q_{n-1}(z)$  in (2.3):

$$\begin{aligned} \alpha' &= \left( \frac{1}{2n-2}, \frac{3}{2n-2}, \dots, \frac{2n-5}{2n-2}, \frac{2n-3}{2n-2} \right), \\ \beta' &= \left( 0, \frac{1}{j}, \dots, \frac{j-1}{j}, \frac{1}{2n-2j-2}, \frac{3}{2n-2j-2}, \dots, \frac{2n-2j-5}{2n-2j-2}, \frac{2n-2j-3}{2n-2j-2} \right), \end{aligned}$$

where  $j/(n, j)$  is odd. According to Lemma 2.5, there are two ways to obtain from  $(\alpha', \beta')$  a pair  $(\alpha, \beta)$  for which  $H(\alpha, \beta)$  is signature  $(n - 1, 1)$ , giving the two families

$$\begin{aligned} \alpha &= \left( \frac{1}{2n-2}, \frac{3}{2n-2}, \dots, \frac{1}{2}, \dots, \frac{2n-5}{2n-2}, \frac{2n-3}{2n-2} \right), \\ \beta &= \left( 0, 0, 0, \frac{1}{j}, \dots, \frac{j-1}{j}, \frac{1}{2n-2j-2}, \frac{3}{2n-2j-2}, \dots, \frac{n-j-3}{2n-2j-2}, \frac{n-j+1}{2n-2j-2}, \dots, \right. \\ &\quad \left. \frac{2n-2j-5}{2n-2j-2}, \frac{2n-2j-3}{2n-2j-2} \right), \end{aligned}$$

where  $(j, 2n) = 1$  and

$$\begin{aligned} \alpha &= \left( 0, \frac{1}{2n-2}, \frac{3}{2n-2}, \dots, \frac{2n-5}{2n-2}, \frac{2n-3}{2n-2} \right), \\ \beta &= \left( \frac{1}{2}, \frac{1}{2}, \frac{1}{2}, \frac{1}{j}, \dots, \frac{j-1}{j}, \frac{1}{2n-2j-2}, \frac{3}{2n-2j-2}, \dots, \frac{n-j-3}{2n-2j-2}, \frac{n-j+1}{2n-2j-2}, \dots, \right. \\ &\quad \left. \frac{2n-2j-5}{2n-2j-2}, \frac{2n-2j-3}{2n-2j-2} \right) \end{aligned}$$

where  $j/(n, j)$  is odd. However, since these two families are shifts of each other by  $1/2$ , we record them under one family  $\mathcal{M}_2$ .

Suppose  $H(\alpha', \beta')$  is finite and reducible or primitive irreducible. From Theorem 2.2, we see that for every  $\ell \mid n - 1$  there is only one family up to scalar shift of  $(\alpha', \beta')$  for which  $H(\alpha', \beta')$  is reducible. Namely, let  $j, k, \ell \in \mathbb{N}$  with  $(j, k + 1) = 1$  and  $\ell k = n - 1$ . Denote the roots of  $P_{n-1,k}(z)$  in (2.4) by  $e^{2\pi i a_0}, \dots, e^{2\pi i a_{n-2}}$ . Let  $b_0 = 0, b_1 = 1/2$ , and denote the roots of  $Q_{n-1,k}(z)$  in (2.4) by  $e^{2\pi i b_0}, \dots, e^{2\pi i b_{n-2}}$ . Then the family

$$\alpha' = (a_0, \dots, a_{n-2}), \quad \beta' = (b_0, \dots, b_{n-2})$$

is the only family up to scalar shift in this case such that  $H(\alpha', \beta')$  is reducible. According to Lemma 2.5, there are two ways to obtain a pair  $(\alpha, \beta)$  for which  $H(\alpha, \beta)$  is signature  $(n - 1, 1)$ . One way is to remove the term  $b_0 = 0$  and add two  $1/2$ 's to  $\beta'$ , and add the term 0 to  $\alpha'$ , yielding the family  $\mathcal{N}_2$ :

$$\alpha = (0, a_0, \dots, a_{n-2}), \quad \beta = \left(\frac{1}{2}, \frac{1}{2}, b_1, \dots, b_{n-2}\right). \tag{2.6}$$

Another way is to add the term  $1/2$  to  $\alpha'$ , take away the term  $b_1 = 1/2$  from  $\beta'$ , and insert two 0's into  $\beta'$ , yielding the family  $\mathcal{N}_3$ :

$$\alpha = \left(\frac{1}{2}, a_0, \dots, a_{n-2}\right), \quad \beta = (0, 0, 0, b_2, \dots, b_{n-2}). \tag{2.7}$$

**Case 3:**  $|\alpha'| = |\beta'| = n - 2$ . Suppose  $H(\alpha', \beta')$  is finite, imprimitive, and irreducible. From Theorem 2.2, we infer that up to scalar shift the only family of  $(\alpha', \beta')$  in this case is obtained from the roots of the cyclotomic polynomials  $P_{n-2}(z)$  and  $Q_{n-2}(z)$  in (2.3):

$$\alpha' = \left(\frac{1}{2n-4}, \frac{3}{2n-4}, \dots, \frac{2n-7}{2n-4}, \frac{2n-5}{2n-4}\right),$$

$$\beta' = \left(0, \frac{1}{j}, \dots, \frac{j-1}{j}, \frac{1}{2n-2j-4}, \frac{3}{2n-2j-4}, \dots, \frac{2n-2j-7}{2n-2j-4}, \frac{2n-2j-5}{2n-2j-4}\right),$$

where  $j$  is odd. The corresponding  $(\alpha, \beta)$  for which  $H(\alpha, \beta)$  is signature  $(n - 1, 1)$  is obtained by adding two  $1/2$ 's to  $\alpha'$ , and adding two 0's to  $\beta'$ , yielding the family  $\mathcal{M}_3$ :

$$\alpha = \left(\frac{1}{2n-4}, \frac{3}{2n-4}, \dots, \frac{1}{2}, \frac{1}{2}, \frac{1}{2}, \dots, \frac{2n-5}{2n-2}, \frac{2n-3}{2n-2}\right),$$

$$\beta = \left(0, 0, 0, \frac{1}{j}, \dots, \frac{j-1}{j}, \frac{1}{2n-2j-4}, \frac{3}{2n-2j-4}, \dots, \frac{2n-2j-7}{2n-2j-4}, \frac{2n-2j-5}{2n-2j-4}\right),$$

where  $j$  is odd.

Suppose  $H(\alpha', \beta')$  is finite and reducible or primitive irreducible. From Theorem 2.2, we find that for every  $\ell \mid n - 2$  that there is only one family up to scalar shift of  $(\alpha', \beta')$  for which  $H(\alpha', \beta')$  is reducible. Namely, let  $j, k, \ell \in \mathbb{N}$  with  $(j, k + 1) = 1$  and  $\ell k = n - 2$ . Denote the roots of  $P_{n-2,k}(z)$  in (2.4) by  $e^{2\pi i a_0}, \dots, e^{2\pi i a_{n-3}}$ . Denote the roots of  $Q_{n-2,k}(z)$  in (2.4) by  $e^{2\pi i b_0}, \dots, e^{2\pi i b_{n-3}}$ . Then the family

$$\alpha' = (a_0, \dots, a_{n-3}), \quad \beta' = (b_0, \dots, b_{n-3})$$

is the only family up to scalar shift in this case such that  $H(\alpha', \beta')$  is reducible.

The corresponding  $(\alpha, \beta)$  for which  $H(\alpha, \beta)$  is signature  $(n - 1, 1)$  is obtained by adding two  $1/2$ 's to  $\alpha'$ , and adding two 0's to  $\beta'$ , yielding the family  $\mathcal{N}_4$ :

$$\alpha = \left(\frac{1}{2}, \frac{1}{2}, a_0, \dots, a_{n-3}\right), \quad \beta = (0, 0, b_0, b_1, \dots, b_{n-3}). \tag{2.8}$$

This exhausts all of the possibilities and thus we have the statement in the theorem as desired. Since from the previous section we know that any primitive hypergeometric hyperbolic monodromy group is obtained by permuting the coordinates of some interlacing pair  $(\alpha', \beta')$ , and since there are no sporadic such interlacing pairs in dimensions  $n > 7$ , we conclude that the families  $\mathcal{M}_1, \mathcal{M}_2, \mathcal{M}_3, \mathcal{N}_1, \mathcal{N}_2, \mathcal{N}_3$ , and  $\mathcal{N}_4$  completely describe the primitive hyperbolic hypergeometric  $H(\alpha, \beta)$ 's in dimension  $n > 9$ . □

**Remark 2.7.** We end this subsection with a remark about the integrality of the coefficients of  ${}_nF_{n-1}$  for hyperbolic hypergeometrics. Writing  $R(t) = P(t)/Q(t)$ , where  $P$  and  $Q$  are as in Theorem 2.1, as

$$\frac{(t^{a_1} - 1) \cdots (t^{a_K} - 1)}{(t^{b_1} - 1) \cdots (t^{b_L} - 1)}$$

with  $a_j, b_k$  positive integers and  $a_j \neq b_k$ , the coefficients of the corresponding hypergeometric function are

$$u_m = \frac{(ma_1)! \cdots (ma_K)!}{(mb_1)! \cdots (mb_L)!} \tag{*}$$

If these are to be integers then  $d := L - K$  must be at least 1. Note that  $d$  is the multiplicity of the  $k$ 's for which  $\beta_k = 0$ . Then

$$\sum_{m=0}^{\infty} u_m z^m = {}_nF_{n-1}(\alpha_1, \dots, \alpha_n; \beta_1, \dots, \beta_{n-1} \mid Cz)$$

where  $C = \frac{a_1^{a_1} a_2^{a_2} \cdots a_K^{a_K}}{b_1^{b_1} b_2^{b_2} \cdots b_L^{b_L}}$  (see [Vill], [B]).

It is easy to check using Landau's criterion [L] and our characterization of hyperbolic hypergeometric monodromies that  $u_m \in \mathbb{Z}$  iff  $d = 3$ . From the description of the families of hyperbolic hypergeometric monodromies in Theorem 2.6 we see that  $\mathcal{M}_2(j, n)$ ,  $\mathcal{M}_3(j, n)$ ,  $\mathcal{N}_3(j, k, n)$ , and  $\mathcal{N}_4(j, k, n)$  are the infinite families with integral coefficients while the sporadic ones can be read off from Tables 2 and 3, namely the entries with  $\beta_1 = \beta_2 = \beta_3 = 0$ . This can be used to give the list of integral factorials (\*) which correspond to hyperbolic hypergeometric monodromies. This is the analogue of [Vill] and [B] which classify the integral  $u_m$ 's in (\*) which correspond to finite monodromy groups (which in turn correspond to  $d = 1$ ).

2.4. The quadratic form

In this section we calculate the quadratic forms preserved by the primitive hyperbolic hypergeometric monodromy groups described in the previous section. This will be a necessary ingredient in our minimal distance graph method described in Section 4. Recall that the monodromy group  $H = H(\alpha, \beta)$  is generated by two matrices

$$A := \begin{bmatrix} 0 & 0 & \cdots & 0 & -1 \\ 1 & 0 & \cdots & 0 & -a_{n-1} \\ 0 & 1 & \cdots & 0 & -a_{n-2} \\ \vdots & \vdots & \ddots & \vdots & \vdots \\ 0 & 0 & \cdots & 1 & -a_1 \end{bmatrix}, \quad B := \begin{bmatrix} 0 & 0 & \cdots & 0 & 1 \\ 1 & 0 & \cdots & 0 & -b_{n-1} \\ 0 & 1 & \cdots & 0 & -b_{n-2} \\ \vdots & \vdots & \ddots & \vdots & \vdots \\ 0 & 0 & \cdots & 1 & -b_1 \end{bmatrix},$$

where the characteristic polynomials of  $A$  and  $B$ ,  $P(x) := x^n + a_1 x^{n-1} + \cdots + a_{n-1} x + 1$  and  $Q(x) := x^n + b_1 x^{n-1} + \cdots + b_{n-1} x - 1$  respectively, are products of cyclotomic

polynomials. Denote

$$C := A^{-1}B = \begin{bmatrix} 1 & 0 & \cdots & 0 & -(a_{n-1} + b_{n-1}) \\ 0 & 1 & \cdots & 0 & -(a_{n-2} + b_{n-2}) \\ \vdots & \vdots & \ddots & \vdots & \vdots \\ 0 & 0 & \cdots & 1 & -(a_1 + b_1) \\ 0 & 0 & \cdots & 0 & -1 \end{bmatrix}, \quad v := \begin{bmatrix} a_{n-1} + b_{n-1} \\ a_{n-2} + b_{n-2} \\ \vdots \\ a_1 + b_1 \\ 2 \end{bmatrix}. \quad (2.9)$$

The eigenvalues of  $C$  are 1 and  $-1$  and their geometric multiplicities are  $n - 1$  and 1 respectively. The first  $n - 1$  elements  $e_1, \dots, e_{n-1}$  of the standard basis are eigenvectors for the eigenvalue 1, while  $v$  is an eigenvector for the eigenvalue  $-1$ .

**Lemma 2.8.** *Let  $f \in M_{n \times n}(\mathbb{Z})$ . Then  $A^t f A = f$  if and only if  $\tilde{A}^{i-1} f e_1 = f e_i$  for every  $2 \leq i \leq n$  where  $\tilde{A} = (A^t)^{-1}$ .*

*Proof.* The “only if” part follows from comparing the first  $n - 1$  columns of both sides of  $\tilde{A} f = f A$ . For the “if” part it suffices to check that also the last columns of  $\tilde{A} f$  and  $f A$  are equal. The equalities of the first  $n - 1$  columns imply that  $\tilde{A}^i f e_1 = f A^i e_1$  for every  $1 \leq i \leq n - 1$ . The characteristic polynomial  $P(x)$  of  $A$  is also the characteristic polynomial of  $\tilde{A}$  since it is a product of cyclotomic polynomials. Thus,

$$\begin{aligned} f A e_n &= f A^n e_1 = -f(a_1 A^{n-1} + \cdots + a_{n-1} A + A) e_1 \\ &= -(a_1 \tilde{A}^{n-1} + \cdots + a_{n-1} \tilde{A} + \tilde{A}) f e_1 = \tilde{A}^n f e_1 = \tilde{A} f A^{n-1} e_1 = \tilde{A} f e_n. \quad \square \end{aligned}$$

**Lemma 2.9.** *Assume that  $f \in M_{n \times n}(\mathbb{Z})$  satisfies  $A^t f A = f$ . Then  $B^t f B = f$  if and only if  $f e_1$  is Euclidean-orthogonal to  $B^{2-i} v$  for every  $2 \leq i \leq n$ . In particular, if  $A^t f A = f$  and  $B^t f B = f$  then  $f e_i$  is Euclidean-orthogonal to  $v$  for every  $1 \leq i \leq n - 1$ .*

*Proof.* Lemma 2.8 and its analog with respect to  $B$  implies that  $B^t f B = f$  if and only if  $\tilde{A}^{i-1} f e_1 = \tilde{B}^{i-1} f e_1$  for every  $2 \leq i \leq n$ . As the first row of  $\tilde{A} - \tilde{B}$  is  $-v^t$  while the other rows are zeros,  $f e_1$  must be orthogonal to  $v$  (under the usual Euclidean scalar product). For every  $i \geq 3$ ,

$$\tilde{A}^{i-1} - \tilde{B}^{i-1} = \tilde{A}(\tilde{A}^{i-2} - \tilde{B}^{i-2}) - (\tilde{B} - \tilde{A})\tilde{B}^{i-2},$$

so by induction on  $i$  we see that  $f$  satisfies the required condition if and only if we have  $(\tilde{B} - \tilde{A})\tilde{B}^{i-2} f = 0$ , which is equivalent to  $f$  being Euclidean-orthogonal to  $B^{2-i} v$  for every  $3 \leq i \leq n$ . Finally, if  $A^t f A = f$ ,  $B^t f B = f$  then also  $C^t f C = C$ . Thus, for  $1 \leq i \leq n - 1$  we have  $v^t f e_i = (Cv)^t f C e_i = -v^t f e_i$  so  $v^t f e_i = 0$ .  $\square$

**Proposition 2.10.** *Let  $A, B, C, P(X), Q(X)$  and  $v$  be as above. Assume that the group  $H := \langle A, B \rangle$  is primitive. Then:*

- (1) *The vectors  $v, Bv, \dots, B^{n-1}v$  are linearly independent and  $H = \langle A, B \rangle$  preserves the lattice  $L$  spanned by them.*
- (2) *There exists a unique (up to a scalar multiple) non-zero integral quadratic form  $(\cdot, \cdot)$  such that  $A$  and  $B$  belong to its orthogonal group.*

- (3) If the quadratic form is normalized to have  $(v, v) = -2$  then  $(v, u)$  equals minus the  $n$ th coordinate of  $u$  for every  $u \in \mathbb{Z}^n$ .
- (4) If the coefficients of  $Q(x)$  satisfy  $B_i = (-1)^i$  then the matrix representing  $f$  with respect  $v, Bv, \dots, B^{n-1}v$  is given by

$$f_{i,j} := \begin{cases} -2 & \text{if } |i - j| = 0, \\ -1 - a_1 & \text{if } |i - j| = 1, \\ -a_k - a_{k-1} & \text{if } |i - j| = k \notin \{0, 1\}. \end{cases}$$

*Proof.* We start by proving the existence part of (2). By Lemma 2.9 there exists a non-zero  $f \in M_{n \times n}(\mathbb{Z})$  such that  $A^t f A = A$  and  $B^t f B = f$ . Assume first that  $f$  is anti-symmetric so  $v^t f v = 0$ . Lemma 2.9 implies that  $v^t f e_i = 0$  for every  $1 \leq i \leq n-1$ . Since  $v, e_1, \dots, e_{n-1}$  span  $\mathbb{Q}^n$ , the set  $\{w \in \mathbb{Q}^n \mid w^t f u = 0 \text{ for all } u \in \mathbb{Q}^n\}$  is a non-trivial proper subspace of  $\mathbb{Q}^n$ . This subspace is preserved by  $H$ , contrary to the irreducibility of  $H$ . Thus,  $f$  is not anti-symmetric and the quadratic form  $(u_1, u_2) := u_1^t (f + f^t) u_2$  has the desired properties. Lemma 2.9 implies that  $v^t (f + f^t) = (0 \ \dots \ 0 \ c)$  for some  $c \neq 0$  so (3) holds.

Since  $H$  is primitive, every non-trivial normal subgroup of it is irreducible. Thus in order to prove (1) it is enough to show that the normal subgroup  $H_r := \langle B^{-i} C B^i \mid i \in \mathbb{Z} \rangle$  preserves the  $\mathbb{Z}$ -lattice spanned by  $v, Bv, \dots, B^{n-1}v$ . Property (3) implies that  $Cu = u - 2 \frac{(v,u)}{(v,v)} v$  for every  $u \in \mathbb{Z}^n$ . Since  $B$  preserves the quadratic form,  $B^{-i} C B^i u = u - 2 \frac{(B^{-i}v,u)}{(B^{-i}v,B^{-i}v)} B^{-i}v$  for every  $u \in \mathbb{Z}^n$ . Thus,  $H_r$  preserves the  $\mathbb{Z}$ -lattice spanned by  $v, Bv, \dots, B^{n-1}v$  and the proof of (1) is complete. The uniqueness part of (2) now follows from (1) together with Lemma 2.9.

For  $1 \leq i \leq n-1$  the  $(n-i)$ th and the  $(n-i+1)$ th coordinates of the bottom row of  $B^i$  are equal to 1 and all the other coordinates of this row are zero. Thus, the last coordinate of  $B^i v$  is  $a_1 + 1$  if  $i = 1$  and  $a_i + a_{i-1}$  if  $2 \leq i \leq n-1$ . From (3) we get  $(v, B^i v) = f_{1,i}$  for every  $1 \leq i \leq n$ . Property (4) follows from the fact that  $f_{i,j}$  depends only on  $|i - j|$  since  $B$  preserves the quadratic form.  $\square$

We now record the invariant quadratic form for two cases that we consider in Section 4.2.

**Corollary 2.11.** *Let  $(\cdot, \cdot)$  be the normalized quadratic form preserved by  $\mathcal{N}_1(1, n, n)$ . If  $1 \leq i, j \leq n$  then*

$$(B^i v, B^j v) = \begin{cases} -2 & \text{if } |i - j| = 0, \\ -3 & \text{if } |i - j| = 1, \\ -4 & \text{if } |i - j| \geq 2. \end{cases}$$

**Corollary 2.12.** *Let  $(\cdot, \cdot)$  be the normalized quadratic form preserved by  $\mathcal{N}_1(3, n, n)$ . If  $1 \leq i, j \leq n$  then*

$$(B^i v, B^j v) = \begin{cases} -2 & \text{if } |i - j| = 0, \\ -4 & \text{if } |i - j| = 1, \\ -8 & \text{if } |i - j| = 2 \text{ or } |i - j| = n - 1, \\ -11 & \text{if } |i - j| = 3 \text{ or } |i - j| = n - 2, \\ -12 & \text{otherwise.} \end{cases}$$



### 3. Cartan involutions

#### 3.1. Hyperbolic reflection groups

As noted in the Introduction we make crucial use of Vinberg's [Vi1], [Vi2] as well as Nikulin's [N1] results concerning the size of groups generated by hyperbolic reflections. Before reviewing this arithmetic theory we begin with quadratic forms and hyperbolic space over the reals. A non-degenerate real quadratic form  $f(x_1, \dots, x_n)$  with corresponding symmetric bilinear form  $(\cdot, \cdot)$  is determined by its signature. Our interest is in the case where  $f$  has signature  $(-1, 1, \dots, 1)$ , which after a real linear change of variable can be brought to the form

$$f(x_1, \dots, x_n) = -x_1^2 + x_2^2 + \dots + x_n^2. \quad (3.1)$$

The null cone  $C$  of  $f$  is  $\{x \mid (x, x) = 0\}$  as depicted in Figure 1.

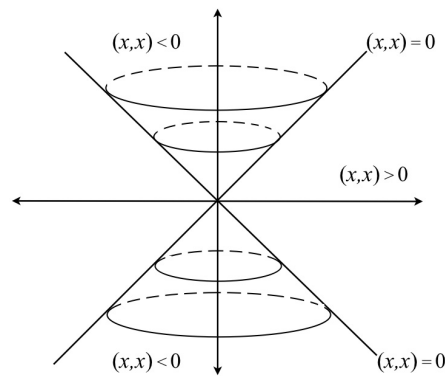


Fig. 1

$\mathbb{R}^n \setminus C$  consists of three components: the outside,  $(x, x) > 0$ , which consists of one component, and the inside,  $(x, x) < 0$ , which consists of two components:  $x_1 > 0$  and  $x_1 < 0$ . The quadrics  $(x, x) = k$  where  $k < 0$  are two-sheeted hyperboloids and either sheet, say the one with  $x_1 > 0$  and  $k = -2$ , can be chosen as a model of hyperbolic  $(n - 1)$ -dimensional space (we assume that  $n \geq 3$ ),  $\mathbb{H}^{n-1}$ . This is done by restricting the line element  $ds^2 = -dx_1^2 + dx_2^2 + \dots + dx_n^2$  to  $\mathbb{H}^{n-1}$ . The quadrics  $(x, x) = k$  with  $k > 0$  are one-sheeted hyperboloids. If  $g \in O_f(\mathbb{R})$ , the real orthogonal group of  $f$ , then  $g$  preserves the quadrics, but it may switch the sheets of the two-sheeted hyperboloid. If  $g$  preserves each of these, then it acts on  $\mathbb{H}^{n-1}$  isometrically, while if  $g$  switches the sheets then  $-g$  acts isometrically on  $\mathbb{H}^{n-1}$ . In either case we obtain an induced isometry. Of particular interest to us are linear reflections of  $\mathbb{R}^n$  given by  $v$ 's with  $(v, v) \neq 0$  (i.e. not on the null cone). For such a  $v$  denote by  $r_v$  the linear transformation

$$r_v(y) = y - \frac{2(v, y)}{(v, v)}v. \quad (3.2)$$

It is easy to see that  $r_v \in O_f$ , that it is an involution, and that it preserves the components of the complement of the light cone if  $(v, v) > 0$ , and switches them if  $(v, v) < 0$ . In the

first case, the induced isometry of  $\mathbb{H}^{n-1}$  is a hyperbolic reflection. The fixed point set of  $r_v$  in  $\mathbb{R}^n$  is  $v^\perp = \{y \mid (v, y) = 0\}$  and this intersects  $\mathbb{H}^{n-1}$  in an  $(n - 2)$ -dimensional hyperbolic hyperplane and the induced isometry is a (hyperbolic) reflection about this hyperplane. In the second case,  $(v, v) < 0$ , the induced isometry  $-r_v$  fixes the line  $\ell_v = \{\lambda v \mid \lambda \in \mathbb{R}\}$  and this line meets  $\mathbb{H}^{n-1}$  in a point  $p_v$ . The induced isometry of  $\mathbb{H}^{n-1}$  in this case inverts geodesics in  $p_v$  and is a Cartan involution. These two involutive isometries of  $\mathbb{H}^{n-1}$  are quite different. In the case of a discrete group of motions generated by hyperbolic reflections, there is a canonical fundamental domain, namely the connected component of the complement of the hyperplanes corresponding to all the reflections. This is the starting point to Vinberg’s theory of reflective groups. For groups generated by Cartan involutions there is no apparent geometric approach.

We turn to the arithmetic theory. Let  $L \subset \mathbb{Q}^n$  be a quadratic lattice, that is, a rank  $n$   $\mathbb{Z}$ -module equipped with a non-degenerate integral symmetric bilinear form  $(\cdot, \cdot)$ , whose associated quadratic form  $f(x) = (x, x)$  is rational. The dual lattice  $L^*$  of  $L$  is given by

$$L^* = \{x \in \mathbb{Q}^n \mid (x, y) \in \mathbb{Z} \text{ for all } y \in L\}.$$

It contains  $L$  as a finite sublattice and the invariant factors of  $L$  are defined to be the invariants of the torsion module  $L^*/L$ . The product of these invariants is equal to  $\pm d(L)$ , where  $d(L)$  is the discriminant of  $L$  (that is,  $\det(F)$  where  $F$  is an integral matrix realization of  $f$ ). We assume that  $L \otimes \mathbb{R}$  is hyperbolic and of signature  $(-1, 1, \dots, 1)$ . The  $\mathbb{Z}$  analogue of the null cone is  $C(L) = \{x \in L \mid (x, x) = 0\}$  and that of the quadrics is  $V_k(L) := \{x \in L \mid (x, x) = k\}$  for  $k \in \mathbb{Z}, k \neq 0$ . We assume throughout that  $f$  is isotropic over  $\mathbb{Q}$ , which means that  $C(L) \neq \emptyset$  (and is in fact infinite). The group of integral automorphs of  $L$  is denoted by  $O(L)$  or  $O_f(\mathbb{Z})$ . A primitive vector  $v$  in  $V_k(L)$  is called a  $k$ -root if  $\frac{2v}{k} \in L^*$ . In this case the linear reflection  $r_v$  of  $\mathbb{Q}^n$  given by (3.2) is integral and lies in  $O(L)$ . For  $k = \pm 1$  or  $\pm 2$ ,  $\frac{2v}{k}$  is always in  $L^*$  and we will have occasions where  $k = 4$  yields root vectors as well. As discussed above, the root vectors with  $k > 0$  induce hyperbolic reflections on  $\mathbb{H}_f^{n-1}$  (which we choose to be one of the components of  $V_{-2}(\mathbb{R}) = \{x \in L \otimes \mathbb{R} \mid (x, x) = -2\}$ ) while for  $k < 0$  they induce Cartan involutions.

The Vinberg reflective group  $R(L)$  is the subgroup of  $O(L)$  generated by all hyperbolic reflections coming from root vectors with  $k > 0$ . It is plainly a normal subgroup of  $O(L)$  and the main result in [Vi2] asserts that if  $n \geq 30$  then  $|O(L)/R(L)| = \infty$ . Vinberg’s proof is based on studying the fundamental domain in  $\mathbb{H}^{n-1}$  of  $R(L)$  and relating it to the cusps of  $O(L) \backslash \mathbb{H}^{n-1}$  which correspond to null vectors  $w \in C(L)$ . In particular it uses the assumption that  $f$  is isotropic.

Nikulin’s results [N1] are concerned with the case where  $L$  is even, that is,  $(x, x) \in 2\mathbb{Z}$  for all  $x \in L$ , and the subgroup  $R_2(L)$  generated by all the 2-root vectors in  $L$  (note he chooses  $f$  to have signature  $(1, -1, -1, \dots, -1)$  so that his  $-2$ -root vectors are our 2-root vectors).  $R_2(L)$  is a subgroup of  $R(L)$  and it is also normal in  $O(L)$ . For these he gives a complete classification of all  $L$ ’s for which  $O(L)/R_2(L)$  is finite. There are only finitely many such and for  $n \geq 5$  the list is quite short.  $L$  is called *two-elementary* if  $L^*/L$  is  $(\mathbb{Z}/2\mathbb{Z})^a$  for some  $a$ . If  $L$  is not two-elementary and  $n \geq 5$  and odd (the last condition on  $n$  is what is of interest to us for our applications) then  $|O(L)/R_2(L)| = \infty$  unless  $L$  is

isomorphic to  $U \oplus K$  and  $K$  is one of

$$A_3, A_1 \oplus A_2, A_1 \oplus A_2^2, A_1^2 \oplus A_3, A_2 \oplus A_3, A_1 \oplus A_4, \\ A_5, D_5, A_7, A_3 \oplus D_4, A_2 \oplus D_5, D_7, A_1 \oplus E_8, A_3 \oplus E_8$$

or  $L$  is isomorphic to

$$U(4) \oplus A_1^3, \quad \langle -2^k \rangle \oplus D_4 \quad \text{for } k = 2, 3, 4, \quad \text{or} \quad \langle -2, 3 \rangle \oplus A_2^2.$$

Here the positive definite (2-reflective) lattices  $A_n, D_n, E_n$  are the standard ones (see [C-S]) while  $U = \begin{bmatrix} 0 & 1 \\ 1 & 0 \end{bmatrix}$  and  $U(4) = \begin{bmatrix} 0 & 4 \\ 4 & 0 \end{bmatrix}$ .

As a consequence, unless  $L$  is two elementary or its invariant factors are among the list below,  $|\mathcal{O}(L)/R_2(L)| = \infty$ .

**Table 1**

Dimension	Factors
5	$2 \cdot 3, 4, 2 \cdot 3^3, 4^2 \cdot 2^3, 4 \cdot 4, 4 \cdot 8, 4 \cdot 16$
7	$2 \cdot 3 \cdot 3, 2 \cdot 2 \cdot 4, 3 \cdot 4, 2 \cdot 5, 3 \cdot 2, 4$
9	$8, 4 \cdot 4, 3 \cdot 4, 4, 3 \cdot 3$
11	none
13	4
$\geq 15$	none

### 3.2. Pseudo-reflections and Cartan involutions

The almost interlacing condition on the  $(\alpha, \beta)$ 's ensures that  $H(\alpha, \beta)$  lies in the orthogonal group of a quadratic form  $f$  of signature  $(p, q)$ , i.e.  $(1, \dots, 1, -1, \dots, -1)$  with  $|p - q| = n - 2$ . The form  $f$  is unique up to a scalar multiple and we normalize  $f$  so that  $f(v, v) = -2$  where  $v$  is the vector given in (2.9). In order to determine what type of involution these critical pseudo-reflections  $r_v$  induce on hyperbolic space, we need to determine the number  $p - q$  when  $f$  is so normalized. This can be done by keeping track of the signs in the calculations of [B-H, Proposition 4.4 and Theorem 4.5]. With  $u = v$  in [B-H, (4.5)] (note there is a misprint there:  $D(u)$  should read  $D(x)$ ),  $\eta = 1$ , and  $c = -1$  we have

$$D(x) = (h_1 - I)x = f(x, u)u. \tag{3.3}$$

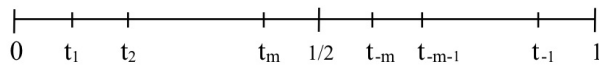
Hence from [B-H, (4.7)] we have, for their orthogonal basis  $u_j$  of  $\mathbb{R}^n$ ,  $j = 1, \dots, n$ ,

$$f(u_j, u_j) = i \exp \left[ 2\pi i \left( \frac{\beta_1 + \beta_2 + \beta_n - \alpha_1 - \alpha_2 - \alpha_n}{2} \right) \right] \\ \cdot 2 \sin \pi(\beta_j - \alpha_j) \cdot \prod_{k \neq j} \frac{\sin \pi(\beta_k - \alpha_j)}{\sin \pi(\alpha_k - \alpha_j)}, \tag{3.4}$$

where we have assumed for simplicity that the  $\alpha_k$ 's and  $\beta_k$ 's are distinct.

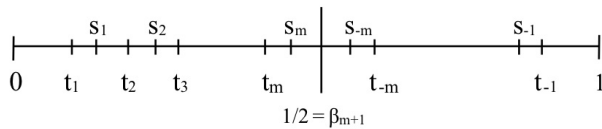
To determine the signs there are two cases:

**Case 1:**  $\alpha_1 = 0$ . We write  $(\alpha_1, \dots, \alpha_n)$  as  $(0, t_1, \dots, t_m, t_{-m}, \dots, t_{-1})$  with  $2m + 1 = n$ .



Here  $t_j = 1 - t_{-j}$  for  $j = 1, \dots, m$  (which corresponds to self-duality of  $\alpha, \beta$ ).

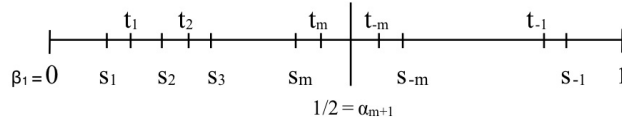
Writing  $\beta$ 's similarly as  $(\beta_1, \dots, \beta_n) = (s_1, \dots, s_m, 1/2, s_{-m}, \dots, s_{-1})$  with  $s_j = 1 - s_{-j}$  for  $j = 1, \dots, m, 2m + 1 = n$ , we find that for the  $\alpha$ 's and  $\beta$ 's to almost interlace the configuration must be



The factor  $i \exp[ ]$  in (3.4) is therefore  $i \exp[2\pi i/4] = -1$  and hence  $f(u_1, u_1) < 0$ . Between every pair  $\alpha_j, \alpha_{j+1}$  but the first one, there are one or three  $\beta$ 's and hence  $f(u_2, u_2) > 0, f(u_3, u_3) > 0, \dots, f(u_n, u_n) > 0$ . That is,  $f$  has signature  $(1, 1, \dots, 1, -1)$ .

**Case 2:**  $\beta_1 = 0$ . Again we can write  $\alpha = (\alpha_1, \dots, \alpha_n) = (t_1, \dots, t_m, 1/2, t_{-m}, \dots, t_{-1})$  and  $\beta = (\beta_1, \dots, \beta_n) = (0, s_1, \dots, s_m, s_{-m}, \dots, s_{-1})$ , with  $t_{-m} = 1 - t_m$  and  $s_{-m} = 1 - s_m$ .

To almost interlace we must have the configuration



Hence the factor  $i \exp[ ]$  in (3.4) is this time  $i \exp[-2\pi i/4] = 1$ . Hence  $f(u_1, u_1) > 0$ , as are  $f(u_2, u_2), \dots, f(u_m, u_m)$ . Since there are no  $\beta$ 's in  $(t_m, 1/2)$  and  $(1/2, t_{-m})$ , we have  $f(u_m, u_m) < 0$  and  $f(u_{m+1}, u_{m+1}) > 0$  as are the rest of the  $f(u_j, u_j)$  for  $m + 1 < j \leq n$ . Hence the signature of  $f$  is again  $(1, \dots, 1, -1)$ .

Thus in all cases (that is, the two above as well as those where some of the  $\alpha$ 's coincide, in which case one deduces the signs by a limiting argument) we find that if  $f$  is normalized so that  $f(v, v) = -2$  then  $f$  has signature  $(1, \dots, 1, -1)$ . In particular  $v$  always lies inside the null cone and  $r_v$  induces a Cartan involution. This is in sharp contrast to the involutions in  $O_f(\mathbb{Z})$  that arise in the theory of  $K3$ -surfaces in [N1] and [Vi1], which in our normalization have  $f(v, v) = 2$  and hence induce hyperbolic reflections.

### 3.3. An example of a non-thin Cartan subgroup

The goal of this short section is to give an example of a hyperbolic lattice  $O(L)$  whose reflection group  $R_2(L)$  is thin while the Cartan subgroup  $R_{-2}(L)$  is of finite index.

Define a quadratic form

$$f(x_1, x_2, x_3, x_4) := 2x_1^2 + 5x_2^2 + 10x_3^2 - x_4^2 \quad (3.5)$$

and let  $O(L)$  be the orthogonal group of  $f$  over  $\mathbb{Z}$ . The following facts can be found in [E-G-M, pp. 474–477].

**Fact 1.**  $R_2(L)$  is thin.

**Fact 2.**  $R_2(L)$  is generated by four reflections  $\sigma_1, \sigma_2, \sigma_3, \sigma_4$ , and  $\sigma_2, \sigma_3$  belong to the center of  $R_2(L)$ . Thus,  $R_2(L)$  is isomorphic to a quotient of  $C_2 \times C_2 \times D_\infty$  where  $D_\infty$  is the infinite dihedral group. In particular any element of  $R_2(L)$  which has infinite order generates a finite index subgroup.

**Fact 3.**  $O(L)$  is isomorphic to the semidirect product  $R_2(L) \rtimes D_\infty$ . Under this isomorphism  $D_\infty$  is generated by the following two involutions:

$$g := \begin{bmatrix} 1 & 0 & 0 & 0 \\ 0 & -2 & -2 & 1 \\ 0 & -1 & -3 & 1 \\ 0 & -5 & -10 & 4 \end{bmatrix}, \quad h := \begin{bmatrix} -2 & 0 & -5 & 2 \\ 0 & 1 & 0 & 0 \\ -1 & 0 & -6 & 2 \\ -4 & 0 & -20 & 7 \end{bmatrix}.$$

We start by showing that  $R_{-2}(L)$  is not contained in  $R_2(L)$ . A direct computation shows that  $\mathbb{Q}^4$  is decomposed as  $V^+ \oplus V^-$  where  $V^+ := \{v \in \mathbb{Q}^4 \mid hv = v\}$  and  $V^- := \{v \in \mathbb{Q}^4 \mid hv = -v\}$ . In addition  $u := (1 \ 1 \ 1 \ 4)^t \in V^+$  satisfies  $f(u) = 1$  so the reflection  $r_u$  is integral. Let  $w$  be an element of  $V^+$  orthogonal to  $u$ . Since  $f|_{V^+}$  is not positive definite,  $(w, w) < 0$ . Notice that:

$$\forall v \in V^- \quad hr_u(v) = -v, \quad (3.6)$$

$$hr_u(u) = -u, \quad (3.7)$$

$$hr_u(w) = w. \quad (3.8)$$

Thus, the Cartan involution  $r_w = hr_u$  is integral and does not belong to  $R_2(L)$ .

Denote  $r_1 := r_w, r_2 := r_w^{gh}$  and  $\Lambda := \langle r_1, r_2 \rangle$ . The Cartan involutions  $r_1$  and  $r_2$  have distinct images in  $O(L)/R_2(L) \simeq D_\infty$ . Thus,  $\Lambda R_2(L)/R_2(L)$  is of finite index in  $O(L)/R_2(L)$ . In other words  $R_2(L)\Lambda$  is of finite index in  $O(L)$ .

By the second isomorphism theorem,

$$\Lambda/(\Lambda \cap R_2(L)) \simeq \Lambda R_2(L)/R_2(L). \quad (3.9)$$

Every proper quotient of  $D_\infty$  is finite so  $\Lambda \cap R_2(L)$  is trivial. In particular, the group generated by  $\Lambda$  and  $R_2(L)$  is in fact a semidirect product. Assume for the moment that  $\sigma_1$  does not commute with  $r_1$ . Then  $r_3 := \sigma_1 r_1 \sigma_1 \in R_2(L)\Lambda$  is a Cartan involution different from  $r_1$  so  $r_1 r_3$  has infinite order. Moreover, since  $R_2(L)$  is normal in  $O(L)$ , we have  $r_1 r_3 \in R_2(L)$  so by Fact 2 the group generated by  $r_1 r_3$  has finite index in  $R_2(L)$ . Altogether,  $\langle r_1, r_2, r_3 \rangle$  has finite index in  $R_2(L)\Lambda$  and in  $O(L)$ .

Finally,  $\sigma_1$  and  $r_1$  do not commute since

$$r_1 := \begin{bmatrix} -6 & -10 & -25 & 10 \\ -4 & -9 & -20 & 8 \\ -5 & -10 & -26 & 10 \\ -20 & -40 & -100 & 39 \end{bmatrix}, \quad \sigma_1 := \begin{bmatrix} -1 & 0 & 0 & 0 \\ 0 & 1 & 0 & 0 \\ 0 & 0 & 1 & 0 \\ 0 & 0 & 0 & 1 \end{bmatrix}.$$

#### 4. The minimal distance graph and thin families

##### 4.1. The distance graph

In this section we derive a sufficient condition for a subgroup  $\Delta$  of  $O(L)$  which is generated by Cartan involutions to have finite image in  $O(L)/R_k(L)$  with  $k = 2$  or  $4$ . Here  $L$  is an integral quadratic lattice of signature  $(-1, 1, \dots, 1)$  and our notation is the same as in Section 3. We say  $L$  is *even* if  $(x, x) = f(x)$  is even for all  $x \in L$  but  $f(x, y)$  is odd for some  $x, y \in L$ . If the latter fails, that is,  $f(x, y)/2$  is integral for all  $x, y \in L$  and  $f(x, x)/2$  is odd for some  $x \in L$  (which will always be the case for us) then  $f/2$  is odd and if there is no room for confusion we say that  $f$  itself is *odd*. If  $f$  is even we will make use of the hyperbolic reflection group  $R_2(L)$ , while if  $f$  is odd we will use  $R_4(L)$ . The following diophantine lemma is crucial for what follows.

**Lemma 4.1.** *Assume  $u, w \in \mathbb{Z}^n$  satisfy  $(u, u) = (w, w) = -2$  and  $(u, w) = -3$ .*

(i) *If  $f$  is even and  $u$  and  $w$  are in  $V_{-2}(L)$  with  $(u, w) = -3$  then*

- (1)  $(u - w, u - w) = (u - 2w, u - 2w) = 2$ .
- (2)  $r_u r_w = r_{u-w} r_{u-2w}$ .
- (3)  $r_{u-w}(u) = w$ .

(ii) *If  $f$  is odd (i.e.  $(\ , \ )/2$  is integral and odd) and  $u$  and  $w$  are in  $V_{-2}(L)$  with  $(u, w) = -4$  then*

- (1)  $(u - w, u - w) = (u - 3w, u - 3w) = 4$ .
- (2)  $r_u r_w = r_{u-w} r_{u-3w}$ .
- (3)  $r_{u-w}(u) = w$ .

*Proof.* Part (1) of both (i) and (ii) is immediate. As for parts (2) and (3) of (i), note that since  $r_u, r_w, r_{u-w}$ , and  $r_{u-2w}$  all fix the orthogonal complement  $\langle u, w \rangle^\perp$  of the span of  $u$  and  $w$ , it suffices to check (2) on the two-dimensional space  $\langle u, w \rangle$ ; that is, to check the identity on  $u$  and  $w$ . Now a direct calculation shows that

$$\begin{aligned} r_u(u) &= -u, & r_u(w) &= w - 3u, \\ r_w(u) &= u - 3w, & r_w(w) &= -w, \\ r_{u-w}(u) &= w, & r_{u-w}(w) &= u, \\ r_{u-2w}(u) &= -3u + 8w, & r_{u-2w}(w) &= -u + 3w. \end{aligned}$$

Hence with respect to the basis  $u, w$  of  $\langle u, w \rangle$  we have

$$r_u = \begin{bmatrix} -1 & -3 \\ 0 & 1 \end{bmatrix}, \quad r_w = \begin{bmatrix} 1 & 0 \\ -3 & -1 \end{bmatrix}, \quad r_{u-w} = \begin{bmatrix} 0 & 1 \\ 1 & 0 \end{bmatrix}, \quad r_{u-2w} = \begin{bmatrix} -3 & -1 \\ 8 & 3 \end{bmatrix},$$

and parts (2) and (3) of (i) follow. Similarly in the basis  $u, w$  of  $\langle u, w \rangle$  we have

$$r_u = \begin{bmatrix} -1 & -4 \\ 0 & 1 \end{bmatrix}, \quad r_w = \begin{bmatrix} 1 & 0 \\ -4 & -1 \end{bmatrix}, \quad r_{u-w} = \begin{bmatrix} 0 & 1 \\ 1 & 0 \end{bmatrix}, \quad r_{u-3w} = \begin{bmatrix} -4 & -1 \\ 15 & 4 \end{bmatrix},$$

and hence (2) and (3) of (ii) hold.  $\square$

**Remark 4.2.** The factorization of  $r_u r_w$  as a product of two *integral* hyperbolic reflections in part (2) of both (i) and (ii) in the previous lemma has its source in the binary integral quadratic forms  $f_1 = -2x^2 - 6xy - 2y^2$  and  $f_2 = -2x^2 - 8xy - 2y^2$  being reciprocal in that  $f_1$  and  $f_2$  are integrally equivalent to  $-f_1$  and  $-f_2$ , respectively. As shown in [S2], this property is quite rare and one can check directly (or by the classification in [S2]) that  $x^2 + kxy + y^2$  with  $k \geq 3$  is reciprocal if and only if  $k = 3$  or  $4$ , and these two cases correspond to  $f_1$  and  $f_2$  above.

Lemma 4.1 leads us to the definition of the minimal distance graph associated with  $f$ .

**Definition 4.3.** The *minimal distance graph*  $X_f$  of  $f$  is the graph with vertex set  $V_{-2}(L)$  (i.e. the set of Cartan involutions coming from length  $-2$  roots) and edge set

$$E_f := \begin{cases} \{\{u, w\} \mid (u, w) = -3\} & \text{if } f \text{ is even,} \\ \{\{u, w\} \mid (u, w) = -4\} & \text{if } f \text{ is odd.} \end{cases}$$

The name minimal distance graph comes from the fact that if  $u$  and  $w$  are in  $V_{-2}(L)$  then as points of hyperbolic space  $\mathbb{H}^{n-1} \cong V_{-2}(L) \otimes \mathbb{R}$  the distance from  $u$  to  $w$  is equal to  $\cosh^{-1}(-(u, w)/2)$ . Hence if  $(u, w) = -3$  when  $f$  is even or  $-4$  when  $f$  is odd, then clearly the integrality of  $(\cdot, \cdot)$  on  $L$  implies that  $(u, w)$  has the minimal admissible distance as members of  $V_{-2}(L)$ .

**Proposition 4.4.** Let  $S$  be a connected component of  $X_f$ . Then the image of  $\langle r_u \mid u \in S \rangle$  in  $O(L)/R_2(L)$  (respectively  $O(L)/R_4(L)$ ) is of order at most two.

*Proof.* Let  $w_1, \dots, w_m$  be a path in  $X_f$ . We have

$$r_{w_1} r_{w_m} = (r_{w_1} r_{w_2})(r_{w_2} r_{w_3}) \cdots (r_{w_{m-1}} r_{w_m}),$$

which according to Lemma 4.1 in the case of  $f$  even (and a similar conclusion when  $f$  is odd) gives

$$r_{w_1} r_{w_m} = (r_{w_1-2w_2} r_{w_1-2w_2})(r_{w_2-2w_3} r_{w_2-2w_3}) \cdots (r_{w_{m-1}-2w_m} r_{w_{m-1}-2w_m}).$$

Now the elements in each parenthesis above lie in  $R_2(L)$ , and hence  $r_{w_1} r_{w_m} \in R_2(L)$ , from which the proposition follows directly.  $\square$

Our certificate for a subgroup  $\Delta$  of  $O(L)$  generated by Cartan roots  $v$  in  $V_{-2}(L)$  to be of infinite index in  $O(L)$  is now clear. If the generators of  $\Delta$  all lie in the same connected component of  $X_f$  then the image of  $\Delta$  in  $O(L)/R_k(L)$  with  $k = 2$  or  $4$  is finite. Hence if  $|O(L)/R_k(L)| = \infty$  then  $\Delta$  is thin.

We turn to the structure of the minimal distance graph  $X_f$ , which can be determined both theoretically and algorithmically. In particular we show that the question whether  $u$  and  $z$  belong to the same connected component of the minimal distance graph can be decided effectively.

First note that  $O(L)$  acts on  $X_f$  isometrically (that is, every  $\gamma \in O(L)$  maps  $X_f$  to  $X_f$  as a graph isomorphism) and with finitely many orbits. This action permutes the connected components of  $X_f$  and thus there are only finitely many types of components. To examine the components we identify a subgroup of  $O(L)$  which stabilizes and acts transitively on a given component  $\Sigma$ .

**Proposition 4.5.** *Let  $\Sigma$  be a connected component of  $X_f$  and let  $u$  be a vertex of  $\Sigma$ . Assume that  $u$  is not the only vertex in  $\Sigma$  and denote by  $u_1, \dots, u_k$  its immediate neighbors. Let*

$$G_u := \langle r_{w_j} \mid w_j = u - u_j, j = 1, 2, \dots, k \rangle. \quad (4.1)$$

*Then  $G_u$  preserves  $\Sigma$  and acts transitively.*

*Proof.* Lemma 4.1 shows that  $r_{w_j} \in O(L)$  and since  $r_{w_j}$  switches  $u$  and  $u_j$  it follows that  $r_{w_j}(\Sigma) = \Sigma$  and hence  $G_u(\Sigma) = \Sigma$ . To see that it acts transitively, we proceed by induction on the distance of points in  $\Sigma$  from  $u$  (in the graph metric). The  $u_j$ 's with  $d_X(u, u_j) = 1$  are joined to  $u$ . By the choice of the  $r_{w_j}$ 's these points are in  $G_u(u)$ . For  $u^* \in \Sigma$  and  $d_X(u, u^*) = m > 1$  pick  $\bar{u} \in \Sigma$  for which  $d_X(u, \bar{u}) = m - 1$  and  $d_X(\bar{u}, u^*) = 1$ . By induction there is a  $g \in G_u$  such that  $g(\bar{u}) = u$  and hence  $g(u^*) = u_j$  for some  $j$ . Thus,  $u^* = g^{-1}r_{w_j}(u)$  and  $u^* \in G_u(u)$ .  $\square$

We continue our examination of  $\Sigma$  and  $G_u$  with a general discussion of finding algorithmically a fundamental domain for any discrete group of motions generated by a finite number of reflections  $t_1, \dots, t_k$  (below we will apply this to  $G_u$ ). Now, given any discrete group  $\Phi$  of hyperbolic motions of  $\mathbb{H}^n$  which is generated by reflections, it has a polyhedral fundamental domain as follows: Let  $R$  be the set of *all* reflections in  $\Phi$ . For  $r \in R$  let  $H_r$  denote the corresponding hyperplane fixed by  $r$  (the “wall” of  $r$ ). The set of  $H_r$ 's decompose  $\mathbb{H}^n$  into connected convex polyhedral cells each of which is a fundamental domain for  $\Phi$ . These cells are defined canonically and up to their motions by  $\Phi$  are unique. We are interested in determining one of these cells algorithmically. Assuming that one can determine all the  $H_r$ 's which meet any compact set (there being finitely many by discreteness), Vinberg [Vi1] gives an effective algorithm to compute a cell of  $\Phi$ . In our case of  $\Phi$  being generated by  $t_1, \dots, t_k$  we do not know a priori which  $r$ 's are in  $R$  so we proceed with a somewhat different algorithm.

For a suitably chosen point  $v \in \mathbb{H}^n$  the algorithm computes the cell  $P_v$  of  $\Phi$  which contains  $v$  as an interior point. Here suitable means that  $v$  does not lie in any of the  $H_r$ 's for  $r \in R$ . While such  $v$  exist by discreteness of  $\Phi$ , choosing  $v$  might look problematic since we do not have a list of the members of  $R$ . However all that we need is an upper



bound on  $R$  and this is something that usually comes with the source of  $\Phi$  being discrete. So if  $\Phi \subseteq O(L)$  then  $R$  is contained in the set of all reflections in  $O(L)$ , which locally is easy to determine. These provide us with effective upper bounds for  $R$  and an ample supply of explicit points for  $v$ . Given  $\Phi \subseteq O(L)$  let  $\bar{R}$  be the set of reflections in  $O(L)$  and define  $Q := \{H_r \mid r \in \bar{R}\}$ . For  $H \in Q$  let  $d(v, H)$  be the distance in  $\mathbb{H}^n$  from  $v$  to  $H$ . There is a unique  $w_H$  in  $H$  which is the point in  $H$  closest to  $v$ , so that  $d(v, H) = d(v, w_H)$ . The set  $D := \{d(v, H) \mid H \in Q\}$  is a discrete subset of  $(0, \infty)$  and has a smallest element. Note that the size of the smallest element can be effectively computed from the form preserved by  $O(L)$ . For a finite multiset  $T \subseteq Q$  (we allow repetitions in  $T$ ) define the height  $h(T) = h_v(T)$  to be

$$h(T) := \sum_{H \in T} d(v, H) = \sum_{h \in T} d(v, w_H). \quad (4.2)$$

It is clear from the properties of  $D$  that

$$\{h(T) \mid T \subseteq Q \wedge |T| < \infty\} \cap [0, x]$$

is finite for every  $x > 0$  and can be effectively bounded from above in terms of  $x$ .

Let  $T = \{H_1, \dots, H_l\} \subseteq R$  be a multiset and let  $G(T)$  denote the group generated by  $t_1, \dots, t_l$  where  $t_j$  is the reflection in  $H_j$ . The algorithm inputs  $R := \{H_1, \dots, H_l\}$  corresponding to the generators  $r_1, \dots, r_l$  of  $\Phi$  and proceeds to replace  $T$  with a multiset  $\bar{T} \subseteq R$  by one of three steps, each of which reduces the height of  $T$  and possibly  $|T|$  while maintaining  $G(T) = G(\bar{T})$ . This process is repeated until no moves are possible and this happens after effectively bounded number of steps. When this process stops, it outputs the fundamental cell for  $\Phi$  containing  $v$  as an interior point.

**Step 1 (Repetition):** If any of the  $H_j$ 's in  $T$  are duplicated then place one of them in  $\bar{T}$ . Clearly  $h(\bar{T}) < h(T)$ ,  $|\bar{T}| < |T|$  and  $G(T) = G(\bar{T})$ .

**Step 2 (Redundant faces):** For every one of the hyperplanes  $H_1, \dots, H_l$  in  $T$  let  $H_j^-$  be the closed half-space of  $\mathbb{H}^n$  determined by  $H_j$  and containing  $v$ . Let

$$K := \bigcap_{1 \leq j \leq l} H_j^-, \quad (4.3)$$

which clearly contains  $v$  as an interior point. Assume that some  $H_j$ , say  $H_1$ , is redundant (this means  $K = \bigcap_{2 \leq j \leq l} H_j^-$ ). There are two cases to consider.

If  $w_{H_1} \notin P$  then there must be some  $H_j$ , call it  $H_2$ , which separates  $w_{H_1}$  from  $v$ . But then  $\text{dist}(v, t_2(H_1)) \leq \text{dist}(v, t_2(w_{H_1})) < \text{dist}(v, w_{H_1})$ . Hence, if we replace  $H_1$  by  $t_2(H_1)$  and  $t_1$  by  $t_2 t_1 t_2$  we get  $\bar{T} := \{t_2(H_1), H_2, \dots, H_l\}$  with  $|\bar{T}| = |T|$ ,  $h(\bar{T}) < h(T)$  and  $G(\bar{T}) = G(T)$ .

If  $w_{H_1} \in K$  then there must be some  $H_j$ , call it  $H_2$ , such that  $H_2$  passes through  $w_{H_1}$ . Let  $M$  be the 2-dimensional plane containing  $v$ ,  $w_{H_1}$  and  $w_{H_2}$ . Note that  $M$  is invariant under  $t_1$  and  $t_2$ . Since  $H_2$  does not contain  $v$ ,  $H_2 \cap M$  does not contain the geodesic connecting  $v$  to  $w_{H_1}$ . Thus,  $H_2 \cap M$  is not orthogonal to  $H_1 \cap M$  so  $\text{dist}(v, t_2(H_1)) < \text{dist}(v, H_1)$ . Hence, if we replace  $H_1$  by  $t_2(H_1)$  and  $t_1$  by  $t_2 t_1 t_2$  we get  $\bar{T} := \{t_2(H_1), H_2, \dots, H_l\}$  with  $|\bar{T}| = |T|$ ,  $h(\bar{T}) < h(T)$  and  $G(\bar{T}) = G(T)$ .

**Step 3 (Dihedral angles):** Let  $T$  and  $K$  be as above. Suppose that two  $(n - 1)$ -dimensional faces, say  $H_1$  and  $H_2$ , meet and the dihedral angle  $\alpha$  between them is not a submultiple of  $\pi$ . We can furthermore assume that  $\text{dist}(v, H_2) \leq \text{dist}(v, H_1)$ . Since  $\Phi$  is discrete and  $\alpha$  is not a submultiple of  $\pi$ ,  $\alpha = (p/q)\pi$  with  $(p, q) = 1$  and  $p \geq 2$ . Let  $M$  be the 2-dimensional plane containing  $v, w_{H_1}$ , and  $w_{H_2}$ . One checks that  $M$  is invariant under  $t_1$  and  $t_2$ , and the intersection  $M \cap H \cap L$  is a point  $p$ . Moreover, the dihedral angle between the geodesics  $h_1 := H_1 \cap M$  and  $h_2 := H_2 \cap M$  is  $\alpha$ . Thus, we are reduced to the case of the hyperbolic plane with reflections in  $h_1$  and  $h_2$  which meet at an angle  $\alpha$ . We identify  $t_1$  and  $t_2$  with their restrictions to  $M$  (both act as the identity on the  $(n - 2)$ -dimensional plane passing through  $p$  and orthogonal to  $M$ ). Now,  $g := t_1 t_2$  is a rotation about  $p$  by an angle of  $2\alpha = (2p/q)\pi$ . Thus, there exists an  $m$  such that  $\bar{g} = g^m$  is a rotation about  $p$  by an angle of  $(2/q)\pi$ . There are two cases to consider.

If  $p$  is odd choose  $s$  such that  $\bar{h} := \bar{g}^s(h_1) \cap M$  intersects the interior of  $M \cap h_1^- \cap h_2^-$  and the angle between  $\bar{h}$  and  $h_2$  is  $(1/q)\pi$  (where  $h_i^- := M \cap H_i^-$ ). Then  $\text{dist}(v, \bar{h}) < \text{dist}(v, h_1)$ . Hence, if we replace  $H_1$  by  $\bar{g}^s(H_1)$  and  $t_1$  by  $\bar{g}^s t_1 \bar{g}^{-s}$  we get  $\bar{T} := \{\bar{g}^s(H_1), H_2, \dots, H_l\}$  with  $|\bar{T}| = |T|$ ,  $h(\bar{T}) < h(T)$  and  $G(\bar{T}) = G(T)$  (the last assertion is true since the group generated by the reflections in  $h_1$  and  $\bar{h}$  contains a rotation about  $p$  by angle  $(2p/q)\pi$  so it must be equal to the group generated by  $t_1$  and  $t_2$ ).

If  $p$  is even then  $q$  must be odd. Choose  $s$  such that  $\bar{h} := \bar{g}^s(h_2) \cap M$  intersects the interior of  $M \cap h_1^- \cap h_2^-$  and the angle between  $\bar{h}$  and  $h_2$  is  $(1/q)\pi$ . Then  $\text{dist}(v, \bar{h}) < \text{dist}(v, h_1)$ . Hence, if we replace  $H_1$  by  $\bar{g}^s(H_2)$  and  $t_1$  by  $\bar{g}^s t_2 \bar{g}^{-s}$  we get  $\bar{T} := \{\bar{g}^s(H_2), H_2, \dots, H_l\}$  with  $|\bar{T}| = |T|$ ,  $h(\bar{T}) < h(T)$  and  $G(\bar{T}) = G(T)$ .

After repeating the algorithm a finite number of times, we arrive at a reduced  $T = \{H_1, \dots, H_l\}$ , namely one for which we cannot apply any of the above steps, and we set  $P_v := \bigcap_{i=1}^l H_i^-$ . The polyhedron  $P_v$  contains  $v$  and an interior point and since we cannot apply Step 2,  $P_v \cap H_j$  is an  $(n - 1)$ -dimensional face of  $P_v$  for every  $1 \leq j \leq l$  (and any  $(n - 1)$ -dimensional face is of this form). Moreover, all the dihedral angles between pairs of  $(n - 1)$ -faces of  $P_v$  are submultiples of  $\pi$  (including 0 as a submultiple when the faces are not adjacent and the corresponding  $H_j$ 's do not intersect in  $\mathbb{H}^n$ ). It follows from Vinberg [Vi1] that  $P_v$  is a fundamental polyhedron for the group generated by reflections in the  $(n - 1)$ -dimensional faces of  $P_v$ , which is just the group  $\Phi$ . Moreover, this group is a Coxeter group with generators  $t_1, \dots, t_l$  and the usual relations are derived from the corresponding Coxeter matrix. This completes the general discussion of finding a fundamental domain for  $\Phi$ .

We now return to the group  $G_u$  defined in Proposition 4.5 which is generated by the reflections  $r_1, \dots, r_k$ . Applying the general algorithm we find that  $G_u = \langle t_1, \dots, t_l \rangle$  with  $l \leq k$  and  $t_1, \dots, t_l$  reflections in the faces of a fundamental reflective polyhedron  $P_v$ . Using these canonical generators of  $G_u$  we can decide if a given  $z \in X_f$  is in the same connected component as  $u$ , that is, whether  $z \in G_u(u)$ . With  $V_{-2}$  as a model for  $\mathbb{H}^n$  it is a matter of reducing  $z$  into  $P_v$  and checking if this reduction is the same as the one for  $u$  into  $P_v$  (every orbit of  $G_u$  has a unique representative on  $P_v$ ; this is also true for orbits intersecting the boundary of  $P_v$ ). Now, if  $z \notin P_v$  then there is some  $t_j$  such that  $z \notin H_{t_j}^-$ , but then  $\text{dist}(v, t_j(z)) < \text{dist}(v, z)$ . Of course  $t_j(z)$  is the same  $G_u$  orbit as  $z$ . Repeat this

reduction to  $t_j(z)$  if it is not in  $P_v$ ; continuing this for a finite number of steps must place it in  $P_v$  (by discreteness). If the point we arrive at is the same as the reduction of  $u$  into  $P_v$  then  $z \in \Sigma = G_u(u)$ , otherwise  $z \notin \Sigma$ .

#### 4.2. Thin families

Using the minimal distance graph and the results reviewed in Section 3, we apply our thinness certificate to various hyperbolic hypergeometric monodromy groups. Recall that every  $H = H(\alpha, \beta)$  is generated by two matrices  $A, B \in \mathrm{GL}_n(\mathbb{Z})$  for some odd  $n \in \mathbb{N}$ . Moreover, there is an integer quadratic form  $(u_1, u_2) = u_1^t f u_2$  of signature  $(n-1, 1)$  preserved by  $H$ . The matrix  $C := A^{-1}B$  has an eigenvalue  $-1$  of algebraic multiplicity 1 with a corresponding eigenvector  $v \in \mathbb{Z}^n$ . The elements  $v, Bv, \dots, B^{n-1}v$  are linearly independent and the  $\mathbb{Z}$ -lattice  $L$  they span is preserved by  $H$ . Proposition 2.10 implies we can normalize  $f$  to have  $(v, v) = -2$  and still be integral on  $L$ . The group  $H$  is of infinite index in the integral orthogonal group of the original form if and only if its restriction to  $L$  is of infinite index in the integral orthogonal group of the normalized form. Thus by restricting to  $L$ , we can assume from now on that  $f$  is normalized so that  $(v, v) = -2$  and  $-C$  is a Cartan involution. If  $B$  has finite order then the group  $\langle B^i C B^{-i} \mid i \in \mathbb{N} \rangle$  is a finite index normal subgroup of  $H$ . Thus,  $H$  is thin if and only if

$$H_r := \langle B^i(-C)B^{-i} \mid i \in \mathbb{Z} \rangle$$

is thin in  $\mathrm{O}_f(Z)$ . The advantage of considering  $H_r$  is clear: this group is generated by Cartan involutions, so we can apply Proposition 4.4. We begin by noting the following.

**Lemma 4.6.** *If  $v$  and  $Bv$  belong to the same component of  $X_f$  then  $H$  is thin.*

*Proof.* The group  $H_r$  is generated by the set  $\{r_{B^i v} \mid i \in \mathbb{Z}\}$  of Cartan involutions. Since  $B$  preserves  $f$ , if  $v$  and  $Bv$  belong to the same connected component then also  $B^i v$  and  $B^{i+1}v$  belong to the same connected component for every  $i \in \mathbb{N}$ . Thus,  $\{r_{B^i v} \mid i \in \mathbb{Z}\}$  is contained in one connected component, so  $H_r$  is thin by Proposition 4.4. Hence,  $H$  is thin by the above paragraph.  $\square$

We now prove the following.

**Theorem 4.7.** *The following subfamilies of hyperbolic hypergeometric monodromy groups are thin ( $n$  is always odd):*

(1)  $\mathcal{N}_1(1, n, n)$ ,  $n > 3$ :

$$\alpha = \left(0, \frac{1}{n+1}, \dots, \frac{n-1}{2(n+1)}, \frac{n+3}{2(n+1)}, \dots, \frac{n}{n+1}\right), \quad \beta = \left(\frac{1}{2}, \frac{1}{n}, \frac{2}{n}, \dots, \frac{n-1}{n}\right);$$

(2)  $\mathcal{M}_1(1, n)$ ,  $n > 3$ :

$$\alpha = \left(0, \frac{1}{2n}, \frac{3}{2n}, \dots, \frac{n-2}{2n}, \frac{n+2}{2n}, \dots, \frac{2n-3}{2n}, \frac{2n-1}{2n}\right),$$

$$\beta = \left(\frac{1}{2}, \frac{1}{2n-2}, \frac{3}{2n-2}, \dots, \frac{2n-5}{2n-2}, \frac{2n-3}{2n-2}\right);$$

(3)  $\mathcal{N}_1(1, 1, n)$ ,  $n > 30$ :

$$\alpha = \left(0, \frac{1}{2n}, \frac{3}{2n}, \dots, \frac{n-2}{2n}, \frac{n+2}{2n}, \dots, \frac{2n-3}{2n}, \frac{2n-1}{2n}\right), \quad \beta = \left(\frac{1}{2}, \frac{1}{n}, \frac{2}{n}, \dots, \frac{n-1}{n}\right);$$

(4)  $\mathcal{M}_2(n - 2, n), n > 3:$

$$\alpha = \left(\frac{1}{2}, \frac{1}{2n-2}, \frac{3}{2n-2}, \dots, \frac{2n-5}{2n-2}, \frac{2n-3}{2n-2}\right), \quad \beta = \left(0, 0, 0, \frac{1}{n-2}, \frac{2}{n-2}, \dots, \frac{n-3}{n-2}\right);$$

(5)  $\mathcal{M}_2((n - 1)/2, n), n > 30, n \not\equiv 1 \pmod 4:$

$$\alpha = \left(\frac{1}{2}, \frac{1}{2n-2}, \frac{3}{2n-2}, \dots, \frac{2n-5}{2n-2}, \frac{2n-3}{2n-2}\right),$$

$$\beta = \left(0, 0, 0, \frac{1}{n-1}, \frac{2}{n-1}, \dots, \frac{n-3}{2(n-1)}, \frac{n+1}{2(n-1)}, \dots, \frac{n-2}{n-1}\right);$$

(6)  $\mathcal{N}_2(1, 1, n), n > 30:$

$$\alpha = \left(0, \frac{1}{2n-2}, \frac{3}{2n-2}, \dots, \frac{2n-3}{2n-2}\right),$$

$$\beta = \left(\frac{1}{2}, \frac{1}{2}, \frac{1}{2}, \frac{1}{n-1}, \frac{2}{n-1}, \dots, \frac{n-3}{2(n-1)}, \frac{n+1}{2(n-1)}, \dots, \frac{n-2}{n-1}\right);$$

(7)  $\mathcal{N}_2(n - 1, 1, n), n > 3:$

$$\alpha = \left(0, \frac{1}{n}, \frac{2}{n}, \dots, \frac{n-1}{n}\right), \quad \beta = \left(\frac{1}{2}, \frac{1}{2}, \frac{1}{2}, \frac{1}{n-1}, \frac{2}{n-1}, \dots, \frac{n-3}{2(n-1)}, \frac{n+1}{2(n-1)}, \dots, \frac{n-2}{n-1}\right);$$

(8)  $\mathcal{N}_1(3, n, n), n > 3$  and  $(n + 1, 3) = 1:$

$$\alpha = \left(0, \frac{1}{n+1}, \dots, \frac{n-1}{2(n+1)}, \frac{n+3}{2(n+1)}, \dots, \frac{n}{n+1}\right), \quad \beta = \left(\frac{1}{2}, \frac{1}{3}, \frac{2}{3}, \frac{1}{n-2}, \dots, \frac{n-3}{n-2}\right).$$

Note that in the cases above where we require  $n > 30$  the form fixed by the group is odd, and we appeal to Vinberg [Vi1] to derive thinness. In the cases where we require  $n > 3$ , the fixed form is even and we appeal to Nikulin [N1] to conclude the group is thin by checking using a computer that none of the  $n < 30$  cases are 2-elementary or belong to the lists at the end of Section 3.1.

*Proof.* (1) Corollary 2.11 shows that  $(v, Bv) = -3$  and we can apply Lemma 4.6.

(2) In this case, the generators of  $H(\alpha, \beta)$  are as in (2.1) with

$$A_i = \begin{cases} 0 & \text{for } 2 \leq i \leq n - 2, \\ 1 & \text{otherwise,} \end{cases} \quad B_i = \begin{cases} -1 & \text{for } i = n, \\ (-1)^i \cdot 2 & \text{for } i < n. \end{cases}$$

Therefore the eigenvector of  $C=A^{-1}B$  with eigenvalue 1 is  $\mathbf{v}=(3, 2, 2, 2, \dots, 2, -1, 2)^t$ . Note that the order of  $B$  is  $2n$ .

The quadratic form  $f$  fixed by  $A$  and  $B$  in the basis  $\{\mathbf{v}, B\mathbf{v}, \dots, B^{n-1}\mathbf{v}\}$  has  $ij$ th entry 3 if  $|i - j| = 1$ , and by Lemma 4.1 the basis vectors are thus in one connected component of  $X_f$  since  $e_i^t f e_{i+1} = 3$  for all  $1 \leq i \leq n - 1$ . To see this, note that the  $n$ th row of  $B^m$  is of the form  $(b_1 \cdots b_n)$  where  $b_i = 0$  for  $i \leq n - m - 1$ ,  $b_{n-m} = 1$ , and  $b_i = 2$  for  $i > n - m$ . Therefore in particular the  $n$ th entry of  $B\mathbf{v}$  is 3 as desired.

(3) In this case the generators of  $H(\alpha, \beta)$  are as in (2.1) with

$$A_i = \begin{cases} 2 & \text{for } 1 \leq i \leq n - 1, \\ 1 & \text{for } i = n, \end{cases} \quad B_i = \begin{cases} -1 & \text{for } i = n, \\ (-1)^i \cdot 2 & \text{for } i < n. \end{cases}$$

The eigenvector of  $C = A^{-1}B$  with eigenvalue 1 is thus  $\mathbf{v} = (4, 0, 4, 0, \dots, 4, 0, 2)^t$ . The order of  $B$  is  $2n$  as in case (2).

In this case the quadratic form  $f$  fixed by  $A$  and  $B$  in the basis of Proposition 2.10 is odd. This follows from the fact that every entry of  $\mathbf{v}$  is even and thus the  $n$ th entry of  $B^m \mathbf{v}$  is even for every  $0 \leq m \leq n-1$ . Furthermore,  $f_{ij} = 4$  if  $|i-j| = 1$  since the  $n$ th entry of  $B \mathbf{v}$  is 4 so  $e_i^t f e_{i+1} = 4$  for  $1 \leq i \leq n-1$ . Since  $f$  is odd, Lemma 4.1 gives us that all of the basis vectors are in the same connected component of  $X_f$ .

(4) In this case the generators of  $H(\alpha, \beta)$  are as in (2.1) with

$$A_i = \begin{cases} (-1)^i & \text{for } i = 2, n-2, n, \\ (-1)^i \cdot 2 & \text{for } i = 1, n-1, \\ 0 & \text{otherwise.} \end{cases} \quad B_i = \begin{cases} 0 & \text{for } 2 \leq i \leq n-2, \\ 1 & \text{otherwise.} \end{cases}$$

The eigenvector of  $C = A^{-1}B$  with eigenvalue 1 is thus  $\mathbf{v} = (3, -1, 0, \dots, 0, 1, -1, 2)^t$ . Here  $B$  is of order  $2n-2$ .

Note that if  $f$  denotes the form fixed by  $A$  and  $B$  then in the basis of Proposition 2.10,  $f_{ij}$  is 3 if  $|i-j| = 1$ , and Lemma 4.1 implies that the basis vectors are in one connected component of  $X_f$  since  $e_i^t f e_{i+1} = 3$  for all  $1 \leq i \leq n-1$ . To see this, note that the  $n$ th row of  $B^m$  is of the form  $(b_1 \cdots b_n)$  where  $b_i = 0$  for  $i \leq n-m-1$  and  $b_i = i-n+m+1$  for  $i \geq n-m$ . Therefore in particular the  $n$ th entry of  $B \mathbf{v}$  is 3 as desired.

(5) In this case the generators of  $H(\alpha, \beta)$  are as in (2.1) with

$$A_i = \begin{cases} -1 & \text{for } i = n, \\ (-1)^i \cdot 3 & \text{for } i = n-1, 1, \\ (-1)^i \cdot 4 & \text{for } 2 \leq i \leq n-2, \end{cases} \quad B_i = \begin{cases} 0 & \text{for } 2 \leq i \leq n-2, \\ 1 & \text{otherwise.} \end{cases}$$

The eigenvector of  $C = A^{-1}B$  with eigenvalue 1 is thus  $\mathbf{v} = (4, -4, 4, -4, \dots, 4, -2, 2)^t$  and  $B$  is of order  $2n-2$ .

As in case (4), the quadratic form  $f$  fixed by  $A$  and  $B$  is odd. Again, this is because every entry of  $\mathbf{v}$  is even and thus the  $n$ th entry of  $B^m \mathbf{v}$  is even for  $0 \leq m \leq n-1$ . Moreover,  $f_{ij} = 4$  for  $|i-j| = 1$  since the  $n$ th entry of  $B \mathbf{v}$  is 4 so  $e_i^t f e_{i+1} = 4$  for  $1 \leq i \leq n-1$ . As  $f$  is odd, Lemma 4.1 shows that all of the basis vectors are in one connected component of  $X_f$ .

(6) Here the generators of  $H(\alpha, \beta)$  are as in (2.1) with

$$A_i = \begin{cases} 1 & \text{for } i = n, \\ 3 & \text{for } i = 1, n-1, \\ 4 & \text{for } 2 \leq i \leq n-2, \end{cases} \quad B_i = \begin{cases} (-1)^i & \text{for } i = 1, n-1, n, \\ 0 & \text{for } 2 \leq i \leq n-2. \end{cases}$$

The eigenvector of  $C = A^{-1}B$  with eigenvalue 1 is thus  $\mathbf{v} = (4, 4, 4, \dots, 4, 2, 2)^t$  and  $B$  is of order  $2n-2$ .

Again, the quadratic form  $f$  fixed by  $A$  and  $B$  in the basis of Proposition 2.10 is even since every entry of  $\mathbf{v}$  is even. Moreover,  $f_{ij} = 4$  for  $|i - j| = 1$  since the  $n$ th entry of  $B\mathbf{v}$  is 4 so  $e_i^t f e_{i+1} = 4$  for  $1 \leq i \leq n - 1$ . As  $f$  is odd, Lemma 4.1 shows that all of the basis vectors are in one connected component of  $X_f$ .

(7) Here the generators of  $H(\alpha, \beta)$  are as in (2.1) with

$$A_i = \begin{cases} 1 & \text{for } i = n, \\ 3 & \text{for } i = 1, n - 1, \\ 4 & \text{for } 2 \leq i \leq n - 2, \end{cases} \quad B_i = \begin{cases} -1 & \text{for } i = n, \\ 0 & \text{for } 1 \leq i \leq n - 1. \end{cases}$$

The eigenvector of  $C = A^{-1}B$  with eigenvalue 1 is thus  $\mathbf{v} = (3, 4, 4, 4, \dots, 4, 3, 2)^t$  and  $B$  is of order  $n$ .

Note that if  $f$  denotes the form fixed by  $A$  and  $B$  then in the basis of Proposition 2.10,  $f_{ij}$  is 3 if  $|i - j| = 1$ , and so Lemma 4.1 implies that the basis vectors are in one connected component of  $X_f$  since  $e_i^t f e_{i+1} = 3$  for all  $1 \leq i \leq n - 1$ . To see this, we note that the  $n$ th entry of  $B\mathbf{v}$  is 3.

(8) The basic idea is to use Lemma 4.6 again; however, to show that  $v$  and  $Bv$  belong to the same connected component is more complicated than in the previous cases (one has to consider paths of greater length). Recall that for every  $n \geq 7$  with  $\gcd(n + 1, 6) = 2$  there exists a unique monodromy group  $H$  in the family  $\mathcal{N}_1(3, n, n)$ . For  $1 \leq i \leq n$  let  $v_i := B^{i-1}v$  be the  $i$ th basis element of a basis for  $L$ . If  $u \in L$  then  $[u]$  denotes the coordinate vector of  $u$  with respect to the base  $v_1, \dots, v_n$  and  $[u]_i$  is the  $i$ th coordinate of  $[u]$ . Corollary 2.12 states that the quadratic form is given by

$$f_{ij} := (v_i, v_j) = \begin{cases} -2 & \text{if } |i - j| = 0, \\ -4 & \text{if } |i - j| = 1, \\ -8 & \text{if } |i - j| = 2 \text{ or } |i - j| = n - 1, \\ -11 & \text{if } |i - j| = 3 \text{ or } |i - j| = n - 2, \\ -12 & \text{otherwise.} \end{cases}$$

**Lemma 4.8.** Denote  $m := n - 3$  if  $n \equiv 1 \pmod{6}$  and  $m := n - 5$  if  $n \equiv 3 \pmod{6}$ . Define  $u \in L$  by

$$[u]_i := \begin{cases} 1 & \text{if } i \equiv 1 \pmod{6} \text{ and } i \leq m, \\ -2 & \text{if } i \equiv 2 \pmod{6} \text{ and } i \leq m, \\ 2 & \text{if } i \equiv 3 \pmod{6} \text{ and } i \leq m, \\ -1 & \text{if } i \equiv 4 \pmod{6} \text{ and } i \leq m, \\ 0 & \text{otherwise.} \end{cases}$$

Then  $(u, u) = 2$ .

*Proof.* The proof is by induction on  $\lfloor n/6 \rfloor$  (the integral part of  $n/6$ ). The induction base is  $n = 7$  and  $n = 9$ , and it is a direct computation. Assume  $n \geq 10$  and that the induction

hypothesis was proven for integers smaller than  $l := \lfloor n/6 \rfloor$ . Define  $a, b \in L$  by

$$[a]_i := \begin{cases} 1 & \text{if } i \equiv 1 \pmod{6} \text{ and } i \leq m-6, \\ -2 & \text{if } i \equiv 2 \pmod{6} \text{ and } i \leq m-6, \\ 2 & \text{if } i \equiv 3 \pmod{6} \text{ and } i \leq m-6, \\ -1 & \text{if } i \equiv 4 \pmod{6} \text{ and } i \leq m-6, \\ 0 & \text{otherwise,} \end{cases} \quad [b]_i := \begin{cases} 1 & \text{if } i = m-3, \\ -2 & \text{if } i = m-2, \\ 2 & \text{if } i = m-1, \\ -1 & \text{if } i = m, \\ 0 & \text{otherwise.} \end{cases}$$

Note that if  $\tilde{f}$  is the form corresponding to the  $(n-6)$ -dimensional group in the family  $j = 3$  then the upper left  $m-6 \times m-6$  of  $\tilde{f}$  is the same as the upper left  $m-6 \times m-6$  of  $F$ . Thus, by the induction hypothesis we know that  $(a, a) = 2$  and  $(b, b) = (B^{-6(l-1)}b, B^{-6(l-1)}b) = 2$ . The equality  $u = a + b$  implies

$$(u, u) = (a, a) + (b, b) + 2(b, a) = 4 + \sum_{i=m-3}^m \sum_{j=1}^{m-6} [u]_i [u]_j f_{ij} = 2$$

since  $f_{m-6, m-3} = f_{m-3, m-6} = -11$  while all the other  $f_{ij}$  in the above range equal  $-12$ . □

**Lemma 4.9.** Assume that  $n \equiv 1 \pmod{6}$  and let  $u$  and  $m$  be as in Lemma 4.8. Denote  $w := u + v_{n-1}$ . Then  $(w, w) = -2$  while  $(w, v_{n-1}) = (w, v_n) = -3$ .

*Proof.* Note that  $f_{n-1,1} = -11$ ,  $f_{n-1, m-1} = -11$  and  $f_{n-1, m} = -8$  while  $f_{n-1, i} = -12$  for  $2 \leq i \leq m-2$ . Thus,

$$\begin{aligned} (u, v_{n-1}) &= \sum_{i=1}^m [u_i] f_{n-1, i} = -1, \\ (w, w) &= (u, u) + (v_{n-1}, v_{n-1}) + 2(v_{n-1}, u) = 2 - 2 - 2 = -2, \\ (w, v_{n-1}) &= (v_{n-1}, v_{n-1}) + (v_{n-1}, u) = -1 - 2 = -3. \end{aligned}$$

Also,  $f_{n1} = -8$ ,  $f_{n2} = -11$  and  $f_{nm} = -11$  while  $f_{n-1, i} = -12$  for  $3 \leq i \leq m-1$ . Thus,

$$\begin{aligned} (u, v_n) &= \sum_{i=1}^m [u_i] f_{ni} = 1, \\ (w, v_n) &= (v_n, v_{n-1}) + (v_{n-1}, u) = -4 + 1 = -3. \end{aligned} \quad \square$$

**Lemma 4.10.** Assume  $n \equiv 5 \pmod{6}$  and let  $u$  and  $m$  be as in Lemma 4.8. Denote  $w := u + v_{n-2}$ . Then  $(w, w) = -2$  while  $(w, v_{n-2}) = (w, v_{n-1}) = -3$ .

*Proof.* Note that  $f_{n-2, m} = -11$ , while  $f_{n-2, i} = -12$  for  $1 \leq i \leq m-1$ . Thus,

$$\begin{aligned} (u, v_{n-2}) &= \sum_{i=1}^m [u_i] f_{n-2, i} = -1, \\ (w, w) &= (u, u) + (v_{n-2}, v_{n-2}) + 2(v_{n-2}, u) = 2 - 2 - 2 = -2, \\ (w, v_{n-2}) &= (v_{n-2}, v_{n-2}) + (v_{n-2}, u) = -1 - 2 = -3. \end{aligned}$$

Also,  $f_{n-1,1} = -11$  while  $f_{n-1,i} = -12$  for  $2 \leq i \leq m$ . Thus,

$$(u, v_{n-1}) = \sum_{i=1}^m [u_i] f_{n-1,i} = 1,$$

$$(w, v_{n-1}) = (v_{n-1}, v_{n-2}) + (v_{n-2}, u) = -4 + 1 = -3. \quad \square$$

Lemmas 4.9 and 4.10 show that  $v_{n-2}$  and  $v_{n-1}$  are in the same connected component of  $X_f$ . Thus, also  $v = B^{3-n}v_{n-2}$  and  $Bv = B^{3-n}v_{n-1}$  are in the same connected component and we can apply Lemma 4.6.  $\square$

By using the same kind of argument one can show that more families are thin. However since the computations are very tedious, we will only state the result we were able to prove.

**Theorem 4.11.** *The family  $\mathcal{N}_1(j, n, n)$  where  $n \equiv l \pmod{2j}$  is thin if one of the following conditions holds:*

1.  $l = j$  or  $l = j - 2$ .
2.  $l \leq (j + 1)/2$  and  $l + 1$  divides  $j - 1$ .
3.  $l \geq (2j - 5)/2$  and  $2j - l - 1$  divides  $j - 1$ .

It is possible that one might be able to remove the congruence conditions above. For example, the first case which is not covered by the theorem above is  $\mathcal{N}_1(7, 17, 17)$ , in which there is a path of length 4 in  $X_f$  that connects  $v$  and  $Bv$  (and hence the group is thin).

## 5. Numerical results and data

### 5.1. Hyperbolic groups $H(\alpha, \beta)$ , dimension $n \leq 9$

In this section, we list all of the primitive hyperbolic hypergeometric monodromy groups, including the sporadic ones which do not fall into any of the families found in Section 2.3. We note that the sporadic groups are all in dimension  $n \leq 9$  and are easily determined using the method from Section 2.2, given the sporadic finite hypergeometric monodromy groups listed in [B-H] (or by listing for each  $n$  all the hyperbolic hypergeometric  $(\alpha, \beta)$ 's and recording which lie in one of our seven families). Our list is split into two tables: Table 2, which lists all even monodromy groups in dimension  $n \leq 9$  as well as which family (if any) they fit into, and Table 3, which lists all odd monodromy groups in dimension  $n \leq 9$  along with the associated family. In Table 2, we also list the invariant factors of the associated quadratic lattice and specify in which cases we are able to prove that the monodromy group is thin (thinness here is always confirmed using the minimal distance graph method described above, with the longest path encountered being of length 3). In Table 3 we specify when the subgroup  $H_r$  of  $H(\alpha, \beta)$  is contained in  $R_f$ —note that Nikulin's results from [N1] do not apply to the odd case and hence we cannot immediately deduce thinness in these lower dimensional odd cases (although with extra work this can probably be done). The groups  $H(\alpha, \beta)$  where  $[H(\alpha, \beta) : H_r] = \infty$  (thus, those for which the minimal distance graph method does not prove thinness) are marked with a \* in the last column.



**Table 2.** Even monodromy groups: dimensions 3, 5, 7, 9.

$(\alpha, \beta)$	$(\alpha, \beta)$ with shift by $1/2$	Factors	Family	Thin
$\alpha = (\frac{1}{2}, \frac{1}{2}, \frac{1}{2})$ $\beta = (0, 0, 0)$	$\alpha = (0, 0, 0)$ $\beta = (\frac{1}{2}, \frac{1}{2}, \frac{1}{2})$	8	$\mathcal{N}_4(1, 1, 3)$	No
$\alpha = (\frac{1}{3}, \frac{1}{2}, \frac{2}{3})$ $\beta = (0, 0, 0)$	$\alpha = (0, \frac{1}{6}, \frac{5}{6})$ $\beta = (\frac{1}{2}, \frac{1}{2}, \frac{1}{2})$	24, 72	$\mathcal{N}_3(1, 2, 3)$	No
$\alpha = (\frac{1}{4}, \frac{1}{2}, \frac{3}{4})$ $\beta = (0, 0, 0)$	$\alpha = (0, \frac{1}{4}, \frac{3}{4})$ $\beta = (\frac{1}{2}, \frac{1}{2}, \frac{1}{2})$	8, 8	$\mathcal{N}_3(1, 1, 3)$	No
$\alpha = (\frac{1}{6}, \frac{1}{2}, \frac{5}{6})$ $\beta = (0, 0, 0)$	$\alpha = (0, \frac{1}{3}, \frac{2}{3})$ $\beta = (\frac{1}{2}, \frac{1}{2}, \frac{1}{2})$	8, 8	$\mathcal{N}_2(1, 2, 3)$	No
$\alpha = (\frac{1}{3}, \frac{1}{2}, \frac{2}{3})$ $\beta = (0, \frac{1}{4}, \frac{3}{4})$	$\alpha = (0, \frac{1}{6}, \frac{5}{6})$ $\beta = (\frac{1}{4}, \frac{1}{2}, \frac{3}{4})$	12, 12	$\mathcal{N}_1(1, 1, 3)$	No
$\alpha = (\frac{1}{3}, \frac{1}{2}, \frac{2}{3})$ $\beta = (0, \frac{1}{6}, \frac{5}{6})$	$\alpha = (0, \frac{1}{6}, \frac{5}{6})$ $\beta = (\frac{1}{3}, \frac{1}{2}, \frac{2}{3})$	3	$\mathcal{N}_2(1, 1, 3)$	No
$\alpha = (0, \frac{1}{10}, \frac{3}{10}, \frac{7}{10}, \frac{9}{10})$ $\beta = (\frac{1}{8}, \frac{3}{8}, \frac{2}{8}, \frac{5}{8}, \frac{7}{8})$	$\alpha = (\frac{1}{5}, \frac{2}{5}, \frac{3}{5}, \frac{4}{5})$ $\beta = (0, \frac{1}{8}, \frac{3}{8}, \frac{5}{8}, \frac{7}{8})$	20	$\mathcal{M}_1(1, 5)$	Yes
$\alpha = (0, \frac{1}{10}, \frac{7}{10}, \frac{9}{10}, \frac{9}{10})$ $\beta = (\frac{1}{4}, \frac{1}{3}, \frac{2}{3}, \frac{3}{4})$	$\alpha = (\frac{1}{5}, \frac{2}{5}, \frac{3}{5}, \frac{4}{5})$ $\beta = (0, \frac{1}{6}, \frac{4}{6}, \frac{5}{6})$	60	$\mathcal{M}_1(3, 5)$	Yes
$\alpha = (0, \frac{1}{6}, \frac{1}{3}, \frac{2}{3}, \frac{5}{6})$ $\beta = (\frac{1}{5}, \frac{2}{5}, \frac{3}{5}, \frac{4}{5})$	$\alpha = (\frac{1}{6}, \frac{1}{3}, \frac{2}{3}, \frac{5}{6})$ $\beta = (0, \frac{1}{10}, \frac{3}{10}, \frac{7}{10}, \frac{9}{10})$	30	$\mathcal{N}_1(1, 5, 5)$	Yes <sup>6</sup>

<sup>6</sup> In his recent thesis, Y. Park [P] shows that this  $H(\alpha, \beta)$  is geometrically finite and determines a presentation for it.

$\alpha = (\frac{1}{8}, \frac{3}{8}, \frac{1}{2}, \frac{5}{8}, \frac{7}{8})$ $\beta = (0, 0, 0, \frac{1}{6}, \frac{5}{6})$	$\alpha = (0, \frac{1}{8}, \frac{3}{8}, \frac{5}{8}, \frac{7}{8})$ $\beta = (\frac{1}{3}, \frac{1}{2}, \frac{1}{2}, \frac{1}{2}, \frac{2}{3})$	2, 2, 48	$\mathcal{M}_2(1, 5)$	?
$\alpha = (\frac{1}{8}, \frac{3}{8}, \frac{1}{2}, \frac{5}{8}, \frac{7}{8})$ $\beta = (0, 0, 0, \frac{1}{3}, \frac{2}{3})$	$\alpha = (0, \frac{1}{8}, \frac{3}{8}, \frac{5}{8}, \frac{7}{8})$ $\beta = (\frac{1}{6}, \frac{1}{2}, \frac{1}{2}, \frac{2}{3}, \frac{5}{6})$	2, 2, 16	$\mathcal{M}_2(3, 5)$	Yes
$\alpha = (0, \frac{1}{6}, \frac{1}{3}, \frac{2}{3}, \frac{5}{6})$ $\beta = (\frac{1}{4}, \frac{1}{2}, \frac{2}{2}, \frac{2}{2}, \frac{3}{4})$	$\alpha = (\frac{1}{6}, \frac{1}{3}, \frac{1}{2}, \frac{2}{3}, \frac{5}{6})$ $\beta = (0, 0, 0, \frac{1}{4}, \frac{3}{4})$	3, 144	$\mathcal{N}_2(1, 2, 5),$ $\mathcal{N}_3(1, 2, 5)$	?
$\alpha = (0, \frac{1}{5}, \frac{2}{5}, \frac{3}{5}, \frac{4}{5})$ $\beta = (\frac{1}{4}, \frac{1}{2}, \frac{2}{2}, \frac{2}{2}, \frac{3}{4})$	$\alpha = (\frac{1}{10}, \frac{3}{10}, \frac{1}{2}, \frac{7}{10}, \frac{9}{10})$ $\beta = (0, 0, 0, \frac{1}{4}, \frac{3}{4})$	16	$\mathcal{N}_2(1, 4, 5)$	Yes
$\alpha = (0, \frac{1}{5}, \frac{2}{5}, \frac{3}{5}, \frac{4}{5})$ $\beta = (\frac{1}{3}, \frac{1}{2}, \frac{2}{2}, \frac{2}{2}, \frac{3}{3})$	$\alpha = (\frac{1}{10}, \frac{3}{10}, \frac{1}{2}, \frac{7}{10}, \frac{9}{10})$ $\beta = (0, 0, 0, \frac{1}{6}, \frac{5}{6})$	24	$\mathcal{N}_2(2, 4, 5)$	Yes
$\alpha = (\frac{1}{5}, \frac{2}{5}, \frac{1}{3}, \frac{3}{5}, \frac{4}{5})$ $\beta = (0, 0, 0, \frac{1}{4}, \frac{3}{4})$	$\alpha = (0, \frac{1}{10}, \frac{3}{10}, \frac{7}{10}, \frac{9}{10})$ $\beta = (\frac{1}{4}, \frac{1}{2}, \frac{2}{2}, \frac{2}{2}, \frac{3}{4})$	5, 5, 80	$\mathcal{N}_3(1, 4, 5)$	?
$\alpha = (\frac{1}{5}, \frac{2}{5}, \frac{1}{3}, \frac{3}{5}, \frac{4}{5})$ $\beta = (0, 0, 0, \frac{1}{3}, \frac{2}{3})$	$\alpha = (0, \frac{1}{10}, \frac{3}{10}, \frac{7}{10}, \frac{9}{10})$ $\beta = (\frac{1}{6}, \frac{1}{2}, \frac{2}{2}, \frac{2}{2}, \frac{5}{6})$	5, 5, 40	$\mathcal{N}_3(2, 4, 5)$	?
$\alpha = (\frac{1}{6}, \frac{1}{2}, \frac{1}{2}, \frac{1}{2}, \frac{5}{6})$ $\beta = (0, 0, 0, \frac{1}{4}, \frac{3}{4})$	$\alpha = (0, 0, 0, \frac{1}{3}, \frac{2}{3})$ $\beta = (\frac{1}{4}, \frac{1}{2}, \frac{2}{2}, \frac{2}{2}, \frac{3}{4})$	4, 32, 32	$\mathcal{M}_3(1, 5),$ $\mathcal{N}_4(1, 3, 5)$	?*
$\alpha = (\frac{1}{2}, \frac{1}{2}, \frac{5}{12}, \frac{7}{12}, \frac{11}{12})$ $\beta = (0, 0, 0, \frac{1}{3}, \frac{2}{3})$	$\alpha = (0, \frac{1}{12}, \frac{5}{12}, \frac{7}{12}, \frac{11}{12})$ $\beta = (\frac{1}{6}, \frac{1}{2}, \frac{2}{2}, \frac{2}{2}, \frac{5}{6})$	2, 2, 8	Sporadic	Yes
$\alpha = (0, \frac{1}{12}, \frac{5}{12}, \frac{7}{12}, \frac{11}{12})$ $\beta = (\frac{1}{3}, \frac{1}{2}, \frac{2}{2}, \frac{2}{2}, \frac{3}{3})$	$\alpha = (\frac{1}{12}, \frac{5}{12}, \frac{1}{2}, \frac{7}{12}, \frac{11}{12})$ $\beta = (0, 0, 0, \frac{1}{6}, \frac{5}{6})$	2, 2, 24	Sporadic	?

$\alpha = (\frac{1}{12}, \frac{5}{12}, \frac{1}{2}, \frac{7}{12}, \frac{11}{12})$ $\beta = (0, 0, 0, \frac{1}{4}, \frac{3}{4})$	$\alpha = (0, \frac{1}{12}, \frac{5}{12}, \frac{1}{2}, \frac{7}{12}, \frac{11}{12})$ $\beta = (\frac{1}{4}, \frac{1}{2}, \frac{2}{2}, \frac{3}{4})$	3, 48	Sporadic	?
$\alpha = (0, \frac{1}{14}, \frac{3}{14}, \frac{5}{14}, \frac{9}{14}, \frac{11}{14}, \frac{13}{14})$ $\beta = (\frac{1}{12}, \frac{1}{4}, \frac{1}{12}, \frac{2}{2}, \frac{7}{12}, \frac{4}{4}, \frac{11}{12})$	$\alpha = (\frac{1}{7}, \frac{2}{7}, \frac{3}{7}, \frac{1}{2}, \frac{4}{7}, \frac{5}{7}, \frac{6}{7})$ $\beta = (0, \frac{1}{12}, \frac{1}{4}, \frac{1}{12}, \frac{2}{2}, \frac{7}{12}, \frac{4}{4}, \frac{11}{12})$	28	$\mathcal{M}_1(1, 7)$	Yes
$\alpha = (0, \frac{1}{14}, \frac{3}{14}, \frac{5}{14}, \frac{9}{14}, \frac{11}{14}, \frac{13}{14})$ $\beta = (\frac{1}{8}, \frac{3}{8}, \frac{1}{2}, \frac{5}{8}, \frac{3}{8})$	$\alpha = (\frac{1}{7}, \frac{2}{7}, \frac{3}{7}, \frac{1}{2}, \frac{4}{7}, \frac{5}{7}, \frac{6}{7})$ $\beta = (0, \frac{1}{8}, \frac{3}{8}, \frac{1}{2}, \frac{5}{8}, \frac{3}{8})$	84	$\mathcal{M}_1(3, 7)$	Yes
$\alpha = (0, \frac{1}{14}, \frac{3}{14}, \frac{5}{14}, \frac{9}{14}, \frac{11}{14}, \frac{13}{14})$ $\beta = (\frac{1}{5}, \frac{1}{4}, \frac{2}{5}, \frac{3}{5}, \frac{4}{5})$	$\alpha = (\frac{1}{7}, \frac{2}{7}, \frac{3}{7}, \frac{1}{2}, \frac{4}{7}, \frac{5}{7}, \frac{6}{7})$ $\beta = (0, \frac{1}{10}, \frac{1}{4}, \frac{1}{10}, \frac{3}{10}, \frac{9}{10})$	140	$\mathcal{M}_1(5, 7)$	Yes
$\alpha = (0, \frac{1}{8}, \frac{1}{4}, \frac{3}{8}, \frac{5}{8}, \frac{7}{8})$ $\beta = (\frac{1}{7}, \frac{2}{7}, \frac{3}{7}, \frac{1}{2}, \frac{4}{7}, \frac{5}{7}, \frac{6}{7})$	$\alpha = (\frac{1}{8}, \frac{1}{4}, \frac{3}{8}, \frac{5}{8}, \frac{7}{8})$ $\beta = (0, \frac{1}{14}, \frac{1}{14}, \frac{1}{4}, \frac{14}{14}, \frac{13}{14})$	56	$\mathcal{N}_1(1, 7, 7)$	Yes
$\alpha = (0, \frac{1}{8}, \frac{1}{4}, \frac{3}{8}, \frac{5}{8}, \frac{7}{8})$ $\beta = (\frac{1}{5}, \frac{3}{5}, \frac{2}{5}, \frac{3}{5}, \frac{4}{5})$	$\alpha = (\frac{1}{8}, \frac{1}{4}, \frac{3}{8}, \frac{5}{8}, \frac{7}{8})$ $\beta = (0, \frac{1}{10}, \frac{1}{6}, \frac{1}{10}, \frac{5}{10}, \frac{9}{10})$	120	$\mathcal{N}_1(3, 7, 7)$	Yes
$\alpha = (\frac{1}{12}, \frac{1}{4}, \frac{1}{12}, \frac{2}{2}, \frac{7}{12}, \frac{4}{4}, \frac{11}{12})$ $\beta = (0, 0, 0, \frac{1}{10}, \frac{3}{10}, \frac{7}{10}, \frac{9}{10})$	$\alpha = (0, \frac{1}{12}, \frac{1}{4}, \frac{1}{12}, \frac{2}{2}, \frac{7}{12}, \frac{4}{4}, \frac{11}{12})$ $\beta = (\frac{1}{5}, \frac{2}{5}, \frac{1}{1}, \frac{1}{1}, \frac{3}{4}, \frac{4}{5})$	2, 2, 80	$\mathcal{M}_2(1, 7)$	?
$\alpha = (\frac{1}{12}, \frac{1}{4}, \frac{1}{12}, \frac{2}{2}, \frac{7}{12}, \frac{4}{4}, \frac{11}{12})$ $\beta = (0, 0, 0, \frac{1}{8}, \frac{3}{8}, \frac{5}{8}, \frac{7}{8})$	$\alpha = (0, \frac{1}{12}, \frac{1}{4}, \frac{1}{12}, \frac{2}{2}, \frac{7}{12}, \frac{4}{4}, \frac{11}{12})$ $\beta = (\frac{1}{8}, \frac{3}{8}, \frac{5}{8}, \frac{7}{8}, \frac{2}{2}, \frac{2}{2}, \frac{8}{8})$	4, 4, 32	$\mathcal{M}_2(2, 7)$	?
$\alpha = (\frac{1}{12}, \frac{1}{4}, \frac{1}{12}, \frac{2}{2}, \frac{7}{12}, \frac{4}{4}, \frac{11}{12})$ $\beta = (0, 0, 0, \frac{1}{5}, \frac{3}{5}, \frac{4}{5})$	$\alpha = (0, \frac{1}{12}, \frac{1}{4}, \frac{1}{12}, \frac{2}{2}, \frac{7}{12}, \frac{4}{4}, \frac{11}{12})$ $\beta = (\frac{1}{10}, \frac{3}{10}, \frac{1}{1}, \frac{1}{1}, \frac{7}{10}, \frac{9}{10})$	2, 2, 16	$\mathcal{M}_2(5, 7)$	Yes
$\alpha = (0, \frac{1}{9}, \frac{4}{9}, \frac{5}{9}, \frac{7}{9}, \frac{8}{9})$ $\beta = (\frac{1}{6}, \frac{1}{3}, \frac{2}{2}, \frac{2}{2}, \frac{5}{6}, \frac{5}{6})$	$\alpha = (\frac{1}{18}, \frac{5}{18}, \frac{7}{18}, \frac{2}{18}, \frac{11}{18}, \frac{13}{18}, \frac{17}{18})$ $\beta = (0, 0, 0, \frac{1}{6}, \frac{1}{3}, \frac{5}{6}, \frac{5}{6})$	3, 72	$\mathcal{N}_2(1, 2, 7)$	?

$\alpha = (0, \frac{1}{8}, \frac{1}{4}, \frac{3}{8}, \frac{5}{8}, \frac{3}{4}, \frac{7}{8})$ $\beta = (\frac{1}{6}, \frac{1}{3}, \frac{1}{2}, \frac{2}{3}, \frac{5}{6})$	$\alpha = (\frac{1}{8}, \frac{1}{4}, \frac{3}{8}, \frac{5}{8}, \frac{3}{4}, \frac{7}{8})$ $\beta = (0, 0, 0, \frac{1}{6}, \frac{1}{3}, \frac{5}{6})$	4, 4, 96	$\mathcal{N}_2(1, 3, 7),$ $\mathcal{N}_3(1, 3, 7)$	?
$\alpha = (0, \frac{1}{7}, \frac{2}{7}, \frac{4}{7}, \frac{5}{7}, \frac{6}{7})$ $\beta = (\frac{1}{6}, \frac{1}{3}, \frac{2}{2}, \frac{2}{2}, \frac{5}{3}, \frac{6}{6})$	$\alpha = (\frac{1}{14}, \frac{3}{14}, \frac{5}{14}, \frac{1}{2}, \frac{9}{14}, \frac{11}{14}, \frac{13}{14})$ $\beta = (0, 0, 0, \frac{1}{6}, \frac{1}{3}, \frac{5}{6})$	24	$\mathcal{N}_2(1, 6, 7)$	Yes
$\alpha = (0, \frac{1}{7}, \frac{2}{7}, \frac{4}{7}, \frac{5}{7}, \frac{6}{7})$ $\beta = (\frac{1}{5}, \frac{2}{5}, \frac{2}{2}, \frac{2}{2}, \frac{3}{5}, \frac{4}{5})$	$\alpha = (\frac{1}{14}, \frac{3}{14}, \frac{5}{14}, \frac{1}{2}, \frac{9}{14}, \frac{11}{14}, \frac{13}{14})$ $\beta = (0, 0, 0, \frac{1}{10}, \frac{3}{10}, \frac{7}{10}, \frac{9}{10})$	40	$\mathcal{N}_2(2, 6, 7)$	Yes
$\alpha = (0, \frac{1}{7}, \frac{2}{7}, \frac{4}{7}, \frac{5}{7}, \frac{6}{7})$ $\beta = (\frac{1}{4}, \frac{1}{3}, \frac{2}{2}, \frac{2}{2}, \frac{3}{3}, \frac{4}{4})$	$\alpha = (\frac{1}{14}, \frac{3}{14}, \frac{5}{14}, \frac{1}{2}, \frac{9}{14}, \frac{11}{14}, \frac{13}{14})$ $\beta = (0, 0, 0, \frac{1}{6}, \frac{1}{4}, \frac{5}{6})$	48	$\mathcal{N}_2(3, 6, 7)$	Yes
$\alpha = (\frac{1}{9}, \frac{2}{9}, \frac{4}{9}, \frac{5}{9}, \frac{7}{9}, \frac{8}{9})$ $\beta = (0, 0, 0, \frac{1}{6}, \frac{1}{3}, \frac{5}{6})$	$\alpha = (0, \frac{1}{18}, \frac{5}{18}, \frac{7}{18}, \frac{11}{18}, \frac{13}{18}, \frac{17}{18})$ $\beta = (\frac{1}{6}, \frac{1}{3}, \frac{2}{2}, \frac{2}{2}, \frac{3}{3}, \frac{5}{6})$	3, 3, 3, 3, 3, 24	$\mathcal{N}_3(1, 2, 7)$	?
$\alpha = (\frac{1}{7}, \frac{2}{7}, \frac{3}{7}, \frac{1}{2}, \frac{5}{7}, \frac{6}{7})$ $\beta = (0, 0, 0, \frac{1}{6}, \frac{1}{3}, \frac{5}{6})$	$\alpha = (0, \frac{1}{14}, \frac{3}{14}, \frac{5}{14}, \frac{9}{14}, \frac{11}{14}, \frac{13}{14})$ $\beta = (\frac{1}{6}, \frac{1}{3}, \frac{2}{2}, \frac{2}{2}, \frac{5}{3}, \frac{6}{6})$	7, 7, 168	$\mathcal{N}_3(1, 6, 7)$	?
$\alpha = (\frac{1}{7}, \frac{2}{7}, \frac{3}{7}, \frac{1}{2}, \frac{5}{7}, \frac{6}{7})$ $\beta = (0, 0, 0, \frac{1}{5}, \frac{2}{5}, \frac{4}{5})$	$\alpha = (0, \frac{1}{14}, \frac{3}{14}, \frac{5}{14}, \frac{9}{14}, \frac{11}{14}, \frac{13}{14})$ $\beta = (\frac{1}{10}, \frac{1}{10}, \frac{1}{2}, \frac{2}{2}, \frac{7}{10}, \frac{9}{10})$	7, 7, 56	$\mathcal{N}_3(2, 6, 7)$	?
$\alpha = (\frac{1}{10}, \frac{2}{10}, \frac{3}{10}, \frac{1}{2}, \frac{7}{10}, \frac{9}{10})$ $\beta = (0, 0, 0, \frac{1}{8}, \frac{5}{8}, \frac{7}{8})$	$\alpha = (0, \frac{1}{14}, \frac{3}{14}, \frac{5}{14}, \frac{9}{14}, \frac{11}{14}, \frac{13}{14})$ $\beta = (\frac{1}{6}, \frac{1}{4}, \frac{2}{2}, \frac{2}{2}, \frac{3}{4}, \frac{5}{6})$	7, 7, 112	$\mathcal{N}_3(3, 6, 7)$	?
$\alpha = (\frac{1}{10}, \frac{2}{10}, \frac{3}{10}, \frac{1}{2}, \frac{7}{10}, \frac{9}{10})$ $\beta = (0, 0, 0, \frac{1}{8}, \frac{5}{8}, \frac{7}{8})$	$\alpha = (0, 0, 0, \frac{1}{5}, \frac{2}{5}, \frac{3}{5})$ $\beta = (\frac{1}{8}, \frac{3}{8}, \frac{2}{2}, \frac{2}{2}, \frac{5}{8}, \frac{7}{8})$	4, 32, 32	$\mathcal{M}_3(1, 7)$	?*
$\alpha = (\frac{1}{10}, \frac{2}{10}, \frac{3}{10}, \frac{1}{2}, \frac{7}{10}, \frac{9}{10})$ $\beta = (0, 0, 0, \frac{1}{4}, \frac{3}{4}, \frac{5}{4})$	$\alpha = (0, 0, 0, \frac{1}{5}, \frac{2}{5}, \frac{3}{5})$ $\beta = (\frac{1}{6}, \frac{1}{4}, \frac{2}{2}, \frac{2}{2}, \frac{3}{4}, \frac{5}{6})$	4, 32, 32	$\mathcal{M}_3(3, 7)$	?*

$\alpha = (\frac{1}{6}, \frac{1}{3}, \frac{1}{2}, \frac{1}{2}, \frac{1}{3}, \frac{5}{6})$ $\beta = (0, 0, 0, \frac{1}{5}, \frac{2}{5}, \frac{4}{5})$	$\alpha = (0, 0, 0, \frac{1}{6}, \frac{1}{3}, \frac{5}{6})$ $\beta = (\frac{1}{10}, \frac{3}{10}, \frac{1}{2}, \frac{1}{2}, \frac{7}{10}, \frac{9}{10})$	2, 48, 144	$\mathcal{N}_4(1, 5, 7)$	?
$\alpha = (\frac{1}{12}, \frac{1}{3}, \frac{1}{2}, \frac{1}{2}, \frac{7}{12}, \frac{11}{12})$ $\beta = (0, 0, 0, \frac{1}{8}, \frac{3}{8}, \frac{7}{8})$	$\alpha = (0, \frac{1}{12}, \frac{1}{6}, \frac{1}{2}, \frac{7}{6}, \frac{11}{6})$ $\beta = (\frac{1}{8}, \frac{3}{8}, \frac{1}{2}, \frac{1}{2}, \frac{5}{8}, \frac{7}{8})$	3, 144	Sporadic	?
$\alpha = (\frac{1}{12}, \frac{1}{5}, \frac{1}{2}, \frac{7}{12}, \frac{2}{3}, \frac{11}{12})$ $\beta = (0, 0, 0, \frac{1}{5}, \frac{3}{5}, \frac{4}{5})$	$\alpha = (0, \frac{1}{12}, \frac{1}{6}, \frac{1}{2}, \frac{7}{6}, \frac{11}{6})$ $\beta = (\frac{1}{10}, \frac{3}{10}, \frac{1}{2}, \frac{1}{2}, \frac{7}{10}, \frac{9}{10})$	3, 72	Sporadic	?
$\alpha = (\frac{1}{2}, \frac{4}{9}, \frac{1}{3}, \frac{5}{9}, \frac{7}{9}, \frac{8}{9})$ $\beta = (0, 0, 0, \frac{1}{6}, \frac{1}{4}, \frac{5}{6})$	$\alpha = (0, \frac{1}{18}, \frac{1}{8}, \frac{1}{8}, \frac{13}{18}, \frac{17}{18})$ $\beta = (\frac{1}{4}, \frac{1}{3}, \frac{1}{2}, \frac{2}{2}, \frac{3}{4}, \frac{3}{4})$	3, 3, 3, 48	Sporadic	?
$\alpha = (\frac{1}{9}, \frac{2}{9}, \frac{1}{3}, \frac{5}{9}, \frac{7}{9}, \frac{8}{9})$ $\beta = (0, 0, 0, \frac{1}{8}, \frac{3}{8}, \frac{5}{8})$	$\alpha = (0, \frac{1}{18}, \frac{1}{8}, \frac{1}{8}, \frac{13}{18}, \frac{17}{18})$ $\beta = (\frac{1}{8}, \frac{1}{8}, \frac{1}{2}, \frac{2}{2}, \frac{7}{8}, \frac{8}{8})$	3, 3, 48	Sporadic	?
$\alpha = (\frac{1}{2}, \frac{4}{9}, \frac{1}{3}, \frac{5}{9}, \frac{7}{9}, \frac{8}{9})$ $\beta = (0, 0, 0, \frac{1}{2}, \frac{3}{5}, \frac{4}{5})$	$\alpha = (0, \frac{1}{18}, \frac{1}{8}, \frac{1}{8}, \frac{13}{18}, \frac{17}{18})$ $\beta = (\frac{1}{10}, \frac{1}{10}, \frac{1}{2}, \frac{1}{2}, \frac{7}{10}, \frac{9}{10})$	3, 3, 24	Sporadic	Yes
$\alpha = (\frac{1}{18}, \frac{1}{8}, \frac{1}{8}, \frac{13}{18}, \frac{17}{18})$ $\beta = (\frac{1}{12}, \frac{1}{3}, \frac{1}{2}, \frac{7}{12}, \frac{2}{3}, \frac{11}{12})$	$\alpha = (\frac{1}{9}, \frac{2}{9}, \frac{1}{3}, \frac{5}{9}, \frac{7}{9}, \frac{8}{9})$ $\beta = (0, \frac{1}{12}, \frac{1}{6}, \frac{1}{2}, \frac{7}{6}, \frac{11}{6})$	2, 3, 3	Sporadic	Yes
$\alpha = (0, \frac{1}{18}, \frac{1}{8}, \frac{1}{8}, \frac{13}{18}, \frac{17}{18})$ $\beta = (\frac{1}{5}, \frac{1}{3}, \frac{1}{2}, \frac{2}{3}, \frac{3}{5}, \frac{4}{5})$	$\alpha = (\frac{1}{9}, \frac{2}{9}, \frac{1}{3}, \frac{5}{9}, \frac{7}{9}, \frac{8}{9})$ $\beta = (0, \frac{1}{10}, \frac{1}{6}, \frac{1}{2}, \frac{7}{6}, \frac{11}{6})$	3, 30	Sporadic	Yes
$\alpha = (0, \frac{1}{18}, \frac{1}{8}, \frac{1}{8}, \frac{13}{18}, \frac{17}{18})$ $\beta = (\frac{1}{7}, \frac{2}{7}, \frac{1}{4}, \frac{5}{7}, \frac{6}{7})$	$\alpha = (\frac{1}{9}, \frac{2}{9}, \frac{1}{3}, \frac{5}{9}, \frac{7}{9}, \frac{8}{9})$ $\beta = (0, \frac{1}{14}, \frac{1}{4}, \frac{1}{4}, \frac{13}{14}, \frac{13}{14})$	42	Sporadic	Yes
$\alpha = (0, \frac{1}{14}, \frac{1}{4}, \frac{5}{14}, \frac{11}{14}, \frac{13}{14})$ $\beta = (\frac{1}{12}, \frac{1}{3}, \frac{1}{2}, \frac{7}{12}, \frac{2}{3}, \frac{11}{12})$	$\alpha = (\frac{1}{7}, \frac{2}{7}, \frac{1}{4}, \frac{5}{7}, \frac{6}{7})$ $\beta = (0, \frac{1}{12}, \frac{1}{6}, \frac{1}{2}, \frac{7}{6}, \frac{11}{6})$	42	Sporadic	Yes

$\alpha = (0, \frac{1}{14}, \frac{3}{14}, \frac{5}{14}, \frac{9}{14}, \frac{11}{14}, \frac{13}{14})$ $\beta = (\frac{1}{5}, \frac{1}{3}, \frac{2}{5}, \frac{3}{5}, \frac{2}{3}, \frac{4}{5})$	$\alpha = (\frac{1}{7}, \frac{2}{7}, \frac{3}{7}, \frac{4}{7}, \frac{5}{7}, \frac{6}{7})$ $\beta = (0, \frac{1}{10}, \frac{3}{10}, \frac{7}{10}, \frac{5}{6}, \frac{9}{10})$	210	Sporadic	Yes
$\alpha = (\frac{1}{18}, \frac{5}{18}, \frac{7}{18}, \frac{11}{18}, \frac{13}{18}, \frac{17}{18})$ $\beta = (0, 0, 0, \frac{1}{4}, \frac{3}{5}, \frac{3}{4})$	$\alpha = (0, \frac{1}{9}, \frac{2}{9}, \frac{4}{9}, \frac{5}{9}, \frac{7}{9}, \frac{8}{9})$ $\beta = (\frac{1}{6}, \frac{1}{4}, \frac{2}{2}, \frac{2}{2}, \frac{3}{4}, \frac{5}{6})$	16	Sporadic	Yes
$\alpha = (0, \frac{1}{12}, \frac{5}{12}, \frac{7}{12}, \frac{11}{12}, \frac{13}{12})$ $\beta = (\frac{1}{5}, \frac{2}{5}, \frac{1}{2}, \frac{3}{5}, \frac{4}{5})$	$\alpha = (\frac{1}{12}, \frac{5}{6}, \frac{7}{12}, \frac{2}{2}, \frac{12}{12}, \frac{6}{6}, \frac{12}{12})$ $\beta = (0, 0, 0, \frac{1}{10}, \frac{3}{10}, \frac{7}{10}, \frac{9}{10})$	40	Sporadic	Yes
$\alpha = (0, \frac{1}{9}, \frac{2}{9}, \frac{4}{9}, \frac{5}{9}, \frac{7}{9}, \frac{8}{9})$ $\beta = (\frac{1}{5}, \frac{2}{5}, \frac{2}{2}, \frac{2}{2}, \frac{3}{5}, \frac{4}{5})$	$\alpha = (\frac{1}{18}, \frac{5}{18}, \frac{7}{18}, \frac{11}{18}, \frac{13}{18}, \frac{17}{18})$ $\beta = (0, 0, 0, \frac{1}{10}, \frac{3}{10}, \frac{7}{10}, \frac{9}{10})$	40	Sporadic	?
$\alpha = (\frac{1}{12}, \frac{5}{6}, \frac{7}{12}, \frac{2}{2}, \frac{12}{12}, \frac{6}{6}, \frac{12}{12})$ $\beta = (0, 0, 0, \frac{1}{8}, \frac{5}{8}, \frac{7}{8})$	$\alpha = (0, \frac{1}{12}, \frac{5}{12}, \frac{7}{12}, \frac{2}{2}, \frac{11}{12})$ $\beta = (\frac{1}{8}, \frac{3}{8}, \frac{1}{2}, \frac{1}{2}, \frac{5}{8}, \frac{7}{8})$	16	Sporadic	Yes
$\alpha = (\frac{1}{18}, \frac{5}{18}, \frac{7}{18}, \frac{11}{18}, \frac{13}{18}, \frac{17}{18})$ $\beta = (0, 0, 0, \frac{1}{8}, \frac{5}{8}, \frac{7}{8})$	$\alpha = (0, \frac{1}{9}, \frac{2}{9}, \frac{4}{9}, \frac{5}{9}, \frac{7}{9}, \frac{8}{9})$ $\beta = (\frac{1}{8}, \frac{3}{8}, \frac{2}{2}, \frac{2}{2}, \frac{5}{8}, \frac{7}{8})$	16	Sporadic	Yes
$\alpha = (0, \frac{1}{18}, \frac{5}{18}, \frac{7}{18}, \frac{11}{18}, \frac{13}{18}, \frac{17}{18})$ $\beta = (\frac{1}{16}, \frac{3}{16}, \frac{5}{16}, \frac{7}{16}, \frac{9}{16}, \frac{11}{16}, \frac{13}{16}, \frac{15}{16})$	$\alpha = (\frac{1}{9}, \frac{2}{9}, \frac{3}{9}, \frac{4}{9}, \frac{5}{9}, \frac{7}{9}, \frac{8}{9})$ $\beta = (0, \frac{1}{16}, \frac{3}{16}, \frac{5}{16}, \frac{7}{16}, \frac{9}{16}, \frac{11}{16}, \frac{13}{16}, \frac{15}{16})$	36	$\mathcal{M}_1(1, 9)$	Yes
$\alpha = (0, \frac{1}{18}, \frac{5}{18}, \frac{7}{18}, \frac{11}{18}, \frac{13}{18}, \frac{17}{18})$ $\beta = (\frac{1}{12}, \frac{1}{4}, \frac{3}{5}, \frac{7}{12}, \frac{2}{2}, \frac{3}{4}, \frac{11}{12})$	$\alpha = (\frac{1}{9}, \frac{2}{9}, \frac{3}{9}, \frac{4}{9}, \frac{5}{9}, \frac{7}{9}, \frac{8}{9})$ $\beta = (0, \frac{1}{12}, \frac{1}{6}, \frac{4}{4}, \frac{1}{2}, \frac{5}{12}, \frac{7}{12}, \frac{2}{4}, \frac{8}{6}, \frac{11}{12})$	4, 12, 36	$\mathcal{M}_1(3, 9)$ , $\mathcal{M}_1(1, 3, 9)$	?
$\alpha = (0, \frac{1}{18}, \frac{5}{18}, \frac{7}{18}, \frac{11}{18}, \frac{13}{18}, \frac{17}{18})$ $\beta = (\frac{1}{8}, \frac{3}{8}, \frac{5}{8}, \frac{2}{2}, \frac{5}{8}, \frac{7}{8}, \frac{9}{8})$	$\alpha = (\frac{1}{9}, \frac{2}{9}, \frac{3}{9}, \frac{4}{9}, \frac{5}{9}, \frac{7}{9}, \frac{8}{9})$ $\beta = (0, \frac{1}{10}, \frac{3}{10}, \frac{5}{10}, \frac{7}{10}, \frac{9}{10}, \frac{11}{10})$	180	$\mathcal{M}_1(5, 9)$	?
$\alpha = (0, \frac{1}{18}, \frac{5}{18}, \frac{7}{18}, \frac{11}{18}, \frac{13}{18}, \frac{17}{18})$ $\beta = (\frac{1}{7}, \frac{1}{4}, \frac{3}{7}, \frac{2}{2}, \frac{7}{7}, \frac{3}{4}, \frac{6}{7})$	$\alpha = (\frac{1}{9}, \frac{2}{9}, \frac{3}{9}, \frac{4}{9}, \frac{5}{9}, \frac{7}{9}, \frac{8}{9})$ $\beta = (0, \frac{1}{14}, \frac{3}{14}, \frac{5}{14}, \frac{9}{14}, \frac{11}{14}, \frac{13}{14}, \frac{15}{14})$	252	$\mathcal{M}_1(7, 9)$	Yes

$\alpha = (0, \frac{1}{10}, \frac{3}{5}, \frac{7}{10}, \frac{3}{5}, \frac{7}{10}, \frac{4}{9}, \frac{9}{10})$ $\beta = (\frac{1}{6}, \frac{2}{9}, \frac{1}{3}, \frac{5}{9}, \frac{2}{9}, \frac{5}{9}, \frac{7}{9}, \frac{8}{9})$	$\alpha = (\frac{1}{10}, \frac{3}{5}, \frac{7}{10}, \frac{3}{5}, \frac{7}{10}, \frac{4}{9}, \frac{9}{10})$ $\beta = (0, \frac{1}{18}, \frac{5}{18}, \frac{7}{18}, \frac{11}{18}, \frac{13}{18}, \frac{5}{6}, \frac{17}{18})$	90	$\mathcal{M}_1(1, 9, 9)$	Yes
$\alpha = (0, \frac{1}{10}, \frac{3}{5}, \frac{7}{10}, \frac{3}{5}, \frac{7}{10}, \frac{4}{9}, \frac{9}{10})$ $\beta = (\frac{1}{7}, \frac{2}{7}, \frac{3}{7}, \frac{4}{7}, \frac{5}{7}, \frac{6}{7}, \frac{7}{7}, \frac{8}{7})$	$\alpha = (\frac{1}{10}, \frac{3}{5}, \frac{7}{10}, \frac{3}{5}, \frac{7}{10}, \frac{4}{9}, \frac{9}{10})$ $\beta = (0, \frac{1}{14}, \frac{3}{14}, \frac{5}{14}, \frac{9}{14}, \frac{11}{14}, \frac{13}{14}, \frac{15}{14})$	210	$\mathcal{M}_1(3, 9, 9)$	Yes
$\alpha = (\frac{1}{16}, \frac{3}{16}, \frac{5}{16}, \frac{7}{16}, \frac{9}{16}, \frac{11}{16}, \frac{13}{16}, \frac{15}{16})$ $\beta = (0, 0, 0, \frac{1}{14}, \frac{3}{14}, \frac{5}{14}, \frac{9}{14}, \frac{11}{14}, \frac{13}{14})$	$\alpha = (0, \frac{1}{16}, \frac{3}{16}, \frac{5}{16}, \frac{7}{16}, \frac{9}{16}, \frac{11}{16}, \frac{13}{16}, \frac{15}{16})$ $\beta = (\frac{1}{7}, \frac{2}{7}, \frac{3}{7}, \frac{4}{7}, \frac{5}{7}, \frac{6}{7}, \frac{7}{7}, \frac{8}{7})$	2, 2, 112	$\mathcal{M}_2(1, 9)$	?
$\alpha = (\frac{1}{16}, \frac{3}{16}, \frac{5}{16}, \frac{7}{16}, \frac{9}{16}, \frac{11}{16}, \frac{13}{16}, \frac{15}{16})$ $\beta = (0, 0, 0, \frac{1}{12}, \frac{2}{12}, \frac{3}{12}, \frac{4}{12}, \frac{11}{12})$	$\alpha = (0, \frac{1}{16}, \frac{3}{16}, \frac{5}{16}, \frac{7}{16}, \frac{9}{16}, \frac{11}{16}, \frac{13}{16}, \frac{15}{16})$ $\beta = (\frac{1}{12}, \frac{2}{12}, \frac{3}{12}, \frac{4}{12}, \frac{5}{12}, \frac{6}{12}, \frac{7}{12}, \frac{11}{12})$	2, 2, 2, 2, 32	$\mathcal{M}_2(2, 9)$	?
$\alpha = (0, \frac{1}{16}, \frac{3}{16}, \frac{5}{16}, \frac{7}{16}, \frac{9}{16}, \frac{11}{16}, \frac{13}{16}, \frac{15}{16})$ $\beta = (\frac{1}{6}, \frac{2}{6}, \frac{3}{6}, \frac{4}{6}, \frac{5}{6}, \frac{7}{6}, \frac{8}{6}, \frac{9}{6})$	$\alpha = (\frac{1}{16}, \frac{3}{16}, \frac{5}{16}, \frac{7}{16}, \frac{9}{16}, \frac{11}{16}, \frac{13}{16}, \frac{15}{16})$ $\beta = (0, 0, 0, \frac{1}{10}, \frac{3}{10}, \frac{5}{10}, \frac{7}{10}, \frac{9}{10})$	2, 2, 80	$\mathcal{M}_2(3, 9)$	Yes
$\alpha = (\frac{1}{16}, \frac{3}{16}, \frac{5}{16}, \frac{7}{16}, \frac{9}{16}, \frac{11}{16}, \frac{13}{16}, \frac{15}{16})$ $\beta = (0, 0, 0, \frac{1}{6}, \frac{2}{6}, \frac{3}{6}, \frac{4}{6}, \frac{5}{6})$	$\alpha = (0, \frac{1}{16}, \frac{3}{16}, \frac{5}{16}, \frac{7}{16}, \frac{9}{16}, \frac{11}{16}, \frac{13}{16}, \frac{15}{16})$ $\beta = (\frac{1}{10}, \frac{3}{10}, \frac{5}{10}, \frac{7}{10}, \frac{9}{10}, \frac{11}{10}, \frac{13}{10}, \frac{15}{10})$	2, 2, 48	$\mathcal{M}_2(5, 9)$	Yes
$\alpha = (\frac{1}{16}, \frac{3}{16}, \frac{5}{16}, \frac{7}{16}, \frac{9}{16}, \frac{11}{16}, \frac{13}{16}, \frac{15}{16})$ $\beta = (0, 0, 0, \frac{1}{6}, \frac{2}{6}, \frac{3}{6}, \frac{4}{6}, \frac{5}{6})$	$\alpha = (0, \frac{1}{16}, \frac{3}{16}, \frac{5}{16}, \frac{7}{16}, \frac{9}{16}, \frac{11}{16}, \frac{13}{16}, \frac{15}{16})$ $\beta = (\frac{1}{6}, \frac{2}{6}, \frac{3}{6}, \frac{4}{6}, \frac{5}{6}, \frac{7}{6}, \frac{8}{6}, \frac{9}{6})$	2, 2, 2, 96	$\mathcal{M}_2(6, 9)$	?
$\alpha = (\frac{1}{16}, \frac{3}{16}, \frac{5}{16}, \frac{7}{16}, \frac{9}{16}, \frac{11}{16}, \frac{13}{16}, \frac{15}{16})$ $\beta = (0, 0, 0, \frac{1}{7}, \frac{2}{7}, \frac{3}{7}, \frac{4}{7}, \frac{5}{7}, \frac{6}{7})$	$\alpha = (0, \frac{1}{16}, \frac{3}{16}, \frac{5}{16}, \frac{7}{16}, \frac{9}{16}, \frac{11}{16}, \frac{13}{16}, \frac{15}{16})$ $\beta = (\frac{1}{14}, \frac{3}{14}, \frac{5}{14}, \frac{7}{14}, \frac{9}{14}, \frac{11}{14}, \frac{13}{14}, \frac{15}{14})$	2, 2, 16	$\mathcal{M}_2(7, 9)$	Yes
$\alpha = (0, \frac{1}{12}, \frac{3}{12}, \frac{5}{12}, \frac{7}{12}, \frac{9}{12}, \frac{11}{12}, \frac{13}{12})$ $\beta = (\frac{1}{8}, \frac{3}{8}, \frac{5}{8}, \frac{7}{8}, \frac{9}{8}, \frac{11}{8}, \frac{13}{8}, \frac{15}{8})$	$\alpha = (\frac{1}{12}, \frac{3}{12}, \frac{5}{12}, \frac{7}{12}, \frac{9}{12}, \frac{11}{12}, \frac{13}{12}, \frac{15}{12})$ $\beta = (0, 0, 0, \frac{1}{8}, \frac{3}{8}, \frac{5}{8}, \frac{7}{8}, \frac{9}{8}, \frac{11}{8}, \frac{13}{8}, \frac{15}{8})$	3, 3, 3, 288	$\mathcal{M}_2(1, 2, 9)$ , $\mathcal{M}_3(1, 2, 9)$	?
$\alpha = (0, \frac{1}{10}, \frac{3}{5}, \frac{7}{10}, \frac{3}{5}, \frac{7}{10}, \frac{4}{9}, \frac{9}{10})$ $\beta = (\frac{1}{8}, \frac{3}{8}, \frac{5}{8}, \frac{7}{8}, \frac{9}{8}, \frac{11}{8}, \frac{13}{8}, \frac{15}{8})$	$\alpha = (\frac{1}{10}, \frac{3}{5}, \frac{7}{10}, \frac{3}{5}, \frac{7}{10}, \frac{4}{9}, \frac{9}{10})$ $\beta = (0, 0, 0, \frac{1}{8}, \frac{3}{8}, \frac{5}{8}, \frac{7}{8}, \frac{9}{8}, \frac{11}{8}, \frac{13}{8}, \frac{15}{8})$	5, 5, 160	$\mathcal{M}_2(1, 4, 9)$ , $\mathcal{M}_3(1, 4, 9)$	?





$\alpha = (\frac{1}{8}, \frac{3}{4}, \frac{1}{8}, \frac{1}{2}, \frac{1}{2}, \frac{1}{2}, \frac{1}{8}, \frac{3}{4}, \frac{7}{8})$ $\beta = (0, 0, 0, \frac{1}{7}, \frac{2}{7}, \frac{3}{7}, \frac{4}{7}, \frac{5}{7}, \frac{6}{7})$	$\alpha = (0, 0, 0, \frac{1}{8}, \frac{1}{4}, \frac{3}{8}, \frac{5}{8}, \frac{3}{4}, \frac{7}{8})$ $\beta = (\frac{1}{14}, \frac{3}{14}, \frac{5}{14}, \frac{1}{2}, \frac{2}{2}, \frac{1}{14}, \frac{11}{14}, \frac{13}{14})$	8, 64, 64	$\mathcal{N}_4(1, 7, 9)$	?*
$\alpha = (\frac{1}{8}, \frac{3}{8}, \frac{1}{2}, \frac{1}{2}, \frac{1}{2}, \frac{3}{8}, \frac{4}{8}, \frac{7}{8})$ $\beta = (0, 0, 0, \frac{1}{5}, \frac{2}{5}, \frac{3}{5}, \frac{2}{5}, \frac{4}{5})$	$\alpha = (0, 0, 0, \frac{1}{8}, \frac{3}{8}, \frac{5}{8}, \frac{3}{4}, \frac{7}{8})$ $\beta = (\frac{1}{10}, \frac{3}{10}, \frac{5}{10}, \frac{1}{2}, \frac{2}{2}, \frac{1}{10}, \frac{7}{10}, \frac{9}{10})$	8, 64, 64	$\mathcal{N}_4(3, 7, 9)$	?*
$\alpha = (\frac{1}{18}, \frac{7}{18}, \frac{1}{18}, \frac{1}{2}, \frac{1}{2}, \frac{11}{18}, \frac{13}{18}, \frac{17}{18})$ $\beta = (0, 0, 0, \frac{1}{12}, \frac{5}{12}, \frac{7}{12}, \frac{2}{3}, \frac{11}{12})$	$\alpha = (0, 0, 0, \frac{1}{9}, \frac{2}{9}, \frac{4}{9}, \frac{5}{9}, \frac{7}{9}, \frac{8}{9})$ $\beta = (\frac{1}{12}, \frac{5}{12}, \frac{7}{12}, \frac{1}{2}, \frac{2}{2}, \frac{12}{12}, \frac{5}{12}, \frac{11}{12})$	2, 16, 16	Sporadic	?
$\alpha = (\frac{1}{18}, \frac{7}{18}, \frac{1}{18}, \frac{1}{2}, \frac{1}{2}, \frac{11}{18}, \frac{13}{18}, \frac{17}{18})$ $\beta = (0, 0, 0, \frac{1}{5}, \frac{2}{5}, \frac{3}{5}, \frac{2}{5}, \frac{4}{5})$	$\alpha = (0, 0, 0, \frac{1}{9}, \frac{2}{9}, \frac{4}{9}, \frac{5}{9}, \frac{7}{9}, \frac{8}{9})$ $\beta = (\frac{1}{10}, \frac{3}{10}, \frac{5}{10}, \frac{1}{2}, \frac{2}{2}, \frac{10}{10}, \frac{7}{10}, \frac{9}{10})$	2, 16, 16	Sporadic	?
$\alpha = (\frac{1}{18}, \frac{7}{18}, \frac{1}{18}, \frac{1}{2}, \frac{1}{2}, \frac{11}{18}, \frac{13}{18}, \frac{17}{18})$ $\beta = (0, 0, 0, \frac{1}{7}, \frac{2}{7}, \frac{3}{7}, \frac{4}{7}, \frac{5}{7}, \frac{6}{7})$	$\alpha = (0, 0, 0, \frac{1}{9}, \frac{2}{9}, \frac{4}{9}, \frac{5}{9}, \frac{7}{9}, \frac{8}{9})$ $\beta = (\frac{1}{14}, \frac{3}{14}, \frac{5}{14}, \frac{1}{2}, \frac{2}{2}, \frac{14}{14}, \frac{11}{14}, \frac{13}{14})$	2, 16, 16	Sporadic	?
$\alpha = (\frac{1}{14}, \frac{5}{14}, \frac{1}{14}, \frac{1}{2}, \frac{1}{2}, \frac{9}{14}, \frac{11}{14}, \frac{13}{14})$ $\beta = (0, 0, 0, \frac{1}{12}, \frac{5}{12}, \frac{7}{12}, \frac{2}{3}, \frac{11}{12})$	$\alpha = (0, 0, 0, \frac{1}{7}, \frac{2}{7}, \frac{3}{7}, \frac{4}{7}, \frac{5}{7}, \frac{6}{7})$ $\beta = (\frac{1}{12}, \frac{5}{12}, \frac{7}{12}, \frac{1}{2}, \frac{2}{2}, \frac{12}{12}, \frac{5}{12}, \frac{11}{12})$	2, 16, 16	Sporadic	?
$\alpha = (\frac{1}{14}, \frac{5}{14}, \frac{1}{14}, \frac{1}{2}, \frac{1}{2}, \frac{9}{14}, \frac{11}{14}, \frac{13}{14})$ $\beta = (0, 0, 0, \frac{1}{5}, \frac{2}{5}, \frac{3}{5}, \frac{2}{5}, \frac{4}{5})$	$\alpha = (0, 0, 0, \frac{1}{7}, \frac{2}{7}, \frac{3}{7}, \frac{4}{7}, \frac{5}{7}, \frac{6}{7})$ $\beta = (\frac{1}{10}, \frac{3}{10}, \frac{5}{10}, \frac{1}{2}, \frac{2}{2}, \frac{10}{10}, \frac{7}{10}, \frac{9}{10})$	2, 16, 16	Sporadic	?*
$\alpha = (\frac{1}{30}, \frac{7}{30}, \frac{11}{30}, \frac{1}{30}, \frac{17}{30}, \frac{19}{30}, \frac{23}{30}, \frac{29}{30})$ $\beta = (0, 0, 0, \frac{1}{18}, \frac{5}{18}, \frac{7}{18}, \frac{11}{18}, \frac{13}{18}, \frac{17}{18})$	$\alpha = (0, \frac{1}{15}, \frac{2}{15}, \frac{4}{15}, \frac{7}{15}, \frac{8}{15}, \frac{11}{15}, \frac{13}{15}, \frac{14}{15})$ $\beta = (\frac{1}{9}, \frac{2}{9}, \frac{4}{9}, \frac{1}{2}, \frac{2}{2}, \frac{9}{9}, \frac{5}{9}, \frac{8}{9})$	24	Sporadic	Yes
$\alpha = (\frac{1}{30}, \frac{7}{30}, \frac{11}{30}, \frac{1}{30}, \frac{17}{30}, \frac{19}{30}, \frac{23}{30}, \frac{29}{30})$ $\beta = (0, 0, 0, \frac{1}{12}, \frac{5}{12}, \frac{7}{12}, \frac{2}{3}, \frac{11}{12})$	$\alpha = (0, \frac{1}{15}, \frac{2}{15}, \frac{4}{15}, \frac{7}{15}, \frac{8}{15}, \frac{11}{15}, \frac{13}{15}, \frac{14}{15})$ $\beta = (\frac{1}{12}, \frac{5}{12}, \frac{7}{12}, \frac{1}{2}, \frac{2}{2}, \frac{12}{12}, \frac{5}{12}, \frac{11}{12})$	8	Sporadic	Yes
$\alpha = (\frac{1}{30}, \frac{7}{30}, \frac{11}{30}, \frac{1}{30}, \frac{17}{30}, \frac{19}{30}, \frac{23}{30}, \frac{29}{30})$ $\beta = (0, 0, 0, \frac{1}{8}, \frac{3}{8}, \frac{5}{8}, \frac{2}{8}, \frac{7}{8})$	$\alpha = (0, \frac{1}{15}, \frac{2}{15}, \frac{4}{15}, \frac{7}{15}, \frac{8}{15}, \frac{11}{15}, \frac{13}{15}, \frac{14}{15})$ $\beta = (\frac{1}{8}, \frac{3}{8}, \frac{5}{8}, \frac{1}{2}, \frac{2}{2}, \frac{8}{8}, \frac{5}{8}, \frac{7}{8})$	16	Sporadic	Yes

$\alpha = (\frac{1}{30}, \frac{7}{30}, \frac{11}{30}, \frac{13}{30}, \frac{1}{2}, \frac{17}{30}, \frac{19}{30}, \frac{23}{30}, \frac{29}{30})$ $\beta = (0, 0, 0, \frac{1}{5}, \frac{1}{4}, \frac{2}{5}, \frac{3}{4}, 5)$	$\alpha = (0, \frac{1}{15}, \frac{2}{15}, \frac{4}{15}, \frac{7}{15}, \frac{8}{15}, \frac{11}{15}, \frac{13}{15}, \frac{14}{15})$ $\beta = (\frac{1}{10}, \frac{3}{4}, \frac{1}{10}, \frac{2}{2}, \frac{1}{2}, \frac{7}{10}, \frac{3}{4}, \frac{9}{10})$	16	Sporadic	Yes
$\alpha = (\frac{1}{30}, \frac{7}{30}, \frac{11}{30}, \frac{13}{30}, \frac{17}{30}, \frac{19}{30}, \frac{23}{30}, \frac{29}{30})$ $\beta = (0, 0, 0, \frac{1}{5}, \frac{1}{3}, \frac{2}{5}, \frac{3}{4}, 5)$	$\alpha = (0, \frac{1}{15}, \frac{2}{15}, \frac{4}{15}, \frac{7}{15}, \frac{8}{15}, \frac{11}{15}, \frac{13}{15}, \frac{14}{15})$ $\beta = (\frac{1}{10}, \frac{3}{6}, \frac{1}{10}, \frac{2}{2}, \frac{1}{2}, \frac{7}{10}, \frac{3}{6}, \frac{9}{10})$	8	Sporadic	Yes
$\alpha = (\frac{1}{30}, \frac{7}{30}, \frac{11}{30}, \frac{13}{30}, \frac{17}{30}, \frac{19}{30}, \frac{23}{30}, \frac{29}{30})$ $\beta = (0, 0, 0, \frac{1}{7}, \frac{2}{7}, \frac{3}{7}, \frac{4}{7}, 7)$	$\alpha = (0, \frac{1}{15}, \frac{2}{15}, \frac{4}{15}, \frac{7}{15}, \frac{8}{15}, \frac{11}{15}, \frac{13}{15}, \frac{14}{15})$ $\beta = (\frac{1}{14}, \frac{3}{14}, \frac{5}{14}, \frac{1}{2}, \frac{2}{2}, \frac{9}{14}, \frac{11}{14}, \frac{13}{14})$	8	Sporadic	Yes
$\alpha = (\frac{1}{30}, \frac{7}{30}, \frac{11}{30}, \frac{13}{30}, \frac{17}{30}, \frac{19}{30}, \frac{23}{30}, \frac{29}{30})$ $\beta = (0, 0, 0, \frac{1}{12}, \frac{1}{4}, \frac{5}{12}, \frac{7}{4}, \frac{11}{12})$	$\alpha = (0, \frac{1}{15}, \frac{2}{15}, \frac{4}{15}, \frac{7}{15}, \frac{8}{15}, \frac{11}{15}, \frac{13}{15}, \frac{14}{15})$ $\beta = (\frac{1}{12}, \frac{4}{12}, \frac{5}{12}, \frac{1}{2}, \frac{2}{2}, \frac{7}{12}, \frac{4}{4}, \frac{11}{12})$	16	Sporadic	Yes
$\alpha = (\frac{1}{30}, \frac{7}{30}, \frac{11}{30}, \frac{13}{30}, \frac{17}{30}, \frac{19}{30}, \frac{23}{30}, \frac{29}{30})$ $\beta = (0, 0, 0, \frac{1}{8}, \frac{1}{4}, \frac{3}{8}, \frac{5}{4}, 8)$	$\alpha = (0, \frac{1}{15}, \frac{2}{15}, \frac{4}{15}, \frac{7}{15}, \frac{8}{15}, \frac{11}{15}, \frac{13}{15}, \frac{14}{15})$ $\beta = (\frac{1}{8}, \frac{3}{4}, \frac{1}{8}, \frac{2}{2}, \frac{1}{2}, \frac{5}{8}, \frac{3}{4}, \frac{7}{8})$	32	Sporadic	Yes
$\alpha = (\frac{1}{20}, \frac{3}{20}, \frac{7}{20}, \frac{9}{20}, \frac{11}{20}, \frac{13}{20}, \frac{17}{20}, \frac{19}{20})$ $\beta = (0, 0, 0, \frac{1}{5}, \frac{1}{7}, \frac{2}{7}, \frac{11}{7})$	$\alpha = (0, \frac{1}{20}, \frac{3}{20}, \frac{7}{20}, \frac{9}{20}, \frac{11}{20}, \frac{13}{20}, \frac{17}{20}, \frac{19}{20})$ $\beta = (\frac{1}{12}, \frac{3}{6}, \frac{1}{12}, \frac{2}{2}, \frac{2}{2}, \frac{7}{12}, \frac{6}{6}, \frac{11}{12})$	8	Sporadic	Yes
$\alpha = (\frac{1}{20}, \frac{3}{20}, \frac{7}{20}, \frac{9}{20}, \frac{11}{20}, \frac{13}{20}, \frac{17}{20}, \frac{19}{20})$ $\beta = (0, 0, 0, \frac{1}{8}, \frac{1}{3}, \frac{5}{8}, \frac{2}{3}, 8)$	$\alpha = (0, \frac{1}{20}, \frac{3}{20}, \frac{7}{20}, \frac{9}{20}, \frac{11}{20}, \frac{13}{20}, \frac{17}{20}, \frac{19}{20})$ $\beta = (\frac{1}{8}, \frac{3}{6}, \frac{1}{8}, \frac{2}{2}, \frac{2}{2}, \frac{5}{8}, \frac{2}{6}, \frac{7}{8})$	16	Sporadic	Yes
$\alpha = (\frac{1}{20}, \frac{3}{20}, \frac{7}{20}, \frac{9}{20}, \frac{11}{20}, \frac{13}{20}, \frac{17}{20}, \frac{19}{20})$ $\beta = (0, 0, 0, \frac{1}{7}, \frac{2}{7}, \frac{4}{7}, \frac{5}{7}, 7)$	$\alpha = (0, \frac{1}{20}, \frac{3}{20}, \frac{7}{20}, \frac{9}{20}, \frac{11}{20}, \frac{13}{20}, \frac{17}{20}, \frac{19}{20})$ $\beta = (\frac{1}{14}, \frac{3}{14}, \frac{5}{14}, \frac{1}{2}, \frac{2}{2}, \frac{9}{14}, \frac{11}{14}, \frac{13}{14})$	8	Sporadic	Yes
$\alpha = (\frac{1}{20}, \frac{3}{20}, \frac{7}{20}, \frac{9}{20}, \frac{11}{20}, \frac{13}{20}, \frac{17}{20}, \frac{19}{20})$ $\beta = (0, 0, 0, \frac{1}{9}, \frac{2}{9}, \frac{4}{9}, \frac{5}{9}, 9)$	$\alpha = (0, \frac{1}{20}, \frac{3}{20}, \frac{7}{20}, \frac{9}{20}, \frac{11}{20}, \frac{13}{20}, \frac{17}{20}, \frac{19}{20})$ $\beta = (\frac{1}{18}, \frac{3}{18}, \frac{5}{18}, \frac{2}{2}, \frac{2}{2}, \frac{7}{18}, \frac{11}{18}, \frac{13}{18})$	8	Sporadic	Yes
$\alpha = (\frac{1}{24}, \frac{5}{24}, \frac{7}{24}, \frac{11}{24}, \frac{13}{24}, \frac{17}{24}, \frac{19}{24}, \frac{23}{24})$ $\beta = (0, 0, 0, \frac{1}{5}, \frac{1}{4}, \frac{3}{5}, \frac{4}{4}, 5)$	$\alpha = (0, \frac{1}{24}, \frac{5}{24}, \frac{7}{24}, \frac{11}{24}, \frac{13}{24}, \frac{17}{24}, \frac{19}{24}, \frac{23}{24})$ $\beta = (\frac{1}{10}, \frac{3}{4}, \frac{1}{10}, \frac{2}{2}, \frac{2}{2}, \frac{7}{10}, \frac{4}{4}, \frac{9}{10})$	16	Sporadic	Yes





**Table 3.** Odd monodromy groups: dimensions 5, 7, 9.<sup>7</sup>

$(\alpha, \beta)$	$(\alpha, \beta)$ with shift by 1/2	Family	$H_r$ contained in $R_f$ ?
$\alpha = (0, \frac{1}{10}, \frac{3}{10}, \frac{7}{10}, \frac{9}{10})$ $\beta = (\frac{1}{5}, \frac{2}{5}, \frac{2}{5}, \frac{3}{5}, \frac{4}{5})$	$\alpha = (\frac{1}{5}, \frac{2}{5}, \frac{1}{2}, \frac{3}{5}, \frac{4}{5})$ $\beta = (0, \frac{1}{10}, \frac{3}{10}, \frac{7}{10}, \frac{9}{10})$	$\mathcal{N}_1(1, 1, 5)$	Yes
$\alpha = (0, \frac{1}{8}, \frac{3}{8}, \frac{5}{8}, \frac{7}{8})$ $\beta = (\frac{1}{4}, \frac{1}{2}, \frac{2}{2}, \frac{2}{4}, \frac{3}{4})$	$\alpha = (\frac{1}{8}, \frac{3}{8}, \frac{2}{2}, \frac{5}{8}, \frac{7}{8})$ $\beta = (0, 0, 0, \frac{1}{4}, \frac{3}{4})$	$\mathcal{M}_2(2, 5), \mathcal{N}_2(1, 1, 5),$ $\mathcal{N}_3(1, 1, 5)$	Yes
$\alpha = (\frac{1}{6}, \frac{1}{2}, \frac{1}{2}, \frac{2}{2}, \frac{2}{6})$ $\beta = (0, 0, 0, \frac{1}{3}, \frac{2}{3})$	$\alpha = (0, 0, 0, \frac{1}{3}, \frac{2}{3})$ $\beta = (\frac{1}{6}, \frac{1}{2}, \frac{1}{2}, \frac{2}{2}, \frac{2}{6})$	$\mathcal{M}_3(3, 5),$ $\mathcal{N}_4(1, 1, 5)$	Yes*
$\alpha = (0, \frac{1}{14}, \frac{3}{14}, \frac{5}{14}, \frac{9}{14}, \frac{11}{14}, \frac{13}{14})$ $\beta = (\frac{1}{7}, \frac{2}{7}, \frac{3}{7}, \frac{4}{7}, \frac{5}{7}, \frac{6}{7})$	$\alpha = (\frac{1}{7}, \frac{2}{7}, \frac{3}{7}, \frac{1}{2}, \frac{4}{7}, \frac{5}{7}, \frac{6}{7})$ $\beta = (0, \frac{1}{14}, \frac{3}{14}, \frac{5}{14}, \frac{9}{14}, \frac{11}{14}, \frac{13}{14})$	$\mathcal{N}_1(1, 1, 7)$	Yes
$\alpha = (\frac{1}{12}, \frac{1}{4}, \frac{5}{12}, \frac{7}{12}, \frac{3}{4}, \frac{11}{12})$ $\beta = (0, 0, 0, \frac{1}{6}, \frac{2}{3}, \frac{5}{6})$	$\alpha = (0, \frac{1}{12}, \frac{1}{4}, \frac{5}{12}, \frac{7}{12}, \frac{3}{4}, \frac{11}{12})$ $\beta = (\frac{1}{6}, \frac{2}{3}, \frac{2}{2}, \frac{2}{2}, \frac{2}{3}, \frac{5}{6})$	$\mathcal{M}_2(3, 7), \mathcal{N}_2(1, 1, 7),$ $\mathcal{N}_3(1, 1, 7)$	Yes
$\alpha = (\frac{1}{10}, \frac{3}{10}, \frac{1}{2}, \frac{1}{2}, \frac{7}{10}, \frac{9}{10})$ $\beta = (0, 0, 0, \frac{1}{5}, \frac{2}{5}, \frac{4}{5})$	$\alpha = (0, 0, 0, \frac{1}{5}, \frac{2}{5}, \frac{3}{5}, \frac{4}{5})$ $\beta = (\frac{1}{10}, \frac{3}{10}, \frac{1}{2}, \frac{1}{2}, \frac{7}{10}, \frac{9}{10})$	$\mathcal{M}_3(5, 7),$ $\mathcal{N}_4(1, 1, 7)$	Yes*
$\alpha = (0, \frac{1}{18}, \frac{5}{18}, \frac{7}{18}, \frac{11}{18}, \frac{13}{18}, \frac{17}{18})$ $\beta = (\frac{1}{9}, \frac{2}{9}, \frac{3}{9}, \frac{4}{9}, \frac{5}{9}, \frac{7}{9}, \frac{8}{9})$	$\alpha = (\frac{1}{9}, \frac{2}{9}, \frac{3}{9}, \frac{4}{9}, \frac{1}{2}, \frac{5}{9}, \frac{7}{9}, \frac{8}{9})$ $\beta = (0, \frac{1}{18}, \frac{5}{18}, \frac{7}{18}, \frac{11}{18}, \frac{13}{18}, \frac{17}{18})$	$\mathcal{N}_1(1, 1, 9)$	Yes
$\alpha = (0, \frac{1}{16}, \frac{3}{16}, \frac{5}{16}, \frac{9}{16}, \frac{11}{16}, \frac{15}{16})$ $\beta = (\frac{1}{8}, \frac{1}{4}, \frac{3}{8}, \frac{2}{2}, \frac{2}{2}, \frac{3}{8}, \frac{4}{8})$	$\alpha = (\frac{1}{16}, \frac{3}{16}, \frac{5}{16}, \frac{7}{16}, \frac{1}{2}, \frac{9}{16}, \frac{11}{16}, \frac{15}{16})$ $\beta = (0, 0, 0, \frac{1}{8}, \frac{3}{8}, \frac{4}{8}, \frac{7}{8})$	$\mathcal{M}_2(4, 9), \mathcal{N}_2(1, 1, 9),$ $\mathcal{N}_3(1, 1, 9)$	Yes
$\alpha = (\frac{1}{14}, \frac{3}{14}, \frac{5}{14}, \frac{2}{2}, \frac{2}{2}, \frac{9}{14}, \frac{11}{14}, \frac{13}{14})$ $\beta = (0, 0, 0, \frac{1}{7}, \frac{2}{7}, \frac{3}{7}, \frac{4}{7}, \frac{6}{7})$	$\alpha = (0, 0, 0, \frac{1}{7}, \frac{2}{7}, \frac{3}{7}, \frac{4}{7}, \frac{5}{6})$ $\beta = (\frac{1}{14}, \frac{3}{14}, \frac{5}{14}, \frac{2}{2}, \frac{2}{2}, \frac{9}{14}, \frac{11}{14}, \frac{13}{14})$	$\mathcal{M}_3(7, 9),$ $\mathcal{N}_4(1, 1, 9)$	Yes*

<sup>7</sup> Y. Park [P] has recently shown that all the  $R_f$ 's in Table 3 are thin except for the second entry, which is arithmetic. Moreover, in that case  $H_r$  is still contained in a thin reflection subgroup of  $R_f$ . In particular, all the  $H_r$ 's in Table 3 are thin.

5.2. Some numerics for hyperbolic hypergeometric monodromy groups

While our certificate for being thin succeeds in many cases as demonstrated in Sections 4 and 5, there are families such as  $\mathcal{N}_4(j, k, n)$  for which we found almost no paths between the basis vectors in the minimal distance graph. If indeed the corresponding components of  $X_f$  are singletons for members of this family, then clearly a variation of the minimal distance graph is needed if this approach is to work. A crude, and it appears mostly reliable, test for the size of  $H = H(\alpha, \beta)$  in  $O(L)$  is to simply count the number of elements in  $H$  in a large ball. That is, let  $T$  be a large number and let

$$N_H(T) := \{\gamma \in H \mid \text{trace}(\gamma^t \gamma) \leq T^2\}. \tag{5.1}$$

If  $H$  is arithmetic then it is known [L-P] that

$$N_H(T) \sim \frac{c_n T^{n-2}}{\text{Vol}(H \backslash O_f(\mathbb{R}))} \quad \text{as } T \rightarrow \infty. \tag{5.2}$$

Thus to probe the size of  $H$  we generate elements in  $H$  using our defining generators and try to determine  $N_H(T)$  for  $T$  quite large.

The difficulty is that we do not know which elements of  $O(L)$  are in  $H$  and the above procedure (by going to large generations of elements in  $H$  gotten from the generating set) only gives a lower bound for  $N_H(T)$ . In any case we can compute in this way a lower bound for  $\log(N_H(T))/\log T$  for  $T$  large. If this is essentially  $n - 2$  then this suggests that  $H$  is arithmetic, while if this number is less than  $n - 2$  it suggests that  $H$  is thin (if  $H$  is geometrically finite then this quantity should be an approximation to the Hausdorff dimension of the limit set of  $H$  (see for example [L-P]). We have run this crude test for many of our hyperbolic hypergeometric monodromies and it gives the correct answer in the cases where we have a rigorous treatment. For example, in Figures 2 and 3 we give a plot of  $\log(N_H(T))$  versus  $\log T$  for the arithmetic examples  $\alpha = (\frac{1}{3}, \frac{1}{2}, \frac{2}{3}), \beta = (0, \frac{1}{4}, \frac{3}{4})$  and  $\alpha = (\frac{1}{3}, \frac{1}{2}, \frac{2}{3}), \beta = (0, \frac{1}{6}, \frac{5}{6})$ . The similar plots for four examples with

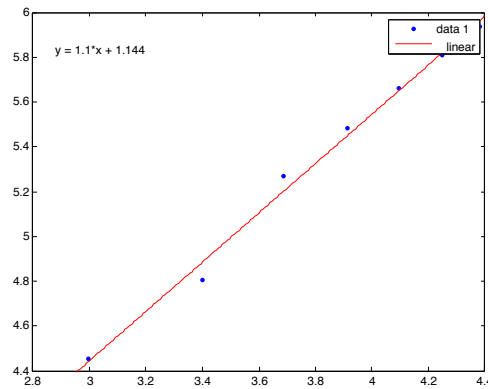
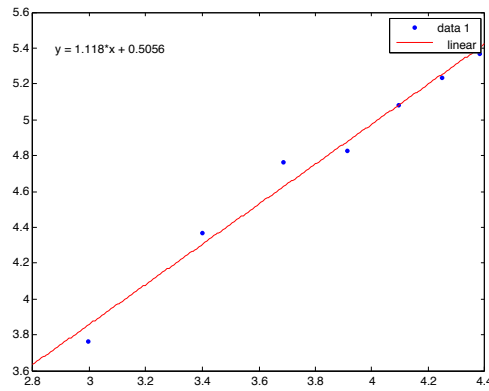
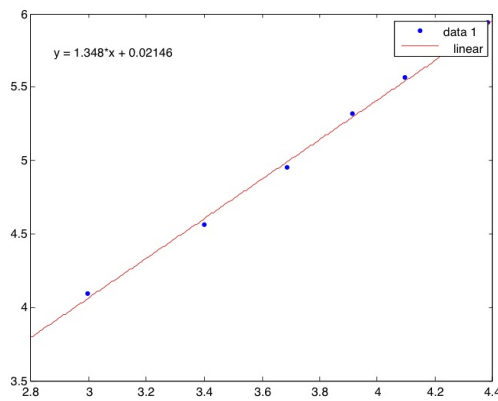


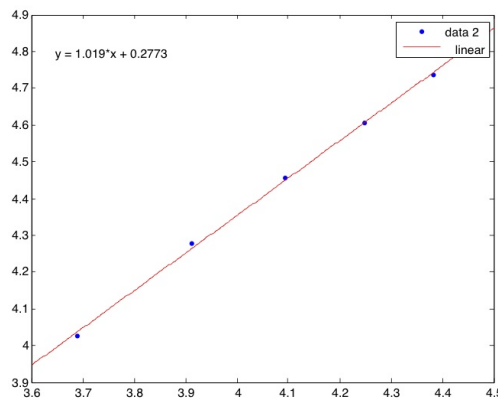
Fig. 2.  $\log(N_H(T))$  versus  $\log T$  graph for  $H(\alpha, \beta)$  where  $\alpha = (\frac{1}{3}, \frac{1}{2}, \frac{2}{3}), \beta = (0, \frac{1}{4}, \frac{3}{4})$ .



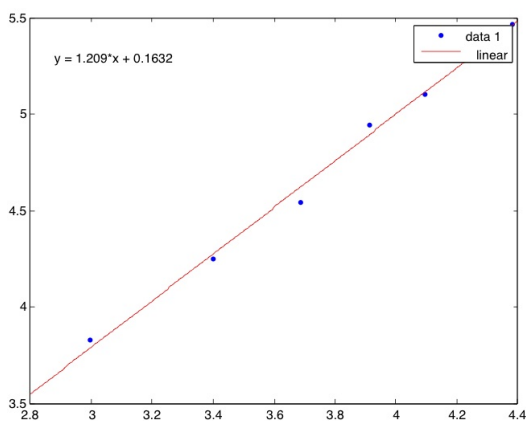
**Fig. 3.**  $\log(N_H(T))$  versus  $\log T$  graph for  $H(\alpha, \beta)$  where  $\alpha = (\frac{1}{3}, \frac{1}{2}, \frac{2}{3})$ ,  $\beta = (0, \frac{1}{6}, \frac{5}{6})$ .



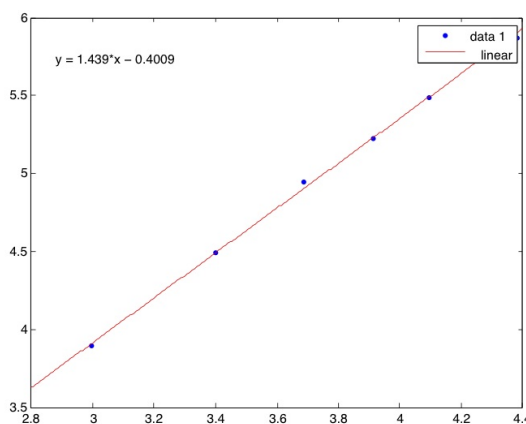
**Fig. 4.**  $\log(N_H(T))$  versus  $\log T$  graph for  $H(\alpha, \beta)$  where  $\alpha = (\frac{1}{5}, \frac{2}{5}, \frac{1}{2}, \frac{3}{5}, \frac{4}{5})$ ,  $\beta = (0, 0, 0, \frac{1}{3}, \frac{2}{3})$ .



**Fig. 5.**  $\log(N_H(T))$  versus  $\log T$  graph for  $H(\alpha, \beta)$  where  $\alpha = (\frac{1}{8}, \frac{3}{8}, \frac{1}{2}, \frac{5}{8}, \frac{7}{8})$ ,  $\beta = (0, 0, 0, \frac{1}{6}, \frac{5}{6})$ .



**Fig. 6.**  $\log(N_H(T))$  versus  $\log T$  graph for  $H(\alpha, \beta)$  where  $\alpha = (\frac{1}{6}, \frac{1}{3}, \frac{1}{2}, \frac{2}{3}, \frac{5}{6})$ ,  $\beta = (0, 0, 0, \frac{1}{4}, \frac{3}{4})$ .



**Fig. 7.**  $\log(N_H(T))$  versus  $\log T$  graph for  $H(\alpha, \beta)$  where  $\alpha = (\frac{1}{6}, \frac{1}{2}, \frac{1}{2}, \frac{1}{2}, \frac{5}{6})$ ,  $\beta = (0, 0, 0, \frac{1}{3}, \frac{2}{3})$ .

$n = 5$ , and for which our certificate failed are given in Figures 4, 5, 6, and 7. Based on these, it appears that these  $H$ 's are all thin. Further such experimentation is consistent with Conjecture 2 in the Introduction and even with the conjecture that for  $n \geq 5$ , every hyperbolic hypergeometric monodromy group is thin.

### Appendix

In this appendix, we consider the six 3-dimensional hyperbolic hypergeometric monodromy groups and show that they are all arithmetic. Our method is to determine the preimage of the groups in the spin double cover  $SL_2(\mathbb{R})$  of  $SO(2, 1)$  and work in the setting of  $SL_2$ . Once we pull back to  $SL_2$ , we rely on one of the following strategies. If



the quadratic form  $f$  that is fixed by hyperbolic hypergeometric monodromy group  $H$  is isotropic over  $\mathbb{Q}$  then one can find  $M \in \text{GL}_3(\mathbb{Q})$  such that  $M^t f M$  is some scalar multiple of  $Q_2$  below. Moreover, under such a change of variable, the preimage of  $H \cap \text{SO}_f$  in the spin double cover of  $\text{SO}_f$  can be made to sit inside  $\text{SL}_2(\mathbb{Z})$ , and in this setting showing that the group is of finite index is usually straightforward. Out of the six 3-dimensional hyperbolic hypergeometric monodromy groups, four fix an isotropic form  $f$ , and in those cases we show that the preimage of the group in the spin double cover of  $\text{SO}_f$  contains a principal congruence subgroup<sup>8</sup> of  $\text{SL}_2(\mathbb{Z})$ .<sup>8</sup>

If the form  $f$  fixed by  $H$  is anisotropic, we again pull back to the spin double cover  $\Gamma$  of  $\text{SO}_f$  in  $\text{SL}_2(\mathbb{R})$  and, after generating several elements of  $\Gamma$ , construct a region in the upper half-plane which contains a fundamental domain for  $\Gamma$  acting on  $\mathbb{H}$  (this method works for the isotropic case as well). Specifically, a Dirichlet fundamental domain for  $\Gamma$  is given by

$$\mathcal{F}_{p_0} = \bigcap_{\gamma \in \Gamma} \{z \in \mathbb{H} \mid d(z, p_0) \leq d(z, \gamma p_0)\} = \bigcap_{\gamma \in \Gamma} H(\gamma, p_0)$$

where  $p_0$  is any base point and  $H(\gamma, p_0)$  is a closed half-space. One can prove that  $\mathcal{F}_{p_0}$  is compact (and hence  $\Gamma$  is arithmetic) if the intersection  $\bigcap_{\gamma} H(\gamma, p_0)$  is compact even when taken over a *finite* number of elements  $\gamma \in \Gamma$ . Note that this method uses the same idea as described in Section 5.2: generating elements of  $\Gamma$  to say something about thinness, but in this case it can actually prove whether the group is thin or not.

Throughout this section, we let

$$Q_1 = \begin{bmatrix} 1 & 0 & 0 \\ 0 & 1 & 0 \\ 0 & 0 & -1 \end{bmatrix} \quad \text{and} \quad Q_2 = \begin{bmatrix} 0 & 0 & -1/2 \\ 0 & 1 & 0 \\ -1/2 & 0 & 0 \end{bmatrix}.$$

For these two forms we have the following spin homomorphisms from  $\text{SL}_2(\mathbb{R})$  into the  $\text{SO}_{Q_1}$  and  $\text{SO}_{Q_2}$ , respectively (see [C]):

$$\begin{bmatrix} a & b \\ c & d \end{bmatrix} \xrightarrow{\rho_1} \begin{bmatrix} \frac{1}{2}(a^2 + b^2 - c^2 + d^2) & ac - bd & \frac{1}{2}(a^2 - b^2 + c^2 - d^2) \\ ab - cd & bc + ad & ab + cd \\ \frac{1}{2}(a^2 + b^2 - c^2 - d^2) & ac + bd & \frac{1}{2}(a^2 + b^2 + c^2 + d^2) \end{bmatrix}, \quad (5.3)$$

$$\begin{bmatrix} a & b \\ c & d \end{bmatrix} \xrightarrow{\rho_2} \begin{bmatrix} a^2 & 2ac & c^2 \\ ab & ad + bc & cd \\ b^2 & 2bd & d^2 \end{bmatrix}. \quad (5.4)$$

**Example 1:**  $\alpha = (\frac{1}{2}, \frac{1}{2}, \frac{1}{2})$ ,  $\beta = (0, 0, 0)$ . In this case  $H(\alpha, \beta) \subset \text{O}_f(\mathbb{Z})$  with generators  $A, B$  where

$$f = \begin{bmatrix} 1 & 0 & -3 \\ 0 & 1 & 0 \\ -3 & 0 & 1 \end{bmatrix}, \quad A = \begin{bmatrix} 0 & 0 & -1 \\ 1 & 0 & -3 \\ 0 & 1 & -3 \end{bmatrix}, \quad B = \begin{bmatrix} 0 & 0 & 1 \\ 1 & 0 & -3 \\ 0 & 1 & 3 \end{bmatrix}.$$

---

<sup>8</sup> <sup>8</sup>In doing this, we use Sage to determine generators for  $\Gamma(N)$  for various  $N$ .

Note that  $2(M^t f M) = Q_2$  where

$$M = \begin{bmatrix} -1/8 & 1/4 & -1/4 \\ -1/4 & 0 & 1/2 \\ -1/8 & -1/4 & -1/4 \end{bmatrix},$$

and conjugation by  $M$  gives an isomorphism of the subgroup  $\langle A^2, B \rangle \subset H(\alpha, \beta) \cap \text{SO}_f(\mathbb{Z})$  with the subgroup  $\langle A', B' \rangle \subset \text{SO}_{Q_2}(\mathbb{Z})$  where

$$A' = \begin{bmatrix} 1 & 8 & 16 \\ 0 & 1 & 4 \\ 0 & 0 & 1 \end{bmatrix}, \quad B' = \begin{bmatrix} 1 & 0 & 0 \\ 1 & 1 & 0 \\ 1 & 2 & 1 \end{bmatrix}.$$

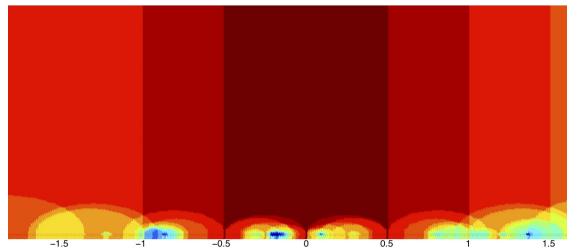
The preimage of this group in  $\text{SL}_2(\mathbb{Z})$  under the spin homomorphism in (5.4) is the group  $\langle \pm X, \pm Y \rangle$  where

$$X = \begin{bmatrix} 1 & 0 \\ 4 & 1 \end{bmatrix}, \quad Y = \begin{bmatrix} 1 & 1 \\ 0 & 1 \end{bmatrix}.$$

This group contains the generators

$$\begin{bmatrix} 1 & 4 \\ 0 & 1 \end{bmatrix}, \quad \begin{bmatrix} -15 & 4 \\ -4 & 1 \end{bmatrix}, \quad \begin{bmatrix} 5 & -4 \\ 4 & -3 \end{bmatrix}, \quad \begin{bmatrix} 9 & -16 \\ 4 & -7 \end{bmatrix}, \quad \begin{bmatrix} 13 & -36 \\ 4 & -11 \end{bmatrix}$$

of  $\Gamma(4)$ . Hence  $H(\alpha, \beta)$  is itself arithmetic. In addition, our second strategy of finding a region which contains a fundamental domain for  $H$  yields the compact region shown in Figure 8.



**Fig. 8.** Dark red region in the upper half-plane containing a fundamental domain of  $H(\alpha, \beta)$  in Example 1.

**Example 2:**  $\alpha = (\frac{1}{3}, \frac{1}{2}, \frac{2}{3}), \beta = (0, 0, 0)$ . In this case  $H(\alpha, \beta) \subset \text{O}_f(\mathbb{Z})$  with generators  $A, B$  where

$$f = \begin{bmatrix} 7 & 1 & -17 \\ 1 & 7 & 1 \\ -17 & 1 & 7 \end{bmatrix}, \quad A = \begin{bmatrix} 0 & 0 & -1 \\ 1 & 0 & -2 \\ 0 & 1 & -2 \end{bmatrix}, \quad B = \begin{bmatrix} 0 & 0 & 1 \\ 1 & 0 & -3 \\ 0 & 1 & 3 \end{bmatrix}.$$

Note that  $(M^t f M) = 3 \cdot Q_2$  where

$$M = \begin{bmatrix} -1/4 & 0 & 1/12 \\ -1/2 & 1/2 & 1/12 \\ 1/4 & -1/2 & 1/3 \end{bmatrix},$$

and conjugation by  $M$  gives an isomorphism of the subgroup  $\langle A^2, B \rangle \subset H(\alpha, \beta) \cap \text{SO}_f(\mathbb{Z})$  with the subgroup  $\langle A', B' \rangle \subset \text{SO}_{Q_2}(\mathbb{Z})$  where

$$A' = \begin{bmatrix} 1 & -2 & 1 \\ 3 & -5 & 2 \\ 9 & -12 & 4 \end{bmatrix}, \quad B' = \begin{bmatrix} 1 & -2 & 1 \\ 0 & 1 & -1 \\ 0 & 0 & 1 \end{bmatrix}.$$

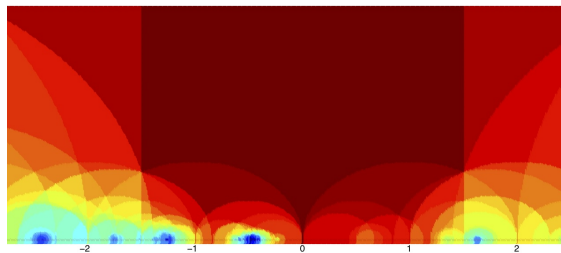
The preimage of this group in  $\text{SL}_2(\mathbb{Z})$  under the spin homomorphism in (5.4) is the group  $\langle \pm X, \pm Y \rangle$  where

$$X = \begin{bmatrix} -1 & -3 \\ 1 & 2 \end{bmatrix}, \quad Y = \begin{bmatrix} 1 & 0 \\ -1 & 1 \end{bmatrix}.$$

This group contains the generators

$$\begin{bmatrix} 1 & 3 \\ 0 & 1 \end{bmatrix}, \quad \begin{bmatrix} -8 & 3 \\ -3 & 1 \end{bmatrix}, \quad \begin{bmatrix} 4 & -3 \\ 3 & -2 \end{bmatrix}$$

of  $\Gamma(3)$ . Hence  $H(\alpha, \beta)$  is itself arithmetic. In addition, our second strategy of finding a region which contains a fundamental domain for  $H$  yields the compact region shown in Figure 9.



**Fig. 9.** Dark red region in the upper half-plane containing a fundamental domain of  $H(\alpha, \beta)$  in Example 2.

**Example 3:**  $\alpha = (\frac{1}{4}, \frac{1}{2}, \frac{3}{4}), \beta = (0, 0, 0)$ . In this case  $H(\alpha, \beta) \subset \text{O}_f(\mathbb{Z})$  with generators  $A, B$  where

$$f = \begin{bmatrix} 3 & 1 & -5 \\ 1 & 3 & 1 \\ -5 & 1 & 3 \end{bmatrix}, \quad A = \begin{bmatrix} 0 & 0 & -1 \\ 1 & 0 & -1 \\ 0 & 1 & -1 \end{bmatrix}, \quad B = \begin{bmatrix} 0 & 0 & 1 \\ 1 & 0 & -3 \\ 0 & 1 & 3 \end{bmatrix}.$$

Note that  $M^t f M = Q_1$  where

$$M = \begin{bmatrix} 1/4 & 1/4 & 1/2 \\ 0 & 1/2 & 0 \\ -1/4 & 1/4 & 1/2 \end{bmatrix},$$

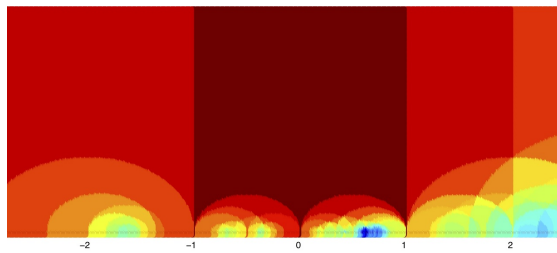
and conjugation by  $M$  gives an isomorphism of the subgroup  $\langle A^2, B \rangle \subset H(\alpha, \beta) \cap \text{SO}_f(\mathbb{Z})$  with the subgroup  $\langle A', B' \rangle \subset \text{SO}_{Q_1}(\mathbb{Z})$  where

$$A' = \begin{bmatrix} -1 & 0 & 0 \\ 0 & -1 & 0 \\ 0 & 0 & 1 \end{bmatrix}, \quad B' = \begin{bmatrix} 1 & -2 & -2 \\ 2 & -1 & -2 \\ -2 & 2 & 3 \end{bmatrix}.$$

The preimage of this group in  $\text{SL}_2(\mathbb{Z})$  under the spin homomorphism in (5.3) is the group  $\langle \pm X, \pm Y \rangle$  where

$$X = \begin{bmatrix} 0 & 1 \\ -1 & 0 \end{bmatrix}, \quad Y = \begin{bmatrix} 0 & 1 \\ -1 & 2 \end{bmatrix},$$

and  $\pm XY, \pm YX$  generate the principal congruence subgroup  $\Gamma(2)$ . Hence  $H(\alpha, \beta)$  is itself arithmetic. In addition, our second strategy of finding a region which contains a fundamental domain for  $H$  yields the compact region shown in Figure 10.



**Fig. 10.** Dark red region in the upper half-plane containing a fundamental domain of  $H(\alpha, \beta)$  in Example 3.

**Example 4:**  $\alpha = (\frac{1}{6}, \frac{1}{2}, \frac{5}{6}), \beta = (0, 0, 0)$ . In this case  $H(\alpha, \beta) \subset O_f(\mathbb{Z})$  with generators  $A, B$  where

$$f = \begin{bmatrix} 5 & 3 & -3 \\ 3 & 5 & 3 \\ -3 & 3 & 5 \end{bmatrix}, \quad A = \begin{bmatrix} 0 & 0 & -1 \\ 1 & 0 & 0 \\ 0 & 1 & 0 \end{bmatrix}, \quad B = \begin{bmatrix} 0 & 0 & 1 \\ 1 & 0 & -3 \\ 0 & 1 & 3 \end{bmatrix}.$$

Note that  $M^t f M = Q_1$  where

$$M = \begin{bmatrix} 1/4 & -1/2 & 3/4 \\ 1/4 & 1/2 & -3/4 \\ 0 & 0 & 1/2 \end{bmatrix},$$

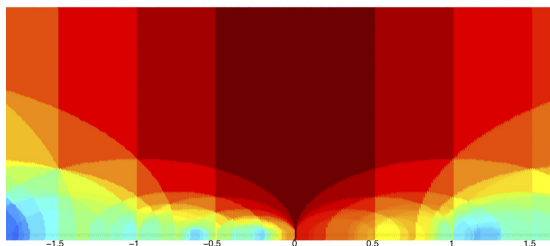
and conjugation by  $M$  gives an isomorphism of the subgroup  $\langle A^2, B \rangle \subset H(\alpha, \beta) \cap \text{SO}_f(\mathbb{Z})$  with the subgroup  $\langle A', B' \rangle \subset \text{SO}_{Q_1}(\mathbb{Z}[1/2])$  where

$$A' = \begin{bmatrix} -1/2 & -1 & 1/2 \\ 1 & -1 & 1 \\ 1/2 & -1 & 3/2 \end{bmatrix}, \quad B' = \begin{bmatrix} 1/2 & -1 & -1/2 \\ 1 & 1 & 1 \\ 1/2 & 1 & 3/2 \end{bmatrix}.$$

The preimage of this group in  $SL_2(\mathbb{Z})$  under the spin homomorphism in (5.3) is the group  $\langle \pm X, \pm Y \rangle$  where

$$X = \begin{bmatrix} 1 & 1 \\ -1 & 0 \end{bmatrix}, \quad Y = \begin{bmatrix} 1 & 1 \\ 0 & 1 \end{bmatrix},$$

and  $YX^4, Y$  are a well-known generating set for all of  $SL_2(\mathbb{Z})$ . Hence  $H(\alpha, \beta)$  is itself arithmetic. In addition, our second strategy of finding a region which contains a fundamental domain for  $H$  yields the compact region shown in Figure 11.

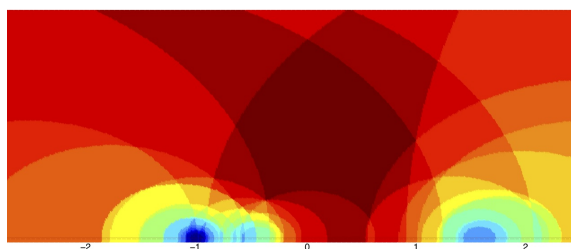


**Fig. 11.** Dark red region in the upper half-plane containing a fundamental domain of  $H(\alpha, \beta)$  in Example 4.

**Example 5:**  $\alpha = (\frac{1}{3}, \frac{1}{2}, \frac{2}{3}), \beta = (0, \frac{1}{4}, \frac{3}{4})$ . In this case  $H(\alpha, \beta) \subset O_f(\mathbb{Z})$  with generators  $A, B$  where

$$f = \begin{bmatrix} 5 & -1 & -7 \\ -1 & 5 & -1 \\ -7 & -1 & 5 \end{bmatrix}, \quad A = \begin{bmatrix} 0 & 0 & -1 \\ 1 & 0 & -2 \\ 0 & 1 & -2 \end{bmatrix}, \quad B = \begin{bmatrix} 0 & 0 & 1 \\ 1 & 0 & -1 \\ 0 & 1 & 1 \end{bmatrix}.$$

In this case  $f$  is anisotropic over  $\mathbb{Q}$ , and hence we turn to our strategy of approximating the fundamental domain to prove that  $H$  is arithmetic: we produce the compact region shown in Figure 12 which contains the fundamental domain of  $H$ .

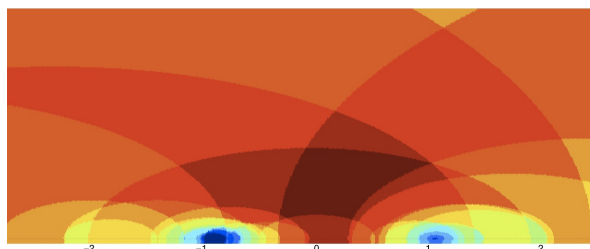


**Fig. 12.** Dark red region in the upper half-plane containing a fundamental domain of  $H(\alpha, \beta)$  in Example 5.

**Example 6:**  $\alpha = (\frac{1}{3}, \frac{1}{2}, \frac{2}{3})$ ,  $\beta = (0, \frac{1}{6}, \frac{5}{6})$ . In this case  $H(\alpha, \beta) \subset \mathcal{O}_f(\mathbb{Z})$  with generators  $A, B$  where

$$f = \begin{bmatrix} 1 & 0 & -2 \\ 0 & 1 & 0 \\ -2 & 0 & 1 \end{bmatrix}, \quad A = \begin{bmatrix} 0 & 0 & -1 \\ 1 & 0 & -2 \\ 0 & 1 & -2 \end{bmatrix}, \quad B = \begin{bmatrix} 0 & 0 & 1 \\ 1 & 0 & -2 \\ 0 & 1 & 2 \end{bmatrix}.$$

In this case  $f$  is anisotropic over  $\mathbb{Q}$ , and hence we turn to our strategy of approximating the fundamental domain to prove that  $H$  is arithmetic: we produce the compact region shown in Figure 13 which contains the fundamental domain of  $H$ .



**Fig. 13.** Dark red region in the upper half-plane containing a fundamental domain of  $H(\alpha, \beta)$  in Example 6.

*Acknowledgements.* We thank I. Capdeboscq, N. Katz, C. McMullen, V. Nikulin, I. Rivin, T. Venkataramana, and A. Wienhard for helpful discussions related to this paper.

The first author is supported by the Simons Foundation.

The third author is supported by an NSF grant.

## References

- [B-H] Beukers, F., Heckman, G.: Monodromy for hypergeometric function  ${}_nF_{n-1}$ . *Invent. Math.* **95**, 325–354 (1989) [Zbl 0663.30044](#) [MR 0974906](#)
- [B] Bober, J.: Integer ratios of factorials, hypergeometric functions, and related step functions. Ph.D. Thesis, Univ. of Michigan (2009) [MR 2713869](#)
- [B-T] Brav, C., Thomas, H.: Classical and derived monodromy of the quintic threefold. <http://people.maths.ox.ac.uk/brav/monodromy.pdf>
- [C] Cassels, J. W. S.: *Rational Quadratic Forms*. Dover Publ., Mineola, NY (1978) [Zbl 0395.10029](#) [MR 0522835](#)
- [C-S] Conway, J. H., Sloane, N. J. A.: *Sphere Packings, Lattices and Groups*. Springer (1998)
- [D] Dwork, B.:  $p$ -adic cycles. *Publ. IHES* **37**, 27–115 (1969) [Zbl 0284.14008](#) [MR 0294346](#)
- [E-G-M] Elstrodt, J., Grunewald, F., Mennicke, J.: *Groups Acting on Hyperbolic Space. Harmonic Analysis and Number Theory*. Springer Monogr. Math., Springer, Berlin (1998) [Zbl 0888.11001](#) [MR 1483315](#)
- [F] Fuchs, E.: The ubiquity of thin groups. In: *Proceedings of MSRI conference on Thin Groups and Super-strong Approximation*, to appear

- [L-P] Lax, P., Phillips, R.: The asymptotic distribution of lattice points in Euclidean and non-Euclidean spaces. *J. Funct. Anal.* **46**, 280–350 (1982) [Zbl 0497.30036](#) [MR 0661875](#)
- [L] Landau, E.: Sur les conditions de divisibilité d'un produit de factorielles par un autre. *Nouv. Ann. (3)* **19**, 344–362 (1900) [JFM 31.0183.05](#)
- [Le] Levelt, A. H. M.: Hypergeometric functions. Ph.D. Thesis, Univ. of Amsterdam (1961) [Zbl 0103.29502](#) [MR 0145108](#)
- [M] Margulis, G.: *Discrete Subgroups of Semi-Simple Lie Groups*. Springer (1991) [Zbl 0732.22008](#) [MR 1090825](#)
- [M-S] McKee, J., Smyth, C.: Single polynomials that correspond to pairs of cyclotomic polynomials with interlacing zeros. *Cent. Eur. J. Math.* **11**, 882–899 (2013) [Zbl 1272.11113](#) [MR 3032337](#)
- [N1] Nikulin, V.: On factor groups of the automorphism groups of hyperbolic forms modulo subgroups generated by 2-reflections. *Soviet Math. Dokl.* **20**, 1156–1158 (1979) [Zbl 0445.10020](#)
- [N2] Nikulin, V.: Self correspondences of  $K3$ -surfaces via moduli of sheaves and arithmetic hyperbolic reflection groups. *Proc. Steklov Inst. Math.* **273**, 229–237 (2011) [Zbl 1226.14053](#) [MR 2893549](#)
- [P] Park, Y.: Ph.D. Thesis, Princeton Univ. (2013)
- [Vill] Rodriguez-Villegas, F.: Hypergeometric families of Calabi–Yau manifolds. In: *Calabi–Yau Varieties and Mirror Symmetry* (Toronto, 2001), *Fields Inst. Comm.* 38, Amer. Math. Soc., 223–231 (2003) [Zbl 1062.11038](#) [MR 2019156](#)
- [S1] Sarnak, P.: Notes on thin matrix groups. [arXiv:1212.3525](#)
- [S2] Sarnak, P.: Reciprocal geodesics. In: *Analytic Number Theory* (Göttingen, 2005), *Clay Math. Proc.* 7, Amer. Math. Soc., 217–237 (2007) [Zbl 1198.11039](#) [MR 2362203](#)
- [S-V] Singh, S., Venkataramana, T. N.: Arithmeticity of certain symplectic hypergeometric groups. *Duke Math. J.* **163**, 591–617 (2014) [Zbl 1287.22005](#) [MR 3165424](#)
- [V] Venkataramana, T. N.: Arithmeticity of the braid group at roots of unity. [arXiv:1204.4778](#) (2012)
- [Vi1] Vinberg, E.: On groups of unit elements of certain quadratic forms. *Math. USSR-Sb.* **16**, no. 1, 17–35 (1972) [Zbl 0252.20054](#) [MR 0295193](#)
- [Vi2] Vinberg, E.: The absence of crystallographic reflection groups in Lobachevskii spaces of large dimension. *Trudy Moskov. Mat. Obsch.* **47**, 68–102 (1984) (in Russian) [Zbl 0593.22007](#) [MR 0774946](#)