

David Fisher · Jean-François Lafont · Nicholas Miller · Matthew Stover

Finiteness of maximal geodesic submanifolds in hyperbolic hybrids

Received October 8, 2018; revised July 18, 2019

Abstract. We show that large classes of non-arithmetic hyperbolic n -manifolds, including the hybrids introduced by Gromov and Piatetski-Shapiro and many of their generalizations, have only finitely many finite-volume immersed totally geodesic hypersurfaces. In higher codimension, we prove finiteness for geodesic submanifolds of dimension at least 2 that are *maximal*, i.e., not properly contained in a proper geodesic submanifold of the ambient n -manifold. The proof is a mix of structure theory for arithmetic groups, dynamics, and geometry in negative curvature.

Keywords. Hyperbolic manifolds, geodesic submanifolds, arithmeticity

1. Introduction

To simplify the discussion, throughout this introduction a hyperbolic manifold will mean a connected, oriented, complete, finite-volume hyperbolic n -manifold, and a geodesic submanifold will be a complete, immersed, finite-volume, totally geodesic subspace (note that a totally geodesic subspace need not be orientable). The main motivation of this paper is the following question which, as far as we know, has been asked independently by Reid and in dimension 3 by McMullen:

Question 1.1 ([13, Question 7.6]). Let M be a non-arithmetic hyperbolic manifold of dimension at least 3. Does M have at most finitely many geodesic submanifolds of codimension 1?

David Fisher: Department of Mathematics, Indiana University, Bloomington, IN 47405, USA; fisherdm@indiana.edu

Jean-François Lafont: Department of Mathematics, Ohio State University, Columbus, OH 43210 USA; jlafont@math.ohio-state.edu

Nicholas Miller: Department of Mathematics, University of California, Berkeley, CA 94720, USA; nimimill@math.berkeley.edu

Matthew Stover: Department of Mathematics, Temple University, Philadelphia, PA 19122, USA; mstover@temple.edu

Mathematics Subject Classification (2020): 20F67, 57N35

We will prove the answer is “yes” for a large class of non-arithmetic hyperbolic manifolds that includes the famous non-arithmetic manifolds constructed by Gromov and Piatetski-Shapiro [19]. We also prove more general results valid in arbitrary codimension $k < n - 1$, answering a more general question of Reid. Making a precise statement requires some more care and notation. Before embarking on that, we discuss some background and motivation for the conjecture.

Totally geodesic submanifolds of hyperbolic manifolds, when they exist, have proven fundamental in solving a number of important problems. Perhaps most famously, Gromov and Piatetski-Shapiro used cut-and-paste of arithmetic hyperbolic manifolds along codimension-1 geodesic submanifolds to build non-arithmetic hyperbolic manifolds in all dimensions [19]. More recently, variants on their construction first introduced in [1] were used by Gelander and Levit to prove that “most” hyperbolic manifolds in dimension at least 4 are non-arithmetic [17].

In another famous application, Millson used geodesic submanifolds to construct hyperbolic manifolds in all dimensions with positive 1st Betti number [30]. Millson’s examples are arithmetic, and a key idea in the proof is that if an arithmetic hyperbolic manifold contains a geodesic submanifold, then it contains many of them. One can see this as an easy application of the fact that the commensurator of an arithmetic group is dense in the isometry group of the associated symmetric space [8, Theorem 2]. In particular, density of the commensurator allows one to prove the following:

Arithmetic geodesic submanifold dichotomy. *For any $1 \leq k \leq n - 1$, an arithmetic hyperbolic n -manifold either contains no codimension- k geodesic submanifolds, or it contains infinitely many and they are everywhere dense.*

This was perhaps first made precise in dimension 3 by Maclachlan and Reid [22] and Reid [37], who exhibited the first hyperbolic 3-manifolds with no totally geodesic surfaces. (For non-arithmetic examples, see [9] for fibered knots with no totally geodesic surfaces.)

In the non-arithmetic setting, this commensurator argument is not available. A theorem of Margulis shows that an irreducible lattice Γ in an adjoint semisimple Lie group G is arithmetic if its commensurator is topologically dense in G . From this one deduces that if Γ is non-arithmetic, then its commensurator is itself a lattice that contains Γ with finite index [26, p. 2], and so Question 1.1 is reasonable. The simplest form of our main result is the following.

Theorem 1.2. *For every $n \geq 3$, there exist infinitely many commensurability classes of finite-volume non-arithmetic hyperbolic n -manifolds for which the collection of all codimension-1 finite-volume totally geodesic submanifolds is finite but nonempty.*

As we describe below, Theorem 1.2 applies in particular to the class of manifolds constructed by Gromov and Piatetski-Shapiro, along with many variants of their construction. In dimension $n \geq 4$, we do not know an example of a non-arithmetic hyperbolic n -manifold containing no codimension 1 geodesic submanifolds. Interestingly, finiteness results of this kind were only known previously for compact immersed totally geodesic surfaces in *infinite volume* hyperbolic 3-manifolds with compact convex core, by McMullen,

Mohammadi, and Oh [27, Theorem 1.4]. See very recent work of Benoist and Oh for the geometrically finite case [7, Theorem 1.5].

Even for finite-volume hyperbolic 3-manifolds, Theorem 1.2 is new and the first result of its kind on the question of McMullen and Reid. All previous arguments in that setting could only show finiteness of geodesic subsurfaces by showing there were none at all. In fact, we will show in Section 6.1 that explicit examples of hyperbolic links with a finite but nonempty set of totally geodesic surfaces are relatively easy to construct.

Theorem 1.3. *There are infinitely many distinct hyperbolic links L in the 3-sphere so that the collection of all finite-area totally geodesic surfaces in $S^3 \setminus L$ is finite but nonempty. The link complements can be chosen to be mutually incommensurable. One can choose L such that all its totally geodesic surfaces are noncompact.*

In short, our examples are *belted sums* of arithmetic links. See Section 6 for more on various examples and nonexamples, along with connections between our work and the Menasco–Reid conjecture [28].

As mentioned above, Theorem 1.2 is a special case of a more general theorem on geodesic submanifolds of arbitrary codimension. To state this result we require some more notation. A *building block* of a hyperbolic n -manifold M is a connected n -dimensional submanifold N with nonempty (but possibly disconnected) totally geodesic boundary such that $\pi_1(N) < \pi_1(M)$ is Zariski dense in $\text{Isom}^+(\mathbb{H}^n)$. In the finite-volume noncompact case, we require all cusps of N to be finite-volume.

We say a hyperbolic manifold M is *built from building blocks* when it is the union of finitely many building blocks with disjoint interiors, hence they intersect only along their boundaries. That is, M is obtained by gluing finitely many building blocks together isometrically along their boundaries. We call two such blocks *adjacent* if they meet in M along a common boundary component. We will frequently refer to any connected component of this common boundary as a *cutting hypersurface*.

We say that a building block $N \subset M$ is *arithmetic* when there exists an arithmetic hyperbolic n -manifold M' such that N is isometric to a building block for M' . We will see that, up to commensurability, M' is uniquely determined by N . In particular, it makes sense to say that two arithmetic building blocks are *similar* when they are building blocks for commensurable arithmetic manifolds and are *dissimilar* otherwise. We will also call a geodesic submanifold *maximal* if it is not contained in a proper geodesic submanifold of smaller codimension. Our main result is:

Theorem 1.4. *Let M be a non-arithmetic hyperbolic n -manifold built from building blocks for which there are two adjacent building blocks N_1 and N_2 that are arithmetic and dissimilar. For each $1 \leq k \leq n - 2$, the collection of all maximal codimension k finite-volume totally geodesic submanifolds of M is finite.*

Note that the word *maximal* in the theorem is necessary, since codimension k finite-volume totally geodesic submanifolds may be arithmetic and thus could contain infinitely many finite volume totally geodesic submanifolds of all greater codimensions. This occurs quite frequently in explicit constructions, particularly those built by Gromov and Piatetski-Shapiro.

Also note that the manifolds constructed by Gromov and Piatetski-Shapiro are built from two dissimilar buildings blocks (see Section 2.2), so Theorem 1.4 applies. The theorem also applies to the manifolds used to study invariant random subgroups in [1] and to those used by Raimbault [33] and Gelfand and Levit [17] in studying growth of the number of maximal lattices in $SO(n, 1)$. These lattices are all built from *subarithmetic pieces* in the language of Gromov and Piatetski-Shapiro [19, Question 0.4]. We state one immediate corollary of our result and the results of Gelfand–Levit more carefully:

Theorem 1.5. *Fix $n > 3$. Then there exists a number $b_n > 0$ such that the number of commensurability classes of hyperbolic manifolds satisfying the conclusions of Theorem 1.4 and having a representative of volume less than V is proportional to $V^{b_n V}$.*

As in Gelfand–Levit, it is possible to see from this that there are “more” manifolds satisfying the conclusions of Theorem 1.4 than there are arithmetic manifolds. In fact, the set of such manifolds has positive logarithmic density if one counts by minimal volume in the commensurability class.

We note here that our proofs do not apply to the class of hyperbolic manifolds built by inbreeding that were introduced by Agol [3] and developed further by Belolipetsky and Thomson [6]. Our approach depends at a key point on the adjacent pieces being associated with different arithmetic groups, and in this family of examples there is only one arithmetic group involved. In other words, in our terminology the building blocks used to construct the examples in [3] and [6] are similar, hence Theorem 1.4 does not apply.

The proof of Theorem 1.4 is a mix of structure theory for arithmetic groups, dynamics, and geometry in negative curvature.

Our proof involves three key ingredients. The first two are a pair of “rigidity” theorems for geodesic submanifolds of manifolds M satisfying the properties of Theorem 1.4. Each shows that geodesic submanifolds of M that meet both N_1 and N_2 must be of a very particular kind. The third ingredient consists of equidistribution results from homogeneous dynamics.

The first ingredient is “Closure Rigidity”, which we prove in Section 3. Given a geodesic submanifold Σ that crosses both N_1 and N_2 , we show that $\Sigma \cap N_i$ is actually the intersection with N_i of a geodesic submanifold in the finite volume arithmetic manifold from which N_i is cut. This is not true for geodesics, and in fact a generic geodesic in the examples we consider is built from pieces that do not close in the corresponding arithmetic manifold.

The second ingredient and rigidity result is “Angle Rigidity”, proven in Section 4. This says that once we know the closure rigidity results from Section 3, geodesic submanifolds must meet $N_1 \cap N_2$ orthogonally.

The last key ingredient in the proof is a generalization of Shah’s work on orbit closures in hyperbolic manifolds [40], which we prove in Section 5. This allows us to conclude that either the collection of codimension k geodesic submanifolds of M satisfies the conclusions of Theorem 1.4, or they determine a dense subset of the oriented orthonormal frame bundle of M . The combination of closure and angle rigidity forbids the second conclusion, hence the theorem follows.

There is some overlap of ideas between our paper and a recent paper of Benoist and Oh [7]. In fact, after we showed our paper to Oh, she pointed out that in dimension 3 one can prove our Theorem 1.2 using their Proposition 12.1 in place of our Theorem 4.1. The proof in their paper does not cover the examples needed for Theorem 1.3. See Remark 4.4 for the relation between our work and theirs.

We close with some discussion of the following famous question asked by Gromov and Piatetski-Shapiro.

Question 1.6 ([19, Question 0.4]). Call a discrete subgroup $\Gamma_0 < \mathrm{PO}(n, 1)$ *subarithmetic* if Γ_0 is Zariski dense and if there exists an arithmetic subgroup $\Gamma_1 < \mathrm{PO}(n, 1)$ such that $\Gamma_0 \cap \Gamma_1$ has finite index in Γ_0 . Does every lattice Γ in $\mathrm{PO}(n, 1)$ (maybe for large n) contain a subarithmetic subgroup? Is Γ generated by (finitely many) such subgroups? If so, does $V = \mathbb{H}^n / \Gamma$ admit a “nice” partition into “subarithmetic pieces”?

Manifolds built from arithmetic building blocks certainly admit a nice partition into subarithmetic pieces. In a different direction, in the 1960s Vinberg introduced the notion of a *quasi-arithmetic* lattice [42] (see Section 6.2). For example, many lattices acting on \mathbb{H}^n generated by reflections are quasi-arithmetic. However, the typical variants of Gromov and Piatetski-Shapiro’s construction of non-arithmetic lattices are not quasi-arithmetic, so Question 1.6 is well known to be more subtle than “are all non-arithmetic lattices iterations of the construction in [19]”.

A key step in the proof that the examples in [19] are non-arithmetic is the assumption that one interbreeds noncommensurable arithmetic manifolds. More recently, Agol [3] (for $n = 4$) and Belolipetsky and Thomson [6] (for $n \geq 4$) constructed non-arithmetic but quasi-arithmetic lattices by inbreeding commensurable arithmetic lattices. In particular, the existence of quasi-arithmetic lattices that are non-arithmetic does not rule out the possibility that all non-arithmetic lattices for $n \geq 4$ are constructed by inbreeding arithmetic lattices (there are hyperbolic 3-manifolds with no totally geodesic surfaces, which clearly are not constructed via interbreeding or inbreeding; see Example 6.3).

With the methods of the present paper, we are able to give examples of Coxeter polyhedra whose associated non-arithmetic lattices are not commensurable with either the Gromov–Piatetski-Shapiro-type lattices or the Agol-type lattices. See Section 6.2, where we will prove the following, which perhaps further clarifies the subtle nature of Question 1.6.

Theorem 1.7. *There exist non-arithmetic lattices in $\mathrm{SO}(5, 1)$ that are not commensurable with a lattice constructed by the methods of Gromov–Piatetski-Shapiro or Agol.*

The results in Section 6 also show that, despite the use of certain dynamical tools that make precise counting quite subtle, the methods developed in this paper can be used to study concrete examples. We also provide examples of Coxeter groups in dimension 3 that cannot come from a hybrid construction, and it is possible that one could use the ideas behind the proof of Theorem 1.7 to construct an explicit hyperbolic 3-manifold M containing exactly m totally geodesic surfaces for sufficiently large m . Recent work of Emery and Mila [15] also used Theorem 1.7 to motivate results on rational relations between volumes of odd-dimensional hyperbolic manifolds.

2. Background on constructions of hyperbolic n -manifolds

This section gives the necessary background on the constructions of hyperbolic n -manifolds that are relevant for this paper. It also establishes much of the notation that we will use throughout.

2.1. Arithmetic manifolds constructed from quadratic forms

Here we recall the construction of arithmetic hyperbolic manifolds via quadratic forms over number fields. Our standing assumption throughout will be that F is a totally real number field of degree s over \mathbb{Q} with distinct real embeddings $\sigma_1, \dots, \sigma_s : F \rightarrow \mathbb{R}$. To simplify our discussion, we assume that F is a subfield of \mathbb{R} under $\sigma_1 = \text{Id}$.

Now, let V be an F -vector space of dimension $n + 1$ and q a nondegenerate F -defined quadratic form on V . Such a pair (V, q) is called an F -quadratic space, and associated with q we have the inner product

$$\langle u, v \rangle_q = \frac{1}{2}(q(u + v) - q(u) - q(v)). \tag{2.1}$$

We then have the F -algebraic group $\text{SO}(q, F)$ consisting of those determinant-one linear transformations of V that preserve q . We use

$$V(\mathbb{R}) = V \otimes_F \mathbb{R} \cong \mathbb{R}^{n+1}$$

to denote the extension of V to a real vector space under our chosen real embedding of F , and q will denote the unique extension of q to a quadratic form on $V(\mathbb{R})$. For the nonidentity σ_i , q^{σ_i} will denote the extension of q to the real vector space $V \otimes_{\sigma_i(F)} \mathbb{R}$.

We assume throughout this paper that q has signature $(n, 1)$ on $V(\mathbb{R})$ and that q^{σ_i} is definite for all $i \neq 1$. Given this setup, there is a natural injection

$$i : \text{SO}(q, F) \hookrightarrow \prod_{i=1}^s \text{SO}(q^{\sigma_i}, \mathbb{R}) \cong \text{SO}(n, 1) \times \prod_{i=2}^s \text{SO}(n + 1),$$

sending $g \in \text{SO}(q, F)$ to

$$i(g) = (g, \sigma_2(g), \dots, \sigma_s(g)) \in \text{SO}(n, 1) \times \prod_{i=2}^s \text{SO}(n + 1).$$

In other words, we identify $g \in \text{SO}(q, F)$ with its image in $\text{SO}(n, 1)$ under projection onto the first factor of the above product.

Let \mathcal{O}_F denote the ring of integers of F . The above identifications map $\text{SO}(q, \mathcal{O}_F)$ to an arithmetic lattice Γ_q in $\text{SO}(n, 1)$. All arithmetic lattices in $\text{SO}(n, 1)$ considered in this paper will be commensurable with some Γ_q as above. We note that in even dimensions this construction determines every commensurability class of arithmetic lattices in $\text{SO}(n, 1)$.

Given a quadratic form q as above, we form the hyperboloid model of hyperbolic space associated with q by

$$\mathbb{H}_q^n = \{(x_1, \dots, x_{n+1}) \in \mathbb{R}^{n+1} : q(x_1, \dots, x_{n+1}) = -1, x_{n+1} > 0\}.$$

The inner product on \mathbb{R}^{n+1} defined by (2.1) determines the usual hyperbolic metric on \mathbb{H}_q^n . From here forward, when there is no possibility of confusion we will drop the subscript and identify \mathbb{H}_q^n with \mathbb{H}^n .

A finite-volume hyperbolic orbifold is given as a quotient of \mathbb{H}^n by a lattice Γ in $\text{Isom}(\mathbb{H}^n) \cong \text{PO}(n, 1)$. The group $\text{Isom}^+(\mathbb{H}^n)$ of orientation-preserving isometries is isomorphic to the connected component $\text{SO}_0(n, 1)$ of the identity in $\text{SO}(n, 1)$. If Γ is torsion-free, then \mathbb{H}^n/Γ is a manifold, and otherwise it is a hyperbolic orbifold. In particular, the arithmetic lattice Γ_q described above determines an arithmetic hyperbolic orbifold \mathbb{H}^n/Γ_q . Selberg’s lemma then implies that there is a finite index, torsion-free subgroup $\Gamma' < \Gamma$ and hence there is always an arithmetic hyperbolic manifold \mathbb{H}^n/Γ' that finitely covers \mathbb{H}^n/Γ .

For the reader’s convenience, we also state the commensurability classification for arithmetic hyperbolic manifolds arising from the above construction. See [19, Section 2.6] and [29] for further details.

Theorem 2.1. *Let Γ, Γ' be two arithmetic lattices in $\text{SO}(n, 1)$ constructed from quadratic spaces $(V, q), (V', q')$ over the number fields F, F' , respectively. Then Γ' is commensurable with Γ if and only if $F \cong F'$ and q' is similar to q , i.e., there exists $\lambda \in F^*$ such that (V', q') is isometric to $(V, \lambda q)$.*

We now briefly recall the construction of finite-volume codimension k immersed totally geodesic submanifolds of arithmetic hyperbolic manifolds arising from quadratic forms. Let Γ be an arithmetic lattice in $\text{Isom}(\mathbb{H}^n)$ associated with the quadratic space (V, q) over the number field F . Let $W \subset V$ be an (F -defined) codimension k subspace such that the restriction of q to W has signature $(n - k, 1)$ on $W(\mathbb{R})$. Then the intersection of $W(\mathbb{R})$ with $\mathbb{H}^n \subset V(\mathbb{R})$ defines a totally geodesic embedding $f : \mathbb{H}^{n-k} \hookrightarrow \mathbb{H}^n$. The induced embedding of $\text{SO}(W, q|_W)$ into $\text{SO}(V, q)$ yields an embedding

$$G_W = \text{S}(\text{O}(k) \times \text{O}(n - k, 1)) \cap \text{SO}_0(n, 1) \hookrightarrow \text{Isom}(\mathbb{H}^n)$$

such that $\Gamma_W = G_W \cap \Gamma$ is a lattice in G_W . In particular, $\mathbb{H}^{n-k}/\Gamma_W$ maps in as an immersed finite-volume totally geodesic submanifold of \mathbb{H}^n/Γ . Moreover, it is well known that all geodesic submanifolds of \mathbb{H}^n/Γ arise from the above construction (see [29]).

Remark 2.2. It is also known that arithmetic manifolds of the above kind are the only arithmetic manifolds that contain a codimension 1 finite volume totally geodesic submanifold. In particular, this means that the arithmetic manifolds described above are precisely those that can be used in the constructions of non-arithmetic manifolds that follow.

2.2. Constructions of non-arithmetic manifolds following Gromov and Piatetski-Shapiro

In this subsection, we recall the construction by Gromov and Piatetski-Shapiro of non-arithmetic hyperbolic manifolds [19], along with generalizations by Raimbault [33] and Gelfander and Levit [17].

First, we recall the notion of a *building block* and an *arithmetic building block* from the introduction. As previously, a hyperbolic manifold will always mean a connected and oriented quotient of hyperbolic space with finite-volume. If M is a hyperbolic n -manifold,

then a building block $N \subset M$ is an n -dimensional submanifold with nonempty totally geodesic boundary such that $\pi_1(N) < \pi_1(M)$ is Zariski dense in $\text{Isom}(\mathbb{H}^n)$ under the holonomy of the hyperbolic structure on M and such that all cusps of N have full rank. We call N arithmetic when M is an arithmetic hyperbolic manifold. The following is evident from [19, Example 1.6.A].

Proposition 2.3. *Suppose that M is an arithmetic hyperbolic manifold and $N \subset M$ is an arithmetic building block. If $N \subset M'$ for M' another arithmetic hyperbolic manifold, then M' is commensurable with M .*

In particular, if N_1 and N_2 are arithmetic building blocks with associated arithmetic hyperbolic manifolds M_1 and M_2 , it makes sense to say that they are *similar* if M_1 and M_2 are commensurable and *dissimilar* otherwise. We now return to constructing non-arithmetic hyperbolic manifolds.

The most basic Gromov–Piatetski-Shapiro construction is a hybrid manifold defined by interbreeding two incommensurable arithmetic hyperbolic manifolds. In our language, one builds a hyperbolic manifold consisting of two dissimilar arithmetic building blocks. Specifically, suppose that M_1 and M_2 are incommensurable arithmetic hyperbolic n -manifolds and that Σ is a hyperbolic $(n - 1)$ -manifold that admits totally geodesic embeddings $f_i : \Sigma \hookrightarrow M_i$, $i = 1, 2$. Suppose that $f_i(\Sigma)$ separates M_i , and choose one side N_i . This is then a hyperbolic manifold with connected totally geodesic boundary isometric to Σ , and N_i is an arithmetic building block in the sense described above. Gluing N_1 to N_2 along their boundaries then defines a non-arithmetic manifold comprised of two incommensurable arithmetic building blocks.

Further variants of this construction are given by Raimbault [33] and Gelander and Levit [17], who use a generalization of this idea to provide asymptotic counts on the number of hyperbolic manifolds in terms of volume. We describe the constructions so the reader can explicitly see that they satisfy the assumptions of Theorem 1.4.

Note that Raimbault’s variant of the Gromov–Piatetski-Shapiro construction glues together arithmetic building blocks in a circular pattern. More specifically, start with a family of r arithmetic building blocks N_1, \dots, N_r that are pairwise dissimilar and such that ∂N_j has two connected components, each being isometric to some fixed hyperbolic $(n - 1)$ -manifold Σ (with opposite orientations). Let Σ_j^+ (resp. Σ_j^-) denote the positively (resp. negatively) oriented boundary component. One then glues N_j to N_{j+1} by identifying Σ_j^+ to Σ_{j+1}^- , $1 \leq j \leq r - 1$, and N_r to N_1 by Σ_r^+ to Σ_1^- to obtain a non-arithmetic hyperbolic manifold built from r building blocks.

Gelander and Levit also construct large families of non-arithmetic manifolds, in which they start with any 4-regular and 2-colored graph G on k vertices such that every vertex has the same color except for one and such that each edge is given a label from the set $\{a, a^{-1}, b, b^{-1}\}$. They then form a graph of spaces where the vertex set V corresponds to two fixed arithmetic building blocks $\{V_0, V_1\}$ each with totally geodesic boundary with four connected components, each isometric to a fixed hyperbolic $(n - 1)$ -manifold Σ . Moreover, the edge set E corresponds to gluing together two of four arithmetic building blocks from a set $\{A^-, A^+, B^-, B^+\}$ each with totally geodesic boundary with two connected components, each also isometric to the same Σ as before (see [17, Remark 3.2])

for details). Provided the building blocks are dissimilar, this constructs a non-arithmetic hyperbolic manifold.

3. Closure rigidity

The purpose of this section is to show that any totally geodesic submanifold with boundary lying on a cutting hypersurface can be extended to a finite-volume totally geodesic submanifold of the arithmetic manifold associated with each of the adjacent building blocks.

Proving this will require the following lemma, whose statement requires a definition. Let M be a finite-volume cusped hyperbolic n -manifold. Then a geodesic σ in M is called a *cuspidal geodesic* if it is the image in M of a geodesic in $\widetilde{M} = \mathbb{H}^n$ connecting two parabolic fixed points for the action of $\pi_1(M)$ on \mathbb{H}^n . Also, we refer the reader to [34, Section 12.6] for details about the structure of cusps of hyperbolic manifolds.

Lemma 3.1. *Let M be a finite-volume hyperbolic n -manifold, let Σ be a finite-volume embedded totally geodesic hypersurface, and let N be a finite-volume immersed totally geodesic m -manifold, $m \geq 2$. Suppose N is not contained in Σ . Then $N \cap \Sigma$ is a union of complete hyperbolic $(m - 1)$ -manifolds. If either $m \geq 3$ or Σ is compact, then each element of this union has finite volume. If $m = 2$ and $N \cap \Sigma$ is not finite-volume, then it is a union of closed geodesics and cuspidal geodesics.*

Proof. Let M , Σ , and N be as in the statement of the lemma, and let $X = N \cap \Sigma$. This intersection is necessarily transverse, since N is not contained in Σ and for any $x \in \mathbb{H}^n$ there is a unique \mathbb{H}^ℓ tangent to any ℓ -plane in $T_x \mathbb{H}^n$. Being either complete or totally geodesic is preserved under intersections, so each connected component of X is a properly embedded complete immersed totally geodesic submanifold. If X is a union of compact components, it is clearly finite volume and we are done.

If X is not compact, then M necessarily has cusps, so we want to show that each component of X has cusps of full rank. In other words, we want to show that its cusps are finite-volume. Indeed, the intersection of X with the compact core of M is compact so this intersection clearly has finite volume. Cusp cross-sections of X are intersections of cusp cross-sections of N and Σ , which are closed flat $(m - 1)$ - and $(n - 2)$ -manifolds, respectively, naturally immersed inside a closed flat $(n - 1)$ -manifold cusp cross-section of M . In particular, this intersection is a closed flat $(m - 2)$ -manifold. When $m > 2$, we see that each cusp end is the product of a closed flat $(m - 2)$ -manifold with \mathbb{R}^+ . This has finite volume, and the lemma is proved in this case.

When $m = 2$, we are in the case where our component of X going out the cusp of M is a complete hyperbolic 1-manifold with cusps, i.e., a geodesic ray going out to the cusp. Since this component of X is complete, it extends in the other direction to a bi-infinite geodesic contained in $N \cap \Sigma$. We claim that the other end of this geodesic also goes to a cusp of M . To see this, notice that otherwise such a geodesic could not be properly embedded in M , but this is impossible for the intersection of two complete totally geodesic subspaces of M . In particular, we see that this component of X must be a cuspidal geodesic. This proves the lemma. ■

We will also need the following.

Lemma 3.2. *Let N be a finite volume hyperbolic m -manifold with nonempty totally geodesic boundary ∂N , and let N_1, \dots, N_k be the connected components of ∂N . If either*

- (1) *at least two components N_i have finite $(m - 1)$ -dimensional volume, or*
- (2) *at least one component N_i has finite $(m - 1)$ -dimensional volume and N does not deformation retract into that boundary component,*

then there exists an element $g \in \pi_1(N)$ that is not conjugate into any of the $\pi_1(N_i)$.

Proof. We will fix an isometric embedding of the universal cover \widetilde{N} into the ball model of \mathbb{H}^m . There is an isometric action of $\Delta = \pi_1(N)$ on \widetilde{N} , which we can extend to an isometric action on \mathbb{H}^m . The region \widetilde{N} inside \mathbb{H}^m has boundary consisting of a countably infinite collection of isometrically embedded copies of \mathbb{H}^{m-1} , each a lift of one of the boundary components N_i . We will call these the *boundary hyperplanes* of the region \widetilde{N} .

All the distinct boundary hyperplanes are pairwise disjoint inside \mathbb{H}^m , but can have closures inside $\mathbb{H}^m \cup \partial^\infty \mathbb{H}^m$ that intersect nontrivially. Note that the closures intersect nontrivially when the corresponding point at infinity comes from distinct cusps of ∂N that are asymptotic in N . Since we are in the ball model for \mathbb{H}^m , each of the boundary hyperplanes has a boundary at infinity which determines a round $(m - 2)$ -sphere inside the standard sphere $S^{m-1} = \partial^\infty \mathbb{H}^m$. We will call these the *boundary hyperspheres*. Observe that for any $\epsilon > 0$, there are only finitely many boundary hyperspheres of diameter greater than ϵ , measured in the round metric on S^{m-1} .

Let us consider case (1), and assume N_1, N_2 have finite volume. Note that the negative curvature assumption implies that N cannot be a cylinder. Each of the corresponding subgroups $\Delta_i = \pi_1(N_i)$ inside $\Delta = \pi_1(N)$ is nontrivial and contains an element acting hyperbolically on \widetilde{N}_i . Here we are viewing \widetilde{N}_i as a specific boundary hyperplane of the region \widetilde{N} . Let $\gamma_i \in \Delta_i$ be such an element and let $\gamma_i^\pm \subset S^{m-1} = \partial^\infty \mathbb{H}^m$ denote the two limit points of the geodesic determined by γ_i . Notice that this geodesic lies inside \widetilde{N}_i , so the pair of points γ_i^\pm lie on the boundary hypersphere $\partial^\infty \widetilde{N}_i$ inside S^{m-1} . Also, this geodesic is the lift of a closed geodesic in N_i , so the points γ_i^\pm do not correspond to cusp points in $\partial^\infty \widetilde{N}_i$, and hence cannot lie in any other boundary hyperspheres.

Let $\Lambda \subset S^{m-1}$ be the limit set for the Δ -action. The pair of distinct points γ_1^+, γ_2^+ lie in Λ and are a positive distance δ apart. Since they are disjoint, there are only finitely many boundary hyperspheres of diameter greater than $\frac{\delta}{3}$, so we can choose an $\epsilon < \frac{\delta}{3}$ with the property that the open ϵ -balls $B_i \subset S^{m-1}$ centered at γ_i^+ do not intersect this finite collection of boundary hyperspheres, except potentially $\partial^\infty \widetilde{N}_1$ and $\partial^\infty \widetilde{N}_2$. Then $B_1 \cap \Lambda$ and $B_2 \cap \Lambda$ are a pair of disjoint open subsets in the limit set Λ , so by [18, Section 8.2F-G], there exists a hyperbolic element $g \in \Delta$ with $g^+ \in B_1$ and $g^- \in B_2$. From our choice of ϵ , the pair of points g^\pm cannot lie on any single boundary hypersphere. This implies that the element g cannot be conjugated into any $\pi_1(N_i)$, as desired.

Now let us consider case (2), and assume N_1 has finite volume and N does not deformation retract into N_1 . Since N and N_1 are aspherical, this implies that there exists an $h \in \pi_1(N) \setminus \pi_1(N_1)$. We now consider the two distinct boundary hyperplanes \widetilde{N}_1 and $h\widetilde{N}_1$. Since N_1 has finite volume, we can pick a hyperbolic element $g_1 \in \pi_1(N_1)$,

and then define another hyperbolic element $g_2 = hg_1h^{-1}$. These stabilize the boundary hyperplanes \widetilde{N}_1 and $h\widetilde{N}_1$, respectively, so we obtain pairs of limit points $g_1^\pm \in \partial^\infty \widetilde{N}_1$ and $g_2^\pm \in \partial^\infty(h\widetilde{N}_1)$ in the corresponding boundary hyperspheres. We can then proceed as in case (1) to produce the desired element g , and this completes the proof of the lemma. ■

We are now ready to state and prove the main result of this section.

Theorem 3.3 (Closure Rigidity). *Let $M = \mathbb{H}^n/\Gamma$ be an arithmetic hyperbolic n -manifold, $n \geq 3$, let $\pi : \mathbb{H}^n \rightarrow M$ be the universal covering, and let $\Sigma = \mathbb{H}^{n-1}/\Gamma_0 \subset M$ be an embedded oriented finite volume totally geodesic hypersurface. For a fixed m with $1 < m \leq n - 1$, suppose that $f : \mathbb{H}^m \rightarrow \mathbb{H}^n$ is a totally geodesic embedding such that the image $(\pi \circ f)(\mathbb{H}^m) \subset M$ contains a connected finite-volume m -manifold N with totally geodesic boundary such that $\partial N \cap \Sigma \neq \emptyset$. Further, suppose that N does not deformation retract into Σ . Then $(\pi \circ f)(\mathbb{H}^m)$ is an immersed finite-volume totally geodesic submanifold of M of dimension m .*

Proof. Since M contains a finite volume hypersurface, we have that M is defined by a quadratic form q on the vector space V defined over a number field F and Σ comes from an F -defined codimension 1 subspace $V_0 \subset V$. It will be convenient to set $k = n - m$ as the codimension of $f(\mathbb{H}^m)$ in \mathbb{H}^n .

If Σ is nonseparating, then let M_1 be M cut open along Σ and otherwise suppose that Σ divides M into two submanifolds with boundary $M_1 \cup M_2$, $\partial M_1 = \partial M_2 = \Sigma$. Set $\Gamma_i = \pi_1(M_i)$ and $\Gamma_0 = \pi_1(\Sigma)$, considered as a subgroup of Γ . Without loss of generality, we can assume that $N \subset M_1$. Indeed, if every component of $N \cap M_1$ and $N \cap M_2$ deformation retracts into Σ , then N itself would deformation retract into Σ , hence up to relabeling we can assume that $N \cap M_1$ contains a component that does not retract into Σ . Then ∂N contains a nonempty union N_1, \dots, N_r of immersed totally geodesic submanifolds of Σ (note that the N_i might intersect if N is not embedded).

We first consider the case where the N_i satisfy either (1) or (2) in Lemma 3.2. Note that this is always the case when $m > 2$. Let $\Delta = \pi_1(N) \subset \Gamma_1$ and $\Delta_i = \pi_1(N_i) \subset \Gamma_0$. After reordering the boundary components, we can assume that $\pi_1(N_1)$ is nontrivial. Lemma 3.2 implies that there is some $g \in \Delta$ that is not Δ -conjugate into some Δ_i (i.e., does not deformation retract into Σ). For example, this is necessarily the case when N has a unique boundary component, since N cannot deformation retract into Σ (see Figure 1). Recall from the proof of Lemma 3.2 that N cannot be a cylinder. We now need some arithmetic notation.

Since N_1 is a finite-volume totally geodesic submanifold of Σ , it is associated with an F -defined subspace $V_1 \subset V_0$ of codimension k . Similarly, associated with $f : \mathbb{H}^m \rightarrow \mathbb{H}^n$ is a codimension k subspace $W(\mathbb{R}) \subset V(\mathbb{R})$ with the property that $V_1(\mathbb{R}) \subset W(\mathbb{R})$. It follows that $W(\mathbb{R})$ is a Δ -invariant subspace of $V(\mathbb{R})$, since the image of f contains a lift of the map on universal coverings $\widetilde{N} \rightarrow \widetilde{M}_1$. In fact, there exists a vector $w \in V(\mathbb{R})$ so that $W(\mathbb{R})$ is spanned by w and $V_1(F)$. We will show that we can take $w \in V(F)$, hence W is an F -defined subspace of V and $(\pi \circ f)(\mathbb{H}^m)$ then must determine an immersed finite-volume totally geodesic submanifold of M .

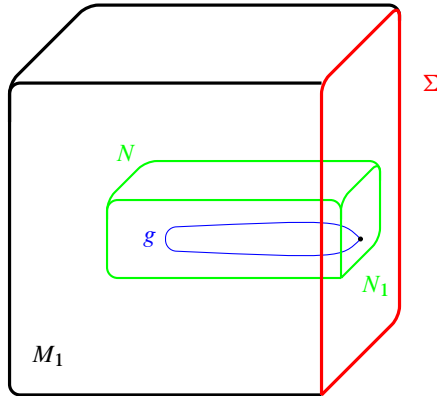


Fig. 1. The case when N has one boundary component.

We have $g(W(\mathbb{R})) = W(\mathbb{R})$, but $g(V_1(\mathbb{R})) \neq V_1(\mathbb{R})$, since g is not contained in Γ_0 . However, the fact that $g \in \Gamma_1$ implies $g(V(F)) = V(F)$. In particular, $g(V_1(F)) \subset W(\mathbb{R})$ contains a vector $v \in V(F)$ that is not contained in $V_1(\mathbb{R})$. Therefore, the F -span of $V_1(F)$ and v is a codimension 1 subspace of $V(F)$ contained in $W(\mathbb{R})$. Thus W is defined over F as claimed. This completes the proof when the N_i satisfy either (1) or (2) in Lemma 3.2.

By Lemma 3.1, what remains is the case where $m = 2$ and $N \cap \Sigma$ is a finite union of closed geodesics and cusp-to-cusp geodesics. (Lemma 3.2 actually allows us to reduce to the case where $N \cap \Sigma$ contains at most one closed geodesic, but this is not needed in what follows.)

Let σ and τ be two of the boundary components of N . Each is either a closed geodesic in M , or a cusp-to-cusp geodesic. Choose a lift of Σ to $\tilde{\Sigma} = \mathbb{H}^{n-1} \subset \mathbb{H}^n$. We then have a lift of N to \mathbb{H}^n that we can complete to $\tilde{N} = \mathbb{H}^2 \subset \mathbb{H}^n$ such that $\tilde{N} \cap \tilde{\Sigma}$ is a geodesic $\tilde{\sigma}$ lifting σ . Associated with $\tilde{\Sigma}$ is a subspace $V_0 \subset V$ of codimension 1 on which the restriction of q has signature $(n - 1, 1)$.

First, suppose that σ is a cusp-to-cusp geodesic. Then $\tilde{\sigma}$ is a geodesic connecting two cusp points $z_1, z_2 \in \partial^\infty \mathbb{H}^n$ for the action of Γ . Each z_i is determined by a unique F -defined isotropic line $L_i \subset V$. Let Y be the plane in V spanned over F by these two lines. Since G has \mathbb{Q} -rank one, there cannot be q -orthogonal isotropic lines in V , hence the restriction of q to Y^\perp is definite. Having dimension $n - 1$, we see that q is positive definite on Y^\perp , and hence q has signature $(1, 1)$ on Y (for the chosen embedding of F in \mathbb{R}). This subspace of $V(\mathbb{R})$ is associated with the geodesic in \mathbb{H}^n connecting the two ideal points z_1 and z_2 . Note that $Y \subset V_0$.

When σ is a closed geodesic, we similarly obtain an F -defined subspace Y on which q has signature $(1, 1)$ associated with the lift $\tilde{\sigma}$. Our choice of lift to \tilde{M} determines a unique cyclic subgroup C in the conjugacy class of cyclic subgroups of Γ associated with the geodesic σ . Then C preserves an F -defined q -orthogonal splitting of V into $Y \subset V_0$ and Y^\perp having the same properties as in the previous case.

Now, consider the lift $\tilde{\tau}$ of τ to \widehat{N} . The same arguments as above show that this determines two F -defined and q -orthogonal subspaces Z and Z^\perp such that the restriction of q to Z has signature $(1, 1)$. However, since $\tilde{\tau}$ is not contained in $\widehat{\Sigma}$ for this choice of lifts, we see that Z is not a subspace of V_0 .

Now, let U be the subspace of V spanned over F by Y and Z . Since $\tilde{\sigma}$ and $\tilde{\tau}$ both lie in \widehat{N} , i.e., the same embedded \mathbb{H}^2 in \mathbb{H}^n , it follows that U is 3-dimensional and that the restriction of q to U has signature $(2, 1)$. Since U is F -defined, we see that there is an arithmetic subgroup of Γ acting on \widehat{N} with finite-volume quotient. This completes the proof of the theorem in this case. ■

Remark 3.4. The assumption that $1 < m$ is critical. Indeed, in the case where N is a geodesic arc in M_1 connecting two distinct points in Σ , the proof completely falls apart in that N and ∂N have trivial fundamental group. However, the first step of the proof does work in the following sense. Suppose that Γ is an arithmetic Kleinian group that contains arithmetic Fuchsian subgroups. If γ_1, γ_2 are two purely hyperbolic elements of Γ that mutually preserve a totally geodesic hyperbolic plane in \mathbb{H}^3 , then $\langle \gamma_1, \gamma_2 \rangle$ is contained in an arithmetic Fuchsian subgroup of Γ .

Remark 3.5. We note that the proof required extra care in the case $m = 2$ with N non-compact. For example, one is faced with the possibility that N is an ideal polygon meeting Σ along its sides. In this case, there is no fundamental group for N or ∂N , but the cusp-to-cusp geodesics still carry sufficient arithmetic data for us to conclude that N is contained in a totally geodesic surface.

4. Angle rigidity

In this section we prove the following.

Theorem 4.1 (Angle Rigidity). *Fix a non-arithmetic hyperbolic manifold M that is built from building blocks, and suppose that two adjacent building blocks N_1 and N_2 are arithmetic and dissimilar. Let $A \subset M$ be a connected finite-volume immersed totally geodesic submanifold of dimension at least 2 such that A intersects the interior of N_1 and N_2 , i.e., crosses a cutting hypersurface Σ . Then A meets Σ orthogonally.*

As remarked in the introduction, a special case of this result was recently and independently obtained in [7].

Proof. The basic idea of the proof is as follows. Each N_i is associated with an arithmetic manifold M_i . That the M_i share isometric codimension 1 submanifolds allows us to assume they are defined via quadratic forms over the same field F [29, Section 6]. Closure Rigidity allows us to assume that A is built from gluing submanifolds A_i of N_i , where $A_i = N_i \cap B_i$ for B_i a finite-volume immersed totally geodesic submanifold of M_i . We will show when M_1 is not commensurable with M_2 that such a matching can only occur when the B_i meet Σ orthogonally. See Figure 2. The key point is that such submanifolds B_i arise from certain F -defined subspaces of the F -vector space for M_i , but the identification between half-spaces in \mathbb{H}^n arising from gluing N_2 to N_1 is defined

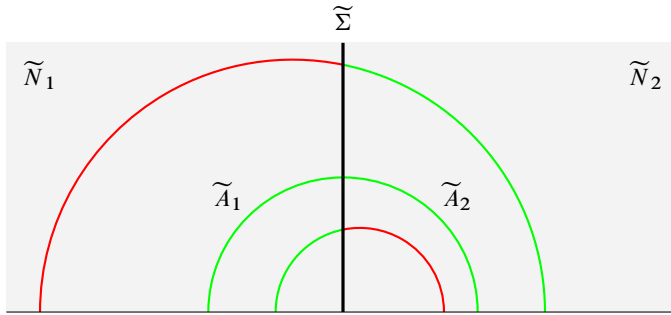


Fig. 2. The proof of Angle Rigidity. Subspaces of \tilde{N}_i associated with geodesic subspaces of M_i (green) are matched only if they meet Σ orthogonally.

by a map of real vector spaces that preserves definition over F only for very special subspaces.

We first carefully explain why Closure Rigidity applies. Set $A_i = N_i \cap A \subset M_i$. This defines an immersed totally geodesic submanifold of M_i with totally geodesic boundary that meets the cutting hypersurface Σ nontrivially. If $f_i : \mathbb{H}^m \hookrightarrow \mathbb{H}^n$ denotes the extension to \mathbb{H}^m of the lift $A_i \rightarrow \tilde{M}_i$, we see that \tilde{A}_i satisfies the assumptions of Theorem 3.3. The existence of the totally geodesic submanifold B_i as above follows.

Next we set up some notation and make some simplifying assumptions. Suppose that N_1 and N_2 are dissimilar arithmetic building blocks glued together by an orientation-reversing isometry of the connected totally geodesic boundary component Σ . Being arithmetic, each N_i has an associated quadratic space (V_i, q_i) , which is well defined up to similarity. The isometry $\varphi : \Sigma \rightarrow \Sigma$ determines a similarity between codimension 1 subspaces H_i of V_i on which the restriction of q_i has signature $(n - 1, 1)$. We can change the similarity class of q_2 and assume that the similarity $H_2 \rightarrow H_1$ is an isometry.

Therefore, we can assume there is a quadratic space (H, q) of dimension n and signature $(n - 1, 1)$ that is isometric to a codimension 1 subspace of each (V_i, q_i) . Using Gram–Schmidt, we can write

$$(V_i, q_i) = (V_i, \langle \alpha_i \rangle \oplus q),$$

for some $\alpha_i \in F^*$. More specifically, we can choose coordinates $\{x_0, \dots, x_n\}$ on V_1 and $\{y_0, \dots, y_n\}$ on V_2 such that

$$\begin{aligned} q_1(x_0, \dots, x_n) &= \alpha_1 x_0^2 + q(x_1, \dots, x_n), \\ q_2(y_0, \dots, y_n) &= \alpha_2 y_0^2 + q(y_1, \dots, y_n). \end{aligned}$$

The isometry between the models $\mathbb{H}_{q_i}^n$ of hyperbolic space associated with q_2 and q_1 is then induced by the map $V_2(\mathbb{R}) \rightarrow V_1(\mathbb{R})$ defined by $y_0 \mapsto \sqrt{\alpha_2/\alpha_1} x_0$ and $y_i \mapsto x_i$ for $1 \leq i \leq n$ (compare with [19, Section 2.9]). Let Φ denote this map, and note that Φ determines a map of F -vector spaces $V_2 \rightarrow V_1$ if and only if α_2/α_1 is a square in F^* . By Witt cancellation, this holds if and only if q_1 is isometric to q_2 , which is definitely not the case if M_1 and M_2 are noncommensurable.

Consider a codimension k totally geodesic submanifold B_i of the arithmetic manifold M_i associated with q_i . Then B_i arises from a codimension k subspace W_i of the F -vector space V_i on which the restriction of q_i has signature $(n - k, 1)$. Furthermore, suppose that the intersection of B_i with Σ contains a codimension k totally geodesic submanifold of Σ . Then, for the correct choice of base point, W_i intersects H in a codimension- k subspace U_i of H on which the restriction has signature $(n - k - 1, 1)$. Thus W_i is generated by U_i and a vector not in H .

Turning this around, we can construct all the submanifolds B_i as above by starting with a codimension k subspace U_i of H then taking the subspace of V_i generated by U_i and another vector ξ_i that is not contained in H . Note that ξ_i is not in H if and only if $y_0 \neq 0$. Let W_i be the span over F of ξ_i and U_i . To have \tilde{B}_1 glue to \tilde{B}_2 means precisely that Φ takes $W_2(\mathbb{R})$ to $W_1(\mathbb{R})$.

Notice that $\Phi(U_2) = U_1$, since $\Phi(H) = H$. If ξ_2 has coordinates y_i , then

$$\Phi(\xi_2) = \left(\sqrt{\frac{\alpha_2}{\alpha_1}} y_0, y_1, \dots, y_n \right) \in V_1(\mathbb{R}).$$

If α_2/α_1 fails to be a square in F^* , we see that $\Phi(W_2(\mathbb{R}))$ is $W_1(\mathbb{R})$ for W_1 an F -defined subspace of V_1 if and only if $y_1 = \dots = y_n = 0$. This proves that such an F -defined subspace of V_2 maps to an F -defined subspace of V_1 if and only if $W_i(\mathbb{R})$ is the \mathbb{R} -span of U_i and the vector $(1, 0, \dots, 0)$. The same argument shows that this again holds with the roles of V_1 and V_2 reversed.

Geometrically, this proves that the submanifolds B_i of M_i that could possibly give rise to A as in the statement of the theorem are associated with subspaces W_i of V_i generated by a codimension 1 subspace U_i of H along with the vector $(1, 0, \dots, 0)$. It remains to compute that such a B_i intersects Σ orthogonally.

The subspace of V_i associated with the hypersurface Σ is the q_i -orthogonal complement to $e = (1, 0, \dots, 0)$. The subspace associated with B_i is the orthogonal complement W_i to a subspace Z_i of V_i with dimension k . Since $(1, 0, \dots, 0) \in W_i$, it follows that Z_i must be a subspace of H . However, the angle θ_i between B_i and Σ satisfies

$$\cos^2 \theta_i = \sup_{z \in Z_i} \frac{\langle e, z \rangle_{q_i}^2}{q_i(e)q_i(z)}.$$

See [34, p. 71]. Since $Z_i \subseteq H$, it follows that z is q_i -orthogonal to e for all $z \in Z_i$, and we see that the above expression is identically zero. This shows that B_i meets Σ orthogonally, as desired. ■

Remark 4.2. Note that the proof of Theorem 4.1 does not appear to use the assumption that A has dimension at least two. In fact, the use of this hypothesis is hiding in our application of Closure Rigidity, in the very first step of the proof. Indeed, Closure Rigidity fails when A is a geodesic; see Remark 3.4.

Remark 4.3. With a bit more work, one can show that this approach proves a stronger result. Suppose M_1 and M_2 are arithmetic hyperbolic n -manifolds containing an isometric totally geodesic hypersurface Σ . Suppose that there is a further totally geodesic subspace $Z_0 \subset \Sigma$ of codimension $1 \leq k < n - 1$ and a codimension k totally geodesic submani-

fold N_i of M_i that meets Σ at Z_0 with angle θ_i . If $\theta_2 = \pm\theta_1$, then M_2 is commensurable with M_1 . One uses the above decomposition of q_1 and q_2 to directly build an isometry between the quadratic spaces.

Remark 4.4. We now discuss the similarities and differences between our work and the work of Benoist and Oh [7], in particular with regard to the proofs of Theorem 1.2 in dimension 3. The angle calculation at the end of the proof of Theorem 4.1 specializes in dimension 3 to be almost identical to their Lemma 12.2 and Corollary 12.3. Corollary 12.3 is then used in exactly the same way in the proof of their Proposition 12.1 as our observation is used in our proof of Theorem 4.1. While there are superficial similarities, the rest of the proofs are in fact substantially different. In most cases of our proof of Theorem 3.3, we use geometric techniques to prove that a connected component of the intersection of a totally geodesic submanifold with an arithmetic building block has non-elementary fundamental group and hence is arithmetically defined. This appears similar to the use of [7, Theorem 11.8] in their proof of [7, Proposition 12.1], but in fact the groups considered are different. They consider the stabilizer of an entire geodesic plane in the infinite cover of the arithmetic manifold corresponding to the fundamental group of the building block and use dynamics of unipotent flows to show this group is non-elementary. The group they consider always contains the group we consider. This difference is most striking in those special cases where the object we consider may have no fundamental group while they prove the object they consider always has non-elementary fundamental group. The proof of [7, Proposition 12.1] in that paper only covers the case of three manifolds built by gluing along cocompact cutting surfaces.

5. Equidistribution, homogeneous dynamics, and proofs of the main theorems

In this section, we complete the proof of Theorem 1.4. We will first give some geometric reductions in Section 5.1 that recast the problem as a dynamical one. For the reader's convenience, we then give a simple proof in Section 5.2 in the special case of closed hypersurfaces in compact manifolds. We then go on to give a proof of the general form of Theorem 1.4, first in the cocompact case in Section 5.3, and finally in the finite-volume case in Section 5.4.

5.1. Some geometric preliminaries

For a Riemannian manifold M , we denote by $\text{OF}(M)$ the bundle of *oriented* orthonormal frames on M and for any $1 \leq m \leq n$ we denote by $G^m M$ the bundle over M whose fiber over a point p is the Grassmannian of m -dimensional subspaces in $T_p M$. For each m , there is a natural bundle map $\text{OF}(M) \rightarrow G^m M$ obtained by sending an orthonormal frame (v_1, \dots, v_n) at a point p to the m -dimensional subspace spanned by v_1, \dots, v_m . The fiber of the bundle map $\text{OF}(M) \rightarrow G^m M$ can naturally be identified with

$$S(\text{O}(m) \times \text{O}(n - m)) = \{(A, B) \in \text{O}(m) \times \text{O}(n - m) : \det(A) \det(B) = 1\}.$$

An immersion $N \rightarrow M$ with $\dim(N) = m$ induces a map $G^m N \rightarrow G^m M$.

We now spend the rest of this subsection proving the following proposition.

Proposition 5.1. *Let M be an n -dimensional hyperbolic manifold built from building blocks containing two adjacent, arithmetic, and dissimilar building blocks. Then for any $2 \leq m < n$ there is an open subset $\Omega_m \subseteq G^m M$ such that $G^m N \cap \Omega_m = \emptyset$ for any finite-volume immersed totally geodesic submanifold $N \subset M$ of dimension m .*

Proof. Fix $m \geq 2$. By assumption, there is a totally geodesic cutting hypersurface $\Sigma \subset M$ contained in the common boundary of the arithmetic building blocks. As we know from Theorem 4.1, any closed immersed totally geodesic m -dimensional submanifold $N \rightarrow M$ intersects Σ orthogonally. That the submanifold N intersects Σ orthogonally means that $(T_x N)^\perp \subseteq T_x \Sigma$ for every $x \in N \cap \Sigma$ (note that this condition is in fact symmetric).

Choose a compact core C for M (see [24, p. 156]). Since $\Sigma \cap C$ is a smoothly embedded compact codimension 1 submanifold in M , there is a small enough δ so that the exponential map, defined on the δ -neighborhood of the zero section of the normal bundle to $\Sigma \cap C \subset M$, gives a diffeomorphism from $(\Sigma \cap C) \times (-\delta, \delta)$ into a subset of M . For a subset $S \subset \Sigma \cap C$, denote by \widehat{S} the image of $S \times (-\delta, \delta)$ under this exponential map. For all points p inside \widehat{S} , there is a unique minimal length geodesic γ_p from p to $\Sigma \cap C$, which will have length $< \delta$, and will terminate at a point on S . Now pick x in the interior of $\Sigma \cap C$, and fix a small open metric neighborhood U of x in $\Sigma \cap C$, of radius smaller than the distance from x to ∂C .

We form the subset

$$\mathcal{V} = \{(p, W) \in G^m M : p \in \widehat{U}, \dot{\gamma}_p \in W\},$$

and denote by \mathcal{V}_p the subset of \mathcal{V} lying above a point $p \in \widehat{U}$. Note that $\mathcal{V} \rightarrow \widehat{U}$ is a fiber bundle over an open subset of M with fiber \mathcal{V}_p a closed subset of the corresponding Grassmannian fiber of $G^m M$. Indeed, \mathcal{V}_p is a copy of $\text{Gr}(m - 1, \mathbb{R}^{n-1})$ lying within the $\text{Gr}(m, \mathbb{R}^n)$ fiber of $G^m M$.

Take a geodesic γ in \mathbb{H}^2 , a point A at distance $\frac{\delta}{2}$ from γ , and let B denote the projection of A onto γ . Set $0 < \epsilon_0 < \frac{\pi}{2}$ to be the angle between the geodesic \overline{AB} from A to B and the geodesic ray α from A to one of the endpoints of γ on $\partial^\infty \mathbb{H}^2$. See Figure 3. In particular, notice that any geodesic arc in \mathbb{H}^2 starting at A with initial angle $0 < \epsilon < \epsilon_0$ with \overline{AB} then must intersect γ in \mathbb{H}^2 .

Take $0 < \epsilon < \epsilon_0$, and consider the set $N_\epsilon(\mathcal{V})$ defined by taking the fiber-wise ϵ -neighborhood of the set \mathcal{V} , measured in the angular metric on the Grassmannian. Thus a pair (p, W) lies in $N_\epsilon(\mathcal{V})$ if and only if $p \in \widehat{U}$ and there is a $W' \in \mathcal{V}_p$ such that $\theta(W, W') < \epsilon$. Finally, we let

$$\Omega_m = N_\epsilon(\mathcal{V}) \setminus \mathcal{V},$$

and note that Ω_m is an open subset of $G^m M$.

We now check that $G^m N \cap \Omega_m = \emptyset$ for any finite-volume immersed m -dimensional totally geodesic submanifold N of M . By way of contradiction, assume that there exists a point $(p, W) \in G^m N \cap \Omega_m$. Since the submanifold N has dimension m , this means that $p \in N$, $W = T_p N \subset T_p M$, and $0 < \theta(W, \mathcal{V}_p) < \epsilon$. This last inequality tells us that $0 < \theta(W, \dot{\gamma}_p) < \epsilon$, where γ_p is the unique geodesic from $p \in \widehat{U}$ to $U \subset \Sigma$.

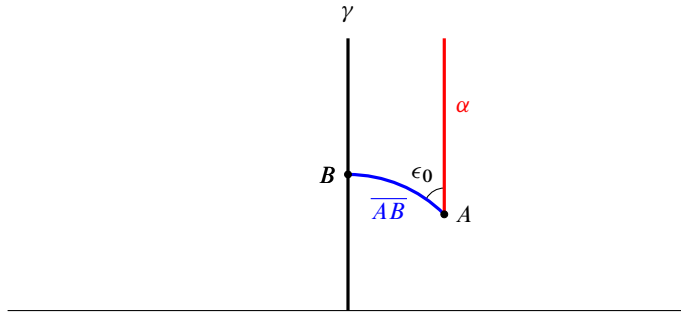


Fig. 3. Choosing ϵ_0 in the proof of Proposition 5.1.

We let $w \in W$ denote the projection of the vector $\dot{\gamma}_p$ to $T_p N$, and consider the subspace $Z = \text{span}\{w, \dot{\gamma}_p\}$ of $T_p M$. We have that $\dim(Z \cap T_p N) = \dim(Z \cap W) = 1$, and hence Z defines a (not necessarily closed) geodesic η contained in the submanifold N . It also contains the direction vector $\dot{\gamma}_p$ corresponding to the minimal geodesic from p to Σ . Moreover, we have that

$$z = \dot{\gamma}_p - w \in (T_p N)^\perp$$

is a nonzero vector, hence $\dim(Z \cap (T_p N)^\perp) = 1$.

The 2-dimensional subspace Z gives rise to an isometric immersion $f : \mathbb{H}^2 \rightarrow M$ whose image contains both geodesics γ_p and η . We let q denote the terminal point of γ_p in the open subset U of the hypersurface Σ . Since $\theta(\dot{\gamma}_p, \dot{\eta}) = \theta(\dot{\gamma}_p, w) < \epsilon$, our choice of $\epsilon < \epsilon_0$ implies that the geodesic η intersects Σ at a point q' . Since $\dot{\eta} \in T_p N$, we see that η is contained entirely in the submanifold N , and hence that $q' \in N \cap \Sigma$.

Notice that we now have a geodesic triangle contained in the isometrically immersed hyperbolic plane $f(\mathbb{H}^2)$, consisting of the geodesic segment γ_p , the geodesic segment η , and the geodesic ξ joining the two endpoints $q, q' \in \Sigma$. See Figure 4. Since Σ is totally geodesic, we see that ξ is contained entirely in Σ , and basic hyperbolic trigonometry implies that $\theta_{q'}(\eta, \xi) < \frac{\pi}{2}$, since $\theta_q(\xi, \gamma_p) = \frac{\pi}{2}$.

We claim that the submanifold N fails to be orthogonal to Σ at the point q' . To see this, we need to exhibit a vector in $(T_{q'} N)^\perp$ that does not lie in the subspace $T_{q'} \Sigma$. Recall that $z \in Z$ was a vector orthogonal to $T_p N$, and tangent to the immersed totally geodesic hyperbolic plane $f(\mathbb{H}^2)$. We can thus parallel transport this orthogonal vector along $\eta \subset N$ to obtain a vector $z' \in T_{q'} M$. Since parallel transport preserves orthogonality, we see that $z' \in (T_{q'} N)^\perp$. Also, $z \in T_p f(\mathbb{H}^2)$, and η is contained in $f(\mathbb{H}^2)$, which forces $z' \in T_{q'} f(\mathbb{H}^2)$. Since we have $z \perp \dot{\eta}(p)$, it follows that $z' \perp \dot{\eta}(q')$.

Finally, focusing on the behavior at $T_{q'} M$, we have three vectors that all lie in the 2-dimensional subspace $T_{q'} f(\mathbb{H}^2) \subset T_{q'} M$: the vector $\dot{\xi}$, which spans the 1-dimensional subspace

$$T_{q'} f(\mathbb{H}^2) \cap T_{q'} \Sigma,$$

the vector $\dot{\eta}$, which we argued forms an angle $\theta_{q'}(\dot{\eta}, \dot{\xi}) < \frac{\pi}{2}$ with $\dot{\xi}$, and the vector $z' \in (T_{q'} N)^\perp$ that is orthogonal to $\dot{\eta}$. It immediately follows that z' cannot be parallel

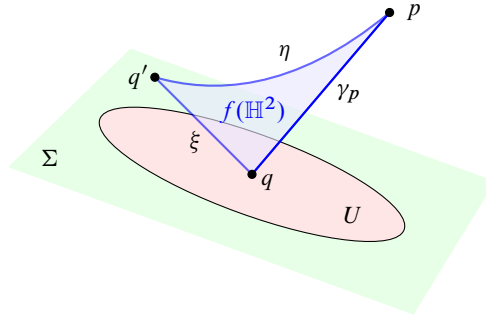


Fig. 4. The geodesic triangle in Proposition 5.1.

to ξ . Since ξ generates the intersection of $(T_{q'}N)^\perp$ with $T_{q'}\Sigma$, we have found an element of $(T_{q'}N)^\perp$ that cannot be in $T_{q'}\Sigma$, and hence N is not orthogonal to Σ .

This contradicts Theorem 4.1, so we conclude that the set $G^mN \cap \Omega_m$ is indeed empty, completing the proof of the proposition. ■

5.2. Codimension 1

In this subsection, we show how Proposition 5.1 can be used to complete the proof of Theorem 1.4 for the case of closed hypersurfaces in a compact manifold. For this, we use the following result of Shah [40, Theorem B] from homogeneous dynamics.

Theorem 5.2. *Suppose that $n \geq 3$, $G = \text{SO}_0(n, 1)$, $\Gamma < G$ a cocompact lattice, and $W = \text{SO}_0(n - 1, 1)$. Then every W invariant subset of G/Γ is either dense or the union of finitely many closed W orbits.*

It is worth mentioning that one can also prove Theorem 5.2 by using Ratner’s work on invariant measures for unipotent flows [35] and work of either Ratner [36] or Dani–Margulis [11] on equidistribution and orbit closures. In fact, we will use this approach in Section 5.3. The proof given in Shah’s paper [25] instead follows Margulis’ original proof of the Oppenheim conjecture using topological dynamics [10]. It seems possible that those methods might prove all the results we need in this paper, but we do not pursue this here.

The following standard lemma shows how immersed totally geodesic submanifolds correspond to closed W orbits in G/Γ .

Lemma 5.3. *Let M be a compact hyperbolic manifold of dimension n and let $N \subset M$ be a closed immersed totally geodesic hypersurface. Then there are either one or two closed W orbits in G/Γ which project onto N . Furthermore, distinct immersed totally geodesic hypersurfaces give rise to distinct W orbits.*

Proof. Given a closed immersed totally geodesic hypersurface N , its lift \tilde{N} to the universal cover $\tilde{M} = \mathbb{H}^n$ has stabilizer

$$H = g^{-1} \text{O}^+(n - 1, 1)g,$$

where g is any isometry taking \tilde{N} to the standard \mathbb{H}^{n-1} stabilized by

$$O^+(n - 1, 1) = S(O(1) \times O(n - 1, 1)) \cap SO_0(n, 1).$$

Since N is closed, $H \cap \Gamma$ is a cocompact lattice. Writing $O^+(n - 1, 1)g = gH$ we see that the $O^+(n - 1, 1)$ orbit of $[g]$ is the g translate of $H/H \cap \Gamma$ in G/Γ . As $O^+(n - 1, 1)$ contains $SO_0(n - 1, 1)$ as a subgroup of index two, this $O^+(n - 1, 1)$ orbit is either one or two $SO_0(n - 1, 1)$ orbits giving the first claim. Since distinct choices of N give rise to distinct groups H , the last statement is clear. ■

We are now in a position to conclude Theorem 1.4 in our special case.

Theorem 5.4. *Let M be a compact hyperbolic manifold built from building blocks with two adjacent, arithmetic, and dissimilar building blocks. Then there are only finitely many closed immersed totally geodesic hypersurfaces in M .*

Proof. Denote by Ω_{n-1} the open set provided by Proposition 5.1 applied when $m = n - 1$ and by V its pre-image in G/Γ (which can be identified with $OF(M)$, the orthonormal frame bundle). By Proposition 5.1 and Lemma 5.3, the W orbits arising from all closed immersed totally geodesic hypersurfaces in M have trivial intersection with V . By Theorem 5.2 we thus have a finite collection of W orbits and hence we must only have finitely many totally geodesic closed immersed hypersurfaces in M . ■

5.3. Theorem 1.4 in the compact case

The equidistribution results in this section are considered well-known by experts, and can for example be deduced from work of Mozes and Shah [31]; see [5] for a treatment that proves the conclusions that we need from this point of view. For simplicity, we write this subsection assuming that M is compact, that is to say that $\Gamma < G$ is a cocompact lattice. Throughout we assume M satisfies the hypotheses of Theorem 1.4 and use the conventions that $m = n - k$ and $W_m = SO_0(m, 1)$. Our choice of W_m ensures that it is connected and generated by one-parameter unipotent subgroups.

We begin by recalling some notation and a result of Dani and Margulis. Let \mathcal{H} be the collection of subgroups H of G such that $H \cap \Gamma$ is a lattice in H and $\text{Ad}(H \cap \Gamma)$ is Zariski dense in $\text{Ad}(H)$. Given $H \in \mathcal{H}$ and a group $W \subset G$ generated by unipotent elements, define

$$X(H, W) = \{g \in G : Wg \subset gH\}.$$

We remark for later that the following is immediate from the definition.

Lemma 5.5. *If $x \in G$, then $X(H, xWx^{-1}) = xX(H, W)$.*

We now recall a special case of [11, Theorem 3], where the advantage of assuming that Γ is cocompact is that we may take $K = G/\Gamma$ in their notation. (We emphasize here that our K below will be a maximal compact subgroup of G .)

Theorem 5.6. *Let G be a Lie group and $\Gamma < G$ a cocompact lattice. Let μ be the Haar measure on G/Γ . Let $U = \{u_t\}$ be a one-parameter Ad-unipotent subgroup of G and let ϕ be a bounded continuous function on G/Γ . Fix $\epsilon > 0$, then there exist finitely many*

subgroups $H_1, \dots, H_r \in \mathcal{H}$ such that for $x \notin \bigcup_{i=1}^r X(H_i, U)\Gamma/\Gamma$ there exists a $T_0 \geq 0$ such that

$$\left| \frac{1}{T} \int_0^T \phi(u_t x) dt - \int_{G/\Gamma} \phi d\mu \right| < \epsilon$$

for all $T > T_0$.

This theorem says that any u_t trajectory not contained in any of the $X(H_i, U)$ eventually has time average for ϕ equal to the space average for ϕ . Then, let

$$\pi_m : \text{OF}(M) \rightarrow G^m M$$

be the bundle map defined in Section 5.1, let Ω_m be the open set provided by Proposition 5.1, and let $V_m = \pi_m^{-1}(\Omega_m)$. For our purposes we will always take ϕ_m to be a compactly supported function of total integral 1 with support in V_m . Then any unipotent trajectory in $\text{OF}(M)$ corresponding to part of the horocycle flow of a closed immersed totally geodesic submanifold must have

$$\frac{1}{T} \int_0^T \phi_m(u_t x) dt = 0$$

for all T . In particular, the entire trajectory is contained in

$$\bigcup_{i=1}^r X(H_i, U)\Gamma/\Gamma,$$

by Theorem 5.6.

In the remainder of this section, we show that all pre-images of closed immersed totally geodesic submanifolds are contained in

$$\bigcup_{i=1}^r X(H_i, W_m)\Gamma/\Gamma$$

for some finite collection of subgroups $H_i \in \mathcal{H}$. We then give a concrete description of each $X(H_i, W_m)$. These form the content of Lemma 5.7 and Proposition 5.11. The geometric translations in Corollaries 5.8 and 5.12 will then give the requisite finiteness statement. We now begin with a key reduction for our proof, noting that W_m is generated by unipotent subgroups.

Lemma 5.7. *Fix m between 2 and $n - 1$, let $W = W_m$, and let U_1, \dots, U_s be unipotent subgroups generating W . If $H \in \mathcal{H}$, then*

$$X(H, W) = \bigcap_{i=1}^s X(H, U_i).$$

Proof. It is clear that $X(H, W) \subset X(H, U_i)$ for all $1 \leq i \leq s$. Taking the derivative of the defining equation of $X(H, W)$, we see that $g \in X(H, W)$ if and only if $\text{Ad}(g^{-1})\mathfrak{w} \subset \mathfrak{h}$. Consequently, if $g \in X(H, W)$, then $\text{Ad}(g^{-1})\mathfrak{u} \subset \mathfrak{h}$ for any connected subgroup $U < W$. As \mathfrak{h} is a subalgebra, if $\text{Ad}(g^{-1})\mathfrak{u}_i \subset \mathfrak{h}$ for all $1 \leq i \leq s$, then $\text{Ad}(g^{-1})\mathfrak{w} \subset \mathfrak{h}$. This gives the reverse containment. ■

Corollary 5.8. *Let $M = \mathbb{H}^n / \Gamma$ be any compact hyperbolic manifold satisfying the hypotheses of Theorem 1.4. Fix an integer m between 2 and $n - 1$, and let $K \cong \text{SO}(n)$ denote a maximal compact subgroup of $G = \text{SO}_0(n, 1)$. Then there are finitely many subgroups $H_{1,m}, \dots, H_{j_m,m}$ of G such that the set of all closed immersed totally geodesic submanifolds of M of dimension m is contained in*

$$\mathcal{X}_m = K \backslash K \left(\bigcup_{i=1}^{j_m} X(H_{i,m}, W_m) \Gamma / \Gamma \right) \subset M.$$

In particular, the set of all closed immersed totally geodesic submanifolds of M of dimension between 2 and $n - 1$ is contained in the union of the \mathcal{X}_m .

Proof. Fix some m between 2 and $n - 1$. By definition, the pre-image in G/Γ of any closed immersed totally geodesic submanifold N of M with dimension m has empty intersection with V_m . Arguing as in Lemma 5.3, we see that $\tilde{N} \subset \tilde{M}$ is stabilized by a conjugate of

$$L = \text{S}(\text{O}(n - m) \times \text{O}(m, 1)) \cap \text{SO}_0(n, 1).$$

Again as in Lemma 5.3, there is a closed L orbit in G/Γ covering N which is clearly W_m invariant, since $W_m < L$. Therefore the set of all closed immersed totally geodesic submanifolds of M is contained in a W_m invariant set avoiding the set V_m defined after the statement of Theorem 5.6. Picking any bounded continuous function ϕ_m with support in V_m and average $\int \phi_m d\mu = 1$, the statement is then immediate from Theorem 5.6 and Lemma 5.7 for totally geodesic submanifolds of dimension m . Repeating the argument in each dimension establishes the last statement in the corollary and completes the proof. ■

To complete the proofs of our main theorems, we now need to compute the sets $X(H, W_m)$ for any $H \in \mathcal{H}$. Note that by definition any H for which $X(H_i, W_m)$ is nonempty contains a conjugate of W_m or equivalently H is a conjugate of a group containing W_m . The following lemma is elementary and contained in, for example, Einsiedler and Wirth [14, Corollary 3.2].

Lemma 5.9. *Any closed subgroup $H < G = \text{SO}_0(n, 1)$ containing W_m is of the form*

$$\text{S}(K \times \text{O}(\ell, 1)) \cap G,$$

where $\ell \geq m$ and K is a compact subgroup of $\text{O}(n - \ell)$.

We also need an elementary algebraic lemma concerning W_m, H , and G .

Lemma 5.10. *Fix m between 2 and $n - 1$, let $W = W_m$, and let H be any subgroup satisfying $W < H < G$. Then any subgroup W' of H isomorphic to W is conjugate to W in H . Furthermore, $\text{Aut}(W) < G$ and $\text{Aut}(W) < H$ unless H is $K \times \text{SO}(m, 1)$ for some compact K .*

Proof. For the first statement, we can assume that $H = \text{SO}_0(\ell, 1)$ since any subgroup $W' \cong \text{SO}_0(m, 1)$ is obviously contained in a subgroup of H isomorphic to $\text{SO}_0(\ell, 1)$. In this case we identify $\text{Isom}(\mathbb{H}^\ell)$ with H by writing $\mathbb{H}^\ell = K \backslash H$, where $K = \text{SO}(\ell)$ is

a maximal compact subgroup of H . The orbits of W and W' in \mathbb{H}^ℓ are totally geodesic copies of \mathbb{H}^m . Since $\text{SO}_0(\ell, 1)$ acts transitively on totally geodesic embeddings of \mathbb{H}^m , there is an isometry $g \in H$ carrying the W orbit to the W' orbit and hence $g^{-1}Wg < W'$.

The last statement follows similarly as $\text{Aut}(W)$ is simply the group of all isometries of \mathbb{H}^m , including the orientation-reversing isometries, and these can be realized in $\text{Isom}(\mathbb{H}^\ell)$. The only case where these are not all in H is when H contains only $\text{SO}_0(m, 1)$ and not $\text{O}^+(m, 1)$. ■

We now describe the possible $X(H, W_m)$, where in what follows we write $Z(W)$ for the centralizer of a subgroup W in G .

Proposition 5.11. *Fix m between 2 and $n - 1$, let $W = W_m$, and fix $H \in \mathcal{H}$ for which $X(H, W)$ is nonempty. Then either there exists $x \in G$ such that $X(H, W) = Z(W)xH$ or there exist $x_1, x_2 \in G$ such that $X(H, W) = Z(W)x_1H \cup Z(W)x_2H$.*

Proof. Conjugating W by a suitable element $x \in G$, we may assume $W' = x^{-1}Wx < H$. We first show the corresponding result for W' .

It is clear that $Z(W')H \subset X(H, W')$ and we need only prove the reverse inclusion. To this end, let $y \in X(H, W')$ and define $W'' = y^{-1}W'y$ to be the resulting subgroup of H . Then from Lemma 5.10, we know that W'' is conjugate to W' by an element $h \in H$. When $\text{Aut}(W') < H$, we may moreover choose h so that conjugating W' by yh is the identity on W' . This immediately implies that $yh \in Z(W')$ and hence $y \in Z(W')H$. When $\text{Aut}(W')$ is not contained in H , we can only guarantee that yh is either in $Z(W')$ or is of the form zf , where $z \in Z(W')$ and $f \in G$ is any fixed element of G inducing the outer automorphism of W . Hence either $X(H, W') = Z(W')H$ or $X(H, W') = Z(W')H \cup Z(W')fH$ as claimed.

For the general case, we use Lemma 5.5 to compute $X(H, W)$. Since

$$Z(W') = Z(x^{-1}Wx) = x^{-1}Z(W)x,$$

in the first case we get that $X(H, W) = xx^{-1}Z(W)xH = Z(W)xH$ and in the second case we get that $X(H, W) = Z(W)xH \cup Z(W)xfH$. ■

Corollary 5.12. *Let $M = \mathbb{H}^n/\Gamma$ be a finite-volume hyperbolic manifold. For any fixed $H \in \mathcal{H}$ and m between 2 and $n - 1$, the subset $K \backslash KX(H, W_m)\Gamma/\Gamma \subset M$ is either one or two closed totally geodesic submanifolds of M .*

Proof. It is enough to see that $K \backslash KZ(W)xH\Gamma/\Gamma$ is as described. Since $Z(W) \subset K$, it can be dropped from the expression and we have $K \backslash KxH\Gamma/\Gamma$. By Lemma 5.9,

$$H = \text{S}(C \times \text{O}(\ell, 1)) \cap \text{SO}_0(n, 1),$$

where C is a subgroup of K and $H \cap \Gamma$ is a lattice. Hence we are reduced to the K, Γ double coset of xH which is precisely a closed immersed totally geodesic submanifold of M . ■

Theorem 1.4 in the case where M is compact is now immediate from Corollary 5.8 and Corollary 5.12.

5.4. Theorem 1.4 in the general finite-volume case

The goal of this subsection is to prove an analogue of Corollary 5.8 in the case when M has finite volume, after which one is reduced to repeating the proof in Section 5.3. There is some difficulty in extending the argument above to the case of finite covolume, since the general version of Theorem 5.6, stated below, is more complicated. Our main tool for circumventing this issue is the following simple geometric lemma. We emphasize that in this subsection we use “closed” in the sense of orbits, so any immersed finite-volume totally geodesic submanifold is considered to be closed in what follows.

Lemma 5.13. *Let M be a noncompact finite volume hyperbolic manifold of dimension n . Then there is a compact set $C \subset M$ such that any closed immersed totally geodesic submanifold N in M of dimension between 2 and $n - 1$ has nonempty intersection with C .*

Proof. Note that each submanifold N has fundamental group $\pi_1(N)$ which is a lattice in some $SO_0(m, 1)$ and injects in $\pi_1(M)$. Moreover, the cusps of M have solvable fundamental groups and consequently $\pi_1(N)$ admits no embeddings into these groups. Let C_1 be a compact core of M (see [24, p. 156]), so $M \setminus C_1$ is entirely contained in the cusps. Then the image of every N in M must intersect C_1 . A compact subset C of M containing a neighborhood of C_1 gives the requisite compact set. ■

We now state the general form of the theorem of Dani and Margulis [11, Theorem 3], where in their language we assume that $K = C$, $F = \{x\}$, and the C_i are all subsets of the $X(H_i, U)$. As in the previous section, our K below will be a maximal compact subgroup of G .

Theorem 5.14. *Let G be a connected Lie group, let $\Gamma < G$ be a lattice, and let μ be the G invariant probability measure on G/Γ . Let $U = \{u_t\}$ be any Ad-unipotent one-parameter subgroup of G and ϕ a bounded continuous function on G/Γ . Let C be a compact subset of G/Γ and let $\epsilon > 0$ be given. Then there exist finitely many proper closed subgroups H_1, \dots, H_r such that $H_i \cap \Gamma$ is a lattice in H_i and such that for any x in*

$$C \setminus \left(\bigcup_{i=1}^r (X(H_i, U)\Gamma/\Gamma) \right),$$

there exists $T_0 \geq 0$ such that

$$\left| \frac{1}{T} \int_0^T \phi(u_t x) dt - \int_{G/\Gamma} \phi d\mu \right| < \epsilon$$

for all $T > T_0$.

The need for Lemma 5.13 comes from the fact that the H_i depend on C in this statement. We believe this is an artifact of the proof given in [11], but modifying their proof to avoid this dependence requires significant changes. We now show how to combine Lemma 5.13 and Theorem 5.14 to obtain our desired finiteness result.

Proposition 5.15. *Fix m between 2 and $n - 1$, let $W_m = SO_0(m, 1)$, and let M be any finite volume hyperbolic manifold satisfying the hypotheses of Theorem 1.4. Then there are*

finitely many subgroups $H_{1,m}, \dots, H_{j_m,m}$ of G such that the set of all closed immersed totally geodesic submanifolds of M of dimension m is contained in

$$\mathcal{X}_m = K \backslash K \left(\bigcup_{i=1}^{j_m} X(H_{i,m}, W_m) \Gamma / \Gamma \right),$$

where K is a maximal compact subgroup of G . In particular, the set of all closed immersed totally geodesic submanifolds of M of dimension between 2 and $n - 1$ is contained in the union of the \mathcal{X}_m .

Proof. As in the proof of Corollary 5.8, we see that each totally geodesic submanifold of M of dimension m gives rise to a closed orbit of

$$L = \text{S}(\text{O}(n - m) \times \text{O}(m, 1)) \cap \text{SO}_0(n, 1).$$

By Lemma 5.13, there is a compact subset C in G/Γ such that any closed L orbit intersects C . We also know that there are finitely many unipotent subgroups U_1, \dots, U_{s_m} that generate $W_m = \text{SO}_0(m, 1) < L$, and so

$$X(H, W_m) = \bigcap_{j=1}^{s_m} X(H, U_j)$$

for any $H \in \mathcal{H}$.

We apply Theorem 5.14 to each U_j using C as the compact set, taking ϵ to be any fixed number $0 < \epsilon < 1$, and with ϕ_m a compactly supported function with integral 1 and support in $V_m = \pi^{-1}(\Omega_m)$. Given a closed L orbit \mathcal{O} , we pick a point x contained in $\mathcal{O} \cap C$. For any U_j the time average of ϕ_m over the x orbit is zero, and so by the above there are finitely many $H_{i,j,m}$ such that x is in one of the $X(H_{i,j,m}, U_j)$. Taking intersection over j and re-indexing the resulting collection of subgroups completes the proof for fixed m . Repeating the argument in each dimension establishes the last statement in the corollary and completes the proof. ■

Given Proposition 5.15, the proof of Theorem 1.4 for finite-volume manifolds proceeds exactly as in the compact case.

6. Examples

6.1. Hyperbolic 3-manifolds and link complements

We begin with a few examples to give a sense of the known possibilities for existence of arithmetic/non-arithmetic hyperbolic 3-manifolds with certain behavior for their geodesic surfaces.

Example 6.1. The figure-eight knot complement [23, Section 9.6] contains infinitely many distinct immersed totally geodesic surfaces. They may be taken to be closed.

Example 6.2. The Weeks manifold [23, Section 13.5, Example 1] is arithmetic and contains no totally geodesic surfaces.

Example 6.3. Performing $(-4, 1)$ -surgery on the sister of the figure-eight knot complement [23, Section 13.5, Example 8] determines a non-arithmetic closed hyperbolic manifold M of volume $1.42361\dots$ that satisfies the conditions of [23, Theorem 5.3.1], and hence contains no totally geodesic surfaces.

Example 6.4. Consider the three-twist knot 5_2 . It has (invariant) trace field the cubic extension of \mathbb{Q} with minimal polynomial $t^3 - t^2 + 1$. It follows from [23, Theorem 5.3.8] that the associated hyperbolic knot complement contains no *closed* totally geodesic surfaces. It does, however, contain an immersed totally geodesic 3-punctured sphere (see for instance [37]).

Example 6.5. Calegari showed that fibered knots (more generally, fibered knots in rational homology spheres) with trace field of odd degree cannot contain immersed totally geodesic surfaces [9]. For instance, this holds for the knot 8_{20} in [38].

As further motivation, we recall the Menasco–Reid conjecture.

Conjecture 6.6 (Menasco–Reid [28]). Let \mathcal{K} be a hyperbolic knot. Then $S^3 \setminus \mathcal{K}$ does not contain a closed embedded totally geodesic surface.

In [28], Menasco and Reid prove the conjecture for tunnel number one knots. Our results then have the following “almost” version of the conjecture, which also allows one to promote embedded to immersed:

Theorem 6.7. *Let \mathcal{K} be a hyperbolic knot for which $S^3 \setminus \mathcal{K}$ satisfies the conditions of Theorem 1.4. Then $S^3 \setminus \mathcal{K}$ contains only finitely many closed, immersed totally geodesic surfaces.*

Menasco and Reid also proved that alternating hyperbolic links cannot contain embedded closed totally geodesic surfaces [28, Theorem 1]. Such a link can certainly contain punctured totally geodesic surfaces, and, when Theorem 1.4 applies, we see that $S^3 \setminus L$ can only contain finitely many such surfaces. To prove Theorem 1.3, we must produce an infinite family of examples to which Theorem 1.4 will apply. We do this via the operation on links called the *belted sum*, which is justified by the following theorem of Adams.

Theorem 6.8 (Adams [2]). *Suppose M is a complete finite-volume hyperbolic 3-manifold. Then any incompressible and properly embedded 3-punctured sphere in M is isotopic to one that is totally geodesic.*

Let M_1, M_2 be noncommensurable arithmetic hyperbolic 3-manifolds each containing an embedded totally geodesic 3-punctured spheres. Since the hyperbolic structure on a 3-punctured sphere is unique, we can cut M_1, M_2 open along these surfaces and obtain a Gromov and Piatetski-Shapiro non-arithmetic manifold. The proof of [2, Theorem 4.1] makes this connection very explicit. In particular, Theorem 1.4 applies and the hybrid manifold has finitely many totally geodesic surfaces.

We apply this in the case where $M_i = S^3 \setminus L_i$ for L_i a link containing an unknotted component as in Figure 5. This contains an obvious properly embedded 2-punctured disk D_i , which is then isotopic to a totally geodesic 3-punctured sphere in M_i . One can

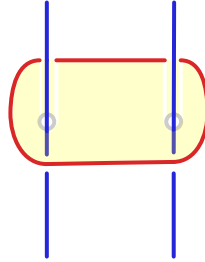


Fig. 5. An essential 2-punctured disk from an unknotted component.

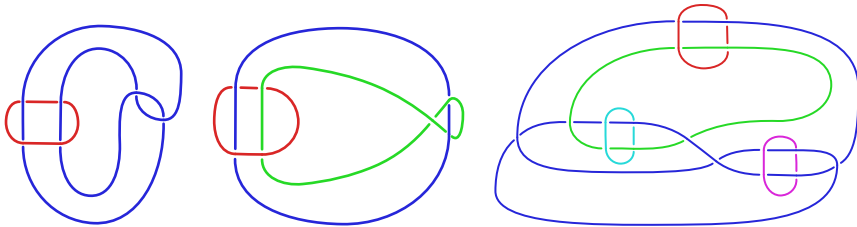


Fig. 6. Three incommensurable arithmetic links.

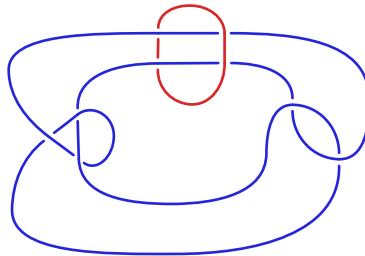


Fig. 7. The belted sum of the Whitehead link and the three chain link.

then glue $M_1 \setminus D_1$ to $M_2 \setminus D_2$ to obtain a new link $L_{1,2}$ in S^3 , which is visibly built from arithmetic building blocks. This link is the belted sum of L_1 and L_2 .

The belted sum of noncommensurable arithmetic links will be a non-arithmetic link built out of two dissimilar hyperbolic building blocks. To prove Theorem 1.3, we use an arithmetic link containing two trivial summands as in Figure 5. See Figure 6 for some arithmetic links with this property. We chose these links to be mutually incommensurable. The first is the Whitehead link, which is commensurable with $\text{PSL}_2(\mathbb{Z}[i])$. The second is the three chain link, which is commensurable with $\text{PSL}_2(\mathbb{Z}[\frac{1}{2}(1 + \sqrt{-7})])$. The third is a five component link commensurable with $\text{PSL}_2(\mathbb{Z}[\frac{1}{2}(1 + \sqrt{-15})])$. See for instance [23, Section 9.2].

See Figure 7 for the belted sum of the Whitehead link and the three chain link. This is the link 7_6^2 from Rolfsen’s tables [38]. This is a link complement built from dissim-

ilar hyperbolic building blocks, hence it contains only finitely many immersed totally geodesic submanifolds. It is alternating, so it has no closed immersed totally geodesic submanifolds by [28, Theorem 1]. We note that it has trace field $\mathbb{Q}(i, \sqrt{-7})$ by a theorem of Neumann–Reid (see [23, Section 5.6], and note that the trace field and invariant trace field are the same for link complements [23, Corollary 4.2.2]). However, to prove Theorem 1.3, we use the five component link in Figure 6.

Proof of Theorem 1.3. Let L_1 be the Whitehead link and L_2 the five component link in Figure 6. Then L_2 contains a pair of totally geodesic 3-punctured spheres S_2^+ and S_2^- associated with any two of the three unknotted components. For $r \geq 3$, let L_r be the two component link obtained by performing $\frac{1}{r}$ -Dehn surgery on the third unknotted component of L_2 . Note that S_2^+ and S_2^- still determine totally geodesic thrice-punctured spheres in $S^3 \setminus L_r$; choose one and call it S_r .

Let N_1 be $S^3 \setminus L_1$ cut open along the totally geodesic 3-punctured sphere S_1 associated with its unknotted component. Let N_2 be a copy of $S^3 \setminus L_2$, cut open along S_2^+ and S_2^- . Finally, let N_r be the result of cutting $S^3 \setminus L_r$ open along S_r , $r \geq 3$. We can then perform an iterated belted sum, starting with N_1 belted to N_2 by gluing S_1 to S_2^+ , then N_2 belted to N_r by gluing S_2^- to S_r .

$$N_1 \xleftrightarrow{S_1 \leftrightarrow S_2^+} N_2 \xleftrightarrow{S_2^- \leftrightarrow S_r} N_r.$$

This determines a link \mathcal{L}_r in S^3 that is built from building blocks, and there are two adjacent blocks that are arithmetic and dissimilar, so $S^3 \setminus \mathcal{L}_r$ contains only finitely many immersed totally geodesic surfaces.

To complete the proof of the theorem, we must check that the links \mathcal{L}_r determine infinitely many distinct commensurability classes of hyperbolic 3-manifolds. Let k_r be the trace field of $S^3 \setminus \mathcal{L}_r$. It suffices to show that the degree $[k_r : \mathbb{Q}]$ goes to infinity as r goes to infinity. Let $F_r = \mathbb{Q}(\alpha_r)$ be the trace field of $S^3 \setminus L_r$. By a theorem of Neumann and Reid [23, Section 5.6], we have

$$k_r = \mathbb{Q}(i, \sqrt{-7}, \alpha_r),$$

so it now suffices to check that $[F_r : \mathbb{Q}]$ gets arbitrarily large. However, the links L_r are all Dehn surgery on a fixed link (namely, L_2), so $S^3 \setminus L_r$ has uniformly bounded volume. Since there are only finitely many hyperbolic 3-manifolds of bounded volume and trace field degree [20], the result follows. ■

6.2. Hyperbolic Coxeter lattices

A Coxeter polyhedron $P \subset \mathbb{H}^n$ is a finite-volume polyhedron with totally geodesic faces having the property that adjacent faces intersect at angles which are integral submultiples of π . Such finite-volume polyhedra can only exist in dimensions $n \leq 995$ by Prokhorov (see [32]), and compact ones can only exist in dimensions $n \leq 29$ by Vinberg [43]. Associated with such a polyhedron P , one can form the lattice $\Gamma_P < \text{SO}(n, 1)$ generated by reflections in the hyperplanes containing the faces of the polyhedron. We call these

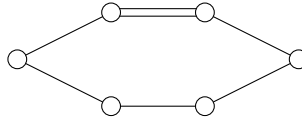


Fig. 8. The Coxeter diagram of a 5-simplex in \mathbb{H}^5 .

Coxeter lattices. Vinberg gave a simple criterion for whether such a lattice is arithmetic, and gave examples in dimensions $n = 3, 4, 5$ of non-arithmetic Coxeter lattices that predated the Gromov–Piatetski-Shapiro constructions. This was extended by Ruzmanov [39] who produced non-arithmetic Coxeter lattices in dimension $6 \leq n \leq 10$.

In a recent paper, Vinberg [44] points out that the Gromov–Piatetski-Shapiro construction can also be applied to Coxeter polyhedra in a particularly simple manner. Given a pair of polyhedra P_1, P_2 , let us assume that they contain faces $F_i \subset P_i$ which are isometric to each other and have the property that every other face which intersects F_i does so orthogonally. In that case, we can form a new Coxeter polyhedron P by gluing the P_i together along the F_i . If the original polyhedra P_i are not commensurable, then the resulting P is non-arithmetic. Vinberg used this procedure to create non-arithmetic Coxeter lattices in dimensions $n = 11, 12, 14, 18$ (as well as new examples in some lower dimensions).

Let us call a Coxeter polyhedron P *splittable* if one can find a totally geodesic hyperplane $H \subset \mathbb{H}^n$ with the property that every face of P which intersects H either is contained in H or intersects H orthogonally. Observe that the polyhedra P_i in Vinberg’s gluing construction are splittable, as is the resulting polyhedron P . Splittable polyhedra also play a key role in work of Allcock [4]. We call a polyhedron *unsplittable* if it is not splittable.

Lemma 6.9. *Let P be an unsplittable Coxeter polyhedron. Then the associated Coxeter lattice Γ_P is not commensurable with any Gromov–Piatetski-Shapiro-type lattice.*

Proof. By way of contradiction, assume that the associated Coxeter lattice Γ_P is commensurable with a Gromov–Piatetski-Shapiro-type lattice Λ . Then there are isomorphic finite index torsion-free subgroups $\Gamma < \Gamma_P$ and $\Gamma < \Lambda$. The associated hyperbolic manifold $M = \mathbb{H}^n / \Gamma$ is then itself a Gromov–Piatetski-Shapiro-type hyperbolic manifold, but is also tessellated by finitely many copies of the hyperbolic polyhedron P . Let $\Sigma \subset M$ be a totally geodesic cutting hypersurface for the Gromov–Piatetski-Shapiro decomposition of M .

In the tessellation of M , consider any of the copies of P that intersect Σ . Since P is unsplittable and Σ is of codimension 1, there exists a face of this polyhedron that intersects Σ at an angle $0 < \theta < \frac{\pi}{2}$. But this face extends to a closed totally geodesic immersed hypersurface, which contradicts angle rigidity. ■

We now produce examples in dimension 3 and 5 to which Lemma 6.9 applies. First we briefly recall Vinberg’s notion of a *quasi-arithmetic* lattice. Let \mathcal{G} be a \mathbb{Q} -algebraic group such that $\mathcal{G}(\mathbb{Z})$ defines an arithmetic lattice in $\text{SO}(n, 1)$. A lattice Γ in $\text{SO}(n, 1)$ is quasi-arithmetic if it is contained in $\mathcal{G}(\mathbb{Q})$. Vinberg showed that there are quasi-arithmetic

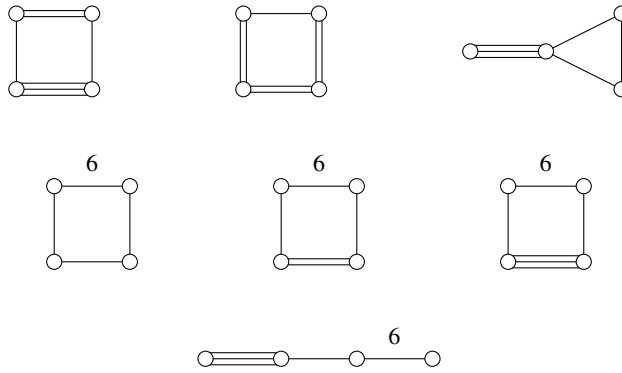


Fig. 9. Coxeter diagrams for 3-simplices in \mathbb{H}^3 .

lattices that are not arithmetic (i.e., are not commensurable with $\mathcal{G}(\mathbb{Z})$) (see [42]). The inbreeding examples of Agol and Belolipetsky–Thomson are also quasi-arithmetic, but the Gromov–Piatetski-Shapiro-type examples described in Section 2.2 are not (see [41]).

The 5-dimensional example in the following will prove Theorem 1.7, i.e., that there are non-arithmetic lattices in $SO(5, 1)$ that are not commensurable with a lattice constructed by the methods of Gromov–Piatetski-Shapiro or Agol.

Example 6.10. It is easy to see that if the Coxeter polyhedron $P \subset \mathbb{H}^n$ is combinatorially an n -simplex, then P is unsplittable. There are 72 finite volume Coxeter polyhedra with this combinatorial type. Of these, a few examples give rise to non-arithmetic lattices: one in dimension 5 and seven in dimension 3 (see [21, p. 128]). The 5-dimensional example arises from a noncompact finite-volume 5-simplex in \mathbb{H}^5 with Coxeter diagram given in Figure 8. For the 3-dimensional examples, six of the seven examples are noncompact and finite volume, while one is compact. Their Coxeter diagrams are listed out in Figure 9, with the upper left-most diagram corresponding to the compact 3-simplex polyhedron. For all these examples, our Lemma 6.9 applies and the associated lattices are not commensurable with any Gromov–Piatetski-Shapiro-type lattices. Moreover, for the noncompact polyhedra, the associated lattices are not quasi-arithmetic (see [42, p. 442, Remark 3]). This proves Theorem 1.7.

Given a splittable Coxeter polyhedron $P \subset \mathbb{H}^n$, one can consider the hyperplane $H \subset \mathbb{H}^n$ giving rise to the splitting. Then the intersection $H \cap P$ yields a Coxeter polyhedron in $H \cong \mathbb{H}^{n-1}$ with faces of $H \cap P$ corresponding bijectively with the faces of the original P that were orthogonal to H . The number of faces of $H \cap P$ is strictly smaller than the number of faces of P . Indeed, H separates \mathbb{H}^n into two half-spaces H^+ and H^- , and in order for P to have finite volume, there needs to be at least one face of P on each side of H satisfying $H^\pm \cap \text{Int}(P) \neq \emptyset$. Such faces will be disjoint from H , giving a generator for Γ_P which does not lie in $\Gamma_{P \cap H}$. Recall that a *special subgroup* of a Coxeter group is a subgroup generated by a subset of the Coxeter generating set. This establishes the following lemma.

Lemma 6.11. *If a Coxeter polyhedron $P \in \mathbb{H}^n$ is splittable, then the associated Coxeter group contains a proper special subgroup which is itself a Coxeter group for a Coxeter polyhedron $P' \subset \mathbb{H}^{n-1}$.*

In practice, Lemma 6.11 can be used to show that certain Coxeter polyhedron are unsplittable. For example, Andreev’s theorem gives an algorithm for deciding whether a Coxeter group arises from a polyhedron in \mathbb{H}^3 (see [12, Section 6.10]). Thus if one is given a Coxeter polyhedron $P \subset \mathbb{H}^4$, one can sometimes use Andreev’s theorem to algorithmically verify if the polyhedron is unsplittable. Unfortunately, all examples of 4-dimensional Coxeter polyhedra currently known to the authors are either splittable, or yield lattices that are quasi-arithmetic.

Closely related to our unsplittable polyhedra are the *essential* polyhedra, introduced by Felikson and Tumarkin [16]. These are polyhedra which cannot be decomposed into smaller Coxeter polyhedra glued along faces. In their paper they give a commensurability classification of all the known (at the time) essential polyhedra. While the two notions of unsplittable and essential are related, neither implies the other.

We close by noting that it would be interesting to use results of this kind to produce infinitely many commensurability classes of lattices in $\mathrm{SO}(n, 1)$ for small n that cannot arise from the constructions of Gromov–Piatetski-Shapiro or Agol. While this seems possible in small dimensions, one still wonders if the “maybe for large n ” in Question 1.6 is related to the non-existence of Coxeter polytopes and related geometric objects in sufficiently high dimension.

Acknowledgments. The authors thank the referee for a thorough reading of the paper.

Funding. Fisher was partially supported by NSF Grant Number DMS-1308291 and Grant Number DMS-1607041. Lafont was partially supported by the NSF Grant Number DMS-1510640 and Grant Number DMS-1812028. Stover was partially supported by the NSF Grant Number DMS-1361000 and Grant Number 523197 from the Simons Foundation/SFARI. The authors acknowledge support from U.S. National Science Foundation grants DMS-1107452, DMS-1107263, DMS-1107367 “RNMS: GEometric structures And Representation varieties” (the GEAR Network).

References

- [1] Abert, M., Bergeron, N., Biringer, I., Gelander, T., Nikolov, N., Raimbault, J., Samet, I.: On the growth of L^2 -invariants of locally symmetric spaces, II: Exotic invariant random subgroups in rank one. *Int. Math. Res. Not. IMRN* **2020**, 2588–2625 (2020) MR [4095420](#)
- [2] Adams, C. C.: Thrice-punctured spheres in hyperbolic 3-manifolds. *Trans. Amer. Math. Soc.* **287**, 645–656 (1985) Zbl [0527.57002](#) MR [768730](#)
- [3] Agol, I.: Systoles of hyperbolic 4-manifolds. arXiv:[0612290](#) (2006)
- [4] Allcock, D.: Infinitely many hyperbolic Coxeter groups through dimension 19. *Geom. Topol.* **10**, 737–758 (2006) Zbl [1133.20025](#) MR [2240904](#)
- [5] Bader, U., Fisher, D., Miller, N., Stover, M.: Arithmeticity, superrigidity, and totally geodesic submanifolds. *Ann. of Math. (2)* **193**, 837–861 (2021) Zbl [07353243](#) MR [4250391](#)

- [6] Belolipetsky, M. V., Thomson, S. A.: Systoles of hyperbolic manifolds. *Algebr. Geom. Topol.* **11**, 1455–1469 (2011) Zbl [1248.22004](#) MR [2821431](#)
- [7] Benoist, Y., Oh, H.: Geodesic planes in geometrically finite acylindrical 3-manifolds. arXiv: [1802.04423](#) (2018)
- [8] Borel, A.: Density and maximality of arithmetic subgroups. *J. Reine Angew. Math.* **224**, 78–89 (1966) Zbl [0158.03105](#) MR [205999](#)
- [9] Calegari, D.: Real places and torus bundles. *Geom. Dedicata* **118**, 209–227 (2006) Zbl [1420.57047](#) MR [2239457](#)
- [10] Dani, S. G., Margulis, G. A.: Values of quadratic forms at primitive integral points. *Invent. Math.* **98**, 405–424 (1989) Zbl [0682.22008](#) MR [1016271](#)
- [11] Dani, S. G., Margulis, G. A.: Limit distributions of orbits of unipotent flows and values of quadratic forms. In: I. M. Gel'fand Seminar, *Adv. Soviet Math.* 16, American Mathematical Society, Providence, 91–137 (1993) Zbl [0814.22003](#) MR [1237827](#)
- [12] Davis, M. W.: *The Geometry and Topology of Coxeter Groups*. London Math. Soc. Monogr. Ser. 32, Princeton University, Princeton, (2008) Zbl [1142.20020](#) MR [2360474](#)
- [13] Delp, K., Hoffoss, D., Manning, J.: Problems in groups, geometry, and three-manifolds. arXiv: [1512.04620](#) (2015)
- [14] Einsiedler, M., Wirth, P.: Effective equidistribution of closed hyperbolic surfaces on congruence quotients of hyperbolic spaces. In preparation (2018)
- [15] Emery, V., Mila, O.: Hyperbolic manifolds and pseudo-arithmeticity. arXiv: [1810.12837](#) (2018)
- [16] Felikson, A., Tumarkin, P.: Essential hyperbolic Coxeter polytopes. *Israel J. Math.* **199**, 113–161 (2014) Zbl [1301.51013](#) MR [3219531](#)
- [17] Gelande, T., Levit, A.: Counting commensurability classes of hyperbolic manifolds. *Geom. Funct. Anal.* **24**, 1431–1447 (2014) Zbl [1366.57011](#) MR [3261631](#)
- [18] Gromov, M.: Hyperbolic groups. In: *Essays in Group Theory*, *Math. Sci. Res. Inst. Publ.* 8, Springer, New York, 75–263 (1987) Zbl [0634.20015](#) MR [919829](#)
- [19] Gromov, M., Piatetski-Shapiro, I.: Nonarithmetic groups in Lobachevsky spaces. *Publ. Math. Inst. Hautes Études Sci.* **66**, 93–103 (1988) MR [932135](#)
- [20] Jeon, B.: Hyperbolic 3-manifolds of bounded volume and trace field degree. Ph.D. thesis, University of Illinois at Urbana-Champaign (2013) MR [3218104](#)
- [21] Johnson, N. W., Kellerhals, R., Ratcliffe, J. G., Tschantz, S. T.: Commensurability classes of hyperbolic Coxeter groups. *Linear Algebra Appl.* **345**, 119–147 (2002) Zbl [1033.20037](#) MR [1883270](#)
- [22] Maclachlan, C., Reid, A. W.: Commensurability classes of arithmetic Kleinian groups and their Fuchsian subgroups. *Math. Proc. Cambridge Philos. Soc.* **102**, 251–257 (1987) Zbl [0632.30043](#) MR [898145](#)
- [23] Maclachlan, C., Reid, A. W.: *The Arithmetic of Hyperbolic 3-Manifolds*. *Grad. Texts in Math.* 219, Springer, New York (2003) Zbl [1025.57001](#) MR [1937957](#)
- [24] Marden, A.: *Outer Circles*. Cambridge University, Cambridge (2007) Zbl [1149.57030](#) MR [2355387](#)
- [25] Margulis, G. A.: Formes quadratiques indéfinies et flots unipotents sur les espaces homogènes. *C. R. Acad. Sci. Paris Sér. I Math.* **304**, 249–253 (1987) Zbl [0624.10011](#) MR [882782](#)

- [26] Margulis, G. A.: Discrete Subgroups of Semisimple Lie Groups. *Ergeb. Math. Grenzgeb.* (3) **17**, Springer, Berlin (1991) Zbl [0732.22008](#) MR [1090825](#)
- [27] McMullen, C. T., Mohammadi, A., Oh, H.: Geodesic planes in hyperbolic 3-manifolds. *Invent. Math.* **209**, 425–461 (2017) Zbl [1383.53044](#) MR [3674219](#)
- [28] Menasco, W., Reid, A. W.: Totally geodesic surfaces in hyperbolic link complements. In: *Topology '90* (Columbus, 1990), Ohio State Univ. Math. Res. Inst. Publ. 1, De Gruyter, Berlin, 215–226 (1992) Zbl [0769.57014](#) MR [1184413](#)
- [29] Meyer, J. S.: Totally geodesic spectra of arithmetic hyperbolic spaces. *Trans. Amer. Math. Soc.* **369**, 7549–7588 (2017) Zbl [1385.11017](#) MR [3695838](#)
- [30] Millson, J. J.: On the first Betti number of a constant negatively curved manifold. *Ann. of Math.* (2) **104**, 235–247 (1976) Zbl [0364.53020](#) MR [422501](#)
- [31] Mozes, S., Shah, N.: On the space of ergodic invariant measures of unipotent flows. *Ergodic Theory Dynam. Systems* **15**, 149–159 (1995) Zbl [0818.58028](#) MR [1314973](#)
- [32] Prokhorov, M. N.: Absence of discrete groups of reflections with a noncompact fundamental polyhedron of finite volume in a Lobachevskii space of high dimension. *Izv. Akad. Nauk SSSR Ser. Mat.* **50**, 413–424 (1986) Zbl [0604.51007](#) MR [842588](#)
- [33] Raimbault, J.: A note on maximal lattice growth in $SO(1, n)$. *Int. Math. Res. Not. IMRN* **2013**, 3722–3731 (2013) Zbl [1367.22005](#) MR [3090707](#)
- [34] Ratcliffe, J. G.: *Foundations of Hyperbolic Manifolds*. *Grad. Texts in Math.* 149, Springer, New York (1994) Zbl [0809.51001](#) MR [1299730](#)
- [35] Ratner, M.: On Raghunathan's measure conjecture. *Ann. of Math.* (2) **134**, 545–607 (1991) Zbl [0763.28012](#) MR [1135878](#)
- [36] Ratner, M.: Raghunathan's topological conjecture and distributions of unipotent flows. *Duke Math. J.* **63**, 235–280 (1991) Zbl [0733.22007](#) MR [1106945](#)
- [37] Reid, A. W.: Totally geodesic surfaces in hyperbolic 3-manifolds. *Proc. Edinb. Math. Soc.* (2) **34**, 77–88 (1991) Zbl [0714.57010](#) MR [1093177](#)
- [38] Rolfsen, D.: *Knots and Links*. *Math. Lecture Ser.* 7, Publish or Perish, Houston (1990) Zbl [0339.55004](#) MR [1277811](#)
- [39] Ruzmanov, O. P.: Examples of nonarithmetic crystallographic Coxeter groups in n -dimensional Lobachevskii space when $6 \leq n \leq 10$. In: *Problems in Group Theory and in Homological Algebra* (Russian), Yaroslavl. Gos. Univ., Yaroslavl', 138–142 (1989) Zbl [0765.20022](#) MR [1068774](#)
- [40] Shah, N. A.: Closures of totally geodesic immersions in manifolds of constant negative curvature. In: *Group Theory from a Geometrical Viewpoint* (Trieste 1990), World Scientific, River Edge, 718–732 (1991) Zbl [0846.53041](#) MR [1170382](#)
- [41] Thomson, S.: Quasi-arithmeticity of lattices in $PO(n, 1)$. *Geom. Dedicata* **180**, 85–94 (2016) Zbl [1334.22012](#) MR [3451458](#)
- [42] Vinberg, E. B.: Discrete groups generated by reflections in Lobachevskii spaces. *Mat. Sb.* (N.S.) **72** (114), 471–488; correction, *ibid.* **73** (115) (1967), 303 (1967) Zbl [0166.16303](#) MR [0207853](#)
- [43] Vinberg, E. B.: The nonexistence of crystallographic reflection groups in Lobachevskii spaces of large dimension. *Funktsional. Anal. i Prilozhen.* **15**, 67–68 (1981) Zbl [0462.51013](#) MR [617472](#)
- [44] Vinberg, E. B.: Non-arithmetic hyperbolic reflection groups in higher dimensions. *Mosc. Math. J.* **15**, 593–602, 606 (2015) Zbl [1359.51004](#) MR [3427439](#)