

A geometric construction of the Conway potential function

David Cimasoni

Abstract. We give a geometric construction of the multivariable Conway potential function for colored links. In the case of a single color, it is Kauffman's definition of the Conway polynomial in terms of a Seifert matrix.

Mathematics Subject Classification (2000). 57M25.

Keywords. Conway potential function, Conway polynomial, colored link, C-complex.

1. Introduction

A *colored link* is an oriented link $L = L_1 \cup \dots \cup L_\mu$ in S^3 together with a surjective map σ assigning to each component L_i a color $\sigma(i) \in \{1, \dots, n\}$. Two colored links (L, σ) and (L', σ') are *isotopic* if there exists an ambient isotopy from L to L' preserving the color and orientation of each component.

Given a colored link (L, σ) with exterior X , we have $H_1 X = \bigoplus_{i=1}^{\mu} \mathbb{Z}t_i$, where t_1, \dots, t_μ denote the oriented meridians of L . The Hurewicz morphism $\pi_1 X \rightarrow H_1 X$ composed with $\bigoplus_{i=1}^{\mu} \mathbb{Z}t_i \rightarrow \bigoplus_{i=1}^n \mathbb{Z}t_i$, $t_i \mapsto t_{\sigma(i)}$, determines a regular \mathbb{Z}^n -covering $\widehat{X}^\sigma \rightarrow X$. The homology of \widehat{X}^σ is endowed with a natural structure of module over $\Lambda_n = \mathbb{Z}[t_1, t_1^{-1}, \dots, t_n, t_n^{-1}]$. The Λ_n -module $H_1 \widehat{X}^\sigma$ is called the *Alexander module* of (L, σ) : it is an invariant of the colored link. The first elementary ideal of this module is principal; a generator is called the *multivariable Alexander polynomial* of (L, σ) . It is denoted by $\Delta_L^\sigma(t_1, \dots, t_n)$. Note that Δ_L^σ is only defined modulo the units of Λ_n , that is, up to multiplication by $\pm t_1^{\nu_1} \dots t_n^{\nu_n}$.

If $n = 1$, $\Delta_L^\sigma(t)$ is nothing but the Alexander polynomial of the unordered oriented link L , as defined by James Alexander [1]. On the other hand, if $n = \mu$ and $\sigma = \text{id}$, $\Delta_L^\sigma(t_1, \dots, t_\mu)$ is denoted by $\Delta_L(t_1, \dots, t_\mu)$: it is the Alexander polynomial of the ordered oriented link L , defined by Ralph Fox [5]. Note that in general,

$$\Delta_L^\sigma(t_1, \dots, t_n) \doteq \Delta_L(t_{\sigma(1)}, \dots, t_{\sigma(\mu)}),$$

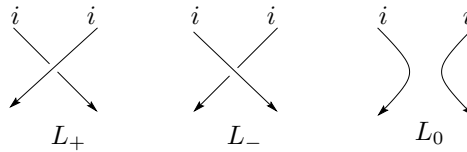
where \doteq stands for the equality modulo the units of Λ_n .

In 1970, John Conway [2] introduced a new invariant of links called the *poten-*

tial function. Given a colored link (L, σ) , its potential function is a well-defined rational function $\nabla_L^\sigma(t_1, \dots, t_n)$ which satisfies

$$\nabla_L^\sigma(t_1, \dots, t_n) \doteq \begin{cases} \frac{1}{t_1 - t_1^{-1}} \Delta_L^\sigma(t_1^2) & \text{if } n = 1; \\ \Delta_L^\sigma(t_1^2, \dots, t_n^2) & \text{if } n > 1. \end{cases}$$

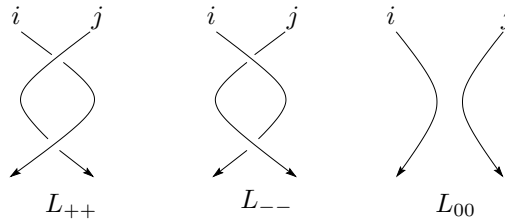
Thus, this invariant is just the Alexander polynomial without the ambiguity concerning multiplication by units of Λ_n . This might seem a minor improvement. However, the potential function has a very remarkable new property: it can be computed directly from a link diagram using skein relations. For example, suppose that (L_+, σ) , (L_-, σ) and (L_0, σ_0) are given by colored diagrams related by a single change as below, where i stands for the color of the components.



Then, their potential functions satisfy the equality

$$\nabla_{L_+}^\sigma - \nabla_{L_-}^\sigma = (t_i - t_i^{-1}) \cdot \nabla_{L_0}^{\sigma_0}.$$

Similarly, if L_{++} , L_{--} and L_{00} differ by the following local operation,



then we have the equality

$$\nabla_{L_{++}}^\sigma + \nabla_{L_{--}}^\sigma = (t_i t_j + t_i^{-1} t_j^{-1}) \cdot \nabla_{L_{00}}^\sigma.$$

Thus, Conway pointed out a preferred representative of the Alexander polynomial, and gave a very easy method for computing it. Unfortunately, his paper contains neither a precise definition of the potential function, nor a proof of its unicity. Quoting Conway: “We have not found a satisfactory *explanation* of these identities.(...) It seems plain that much work remains to be done in the field.”

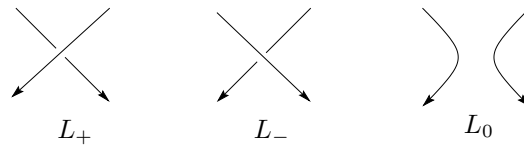
As a particular case of his potential function, Conway defined what he called the *reduced polynomial* $D_L(t)$ of a non-ordered link L by

$$D_L(t) = (t - t^{-1}) \cdot \nabla_L^\sigma(t),$$

where σ is the coloring map with a single color. This invariant was later called the *Conway polynomial* of L ; we will use this terminology. Following from the properties of the general potential function, we have:

- (i) D_L is an invariant of the non-ordered oriented link L ;
- (ii) $D_O(t) = 1$, where O stands for the trivial knot;

- (iii) $D_{L_+}(t) - D_{L_-}(t) = (t - t^{-1}) \cdot D_{L_0}(t)$, where L_+, L_- and L_0 are related by a single crossing change as below.



But again, the paper [2] contains no proof of the consistency of this system of axioms: there is no explicit model for D_L . On the other hand, it is very easy to check that if such a model exists, it is unique.

In 1981, Louis Kauffman [7] found a very simple geometric construction of the Conway polynomial $D_L(t)$, namely

$$D_L(t) = \det(-tA + t^{-1}A^T),$$

where A is any Seifert matrix of the link L and A^T is the transpose of A . This result gave the requested model for D_L ; it also provided the ‘explanation’ of the first skein relation.

Finally, in 1983, Richard Hartley [6] gave a definition of the multivariable potential function $\nabla_L^{\mathcal{G}}$. Quoting his introduction: “Kauffman showed how to define what may be called the reduced potential function of a link in terms of a Seifert matrix. This reduced potential function is an L -polynomial in one variable. However, the potential function is essentially a function of several variables, and I can see no way of generalising Kauffman’s method to obtain the full potential function. Quite a different approach is therefore indicated.” Indeed, Hartley’s definition is obtained by normalizing the Alexander matrix given by the Wirtinger presentation via Fox free differential calculus: it is an algebraic construction, whose relation to Kauffman’s model is not obvious at all.

In this paper, we give a geometric construction of the multivariable potential function which generalizes Kauffman’s definition. It gives the relation between Hartley and Kauffman’s models of the Conway polynomial, and provides an ‘explanation’ of Conway’s skein formulas. It should be pointed out that the fundamental idea of this construction, that is, the use of ‘C-complexes’ for the computation of Alexander invariants of links, is due to Daryl Cooper [3, 4].

2. The potential function of a colored link

Let us denote by ∇_L the potential function of an ordered oriented link L as defined by Hartley [6]; this corresponds to the case of a colored link (L, σ) with $n = \mu$ and $\sigma = \text{id}$. The potential function $\nabla_L^{\mathcal{G}}$ of an arbitrary colored link is given by

$$\nabla_L^{\mathcal{G}}(t_1, \dots, t_n) = \nabla_L(t_{\sigma(1)}, \dots, t_{\sigma(\mu)}).$$

The aim of this section is to present a geometric construction of $\nabla_L^{\mathcal{G}}$. This requires the use of C-complexes as defined by Cooper [3, 4].

Definition. A C-complex for a colored link (L, σ) is a union $F = F_1 \cup \dots \cup F_n$ of compact oriented PL -embedded surfaces in S^3 which satisfies the following properties:

- (i) F is connected;
- (ii) for all i , ∂F_i is equal to the sublink of L of color i ;
- (iii) for all $i \neq j$, $F_i \cap F_j$ is either empty, or a disjoint union of clasps (see Figure 1);
- (iv) for all i, j, k pairwise distinct, $F_i \cap F_j \cap F_k$ is empty.

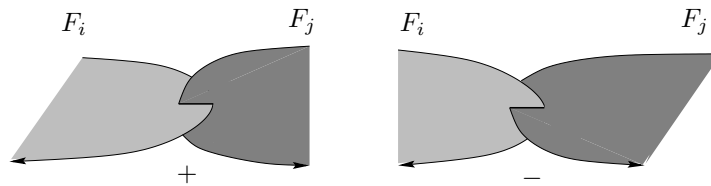
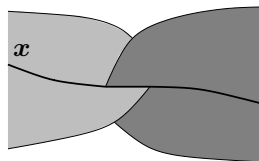


Fig. 1. A positive clasp, and a negative clasp.

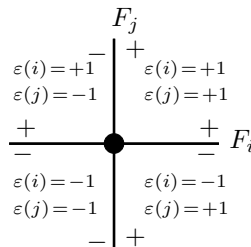
C-complexes are a natural generalization of Seifert surfaces; indeed, if $n = 1$, a C-complex for (L, σ) is simply a Seifert surface for L . Now, we need to define the Seifert forms associated to a C-complex. Let us fix a C-complex F and a map $\epsilon: \{1, \dots, n\} \rightarrow \{\pm 1\}$. A 1-cycle x in F is called a *loop* if it has the following behaviour near a clasp (whenever it crosses one).



Given any element in $H_1 F$, it is possible to represent it by a loop; therefore, we can define a bilinear form $\alpha^\epsilon: H_1 F \times H_1 F \rightarrow \mathbb{Z}$ by

$$\alpha^\epsilon([x], [y]) = lk(x^\epsilon, y),$$

where lk denotes the linking number, x is a loop, and x^ϵ is obtained by pushing x off F in the $\epsilon(i)$ -normal direction off F_i for all $i = 1, \dots, n$. In the neighborhood of a clasp in $F_i \cap F_j$, a loop x can be pushed off F in four different ways, which correspond to the four possible values of $(\epsilon(i), \epsilon(j))$. This is illustrated by the following cross-section of a clasp in $F_i \cap F_j$.



Of course, if $n = 1$, α^- is the usual Seifert form. Let us fix a basis of $H_1 F$ and denote by A_F^ϵ the matrix of α^ϵ . Note that for all ϵ ,

$$A_F^{-\epsilon} = (A_F^\epsilon)^T.$$

We are now in position to state our main result.

Theorem. *The Conway potential function of a colored link (L, σ) is given by*

$$\nabla_L^\sigma(t_1, \dots, t_n) = \text{sgn}(F) \prod_{i=1}^n (t_i - t_i^{-1})^{\chi(F \setminus F_i) - 1} \det(-A_F),$$

where F is any C-complex for (L, σ) , and where

- $\text{sgn}(F)$ is equal to the product of the signs of all the clasps in F (see Figure 1);
- $A_F = \sum_{\epsilon} \epsilon(1) \cdots \epsilon(n) \cdot t_1^{\epsilon(1)} \cdots t_n^{\epsilon(n)} \cdot A_F^\epsilon$, the sum being on the 2^n maps $\epsilon: \{1, \dots, n\} \rightarrow \{\pm 1\}$.

Example 1. If $n = 1$, F is a Seifert surface for the link L and A_F^- is nothing but a usual Seifert matrix A . Since $A_F^+ = A^T$, we have

$$\nabla_L^\sigma(t) = \frac{1}{t - t^{-1}} \cdot \det(-tA^T + t^{-1}A),$$

giving Kauffman's construction of the Conway polynomial

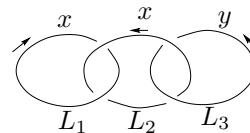
$$D_L(t) = (t - t^{-1}) \cdot \nabla_L^\sigma(t) = \det(-tA + t^{-1}A^T).$$

Example 2. If $n = 2$, let us denote by x, y the variables and by $F = F_x \cup F_y$ a C-complex for (L, σ) . Let us also note $A_F^- = A$ and $A_F^+ = B$. We then have the formula

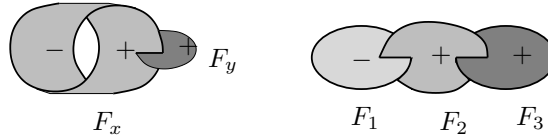
$$\begin{aligned} \nabla_L^\sigma(x, y) &= \text{sgn}(F)(x - x^{-1})^{\chi(F_y) - 1} (y - y^{-1})^{\chi(F_x) - 1} \times \\ &\quad \times \det(-xyA^T + xy^{-1}B^T + x^{-1}yB - x^{-1}y^{-1}A). \end{aligned}$$

Compare Cooper [4, Corollary 2.2].

Example 3. Consider the link $L = L_1 \cup L_2 \cup L_3$ with colors $\sigma(1) = \sigma(2) = x$ and $\sigma(3) = y$ given by the following diagram. We have two different ways to compute the potential function $\nabla_L^\sigma(x, y)$ using our construction. The first one is to consider a C-complex for the colored



link (L, σ) , and to compute $\nabla_L^\sigma(x, y)$ directly; the second one is to calculate $\nabla_L(t_1, t_2, t_3)$ using a C-complex for the ordered link L , and to use the equality $\nabla_L^\sigma(x, y) = \nabla_L(x, x, y)$. Here are C-complexes $F = F_x \cup F_y$ for (L, σ) and $F' = F_1 \cup F_2 \cup F_3$ for the ordered link L .



In the obvious basis of H_1F , we have $A_F^{- -} = A_F^{- +} = (-1)$; therefore, the theorem gives

$$\nabla_L^\sigma(x, y) = (x - x^{-1})^0 \cdot (y - y^{-1})^{-1} \cdot (xy - x^{-1}y - xy^{-1} + x^{-1}y^{-1}) = x - x^{-1}.$$

On the other hand, F' is contractible, giving

$$\nabla_L(t_1, t_2, t_3) = (t_1 - t_1^{-1})^0 \cdot (t_2 - t_2^{-1})^1 \cdot (t_3 - t_3^{-1})^0 = t_2 - t_2^{-1},$$

and we get the same result $\nabla_L^\sigma(x, y) = \nabla_L(x, x, y) = x - x^{-1}$.

3. Proof of the theorem

Let us recall very briefly Kauffman's argument [7]: given an oriented link L , he sets $\Omega_L(t) = \det(-tA + t^{-1}A^T)$, where A is any Seifert surface for L . The first step is to check that Ω_L is an isotopy invariant of L . This is achieved using a well known result: two Seifert surfaces for ambient isotopic links can be obtained from each other by a finite number of ambient isotopies and handle attachments. We are left with the easy proof that Ω_L is unchanged by attaching a handle to F . Then, Kauffman proves that Ω_L satisfies the equality

$$\Omega_{L_+}(t) - \Omega_{L_-}(t) = (t - t^{-1}) \cdot \Omega_{L_0}(t),$$

where L_+, L_- and L_0 are related by a single crossing change as described in the introduction. This relation, along with the value of Ω for the trivial knot, determines Ω for any link. Since this relation was among the formulas announced by Conway for his polynomial D , and since Ω and D have the same value on the trivial knot, they are the same invariant.

We will follow the same procedure for the general case. First, we define Ω_L^σ to be the right-hand side of the equality in the theorem. To show that Ω_L^σ is a well-defined isotopy invariant of colored links, we will generalize Cooper's Isotopy Lemma [4, Lemma 3.2]. A theorem of Murakami [9] states that the potential function ∇_L^σ is determined by several skein relations. Therefore, we will just need to check that Ω_L^σ satisfies these properties in order to have $\Omega = \nabla$.*

*We should also mention that Turaev [11] gave another characterization of Conway's multi-variable potential function. One could also use his set of axioms to prove that Ω_L is indeed the potential function.

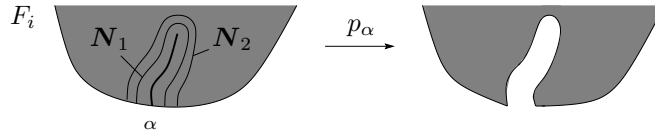


Fig. 2. Push in F_i along an arc α .

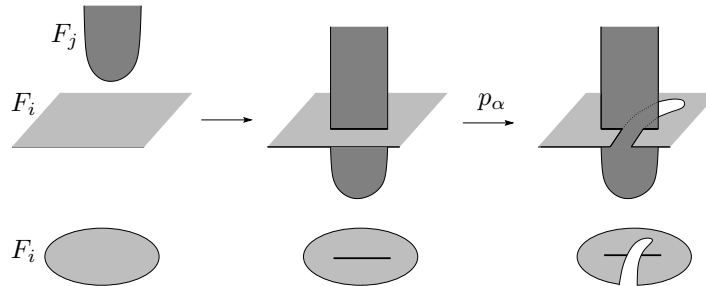


Fig. 3. Add a ribbon intersection, and push along an arc to convert it into two clasps.

As a preliminary, let us define three transformations of C-complexes; the first two were introduced by Cooper. Given a C-complex F and an arc $\alpha: [0, 1] \rightarrow F_i$ with $\alpha^{-1}(\partial F) = \{0\}$, a *push in F_i along α* is an embedding $p_\alpha: F \rightarrow F$ defined as follows: choose $\mathcal{N}_1, \mathcal{N}_2$ two closed regular neighborhoods of α in F_i meeting ∂F regularly such that $\mathcal{N}_1 \subset \text{int } \mathcal{N}_2$ and $\mathcal{N}_2 \cap (\partial F \setminus \partial F_i)$ is empty. Then, p_α restricted to $F \setminus \text{int } \mathcal{N}_2$ is the identity, and p_α maps \mathcal{N}_2 homeomorphically onto $\mathcal{N}_2 \setminus \text{int } \mathcal{N}_1$, as in Figure 2. Note that it is not allowed to push a boundary component through another one.

One can also transform a C-complex by *adding a ribbon intersection*, as described in the left part of Figure 3. The result is no longer a C-complex, but it can be transformed into one by pushing in F_i along an arc through the ribbon intersection: this converts the ribbon intersection into a pair of clasps (see the right part of Figure 3). The lower part of this figure shows the same transformations as the upper part, with the Seifert surface F_i represented as a disc.

Finally, the transformation illustrated in Figure 4 is called to *pass through a clasp*. Again, the lower part of this figure depicts the same transformation, with a disc representing the surface F_k . Note that these three transformations move the link L only up to an ambient isotopy. Therefore, they can be understood as keeping $L = \partial F$ fixed.

We are now ready to start the proof of the theorem. Let (L, σ) be a colored link in S^3 .

Lemma 1. *Let F_1, \dots, F_n be a collection of Seifert surfaces for the colored link (L, σ) (i.e. for all i , ∂F_i is equal to the sublink of L of color i). Then, each F_i can be isotoped keeping its boundary fixed to give a C-complex for (L, σ) .*

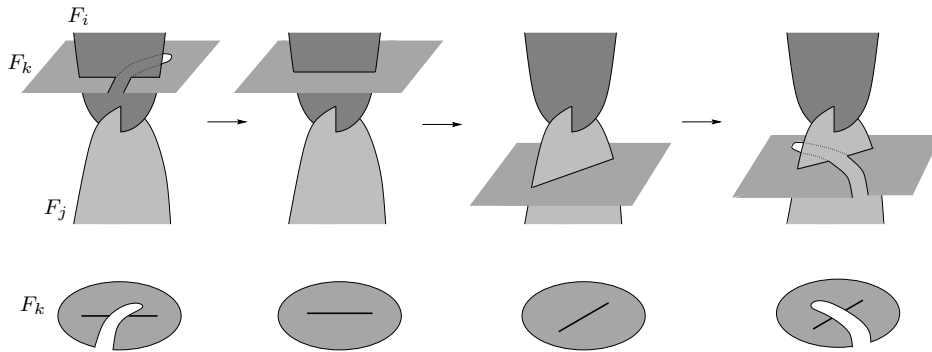


Fig. 4. Pass through a clasp.

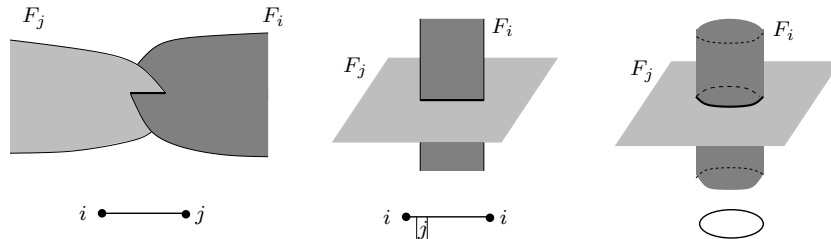


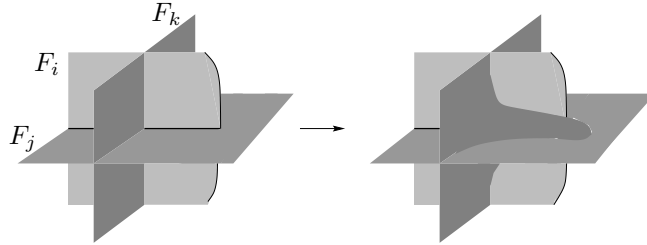
Fig. 5. The three types of intersections $F_i \cap F_j$: a clasp, a ribbon and a circle.

Proof. Although it is an easy generalization of Cooper’s [4, Lemma 3.1], it is worth giving the proof in some details. Let F_1, \dots, F_n be a collection of Seifert surfaces for (L, σ) . By isotopies, it may be assumed that they intersect transversally; therefore:

- for all $i \neq j$, $F_i \cap F_j$ is a finite union of intervals (*clasps* or *ribbons*) and *circles* (see Figure 5);
- for all i, j, k pairwise distinct, $F_i \cap F_j \cap F_k$ is a finite number of points (called *triple points*);
- every quadruple intersection is empty.

By pushing along arcs, it is possible to remove every circle intersection as follows. First, push along an arc on F_1 through one of the outermost circles on F_1 , avoiding the triple points: it will turn this circle intersection into a ribbon intersection. This method allows to remove every circle intersection on F_1 . Use the same procedure for F_2, \dots, F_n , turning every circle into a ribbon.

Now that all the intersections $F_i \cap F_j$ are finite unions of intervals, it is easy to remove all the triple points: pick an interval, number its possible triple points starting at one end and finishing at the other, and remove them in this order using the isotopy illustrated below.



By pushing along arcs, it is possible to transform all the ribbon intersections into pairs of clasps, as on the right part of Figure 3. We now have a union $F = F_1 \cup \dots \cup F_n$ which satisfies conditions (ii), (iii) and (iv) in the definition of a C-complex. By adding ribbon intersections and pushing along arcs (as in Figure 3), we can make F connected. \square

Given F a C-complex for (L, σ) , let us define

$$\Omega_F(t_1, \dots, t_n) = \text{sgn}(F) \prod_{i=1}^n (t_i - t_i^{-1})^{\chi(F \setminus F_i) - 1} \det(-A_F),$$

where $\text{sgn}(F)$ is equal to the product of the signs of all the clasps in F , and where $A_F = \sum_{\epsilon} \epsilon(1) \dots \epsilon(n) \cdot t_1^{\epsilon(1)} \dots t_n^{\epsilon(n)} \cdot A_F^{\epsilon}$, the sum being on the 2^n different maps $\epsilon: \{1, \dots, n\} \rightarrow \{\pm 1\}$. To prove that Ω_F does not depend on the choice of F , we need two lemmas. The first one is well known (see e.g. [8, Theorem 8.2]).

Lemma 2. *Two Seifert surfaces for a fixed link L can be transformed into each other by a finite number of the following operations and their inverses:*

- ambient isotopy keeping L fixed;
- addition of a handle. \square

The second is a generalization of Cooper’s Isotopy Lemma [4, Lemma 3.2], which corresponds to the case $\mu = n = 2$.

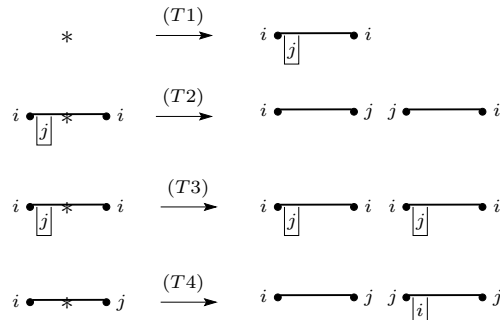
Lemma 3. *Let $F = F_1 \cup \dots \cup F_n$ and $F' = F'_1 \cup \dots \cup F'_n$ be two C-complexes for a fixed colored link (L, σ) . Suppose that, for all i , F_i is ambient isotopic to F'_i keeping their boundary fixed. Then, F and F' can be transformed into each other by a finite number of the following operations and their inverses:*

- (M0) ambient isotopy keeping L fixed;
- (M1) addition of a ribbon intersection, followed by a push along an arc through this intersection;
- (M2) pass through a clasp.

Proof. By [3, Lemma 5.2], there are other ambient isotopies $F_i \sim F'_i$ (*rel* ∂F_i) such that the surfaces F_1, \dots, F_n remain transverse throughout the isotopies except at a finite number of critical points, each of which occurs at a different time. Let us carry out these new isotopies one after the other: the result is an ambient isotopy $F \sim F'$ (*rel* L) with finitely many critical points. Each critical point corresponds to a change in the *singularity* of F , that is, in the intersections $F_i \cap F_j$ and $F_i \cap F_j \cap F_k$ (the isotopies may be chosen avoiding quadruple intersections). We need to list all the possible transformations of these intersections, and convert them into combinations of the operations stated in the lemma.

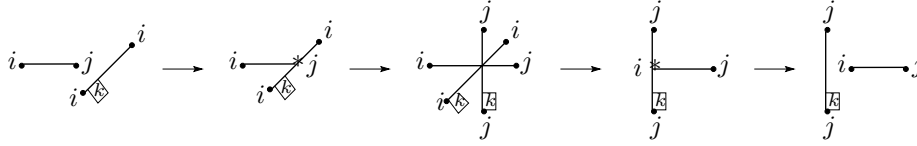
Recall that the connected components of $F_i \cap F_j$ can be of the following three types: a clasp, a ribbon, or a circle (see Figure 5). The first step is to show that the isotopy may be chosen such that no circle intersection appears. The idea is to transform the isotopy by pushing along wandering arcs: a push in F_i along a wandering arc is an embedding $p_\alpha: F_i \times I \rightarrow F_i \times I$ such that p_α restricted to $F_i \times \{t\}$ is a push along an arc $\alpha_t: I \rightarrow F_i$. A circle intersection in $F_i \cap F_j$ can be avoided as follows: push in F_i along a wandering arc to the circle just before its appearance, keep the arc breaking the circle during the whole ‘lifetime’ of the circle, and remove the arc after the ‘death’ of the circle. Therefore, it may be assumed that all the intersections $F_i \cap F_j$ are clasps and ribbons.

Given any $i \neq j$, the number of clasps in $F_i \cap F_j$ is equal modulo 2 to the linking number $lk(\partial F_i, \partial F_j)$. Therefore, the parity of this number must be preserved. Considering critical points that are not triple points, we are left with the following possible transformations, where $*$ indicates the critical point.



Transformation $T1$ is the addition of a ribbon intersection, while $T2$ is a push along an arc through a ribbon intersection. Clearly, $T3$ can be converted into $T2 + T4 - T2$, where $-T2$ denotes the inverse of $T2$. Finally, $T4$ may be turned into $T1$ and $T2$ via a push in F_i along a wandering arc.

Let us now consider critical points that are triple points, and denote by $T5$ the move illustrated by the second arrow in Figure 4. Here is the ‘movie’ of $T5$, where the asterisk denotes the critical points of ‘birth’ and ‘death’ of the triple point.



Of course, there are other transformations involving triple points; let us show that they can be converted into combinations of $T1$, $T2$ and $T5$. By the beginning of the proof, we just need to convert such a move into combinations of $T5$ and of transformations involving no triple points. Let us consider a transformation of a C-complex F involving a triple point $x \in F_1 \cap F_2 \cap F_3$, and let us focus on the connected component S of the singularity of F containing x . By pushing along wandering arcs, it may be assumed that the only critical points on S during the whole ‘lifetime’ of x are the two critical points of ‘birth’ and ‘death’ of x . The idea is now to list all the possible configurations of S (as in the middle of the ‘movie’ of $T5$), and for every such S , to give all the different moves involving this S . Finally, we get seven possible configurations of S , and a dozen of (essentially) different moves. Then, it is an easy but tedious exercise to check that all these moves can be converted into combinations of $T5$ and of transformations that do not involve triple points.

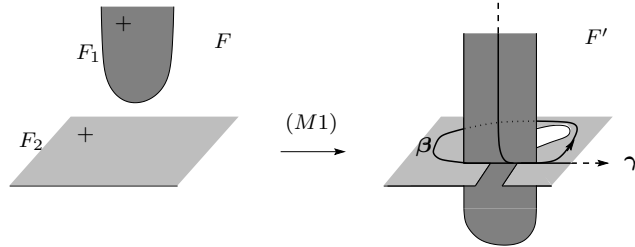
Hence, two C-complexes F and F' as in the statement of the lemma can be transformed into each other by a finite number of the operations $M0$, $T1$, $T2$, $T5$ and their inverses. Since F and F' are C-complexes, the transformations must start with $T1$ or $-T2$ and finish with $T2$ or $-T1$. Now, every combination of $\pm T1$, $\pm T2$ and $\pm T5$ starting with $T1$ or $-T2$ and finishing with $T2$ or $-T1$ can be written as a combination of $\pm M1 = \pm(T1 + T2)$ and $\pm M2 = \pm(-T2 + T5 + T2)$. This settles the proof. \square

Lemma 4. *Let F and F' be two C-complexes for isotopic colored links (L, σ) and (L', σ') . Then, Ω_F and $\Omega_{F'}$ are equal.*

Proof. Via an ambient isotopy (which does not change Ω_F), we can assume that $\partial F = L = L' = \partial F'$. By Lemma 2, F_i and F'_i are related by ambient isotopies (keeping $\partial F_i = \partial F'_i$ fixed) and addition of handles. These handle additions are performed along arcs α embedded in $S^3 \setminus F_i$; such an arc is isotopic (in $S^3 \setminus F_i$) to an arc α' embedded in $S^3 \setminus F$. In other words, a handle attachment on F_i can be performed avoiding $F \setminus F_i$. Let us call $M3$ the addition of a handle on F_i avoiding the rest of F . Now, for every ambient isotopy between F_i and F'_i , we can apply Lemma 3. Therefore, we just need to check that Ω_F remains unchanged if F undergoes one of the moves $M1$, $M2$ or $M3$.

(M1) Let F' be a C-complex obtained from F via the move $M1$. Clearly, $H_1 F' \simeq \mathbb{Z}\beta \oplus \mathbb{Z}\gamma \oplus H_1 F$, with β and γ as follows.

Among the new clasps created, one is positive and the other one is negative;



therefore, $\text{sgn}(F') = -\text{sgn}(F)$. On the other hand,

$$\chi(F' \setminus F'_i) = \begin{cases} \chi(F \setminus F_i) & \text{if } i = 1, 2; \\ \chi(F \setminus F_i) - 2 & \text{if } i > 2. \end{cases}$$

Since

$$A_{F'}^\epsilon = \begin{matrix} \beta & \gamma \\ \beta & \delta(\epsilon) & 0 \\ \gamma & \delta(-\epsilon) & * & * \\ & 0 & * & A_F^\epsilon \end{matrix}, \quad \text{with } \delta(\epsilon) = \begin{cases} -1 & \text{if } \epsilon(1) = \epsilon(2) = +1; \\ 0 & \text{else,} \end{cases}$$

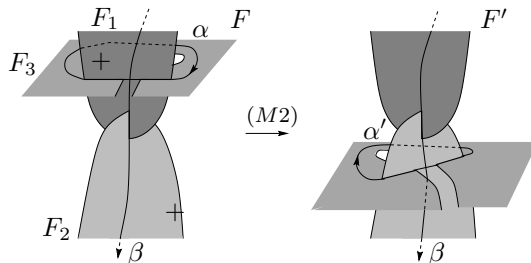
it follows

$$-A_{F'} = \begin{pmatrix} 0 & t_1 t_2 \prod_{i>2} (t_i - t_i^{-1}) & 0 \\ t_1^{-1} t_2^{-1} \prod_{i>2} (t_i - t_i^{-1}) & * & * \\ 0 & * & -A_F \end{pmatrix}.$$

Therefore,

$$\begin{aligned} \Omega_{F'}(t_1, \dots, t_n) &= \text{sgn}(F') \prod_i (t_i - t_i^{-1})^{\chi(F' \setminus F'_i) - 1} \det(-A_{F'}) \\ &= -\text{sgn}(F) \frac{\prod_i (t_i - t_i^{-1})^{\chi(F \setminus F_i) - 1}}{\prod_{i>2} (t_i - t_i^{-1})^2} (-1) \prod_{i>2} (t_i - t_i^{-1})^2 \det(-A_F) \\ &= \Omega_F(t_1, \dots, t_n). \end{aligned}$$

(M2) Let \$F\$ and \$F'\$ be C-complexes as illustrated below.



Here, $H_1 F$ and $H_1 F'$ are canonically isomorphic, and $\text{sgn}(F') = \text{sgn}(F)$. Furthermore,

$$\chi(F' \setminus F'_i) = \begin{cases} \chi(F \setminus F_1) - 2 & \text{if } i = 1; \\ \chi(F \setminus F_2) + 2 & \text{if } i = 2; \\ \chi(F \setminus F_i) & \text{if } i > 2. \end{cases}$$

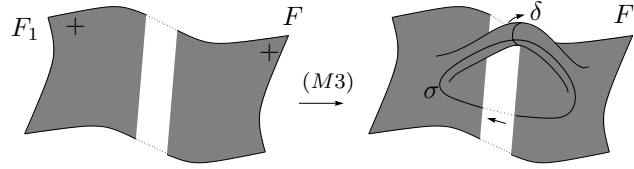
On the other hand, given any loop β as above, we have the equalities

$$\ell k(\alpha^\epsilon, \beta) = \begin{cases} 1 & \text{if } \epsilon(1) = +1; \\ 0 & \text{else,} \end{cases} \quad \text{and} \quad \ell k((\alpha')^\epsilon, \beta) = \begin{cases} 1 & \text{if } \epsilon(2) = +1; \\ 0 & \text{else.} \end{cases}$$

This implies that $(t_1 - t_1^{-1})^2 \det(-A_{F'}) = (t_2 - t_2^{-1})^2 \det(-A_{F'})$. Therefore,

$$\begin{aligned} \Omega_{F'}(t_1, \dots, t_n) &= \text{sgn}(F') \prod_i (t_i - t_i^{-1})^{\chi(F' \setminus F'_i) - 1} \det(-A_{F'}) \\ &= \text{sgn}(F) \prod_i (t_i - t_i^{-1})^{\chi(F \setminus F_i) - 1} \frac{(t_2 - t_2^{-1})^2}{(t_1 - t_1^{-1})^2} \det(-A_{F'}) \\ &= \Omega_F(t_1, \dots, t_n). \end{aligned}$$

(M3) Consider F' a C-complex obtained from F by attaching a handle on F_1 . This time, $H_1 F' \simeq \mathbb{Z}\delta \oplus \mathbb{Z}\sigma \oplus H_1 F$, with δ and σ as follows.



Trivially, $\text{sgn}(F') = \text{sgn}(F)$, and

$$\chi(F' \setminus F'_i) = \begin{cases} \chi(F \setminus F_i) & \text{if } i = 1; \\ \chi(F \setminus F_i) - 2 & \text{if } i > 1. \end{cases}$$

Since

$$A_{F'}^\epsilon = \begin{matrix} & \delta & \sigma \\ \delta & \begin{pmatrix} 0 & \pi(\epsilon) & 0 \\ \pi(-\epsilon) & * & * \\ 0 & * & A_F^\epsilon \end{pmatrix} \end{matrix}, \quad \text{with} \quad \pi(\epsilon) = \begin{cases} -1 & \text{if } \epsilon(1) = +1; \\ 0 & \text{else,} \end{cases}$$

it follows

$$-A_{F'} = \begin{pmatrix} 0 & t_1 \prod_{i>1} (t_i - t_i^{-1}) & 0 \\ -t_1^{-1} \prod_{i>1} (t_i - t_i^{-1}) & * & * \\ 0 & * & -A_F \end{pmatrix}.$$

Hence, we have the equality

$$\begin{aligned} \Omega_{F'}(t_1, \dots, t_n) &= \operatorname{sgn}(F') \prod_i (t_i - t_i^{-1})^{\chi(F' \setminus F'_i) - 1} \det(-A_{F'}) \\ &= \operatorname{sgn}(F) \frac{\prod_i (t_i - t_i^{-1})^{\chi(F \setminus F_i) - 1}}{\prod_{i>1} (t_i - t_i^{-1})^2} \prod_{i>1} (t_i - t_i^{-1})^2 \det(-A_F) \\ &= \Omega_F(t_1, \dots, t_n). \end{aligned}$$

This concludes the proof. □

Therefore, Ω_F is an isotopy invariant of the colored link (L, σ) ; let us denote it by Ω_L^σ .

Lemma 5. $\Omega_L^\sigma = \nabla_L^\sigma$.

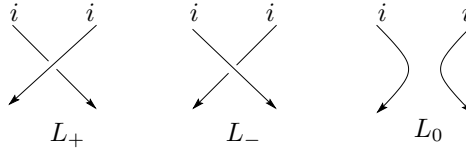
Proof. Murakami's characterization theorem [9] states that ∇_L^σ is determined uniquely by the following six relations, where the letters i, j and k denote the colors of the components.

$$\nabla_O^\sigma = \frac{1}{t_i - t_i^{-1}}, \tag{RI}$$

where (O, σ) denotes the trivial knot with color i .

$$\nabla_{L_+}^\sigma - \nabla_{L_-}^\sigma = (t_i - t_i^{-1}) \cdot \nabla_{L_0}^{\sigma_0}, \tag{RII}$$

where L_+, L_- and L_0 differ by the following local operation.

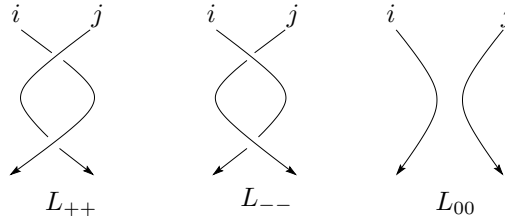


$$\nabla_{L \sqcup O}^\sigma = 0, \tag{RIII}$$

where $L \sqcup O$ denotes the disjoint union of L and a trivial knot.

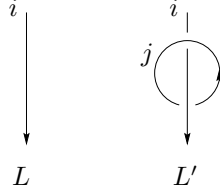
$$\nabla_{L_{++}}^\sigma + \nabla_{L_{--}}^\sigma = (t_i t_j + t_i^{-1} t_j^{-1}) \cdot \nabla_{L_{00}}^\sigma, \tag{RIV}$$

where L_{++}, L_{--} and L_{00} differ by the following local operation.



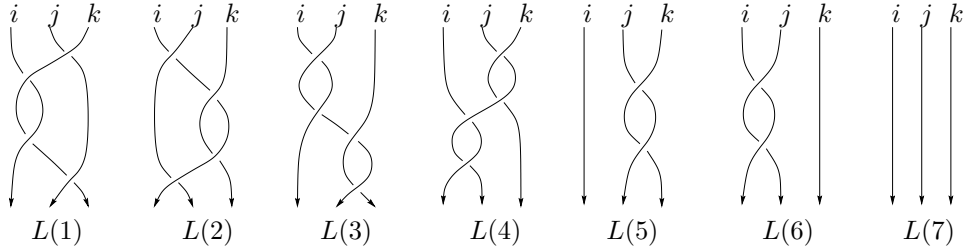
$$\nabla_{L'}^{\sigma'} = (t_i - t_i^{-1}) \cdot \nabla_L^{\sigma}, \tag{RV}$$

where L' is obtained from L by the local operation given above.



$$\begin{aligned} & (t_i + t_i^{-1})(t_j - t_j^{-1})\nabla_{L(1)}^{\sigma} - (t_j - t_j^{-1})(t_k + t_k^{-1})\nabla_{L(2)}^{\sigma} \\ & - (t_i^{-1}t_k - t_it_k^{-1})(\nabla_{L(3)}^{\sigma} + \nabla_{L(4)}^{\sigma}) + (t_i^{-1}t_jt_k - t_it_j^{-1}t_k^{-1})(t_k + t_k^{-1})\nabla_{L(5)}^{\sigma} \\ & - (t_i + t_i^{-1})(t_it_jt_k^{-1} - t_i^{-1}t_j^{-1}t_k)\nabla_{L(6)}^{\sigma} - (t_i^{-2}t_k^2 - t_i^2t_k^{-2})\nabla_{L(7)}^{\sigma} = 0, \end{aligned} \tag{RVI}$$

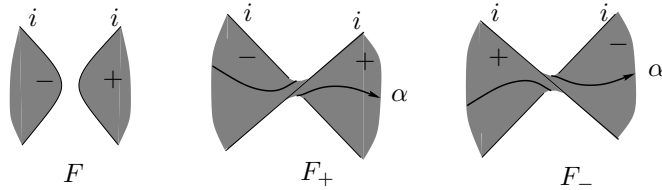
where $L(1)$, $L(2)$, $L(3)$, $L(4)$, $L(5)$, $L(6)$ and $L(7)$ differ by the following local operation.



By this theorem, we just need to show that Ω_L^{σ} satisfies the relations RI to RVI .

(RI) Since a 2-disc is a C-complex for the trivial knot, we have $\Omega_O^{\sigma}(t_i) = \frac{1}{t_i - t_i^{-1}}$.

(RII) Let F be a C-complex for L_0 ; C-complexes F_+ and F_- for L_+ and L_- are obtained from F as follows.



Clearly, $H_1F_+ \simeq H_1F_- \simeq \mathbb{Z}\alpha \oplus H_1F$, and for all ϵ ,

$$A_{F_-}^{\epsilon} = \begin{pmatrix} * & * \\ * & A_F^{\epsilon} \end{pmatrix} = A_{F_+}^{\epsilon} + \begin{pmatrix} 1 & 0 \\ 0 & 0 \end{pmatrix}.$$

Therefore,

$$A_{F_-} = \begin{pmatrix} * & * \\ * & A_F \end{pmatrix} = A_{F_+} + \begin{pmatrix} \prod_j (t_j - t_j^{-1}) & 0 \\ 0 & 0 \end{pmatrix},$$

giving $\det(-A_{F_-}) = \det(-A_{F_+}) - \prod_j (t_j - t_j^{-1}) \det(-A_F)$. Since $\text{sgn}(F_+) = \text{sgn}(F_-) = \text{sgn}(F)$ and

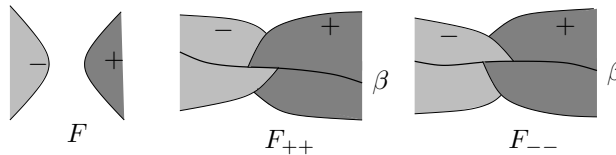
$$\chi(F_+ - (F_+)_j) = \chi(F_- - (F_-)_j) = \begin{cases} \chi(F \setminus F_j) - 1 & \text{if } j \neq i; \\ \chi(F \setminus F_i) & \text{if } j = i, \end{cases}$$

we get the equality

$$\begin{aligned} \Omega_{L_+}^\sigma - \Omega_{L_-}^\sigma &= \text{sgn}(F) \prod_j (t_j - t_j^{-1})^{\chi(F \setminus F_j) - 2} (t_i - t_i^{-1}) (\det(-A_{F_+}) - \det(-A_{F_-})) \\ &= (t_i - t_i^{-1}) \cdot \text{sgn}(F) \prod_j (t_j - t_j^{-1})^{\chi(F \setminus F_j) - 1} \det(-A_F) \\ &= (t_i - t_i^{-1}) \cdot \Omega_{L_0}^{\sigma_0}. \end{aligned}$$

(RIII) Choose F a C-complex for L . A C-complex F' for $L \sqcup O$ is obtained from $F \sqcup D^2$ either by the move $M1$ (if O is the only component of its color) or by connecting F_i and D^2 with a handle (if O is of color i). In both cases, some 1-cycle x is created, such that $\ell k(x^\epsilon, y) = 0$ for all ϵ and all $y \in H_1 F'$. Therefore, $\Omega_{L \sqcup O}^\sigma$ vanishes.

(RIV) If the colors i and j are equal, this relation follows easily from *RII*. Thus, we can assume that $i = 1$ and $j = 2$. Given F a C-complex for L_{00} , C-complexes F_{++} for L_{++} and F_{--} for L_{--} are obtained as follows.



This time, $H_1 F_{++} \simeq H_1 F_{--} \simeq \mathbb{Z}\beta \oplus H_1 F$, and for all ϵ , $A_{F_{--}}^\epsilon = \begin{pmatrix} * & * \\ * & A_F^\epsilon \end{pmatrix}$; on the other hand

$$A_{F_{--}}^\epsilon = \begin{cases} A_{F_{++}}^\epsilon & \text{if } (\epsilon(1), \epsilon(2)) = (-1, +1) \text{ or } (+1, -1); \\ A_{F_{++}}^\epsilon + \begin{pmatrix} 1 & 0 \\ 0 & 0 \end{pmatrix} & \text{if } (\epsilon(1), \epsilon(2)) = (-1, -1) \text{ or } (+1, +1). \end{cases}$$

Therefore, $\det(-A_{F_{--}}) = \det(-A_{F_{++}}) - (t_1 t_2 + t_1^{-1} t_2^{-1}) \prod_{i>2} (t_i - t_i^{-1}) \det(-A_F)$. Since $\text{sgn}(F_{++}) = \text{sgn}(F) = -\text{sgn}(F_{--})$ and

$$\chi(F_{++} - (F_{++})_i) = \chi(F_{--} - (F_{--})_i) = \begin{cases} \chi(F \setminus F_i) & \text{if } i = 1, 2; \\ \chi(F \setminus F_i) - 1 & \text{if } i > 2, \end{cases}$$

we get the equality

$$\begin{aligned}\Omega_{L_{++}}^\sigma + \Omega_{L_{--}}^\sigma &= \operatorname{sgn}(F) \prod_i (t_i - t_i^{-1})^{\chi(F_{++} - (F_{++})_i) - 1} (\det(-A_{F_{++}}) - \det(-A_{F_{--}})) \\ &= (t_1 t_2 + t_1^{-1} t_2^{-1}) \cdot \operatorname{sgn}(F) \prod_i (t_i - t_i^{-1})^{\chi(F \setminus F_i) - 1} \det(-A_F) \\ &= (t_1 t_2 + t_1^{-1} t_2^{-1}) \cdot \Omega_{L_{00}}^\sigma.\end{aligned}$$

(RV) Once again, if $i = j$, this relation follows from *RIII*. So, let us suppose that $i = 1$ and $j = 2$. A C-complex F' for L' is obtained from a C-complex F for L by adding a disc with a positive clasp. From the equalities $H_1 F' = H_1 F$, $\operatorname{sgn}(F') = \operatorname{sgn}(F)$ and

$$\chi(F' \setminus F'_i) = \begin{cases} \chi(F \setminus F_i) + 1 & \text{if } i = 1; \\ \chi(F \setminus F_i) & \text{if } i > 1, \end{cases}$$

it follows

$$\begin{aligned}\Omega_{L'}^{\sigma'} &= \operatorname{sgn}(F') \prod_i (t_i - t_i^{-1})^{\chi(F' \setminus F'_i) - 1} \det(-A_{F'}) \\ &= (t_1 - t_1^{-1}) \cdot \operatorname{sgn}(F) \prod_i (t_i - t_i^{-1})^{\chi(F \setminus F_i) - 1} \det(-A_F) \\ &= (t_1 - t_1^{-1}) \cdot \Omega_L^\sigma.\end{aligned}$$

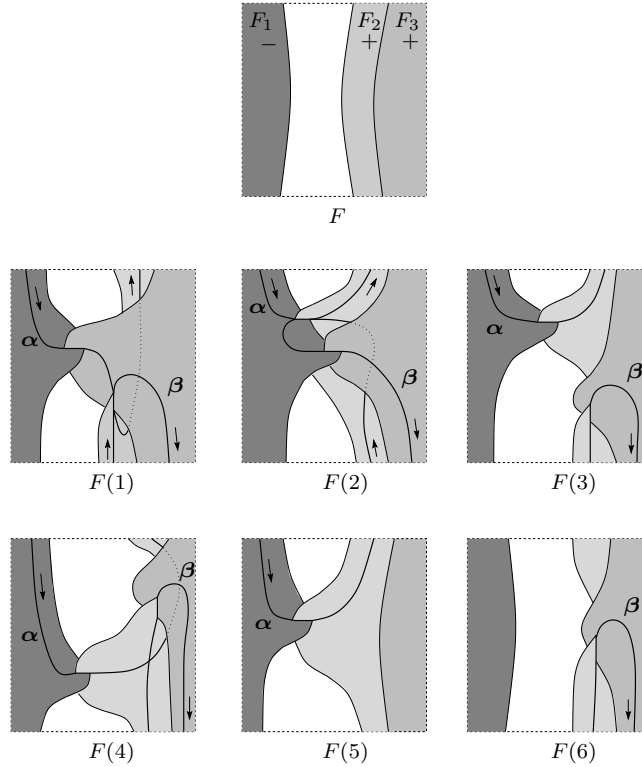
(RVI) Let us suppose that $i = 1$, $j = 2$ and $k = 3$. C-complexes $F(i)$ for $L(i)$ ($i = 1, \dots, 6$) are obtained from a given C-complex F for $L(7)$ as follows.

Clearly, $H_1 F(1) \simeq H_1 F(2) \simeq H_1 F(3) \simeq H_1 F(4) \simeq \mathbb{Z}\alpha \oplus \mathbb{Z}\beta \oplus H_1 F$, and $H_1 F(5) \simeq \mathbb{Z}\alpha \oplus H_1 F$, $H_1 F(6) \simeq \mathbb{Z}\beta \oplus H_1 F$. By the equalities

$$\operatorname{sgn}(F(i)) = \operatorname{sgn}(F) \quad \text{for all } i,$$

and

$$\begin{aligned}\chi(F(1) \setminus F(1)_i) &= \begin{cases} \chi(F \setminus F_i) - 1 & \text{if } i = 1, 2; \\ \chi(F \setminus F_3) & \text{if } i = 3; \\ \chi(F \setminus F_i) - 2 & \text{if } i > 3, \end{cases} \\ \chi(F(2) \setminus F(2)_i) &= \begin{cases} \chi(F \setminus F_1) & \text{if } i = 1; \\ \chi(F \setminus F_i) - 1 & \text{if } i = 2, 3; \\ \chi(F \setminus F_i) - 2 & \text{if } i > 3, \end{cases} \\ \chi(F(3) \setminus F(3)_i) &= \begin{cases} \chi(F \setminus F_i) - 1 & \text{if } i = 1, 3; \\ \chi(F \setminus F_2) & \text{if } i = 2; \\ \chi(F \setminus F_i) - 2 & \text{if } i > 3, \end{cases} = \chi(F(4) \setminus F(4)_i),\end{aligned}$$



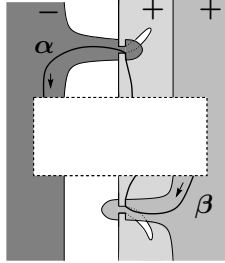
$$\chi(F(5) \setminus F(5)_i) = \begin{cases} \chi(F \setminus F_i) & \text{if } i = 1, 2; \\ \chi(F \setminus F_i) - 1 & \text{if } i > 2, \end{cases}$$

$$\chi(F(6) \setminus F(6)_i) = \begin{cases} \chi(F \setminus F_i) & \text{if } i = 2, 3; \\ \chi(F \setminus F_i) - 1 & \text{if } i = 1 \text{ or } i > 2, \end{cases}$$

we need to check the following equation, where T_i denotes $(t_i - t_i^{-1})$ and $T = \prod_{i>3}(t_i - t_i^{-1})$:

$$\begin{aligned} & (t_1 + t_1^{-1}) \left(\frac{\det(-A_{F(1)})}{T_1 T^2} - (t_1 t_2 t_3^{-1} - t_1^{-1} t_2^{-1} t_3) \frac{\det(-A_{F(6)})}{T_1 T} \right) \\ & - (t_3 + t_3^{-1}) \left(\frac{\det(-A_{F(2)})}{T_3 T^2} - (t_1^{-1} t_2 t_3 - t_1 t_2^{-1} t_3^{-1}) \frac{\det(-A_{F(5)})}{T_3 T} \right) \\ & = (t_1^{-1} t_3 - t_1 t_3^{-1}) \left(\frac{\det(-A_{F(3)}) + \det(-A_{F(4)})}{T_1 T_3 T^2} + (t_1^{-1} t_3 + t_1 t_3^{-1}) \det(-A_F) \right). \end{aligned}$$

Without loss of generality, it may be assumed that F has the following form near the place of the skin relation.



It is then easy to compute the matrices $A_{F(i)}$:

$$-A_{F(1)} = \begin{matrix} & \alpha & & \beta \\ \alpha & \left(\begin{array}{ccc} (t_1 t_2 t_3^{-1} - t_1^{-1} t_2^{-1} t_3) T & -T_1 t_2 t_3 T & v_\alpha T_3 T \\ -T_1 t_2^{-1} t_3^{-1} T & 0 & v_\beta T_1 T \\ w_\alpha T_3 T & w_\beta T_1 T & A_F \end{array} \right) & & \end{matrix},$$

$$-A_{F(2)} = \begin{matrix} & \alpha & & \beta \\ \alpha & \left(\begin{array}{ccc} 0 & -t_1 t_2 T_3 T & v_\alpha T_3 T \\ -t_1^{-1} t_2^{-1} T_3 T & (t_1^{-1} t_2 t_3 - t_1 t_2^{-1} t_3^{-1}) & v_\beta T_1 T \\ w_\alpha T_3 T & w_\beta T_1 T & A_F \end{array} \right) & & \end{matrix},$$

$$-A_{F(3)} = \begin{matrix} & \alpha & & \beta \\ \alpha & \left(\begin{array}{ccc} 0 & 0 & v_\alpha T_3 T \\ 0 & 0 & v_\beta T_1 T \\ w_\alpha T_3 T & w_\beta T_1 T & A_F \end{array} \right) & & \end{matrix},$$

$$-A_{F(4)} = \begin{matrix} & \alpha & & \beta \\ \alpha & \left(\begin{array}{ccc} 0 & T_1 t_2 T_3 T & v_\alpha T_3 T \\ -T_1 t_2^{-1} T_3 T & 0 & v_\beta T_1 T \\ w_\alpha T_3 T & w_\beta T_1 T & A_F \end{array} \right) & & \end{matrix},$$

$$-A_{F(5)} = \begin{matrix} & \alpha \\ \alpha & \left(\begin{array}{cc} 0 & v_\alpha T_3 T \\ w_\alpha T_3 T & A_F \end{array} \right) & \end{matrix},$$

$$-A_{F(6)} = \begin{matrix} & \beta \\ \beta & \left(\begin{array}{cc} 0 & v_\beta T_1 T \\ w_\beta T_1 T & A_F \end{array} \right) & \end{matrix}.$$

The equality can then be checked by direct computation. This concludes Lemma 5, and the theorem is proved. \square

4. Applications

In his fundamental paper [2], Conway states various properties of his potential function. We show now that these properties follow immediately from our construction.

Proposition 1. $\nabla_L^\sigma(t_1^{-1}, \dots, t_n^{-1}) = (-1)^\mu \nabla_L^\sigma(t_1, \dots, t_n)$.

Proof. By the theorem, we easily get $\nabla_L(t_1^{-1}, \dots, t_\mu^{-1}) = (-1)^\nu \nabla_L(t_1, \dots, t_\mu)$, with

$$\nu = \sum_{i=1}^n (\chi(F \setminus F_i) - 1) + n \cdot \text{rk } H_1 F.$$

For $i = 1, \dots, n$, let us denote by μ_i the number of components of L with color i . Computing modulo 2, we have

$$\begin{aligned} \nu &\equiv \sum_{i=1}^n \chi(F \setminus F_i) + n \cdot (\text{rk } H_1 F + 1) \\ &\equiv \sum_{i=1}^n (\chi(F) + \overbrace{\chi(F_i)}^{\equiv \mu_i} + \chi(F_i \cap (F \setminus F_i))) + n \cdot \chi(F) \\ &\equiv \sum_{i=1}^n \mu_i + \sum_{i=1}^n \chi(F_i \cap (F \setminus F_i)) = \mu + 2 \cdot \#\{\text{clasps}\} \equiv \mu, \end{aligned}$$

and the proposition is proved. □

Proposition 2. $\nabla_L^\sigma(-t_1, \dots, -t_n) = (-1)^\mu \nabla_L^\sigma(t_1, \dots, t_n)$.

Proof. Exactly as Proposition 1. □

Proposition 3. *Let (L, σ) be a colored link with $\#\sigma^{-1}(1) = \mu_1$, and let (L', σ) be the same link with the opposite orientation on the sublink of color 1. Then, we have the equality*

$$\nabla_{L'}^\sigma(t_1, \dots, t_n) = (-1)^{\mu_1} \nabla_L^\sigma(t_1^{-1}, t_2, \dots, t_n).$$

Proof. If $F = F_1 \cup \dots \cup F_n$ is a C-complex for L , a C-complex for L' is given by $F' = (-F_1) \cup F_2 \cup \dots \cup F_n$. Since $\text{sgn}(F') = (-1)^{\#\{\text{clasps of } F_1\}} \cdot \text{sgn}(F) = (-1)^{\chi(F_1 \cap (F \setminus F_1))} \cdot \text{sgn}(F)$ and $A_{F'}^\epsilon = A_F^{\epsilon'}$ with $\epsilon'(1) = -\epsilon(1)$ and $\epsilon'(i) = \epsilon(i)$ for $i > 1$, we have

$$\nabla_{L'}(t_1, \dots, t_\mu) = (-1)^\nu \nabla_L(t_1^{-1}, t_2, \dots, t_\mu),$$

where

$$\begin{aligned} \nu &= \chi(F_1 \cap (F \setminus F_1)) + \chi(F \setminus F_1) - 1 + \text{rk } H_1 F \\ &\equiv \chi(F) - \chi(F \setminus F_1) + \chi(F_1 \cap (F \setminus F_1)) = \chi(F_1) \equiv \mu_1. \end{aligned}$$

This settles the proof. \square

Corollary 1. $\nabla_{-L}^\sigma(t_1, \dots, t_n) = (-1)^\mu \nabla_L^\sigma(t_1^{-1}, \dots, t_n^{-1})$. \square

Corollary 2. $\nabla_{-L}^\sigma = \nabla_L^\sigma$. \square

Proposition 4. $\nabla_{m(L)}^\sigma = (-1)^{\mu+1} \nabla_L^\sigma$, where $m(L)$ denotes the mirror image of L .

Proof. The mirror image $m(F)$ of a C-complex F for L provides a C-complex for $m(L)$. The sign of every clasp and of every linking number is changed, giving $A_{m(F)}^\epsilon = -A_F^\epsilon$ for all ϵ . Hence

$$\nabla_{m(L)} = (-1)^{\#\{\text{clasps of } F\}} \cdot (-1)^{\text{rk } H_1 F} \cdot \nabla_L.$$

The equality $\chi(F) = \sum_{i=1}^n \chi(F_i) - \#\{\text{clasps of } F\}$ yields

$$\#\{\text{clasps of } F\} + \text{rk } H_1 F = \text{rk } H_1 F - \chi(F) + \sum_{i=1}^{\mu} \overbrace{\chi(F_i)}^{\equiv \mu_i} \equiv \mu + 1,$$

and the proposition is proved. \square

Let (L', σ') and (L'', σ'') be two colored links; let us suppose that two components L'_i of L' and L''_j of L'' have the same color $\sigma'(i) = \sigma''(j) = \alpha$. Then, there is a well-defined colored link given by the connected sum of L' and L'' along L'_i and L''_j ; we will denote it by $(L' \# L'', \sigma' \# \sigma'')$. The following multiplicativity formula was also stated by Conway. As far as I know, there is no published proof.

Proposition 5. $\nabla_{L' \# L''}^{\sigma' \# \sigma''} = \nabla_{L'}^{\sigma'} \cdot \nabla_{L''}^{\sigma''} \cdot (t_\alpha - t_\alpha^{-1})$.

Proof. Given C-complexes F' for (L', σ') and F'' for (L'', σ'') , a C-complex for the connected sum $(L' \# L'', \sigma' \# \sigma'')$ is given by $F = F' \# F''$. Clearly, $A_F^\epsilon = A_{F'}^\epsilon \oplus A_{F''}^\epsilon$ for all ϵ , giving

$$A_F = \left(\prod_{j \neq \alpha} (t''_j - (t''_j)^{-1}) \cdot A_{F'} \right) \oplus \left(\prod_{i \neq \alpha} (t'_i - (t'_i)^{-1}) \cdot A_{F''} \right).$$

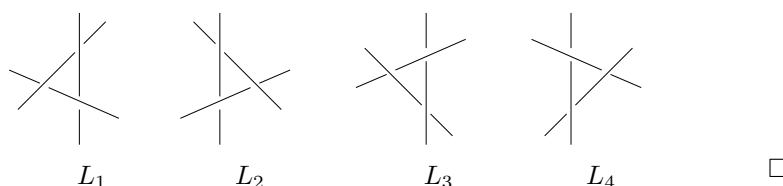
Since $\text{sgn}(F) = \text{sgn}(F') \cdot \text{sgn}(F'')$ and

$$\begin{aligned} \chi(F \setminus F'_i) &= \chi(F' \setminus F'_i) + \chi(F'') - 1 \quad \forall i \neq \alpha, \\ \chi(F \setminus F''_j) &= \chi(F') + \chi(F'' \setminus F''_j) - 1 \quad \forall j \neq \alpha, \\ \chi(F \setminus F_\alpha) &= \chi(F' \setminus F'_\alpha) + \chi(F'' \setminus F''_\alpha), \end{aligned}$$

we get the result. \square

For the sake of completeness, let us mention without proof two additional properties of Conway's potential function. The first one is another skein relation announced by Conway, that can be proved using our construction.

Proposition 6. $\nabla_{L_1}^\sigma + \nabla_{L_2}^\sigma = \nabla_{L_3}^\sigma + \nabla_{L_4}^\sigma$, where L_1, L_2, L_3 and L_4 are identical except within a ball where they are related as illustrated below.



The second one is the translation of the Torres formula [10, Theorem 3] from the Alexander polynomial to the Conway potential function. This formula can be recovered from our theorem, but the proof is a little tedious.

Proposition 7. $\nabla_L(1, t_2, \dots, t_\mu) = (t_2^{\ell_{12}} \dots t_\mu^{\ell_{1\mu}} - t_2^{-\ell_{12}} \dots t_\mu^{-\ell_{1\mu}}) \cdot \nabla_{L \setminus L_1}(t_2, \dots, t_\mu)$, where ℓ_{1i} denotes the linking number $\ell k(L_1, L_i)$. \square

Acknowledgements. The author wishes to express his thanks to Daryl Cooper and to Mathieu Baillif. Above all, it is a pleasure to thank Jerry Levine for his kindness and disponibility at Brandeis University.

References

- [1] J. W. Alexander, Topological invariants of knots and links, *Trans. Amer. Math. Soc.* **30** (1928), no. 2, 275–306.
- [2] J. H. Conway, An enumeration of knots and links, and some of their algebraic properties, in: *Computational Problems in Abstract Algebra (Proc. Conf., Oxford, 1967)*, 329–358, Pergamon, Oxford, 1970.
- [3] D. Cooper, Signatures of surfaces with applications to knot and link cobordism, Ph. D. thesis, University of Warwick, 1982.
- [4] D. Cooper, The universal abelian cover of a link, in: *Low-dimensional topology (Bangor, 1979)*, 51–66, London Math. Soc. Lecture Note Ser., 48, Cambridge Univ. Press, Cambridge–New York, 1982.
- [5] R. H. Fox, Free differential calculus. II. The isomorphism problem of groups, *Ann. of Math.* (2) **59** (1954), 196–210.
- [6] R. Hartley, The Conway potential function for links, *Comment. Math. Helv.* **58** (1983), no. 3, 365–378.
- [7] L. H. Kauffman, The Conway polynomial, *Topology* **20** (1981), no. 1, 101–108.
- [8] W. B. R. Lickorish, *An introduction to knot theory*, Graduate Texts in Mathematics, 175. Springer-Verlag, New York, 1997.

- [9] J. Murakami, On local relations to determine the multi-variable Alexander polynomial of colored links, in: *Knots 90 (Osaka, 1990)*, 455–464, de Gruyter, Berlin, 1992.
- [10] G. Torres, On the Alexander polynomial, *Ann. of Math. (2)* **57** (1953), 57–89.
- [11] V. G. Turaev, Reidemeister torsion in knot theory (Russian), *Uspekhi Mat. Nauk* **41** (1986), no. 1 (247), 97–147; translation in *Russian Math. Surveys* **41** (1986), no. 1, 119–182.

D. Cimasoni
Université de Genève
Section de Mathématiques
2–4, rue du Lièvre
CP 240
1211 Genève 24
Switzerland

(Received: July 17, 2002)



To access this journal online:
<http://www.birkhauser.ch>
