

Singularities of the network flow with symmetric initial data

Matteo Novaga and Luciano Sciaraffia

Abstract. We study the formation of singularities for the curvature flow of networks when the initial data is symmetric with respect to a pair of perpendicular axes and has two triple junctions. We show that, in this case, the set of singular times is finite.

1. Introduction

The *mean curvature flow* is one of the best studied geometric evolution equations, in particular, its one-dimensional version, often called the *curve shortening flow*. This last flow is completely understood thanks to the works of Gage and Hamilton, as well as Grayson [11, 13]: a closed, embedded curve in the plane becomes convex in finite time and then shrinks to a *round point*. A natural and interesting generalisation of this flow is the *network flow*, also known as *multiphase mean curvature flow* in higher dimensions, where instead of considering a single curve the underlying geometric object is a *regular network*, that is, a finite union of embedded curves that can meet only at their endpoints, and at each multiple junction only three curves meet forming equal angles of $2\pi/3$ (more precise definitions are provided in Section 2). This last condition, named after Herring, arises naturally because of the variational structure of the flow, since these triple junctions minimise length locally.

The network flow has been thoroughly studied, although a complete understanding as in the case of a single curve is far from being achieved. One of the first results in this line comes from Bronsard–Reitich [10], where they showed short time existence for the flow of *triods*, that is, networks consisting of three curves and one triple junction, with Neumann boundary conditions. Subsequently, the works of Mantegazza–Novaga–Tortorelli [23] and later Magni–Mantegazza–Novaga [19] studied the singularity formation under the flow, with Dirichlet boundary conditions, stating in which cases the flow exists for all times and reaches in the limit the Steiner tree spanned by the three endpoints.

More recently, in [12,22] a general proof of existence of a solution to the network flow with regular initial data was given. It was also shown that the flow can be extended to a maximal existence time at which, if finite, a singularity forms: either the L^2 -norm of the curvature blows up, or the length of one of the curves goes to zero. Moreover, as in the case of the curve shortening flow, a *geometric uniqueness* holds: every other solution starting at the same initial network is just a reparametrisation of the flow. Thus, to give a complete description of the flow, it becomes crucial to understand and classify the singularities that can arise.

In contrast to what happens in the case of a single curve, it could be possible during the network flow that the length of one or more curves goes to zero while the curvature of the network remains bounded. This kind of phenomenon is often called a *type-0 singularity*, and allows the flow to approach an irregular network with junctions of multiplicity greater than three. Because of this, it becomes a compelling question to understand if it is possible to start a regular flow when the initial network fails to satisfy the Herring condition. It turns out that, thanks to the results of [14,18], such an irregular network can serve as initial data for a regular flow, enabling its continuation beyond some singularities, albeit not in a unique way. Such flows are constructed by locally replacing an irregular junction by one of the self-similar, tree-like expanding solitons obtained in [24] according to the number of curves concurring at said junction. In this way, new edges might “emerge” flowing out of the junction, and the nonuniqueness of the continuation is directly tied to the nonuniqueness of the expanders. In any case, the number of possible geometric solutions is classified by the number of expanders at each irregular junction [18, Corollary 8.7]. Thanks to these findings, it becomes possible to continue the flow past a type-0 singularity. We remark that it could also be possible to restart the flow in other potential scenarios where the curvature does blow up, but these are not within the scope of this discussion. The interested reader might see the discussion present in [22, Section 10.4]. We also mention other approaches based on the evolution of partitions, or *clusters*, where the interfaces are boundaries of the evolving domains they enclose, called *grains*. These methods also allow starting the flow from irregular initial data, such as those based on *minimising movements* [7, 17] and the *Brakke flow* [9, 15, 16, 27] (see also [18, Section 8.5]).

Much of the analysis of singularities can be done conditional to the so-called *multiplicity-one conjecture*, which states that every limit of parabolic rescalings of the flow around a fixed point is a flow of embedded networks with multiplicity one. Indeed, Mantegazza–Novaga–Pluda [21] showed, conditionally to this statement, that if there are no loops in the initial network, or, in other words, the initial datum is a tree, then only type-0 singularities can occur. Hence, in the case of trees the flow could in principle be continued indefinitely.

It turns out that the multiplicity-one conjecture is true for networks with at most two triple junctions, as was shown in [20]. As a result, a complete description of the possible singularities was obtained in this case. In particular, if no loop disappears at a singular time, there is only one way to continue the flow, so that the network remains locally connected, which the authors call the *standard transition* (cf. [18, Corollary 8.8]). This situation arises when the two triple junctions coalesce into a single point, forming a quad-

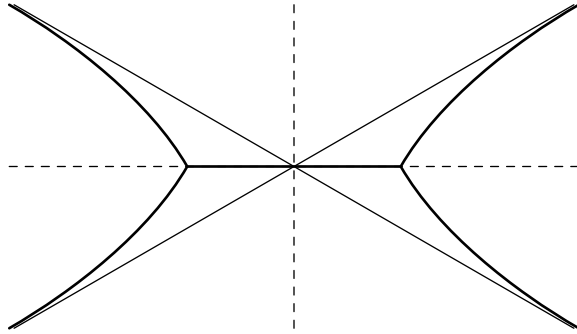


Figure 1. Expanding soliton asymptotic to the standard cross.

ruple junction with equal opposing angles of $\pi/3$ and $2\pi/3$. The flow past this singularity is locally described by the unique regular expander flowing out a *standard cross*. This soliton consists of a straight segment which “emerges” from the quadruple junction in the direction of the $\pi/3$ angle, while its other four edges approach exponentially the corresponding rays of the cross, as illustrated in Figure 1. However, the previous results only give a short time existence with no uniform control over the lifespan of the flow, which makes it difficult to rule out the possible accumulation of singular times. This is the only question remaining to be answered to give a complete description and a global time existence theorem in this case.

In this note we address this problem in the case of networks with two triple junctions that are symmetric to a pair of perpendicular axes. We refer to this class of networks simply as *symmetric*. With this condition, there are only four possible cases: the *tree*, the *lens*, the θ -*network*, and the *eyeglasses*, which are illustrated in Figure 2.

Before stating our main result, we mention that the case of the lens has already been studied and settled in a slightly more general case in [8, 26]. In complete analogy with [11, 13], it is proved that a (noncompact) lens-shaped network that is symmetric with respect to one axis eventually becomes convex and approaches a straight line in finite time, as the enclosed region disappears and the curvature blows up. The following theorem gives a complete description in the remaining cases:

Theorem 1.1. *Let Γ_0 be a symmetric regular network with two triple junctions. Then, there is a maximal time $T > 0$ and a unique network flow $\{\Gamma(t)\}_{0 \leq t < T}$ with initial data Γ_0 such that the set of its singular times is a finite subset of $(0, T]$; in particular, there is no accumulation of singularities. Moreover,*

- *if Γ_0 is a tree, then $T = \infty$ (global existence) and $\lim_{t \rightarrow \infty} \Gamma(t)$ is either a standard cross or a Steiner tree;*
- *otherwise $T < \infty$ and $\Gamma(t)$ becomes eyeglasses-shaped after the last type-0 singularity, and the curvature blows up as the enclosed regions vanish with $t \uparrow T$.*

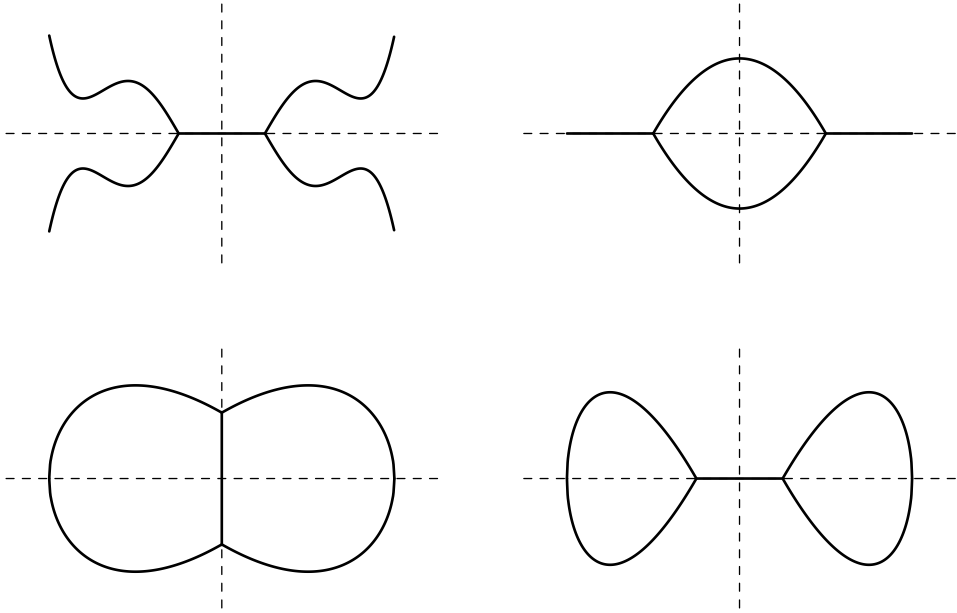


Figure 2. The four types of symmetric networks with two triple junctions: the *tree*, the *lens*, the *θ -network*, and the *eyeglasses*.

Remark 1.2. In the case of a tree, we cannot rule out a singularity at infinity, as the example in [25, Theorem 6.1] shows. There the authors construct a globally defined flow that stays regular for every time and converges to a cross in infinite time.

Let us briefly describe what the dynamics are in this situation. Since the initial datum is symmetric, it is easy to see that the evolution also stays symmetric until the first singularity forms. If we encounter a type-0 singularity, that is, the length of one of the curves goes to zero and the curvature of the network remains bounded, then again by symmetry the vanishing curve must be the straight edge passing through the origin. In this way, the two triple junctions collide, and we can then apply the results in [14, Theorem 1.1] and [18, Theorem 1.1] to restart the flow (cf. [20, Theorem 6.1]). Since the unique self-similar regular expanding soliton flowing out of a standard cross has the same symmetries as the cross [24, Proposition 2.2], we may conclude that the evolution remains symmetric as before. A tree transitions to a tree, and a θ -network transitions to eyeglasses and vice versa. This process can continue as long as the curvature remains bounded, and as stated, this can only happen a finite number of times, so any oscillatory behaviour is excluded.

The proof of Theorem 1.1 relies on a result by Angenent [5, Theorem 1.3], which we present as Proposition 2.7, adapted to this singular case. Its proof is grounded in the *Sturmian theorem*, as stated by Angenent [4, Theorem 2.1] (cf. [1, Theorems C and D]). In essence, this theorem asserts that if $u \in C^\infty(Q_T)$ is a solution to a linear parabolic

equation in $Q_T := [0, 1] \times [0, T]$, and if $u(x, t) \neq 0$ for all $0 \leq t \leq T$ and $x = 0, 1$, then at any time $t \in (0, T]$, the number of zeroes of $u(\cdot, t)$ will be finite. Furthermore, this number decreases as a function of t and strictly decreases whenever $u(\cdot, t)$ has a zero of high multiplicity. For additional applications, we refer to [3], and for a detailed proof, the reader may consult [1].

Although we are dealing with a very special case of the network flow, it is reasonable to believe that Theorem 1.1 holds true in general for tree-like networks, with appropriate modifications.

Conjecture 1.3. *The number of singular times during the evolution of a tree is finite. If no boundary curve disappears during the evolution, then the flow exists for all positive times and converges to a (possibly degenerate) minimal network.*

In addition, we observe that the same technique employed to prove Theorem 1.1 can be used to deduce an analogous theorem for the evolution of networks on the sphere \mathbf{S}^2 , where we have a similar notion of symmetry. In this case, we consider networks with two triple junctions that are symmetric with respect to a reflection across two perpendicular great circles, which are the geodesics of \mathbf{S}^2 . Since the outcome remains unchanged when considering a tree-like initial configuration, we focus on the case of the θ -network and the eyeglasses.

Theorem 1.4. *Let Γ_0 be a symmetric, closed, and regular network with two triple junctions on the sphere \mathbf{S}^2 . Then, there is a maximal time $T > 0$ and a unique network flow $\{\Gamma(t)\}_{0 \leq t < T}$ with initial data Γ_0 such that the set of its singular times is a finite subset of $(0, T)$; in particular, there is no accumulation of singularities. Moreover, either*

- $T = \infty$ and $\lim_{t \rightarrow \infty} \Gamma(t)$ is a minimal θ -network;
- or $T < \infty$ and the curvature blows up as one of the enclosed regions vanish with $t \uparrow T$.

Note that in this particular situation, if the flow is globally defined, the limit as $t \rightarrow \infty$ is always a regular network. This contrasts with the case of a tree, as explained in Remark 1.2.

The plan of the paper is the following: In Section 2 we introduce the notion of network and network flow, and we recall some preliminary results on existence and uniqueness of solutions. In Section 3 we prove our main result on the singularities of the flow of symmetric networks with two triple junctions. Finally, in Section 4 we explain how to modify the arguments from Section 3 to prove Theorem 1.4.

2. Notation and preliminary results

Before proceeding to the proof of Theorem 1.1, we shall first establish our notation, present the necessary definitions, and recapitulate the essential results.

Let $\gamma: [0, 1] \rightarrow \mathbf{R}^2$ be a regular C^2 curve, meaning that $\gamma'(x) \neq 0$ for all $x \in [0, 1]$. We denote its unit tangent by $\tau(x) := \gamma'(x)/|\gamma'(x)|$ and its unit normal by ν , such that $\{\tau, \nu\}$ is a positive basis of \mathbf{R}^2 . The curvature of γ with respect to ν is denoted by κ . Occasionally, we may use superscript indices to label curves, and when we do, we also label their tangents, normals, and curvatures accordingly.

Definition 2.1 (Network). A *network* Γ is a finite union of embedded, regular curves $\{\gamma^j\}_{j=1}^n$ of class C^2 , called *edges*, that meet only at their endpoints and nontangentially, and such that the union of their images $\bigcup_{j=1}^n \gamma^j([0, 1])$ is a connected set. A network Γ is said to be *regular* when its edges intersect solely at triple junctions, at which their interior tangents form equal angles of $2\pi/3$. The endpoints of curves that are not shared by other curves are referred to as *endpoints* of the network.

Note that the regularity condition at triple junctions can be stated as follows: if three curves γ^{j_k} ($k = 1, 2, 3$) intersect at, say, $x = 0$, then

$$\tau^{j_1}(0) + \tau^{j_2}(0) + \tau^{j_3}(0) = 0.$$

Definition 2.2 (Network flow). Let $\Gamma(t) = \{\gamma^j(\cdot, t)\}_{j=1}^n$ with $t \in (a, b)$ be a one-parameter family of regular networks, with fixed endpoints p^1, \dots, p^r , and time-dependent triple junctions $o^1(t), \dots, o^s(t)$. Then, $\{\Gamma(t)\}_{a < t < b}$ is said to be a solution to the *network flow* if at every time $t \in (a, b)$, with possible curve relabelling, the following system is satisfied:

$$\left\{ \begin{array}{ll} \langle \partial_t \gamma^j(x, t), \nu^j(x, t) \rangle = \kappa^j(x, t), & x \in [0, 1], \quad j = 1, \dots, n, \\ \gamma^k(1, t) = p^k, & k = 1, \dots, r, \\ \tau^{l_1} + \tau^{l_2} + \tau^{l_3} = 0 & \text{at the triple junction } o^l(t), \quad l = 1, \dots, s. \end{array} \right. \quad (1)$$

We now state a version of short time existence for the network flow that suits our needs.

Proposition 2.3 (cf. [12, Theorems 1.1–1.2]). *Let Γ_0 be a regular network. Then, there exists a smooth solution $\{\Gamma(t)\}_{0 \leq t < T}$, unique up to reparametrisations, to the network flow (1) starting at Γ_0 and fixing its endpoints. Moreover, the flow can be extended to a maximal time $T > 0$, at which at least one of the following scenarios unfolds:*

- $T = \infty$;
- the inferior limit as $t \uparrow T$ of the length of one of the edges of $\Gamma(t)$ is zero;
- the superior limit as $t \uparrow T$ of the L^2 -norm of the curvature of $\Gamma(t)$ is infinite.

Proposition 2.3 allows us to initiate the flow from any regular data and extend it to a maximal time, while ensuring the flow remains smooth. Nevertheless, in the specific case we address here, where the initial network possesses only two triple junctions, we can provide additional insights.

Proposition 2.4 (cf. [20, Theorem 1.1]). *Let Γ_0 be a regular network with exactly two triple junctions, and let $\{\Gamma(t)\}_{0 \leq t < T}$ be the maximal smooth flow starting at Γ_0 . Suppose also that T is finite and the length of no boundary edge goes to zero. Then, as $t \uparrow T$, one of the following occurs:*

- *the length of a curve joining the triple junctions goes to zero while the curvature remains bounded;*
- *the limit of the lengths of the curves composing a loop goes to zero and the L^2 -norm of the curvature goes to infinity.*

If the network Γ_0 is a tree, then only the first situation happens.

As explained in the introduction, when the first scenario in Proposition 2.4 occurs, the flow approaches an irregular network with a single quadruple junction, resulting in the development of a type-0 singularity. Nonetheless, a transition to a regular flow is made possible by the following proposition:

Proposition 2.5 (cf. [18, Theorem 1.1, Proposition 8.5]). *Let Γ_0 be an irregular network. Then, there exists a solution $\{\Gamma(t)\}_{0 \leq t < T}$ to the network flow given by (1) such that $\Gamma(t)$ converges in the Hausdorff distance to Γ_0 as $t \downarrow 0$. Furthermore, all the solutions, accounting for possible reparametrisations, can be classified by the self-similar, tree-like expanding solitons described in [24] at each irregular junction. In particular, if Γ_0 consists of a single quadruple junction with angles $\pi/3$ and $2\pi/3$, and no other junctions are present, then the flow admits a unique solution.*

While the convergence to the initial datum Γ_0 can be understood in a much stronger sense, as discussed in [18], for our purposes, local uniform convergence suffices. In any case, it is worth noting that convergence remains smooth away from the irregular junctions, provided that Γ_0 itself is smooth.

Proposition 2.5 can be regarded as a restarting theorem after the formation of an irregular network, as previously explained. Furthermore, since the flow remains regular for positive times, we can employ Proposition 2.3 to extend it until the next singularity, if there is one. This leads us to the following definition, which is the primary focus of our discussion here:

Definition 2.6 (Extended network flow). *An extended network flow with initial condition Γ_0 is a one-parameter family of networks $\{\Gamma(t)\}_{0 \leq t < T}$ that satisfies the following conditions:*

- *there exists a finite number of times $0 = t_0 < t_1 < \dots < t_m = T$ such that the restriction $\{\Gamma(t)\}_{t_k < t < t_{k+1}}$, $k = 0, \dots, m - 1$, is a regular network flow in the sense of Definition 2.2;*
- *at each t_k , $k = 1, \dots, m - 1$, a type-0 singularity forms, and we call these *singular times*;*
- *$\Gamma(t)$ converges to $\Gamma(t_k)$ in the Hausdorff distance as $t \downarrow t_k$.*

Thus, another way then to rephrase Theorem 1.1 is that every solution to the network flow in the sense of Definition 2.6 can be continued to a maximal extended flow such that either $T = \infty$, or else $T < \infty$ and the curvature increases without bound as $t \uparrow T$.

We now present the main tool used for the proof of Theorem 1.1.

Proposition 2.7 (cf. [5, Theorem 1.3]). *Let $\gamma^1, \gamma^2: [0, 1] \times [0, T) \rightarrow \mathbf{R}^2$ be two solutions to the curve shortening flow, and suppose that for each $(x, t) \in [0, 1] \times [0, T)$,*

$$\gamma^1(0, t), \gamma^1(1, t) \neq \gamma^2(x, t) \quad \text{and} \quad \gamma^2(0, t), \gamma^2(1, t) \neq \gamma^1(x, t).$$

Then, the number of intersections of $\gamma^1(\cdot, t)$ and $\gamma^2(\cdot, t)$,

$$i(t) := \#\{(x_1, x_2) \in [0, 1] \times [0, 1] : \gamma^1(x_1, t) = \gamma^2(x_2, t)\},$$

is finite for every $t \in (0, T)$. Moreover, $i(\cdot)$ is a nonincreasing function of t , and decreases exactly when γ^1 and γ^2 become tangent at some point.

We briefly remark that the presence of triple junctions is what makes it difficult to apply Proposition 2.7 to a general, nonsymmetric network.

3. Proof of Theorem 1.1

We are now ready for the proof of our main result. Let Γ_0 be a symmetric regular network with two triple junctions, and let $\{\Gamma(t)\}_{0 \leq t < T}$ be the evolution given by Proposition 2.3. By our symmetry assumptions, from the system in (1) it follows that at each time $t \in (0, T)$, the network $\Gamma(t)$ is also symmetric with the same axes of symmetry as Γ_0 . Therefore, modulo a rotation and translation, the flow is completely described by one single curve in the first quadrant of \mathbf{R}^2 , where the coordinate axes coincide with the symmetry axes of $\Gamma(t)$. Let $\gamma: [0, 1] \times [0, T) \rightarrow \mathbf{R}^2$ be the evolution of this defining curve, and call (x_1, x_2) the rectangular coordinates of \mathbf{R}^2 . After a reparametrisation, we may further suppose that $\gamma(0, t)$ is the triple junction, which lies in the x_1 -axis, and $\tau(0, t) = (\frac{1}{2}, \frac{\sqrt{3}}{2})$ is the unit tangent, which is constant. Thus, we have the following boundary conditions for γ , according to each case, if Γ_0 :

- is a tree, then $\gamma(1, t) = p$ is a fixed endpoint of the network;
- is a θ -network, then $\gamma(1, t)$ is a free point in the x_2 -axis such that $\tau(1, t) = (-1, 0)$;
- is eyeglasses, then $\gamma(1, t)$ is a free point in the x_1 -axis such that $\tau(1, t) = (0, -1)$.

As a consequence of Proposition 2.4, the flow develops a type-0 singularity at T if and only if $\lim_{t \uparrow T} \gamma(0, t) = (0, 0)$.

Proof of Theorem 1.1. To fix ideas, let us suppose that the initial network Γ_0 is a tree with fixed endpoints. Assume also that at a finite time T , the flow develops a type-0 singularity. We can then apply Proposition 2.5 and extend the flow a little further to a time

$\widehat{T} > T$. By symmetry, this can be viewed as extending the evolution of the defining curve to a map $\gamma: [0, 1] \times [0, \widehat{T}) \rightarrow \mathbf{R}^2$, where the triple junction $\gamma(0, t)$ is in the x_2 -axis for times $t \in (T, \widehat{T})$.

Now, consider a straight line ℓ through the origin, such that the endpoint $p \notin \ell$ and the angle between the x_1 -axis and ℓ is in the range $(\frac{\pi}{6}, \frac{\pi}{3})$. Note also that ℓ is a static solution to the curve shortening flow. Define the function

$$i(t) := \#\{x \in [0, 1] : \gamma(x, t) \in \ell\}, \quad t \in (0, \widehat{T}).$$

We show that i is finite and nonincreasing in time, and decreases strictly across $t = T$.

Indeed, as long as the vertices of the network do not collide, that is, as $\gamma(0, t)$ stays away from the origin, we can invoke Proposition 2.7 to see that $i(t)$ is not increasing in time. On the other hand, $\gamma(\cdot, t)$ converges smoothly to a curve $\gamma(\cdot, T)$ as $t \uparrow T$ such that $\gamma(0, T) = 0$, and $\tau(0, T) = (\frac{1}{2}, \frac{\sqrt{3}}{2})$. Therefore, there exist some small $\varepsilon, \delta > 0$ such that $\gamma(\cdot, t)$ crosses ℓ in the rectangle $[0, \varepsilon] \times [0, 2\varepsilon]$ at a single point, for every $t \in (T - \delta, T]$. Note that $\gamma(\cdot, T)$ intersects ℓ exactly at the origin, and besides this point it lies completely above ℓ within the specified small rectangle. We now show that, after we restart the flow, $\gamma(\cdot, t)$ remains at a positive distance above ℓ in $[0, \varepsilon] \times [0, 2\varepsilon]$ for a short time.

Because of the invariance under reparametrisations, we can locally represent the evolution of γ as a graph $u(x, t)$ over the x_1 -axis, for $(x, t) \in [0, \varepsilon] \times [T, T + \delta)$, with δ possibly smaller. The function $u: [0, \varepsilon] \times [T, T + \delta) \rightarrow \mathbf{R}$ then satisfies the partial differential equation

$$u_t = \frac{u_{xx}}{1 + (u_x)^2} \quad \text{in } [0, \varepsilon] \times (T, T + \delta)$$

with Cauchy–Neumann boundary conditions

$$u(x, T) = u_T(x), \quad u_x(0, t) = 1/\sqrt{3}, \quad (x, t) \in [0, \varepsilon] \times (T, T + \delta),$$

where $u_T: [0, \varepsilon] \rightarrow \mathbf{R}$ is a function parametrising $\gamma(\cdot, T)$. If we consider the function $w(x, t) := u(x, t) - mx$, with $m \in (\frac{1}{\sqrt{3}}, \sqrt{3})$ being the tangent of the angle ℓ forms with the x_1 -axis, then w solves

$$w_t = \frac{w_{xx}}{1 + (w_x + m)^2},$$

which is strictly parabolic. Thanks to the estimate on the shortest curve of the flow with singular initial data [14, Theorem 1.1], there is a positive constant c such that

$$w(0, t) \geq c\sqrt{t - T}.$$

Furthermore, Proposition 2.5 implies that as t approaches T from above, $u(\cdot, t)$ uniformly converges to u_T . Therefore, for sufficiently small δ , we have $w(\varepsilon, t) > 0$ for all $t \in [T, T + \delta)$. This, combined with the fact that $w(x, T) \geq 0$ for all $x \in [0, \varepsilon]$ and the application of the maximum principle, shows that w remains greater than zero in $[0, \varepsilon] \times [T, T + \delta)$, which means $\gamma(\cdot, t)$ remains above the line ℓ during this interval. Hence, in a neighbourhood of the origin, the number of intersections between $\gamma(\cdot, t)$ and ℓ

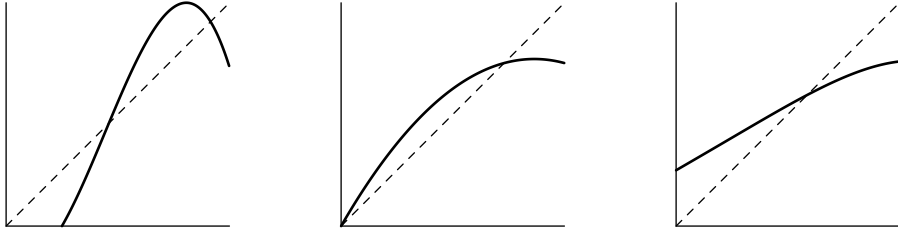


Figure 3. The number of intersections with the diagonal (dashed line) decreases by at least one through a standard transition.

decreases by precisely one as t crosses T . Outside this neighbourhood, we can once again employ Proposition 2.7 for t in the range $(T, T + \delta)$. This analysis demonstrates that $i(t)$ decreases by at least one over the interval $(0, T + \delta)$. For illustration purposes, see Figure 3.

Due to our symmetry assumptions and our choice of the line ℓ , after reflecting with respect to the diagonal $x_1 = x_2$ we find ourselves back in the initial setup. As a consequence, we can repeat the previous reasoning every time the two triple junctions of $\Gamma(t)$ coalesce into the origin, and as $i(t)$ cannot decrease indefinitely, it must become constant for sufficiently large $t > 0$, after which there are no more type-0 singularities. We can thus obtain an extended network flow as in Definition 2.6.

The steps described above carry almost identically to the other types of networks, with the only difference that we do not need to be concerned about avoiding any particular point p because there are no external endpoints.

We conclude the proof by referencing once again Proposition 2.4, from which it follows that the flow of a tree can be extended indefinitely. In contrast, for the θ -network and the eyeglasses cases, there must exist a time at which the two bounded regions collapse simultaneously, causing the L^2 -norm of the curvature to blow up. This can only happen as an eyeglasses-shaped network, as there is no self-similar shrinking θ -network [6].

Finally, in the case of a tree, there exists a sequence $t_n \rightarrow \infty$ such that $\Gamma(t_n)$ converges in $C^{1,\alpha} \cap W^{2,2}$ for every $\alpha \in (0, \frac{1}{2})$ to either a regular Steiner tree or a standard cross. If it converges to a Steiner tree, we can apply [25, Theorem 1.2] to establish the full smooth convergence of the flow as $t \rightarrow \infty$. Otherwise, regardless of the sequence of times, the limit is a standard cross. Thus, in this scenario as well, we observe full and smooth convergence. ■

4. Extension to the 2-sphere

We conclude this note by explaining how to adapt the proof Theorem 1.1 to the network flow on the sphere S^2 instead of \mathbf{R}^2 and show Theorem 1.4. Thanks to the theory developed

in [2, 5], this extension can be achieved almost effortlessly, albeit with a mild change in the flow's behaviour near the maximal time of existence.

First, it is worth noting that all the definitions presented in Section 2 straightforwardly apply to this case, and all the propositions in that section remain valid. Regarding the proof, the only change needed with respect to the argument in Section 3 is that instead of counting intersections with a straight line, we use a great circle passing through the centre of symmetry of the network, making an angle greater than $\pi/6$ but less than $\pi/3$ with respect to a chosen great circle of symmetry. The analogue of Proposition 2.7 asserts that this number decreases during the evolution. Across a type-0 singularity, we again represent the evolution locally as a graph over the chosen great circle using the exponential map. The resulting equation for the evolution remains strictly parabolic, and the application of the maximum principle yields the desired strict monotonicity. We therefore conclude that the flow can be extended until the curvature becomes unbounded as an enclosed region vanishes, or it can be extended indefinitely and converges to a minimal network. In the latter case, the minimal network must be a θ -network – minimal eyeglasses or 8-figures do not exist on the 2-sphere, which can be deduced from geodesic segments being arcs of great circles. In particular, infinity is excluded as a singular time.

References

- [1] S. Angenent, [The zero set of a solution of a parabolic equation](#). *J. Reine Angew. Math.* **390** (1988), 79–96 Zbl [0644.35050](#) MR [953678](#)
- [2] S. Angenent, [Parabolic equations for curves on surfaces. I. Curves with \$p\$ -integrable curvature](#). *Ann. of Math. (2)* **132** (1990), no. 3, 451–483 Zbl [0789.58070](#) MR [1078266](#)
- [3] S. Angenent, [Nodal properties of solutions of parabolic equations](#). *Rocky Mountain J. Math.* **21** (1991), no. 2, 585–592 Zbl [0727.35005](#) MR [1121527](#)
- [4] S. Angenent, [On the formation of singularities in the curve shortening flow](#). *J. Differential Geom.* **33** (1991), no. 3, 601–633 Zbl [0731.53002](#) MR [1100205](#)
- [5] S. Angenent, [Parabolic equations for curves on surfaces. II. Intersections, blow-up and generalized solutions](#). *Ann. of Math. (2)* **133** (1991), no. 1, 171–215 Zbl [0749.58054](#) MR [1087347](#)
- [6] P. Baldi, E. Haus, and C. Mantegazza, [Non-existence of \$\theta\$ -shaped self-similarly shrinking networks moving by curvature](#). *Comm. Partial Differential Equations* **43** (2018), no. 3, 403–427 Zbl [1391.53002](#) MR [3804202](#)
- [7] G. Bellettini and S. Y. Kholmatov, [Minimizing movements for mean curvature flow of partitions](#). *SIAM J. Math. Anal.* **50** (2018), no. 4, 4117–4148 Zbl [1396.53089](#) MR [3831241](#)
- [8] G. Bellettini and M. Novaga, [Curvature evolution of nonconvex lens-shaped domains](#). *J. Reine Angew. Math.* **656** (2011), 17–46 Zbl [1237.53063](#) MR [2818854](#)
- [9] K. A. Brakke, *The motion of a surface by its mean curvature*. Math. Notes 20, Princeton University Press, Princeton, NJ, 1978 Zbl [0386.53047](#) MR [485012](#)
- [10] L. Bronsard and F. Reitich, [On three-phase boundary motion and the singular limit of a vector-valued Ginzburg-Landau equation](#). *Arch. Rational Mech. Anal.* **124** (1993), no. 4, 355–379 Zbl [0785.76085](#) MR [1240580](#)

- [11] M. Gage and R. S. Hamilton, The heat equation shrinking convex plane curves. *J. Differential Geom.* **23** (1986), no. 1, 69–96 Zbl [0621.53001](#) MR [840401](#)
- [12] M. Göbwein, J. Menzel, and A. Pluda, [Existence and uniqueness of the motion by curvature of regular networks](#). *Interfaces Free Bound.* **25** (2023), no. 1, 109–154 Zbl [1514.35448](#) MR [4578340](#)
- [13] M. A. Grayson, The heat equation shrinks embedded plane curves to round points. *J. Differential Geom.* **26** (1987), no. 2, 285–314 Zbl [0667.53001](#) MR [906392](#)
- [14] T. Ilmanen, A. Neves, and F. Schulze, [On short time existence for the planar network flow](#). *J. Differential Geom.* **111** (2019), no. 1, 39–89 Zbl [1451.53121](#) MR [3909904](#)
- [15] L. Kim and Y. Tonegawa, [On the mean curvature flow of grain boundaries](#). *Ann. Inst. Fourier (Grenoble)* **67** (2017), no. 1, 43–142 Zbl [1381.53118](#) MR [3612327](#)
- [16] L. Kim and Y. Tonegawa, [Existence and regularity theorems of one-dimensional Brakke flows](#). *Interfaces Free Bound.* **22** (2020), no. 4, 505–550 Zbl [1464.53110](#) MR [4184584](#)
- [17] T. Laux and F. Otto, [Convergence of the thresholding scheme for multi-phase mean-curvature flow](#). *Calc. Var. Partial Differential Equations* **55** (2016), no. 5, article no. 129 Zbl [1388.35121](#) MR [3556529](#)
- [18] J. Lira, R. Mazzeo, A. Pluda, and M. Sáez, [Short-time existence for the network flow](#). *Comm. Pure Appl. Math.* **76** (2023), no. 12, 3968–4021 Zbl [1527.53084](#) MR [4655357](#)
- [19] A. Magni, C. Mantegazza, and M. Novaga, [Motion by curvature of planar networks, II](#). *Ann. Sc. Norm. Super. Pisa Cl. Sci. (5)* **15** (2016), 117–144 Zbl [1339.53063](#) MR [3495423](#)
- [20] C. Mantegazza, M. Novaga, and A. Pluda, [Motion by curvature of networks with two triple junctions](#). *Geom. Flows* **2** (2017), no. 1, 18–48 Zbl [1398.53076](#) MR [3565976](#)
- [21] C. Mantegazza, M. Novaga, and A. Pluda, [Type-0 singularities in the network flow—evolution of trees](#). *J. Reine Angew. Math.* **792** (2022), 189–221 Zbl [07612791](#) MR [4504095](#)
- [22] C. Mantegazza, M. Novaga, A. Pluda, and F. Schulze, Evolution of networks with multiple junctions. [v1] 2016, [v3] 2024, arXiv:[1611.08254](#). To appear in *Astérisque*
- [23] C. Mantegazza, M. Novaga, and V. M. Tortorelli, Motion by curvature of planar networks. *Ann. Sc. Norm. Super. Pisa Cl. Sci. (5)* **3** (2004), no. 2, 235–324 Zbl [1170.53313](#) MR [2075985](#)
- [24] R. Mazzeo and M. Saez, Self-similar expanding solutions for the planar network flow. In *Analytic aspects of problems in Riemannian geometry: elliptic PDEs, solitons and computer imaging*, pp. 159–173, Sémin. Congr. 22, Société Mathématique de France, Paris, 2011 Zbl [1280.53062](#) MR [3060453](#)
- [25] A. Pluda and M. Pozzetta, [Łojasiewicz–Simon inequalities for minimal networks: stability and convergence](#). *Math. Ann.* **389** (2024), no. 3, 2729–2782 Zbl [07867545](#) MR [4753074](#)
- [26] O. C. Schnürer, A. Azouani, M. Georgi, J. Hell, N. Jangle, A. Koeller, T. Marxen, S. Ritthaler, M. Sáez, F. Schulze, and B. Smith, [Evolution of convex lens-shaped networks under the curve shortening flow](#). *Trans. Amer. Math. Soc.* **363** (2011), no. 5, 2265–2294 Zbl [1220.53083](#) MR [2763716](#)
- [27] S. Stuard and Y. Tonegawa, [On the existence of canonical multi-phase Brakke flows](#). *Adv. Calc. Var.* **17** (2024), no. 1, 33–78 Zbl [1533.53077](#) MR [4685059](#)

Received 5 October 2023; revised 30 June 2024.

Matteo Novaga

Department of Mathematics, University of Pisa, Largo Bruno Pontecorvo 5, 56127 Pisa, Italy;
matteo.novaga@unipi.it

Luciano Sciaraffia

Abteilung für Angewandte Mathematik, Albert-Ludwigs-Universität Freiburg,
Hermann-Herder-Straße 10, 79104 Freiburg im Breisgau, Germany;
luciano.sciaraffia@mathematik.uni-freiburg.de