

# Linear progress in fibres

Vaibhav Gadre and Sebastian Hensel

**Abstract.** A fibred hyperbolic 3-manifold induces a map from the hyperbolic plane to hyperbolic 3-space, the respective universal covers of the fibre, and the manifold. The induced map is an embedding that is exponentially distorted in terms of the individual metrics. In this article, we begin a study of the distortion along typical rays in the fibre. We verify that a typical ray in the hyperbolic plane makes linear progress in the ambient metric in hyperbolic 3-space. We formulate the proof in terms of some soft aspects of the geometry and basic ergodic theory. This enables us to extend the result to analogous contexts that correspond to certain extensions of closed surface groups. These include surface group extensions that are Gromov hyperbolic, the universal curve over a Teichmüller disc, and the extension induced by the Birman exact sequence.

## 1. Introduction

In this article, we initiate the study of *distortion* for *typical elements* in groups focusing on examples whose motivation comes from geometry and topology in dimensions 2 and 3.

Suppose that  $H$  is a finitely generated subgroup of a finitely generated group  $G$ . For any choice of proper word metrics on  $H$  and  $G$ , the inclusion of  $H$  into  $G$  is a Lipschitz map. However, distances are contracted by arbitrary amounts by the inclusion in many examples. This can be quantified by the *distortion function*, the smallest function bounding the word norm of  $H$  in terms of the word norm of  $G$ . Many examples from low-dimensional topology exhibit exponential distortion; well-known examples are the fundamental groups of fibres in fibred hyperbolic 3-manifolds (see [3, Section 5]), Torelli (see [2, Theorem 1.1] and [4, Corollary 1.3]) and handlebody groups in surface mapping class groups (see [11]).

By definition, the distortion function measures the worst-case discrepancy between intrinsic and ambient metrics – for example, the existence of a single sequence of group elements in  $H$  whose norm grows linearly in  $G$  and exponentially in  $H$  already implies exponential distortion.

In this article, we adopt instead a more probabilistic viewpoint to ask about the growth of the ambient norm for *typical* elements of the subgroup.

Concretely, we consider subgroups isomorphic to the fundamental group of a closed surface and thus quasi-isometric to the hyperbolic plane. This allows us to use the (Lebesgue) measure on the circle at infinity to sample geodesics in the subgroup. Our main result proves that in various topologically interesting, exponentially distorted examples of surface group extensions such paths nevertheless make linear progress in the ambient space. We consider three geometrically motivated contexts, the first of which from geometric group theory. For the entirety of our article, we let  $\Sigma$  be a closed orientable surface of genus  $g \geq 2$ .

**Theorem 1.1.** *Let*

$$1 \rightarrow \pi_1(\Sigma) \rightarrow \Gamma \rightarrow Q \rightarrow 1$$

*be a hyperbolic group extension of a closed surface group. Then, there is a constant  $c > 0$  that depends only on the word metrics so that almost every geodesic ray in  $\pi_1(\Sigma)$  (sampled by the Lebesgue measure under an identification of  $\pi_1(\Sigma)$  with  $\mathbb{H}^2$ ) makes linear progress with speed at least  $c$  in the word metric on  $\Gamma$ .*

In particular, this includes the classical case where  $\Gamma$  is a fundamental group of a fibred hyperbolic 3-manifold. This special case is likely well known to experts (but to our knowledge not published). We also want to mention here that all known groups of this type have  $Q$  virtually free (but this does not yield any simplifications for the question considered here).

The second context arises in Teichmüller theory. A holomorphic quadratic differential on a Riemann surface is equivalent to a collection of charts from the surface to  $\mathbb{C}$  with transition functions that are half-translations, which is of the form  $z \rightarrow \pm z + c$ . The  $\mathrm{SL}(2, \mathbb{R})$ -action on  $\mathbb{C} = \mathbb{R}^2$  preserves the form of the transitions and hence descends to an action on the space of quadratic differentials. The compact part  $\mathrm{SO}(2, \mathbb{R})$  acts by rotations on the charts and hence preserves the underlying conformal structure on the surface. Thus, given a quadratic differential  $q$ , the  $\mathrm{SL}(2, \mathbb{R})$  orbit of  $q$  gives an isometric embedding of  $\mathbb{H}^2 = \mathrm{SL}(2, \mathbb{R}) / \mathrm{SO}(2, \mathbb{R})$  in the Teichmüller space of the surface. This is called the associated Teichmüller disc  $D_q$ . We may then consider a bundle  $E \rightarrow D_q$  whose fibres are the universal covers of the corresponding singular flat surfaces. The bundle  $E$  carries a natural metric, in which the fibres are again exponentially distorted. Although the total space is not hyperbolic, we obtain here the following theorem.

**Theorem 1.2.** *For any quadratic differential  $q$ , there is a number  $c > 0$  so that almost every geodesic in a fibre of  $E$  (sampled with Lebesgue measure under an identification with  $\mathbb{H}^2$ ) makes linear progress with speed at least  $c$  in the metric on  $E$ .*

Finally, we consider the Birman exact sequence

$$1 \rightarrow \pi_1(\Sigma, p) \rightarrow \mathrm{Mod}(\Sigma - p) \rightarrow \mathrm{Mod}(\Sigma) \rightarrow 1,$$

where  $\mathrm{Mod}(\Sigma)$  is the mapping class group of a closed orientable surface  $\Sigma$  of genus  $g \geq 2$  and  $\mathrm{Mod}(\Sigma - p)$  is the mapping class group of the surface  $\Sigma$  punctured/ marked at the point  $p$ .

Here, we obtain the following theorem.

**Theorem 1.3.** *For the Birman exact sequence*

$$1 \rightarrow \pi_1(\Sigma, p) \rightarrow \text{Mod}(\Sigma - p) \rightarrow \text{Mod}(\Sigma) \rightarrow 1,$$

*there is a number  $c > 0$  so that almost every geodesic in  $\pi_1(\Sigma, p)$  (sampled with Lebesgue measure under an identification with  $\mathbb{H}^2$ ) makes linear progress with speed at least  $c$  in a word metric on  $\text{Mod}(\Sigma - p)$ .*

The three results are not unexpected. The main merit of our article is that we distill the key features, thus giving a unified treatment in all three contexts that differ substantially in their details. Our results also leave the topic poised for a finer exploration of distortion in all contexts.

### Proof strategy

The basic method of proof is the same for all three results and has two main parts. In the geometric part, we construct suitable shadow-like sets in the total space from a ladder-type construction motivated by the construction in [15]. The basic idea is to move shadows in the base fibre to all other fibres using the monodromy and consider their union. We implement the idea with sufficient care to ensure that for a pair of nested shadows in the base fibre the shadow-like set from the bigger shadow is contained in the shadow-like set from the smaller shadow.

We then characterise “good” geodesic segments in the fibre, that is, segments for which the shadow-like set at the end of the segment is nested in the shadow-like set at the beginning by a distance in the ambient space that is linear in the length of the segment. This translates into a progress certificate for fibre geodesics in the ambient space.

Next, in the dynamical part, we exploit ergodicity of the geodesic flow on hyperbolic surfaces to guarantee that fellow-travelling with good segments occurs with a positive asymptotic frequency, thus proving the results.

The argument is cleanest in the classical case of a fibred hyperbolic 3-manifold. In this case, the monodromy is by a pseudo-Anosov map of the fibre surface. Such a map has a unique invariant Teichmüller axis and is a translation along the axis. By Teichmüller’s theorem, the surface can be equipped with a quadratic differential such that the map is represented by an affine map (given by a diagonal matrix in  $\text{SL}(2, \mathbb{R})$ ) in the singular flat metric on the surface defined by the quadratic differential. We can thus identify the fibre group by a quasi-isometry with universal cover of the surface with the lifted singular flat metric. The pseudo-Anosov monodromy acting as an affine map defines the singular flat metrics on the other fibres. Although the monodromy does not act as an isometry of the singular flat metric, it maps geodesics to geodesics. A long straight arc, for example, a long saddle connection that makes an angle close to  $\pi/4$  with both the horizontal and vertical foliations of  $q$ , has the property that all its images under the pseudo-Anosov monodromy will be also be long. Using (Gromov) hyperbolicity, the property of

containing/ fellow-travelling such a segment is stable for geodesic rays. In particular, it has positive Liouville measure when we pass to the hyperbolic metric. Hence, ergodicity of the hyperbolic geodesic flow implies that a typical hyperbolic ray satisfies the property with a positive asymptotic frequency. This ensures linear progress.

In a general hyperbolic surface group extension, the monodromies have weaker properties. In the bundle over a Teichmüller disc, the ambient space is not hyperbolic, but the monodromies are affine. In the Birman exact sequence, both properties fail, but weaker ones hold which still suffice to run our strategy. We work around these problems; the step that requires most care is finding good segments that they give robust distance lower bounds in the ambient space.

### Other sampling methods

In Theorems 1.1 and 1.3, one could sample in the kernel subgroup using random walks. Here, general results on random walks in hyperbolic groups ensure that corresponding results are true as well. In light of the famous Guivarc’h–Kaimanovich–Ledrappier singularity conjecture (see [5, Conjecture 1.21]) for stationary measures, the random walk sampling is in theory different from the earlier sampling using the hyperbolic Liouville measure.

In the setup of Theorem 1.2, there is no direct random walk analogue. In the lattice case, that is, when the affine symmetric group  $SL(X, q)$  (sometimes known as the Veech group) of a quadratic differential  $q$  is a lattice in  $SL(2, \mathbb{R})$ , one may replace the bundle  $E$  by the extension of  $SL(X, q)$ . Recent work of [6] shows that extension group acts on a suitable hyperbolic space; in fact, the result is hierarchically hyperbolic. This in turn again implies a linear progress result for sampling using stationary measures for random walks on  $SL(X, q)$ .

A third method of sampling for Theorems 1.1 and 1.3 is given by the Patterson–Sullivan measure for a word metric on the fibre group. Here again, general results for non-elementary actions of groups on Gromov hyperbolic spaces imply linear progress; see [9, Theorem 1.4]. For the Birman exact sequence, the hyperbolic space in question is the curve complex of the punctured surface. Since the curve complex distance is a coarse lower bound for the distance in  $\text{Mod}(\Sigma - p)$ , linear progress in  $\text{Mod}(\Sigma - p)$  follows.

The Patterson–Sullivan sampling is distinct from the random walk sampling because the measures are singular; see [10, Theorem 1.3]. As Patterson–Sullivan measures that arise from word metrics are also expected to be singular with respect to the Liouville measure for the hyperbolic geodesic flow, all three methods of sampling are in theory different.

### Future directions

Our results lay the preliminary ground work for more refined questions regarding distortion statistics for a random sampling in the contexts we consider. We will outline one such direction here.

Organising distortions by scale, we may ask for the explicit statistics of distortion along typical geodesics. An example of this nature covered in the literature is the case of a non-uniform lattice in  $\mathrm{SL}(2, \mathbb{R})$ , more generally a non-uniform lattice in  $\mathrm{Isom}(H^n)$ . Because of the presence of parabolic elements, a non-uniform lattice in  $\mathrm{SL}(2, \mathbb{R})$  is distorted in  $\mathbb{H}^2$  under the orbit map. The orbit is confined entirely to some thick part and never enters horoballs that project to cusp neighbourhoods in the quotient hyperbolic surface. The hyperbolic geodesic segment that joins pairs of orbit points that differ by a power of a parabolic is logarithmic in this power. This gives rise to the exponential distortion in this context. For example, when the lattice is  $\mathrm{SL}(2, \mathbb{Z})$ , the distortion statistics can be interpreted as the statistics of continued fraction coefficients. Similar distortion coming from a “parabolic” source arises in mapping class groups. To see some analysis of the distortion statistics in such examples, we refer the reader to [7, 8, 17].

In the contexts we consider here, the distortion does not have a parabolic source and results analogous to the examples in the above paragraph would be quite interesting.

## 2. Linear Progress in fibred hyperbolic 3-manifolds

Let  $M$  be a closed hyperbolic 3-manifold that fibres over the circle with fibre a closed orientable surface  $\Sigma$  with genus  $g \geq 2$ . Fixing a fibre  $\Sigma$ , the manifold  $M$  can be realised as a mapping torus  $\Sigma \times [0, 1] / \sim$ , where  $\Sigma \times \{0\}$  has been identified with  $\Sigma \times \{1\}$  by a pseudo-Anosov monodromy  $f$ , that is, by a mapping class  $f$  of  $\Sigma$  that is pseudo-Anosov.

Passing to the universal covers, the inclusion of  $\Sigma$  in  $M$  as the fibre  $\Sigma \times \{0\}$  induces an inclusion of the universal cover  $\mathbb{H}^2$  of the fibre  $\Sigma$  to the universal cover  $\mathbb{H}^3$  of  $M$ . In the hyperbolic metrics on  $\mathbb{H}^2$  and  $\mathbb{H}^3$ , this inclusion is distorted. Nevertheless, Cannon–Thurston [3] proved that there is limiting behaviour at infinity despite distortion. More precisely, they showed that the inclusion induces a continuous map from  $S^1 = \partial_\infty \mathbb{H}^2$  to  $S^2 = \partial_\infty \mathbb{H}^3$ , and moreover, this map is surjective. Thus, it is implicit that the image in  $\mathbb{H}^3$  of any hyperbolic geodesic ray  $\gamma$  in  $\mathbb{H}^2$  converges to a point in  $S^2 = \partial_\infty \mathbb{H}^3$ , even though the image need not be a quasi-geodesic because of the distortion.

### 2.1. Sampling geodesics

Our first notion of sampling involves the hyperbolic geodesic flow on  $T^1\Sigma$ . Let  $g_t$  be the hyperbolic geodesic flow on  $T^1\Sigma$ , and let  $\mu_{\mathrm{Lio}}$  be the  $g_t$ -invariant Liouville measure on  $T^1\Sigma$ . Let  $\pi : T^1\Sigma \rightarrow \Sigma$  be the canonical projection. We adopt the convention that when we mention a hyperbolic geodesic ray  $\gamma$ , we mean the projection

$$\pi(g_t v) : t \geq 0$$

for some  $v \in T^1\Sigma$ .

Let  $D_{\mathrm{hyp}}$  be the hyperbolic metric on  $\mathbb{H}^3$ . Sections 2 to 5 will be concerned with a detailed proof of the following theorem (which will also serve as a blueprint for the analogous result in other settings).

**Theorem 2.2.** *There exists a constant  $k > 0$  such that, for  $\mu_{\text{Lio}}$ -almost every  $v \in T^1\Sigma$ , the corresponding hyperbolic geodesic ray  $\gamma = \pi(g_t v)$  satisfies*

$$D_{\text{hyp}}(\gamma_0, \gamma_T) > kT$$

for all  $T$  sufficiently large depending on  $v$ .

Before beginning with the proof in earnest, we also want to discuss a different method of sampling random geodesics in the fibre surface.

For this second notion, we consider non-elementary random walks on  $\pi_1(\Sigma)$ . Let  $\mu$  be a probability distribution on  $\pi_1(\Sigma)$ . A sample path of length  $n$  for a  $\mu$ -random walk on  $\pi_1(\Sigma)$  is the random group element  $w_n$  given by  $w_n = g_1 g_2 \cdots g_n$ , where each  $g_j$  is sampled by  $\mu$ , independently of the preceding steps. A random walk is said to be *non-elementary* if the semi-group generated by the support of  $\mu$  contains a pair of hyperbolic elements with distinct stable and unstable fixed points on  $S^1 = \partial_\infty \mathbb{H}^2$ .

It is a classical fact (generalised by Furstenberg to many more settings) that a non-elementary random walk on  $\pi_1(\Sigma)$ , when projected to  $\mathbb{H}^2$  using the group action, converges to infinity. That is, for any base point  $x$  and for almost every infinite sample path  $\omega = (w_n)$ , the sequence  $w_n x$  in  $\mathbb{H}^2$  converges to a point of  $S^1$ . For a detailed account of the theory, we refer the reader to [12].

The almost sure convergence to  $S^1$  defines a stationary measure  $\nu$  on it. We may then use  $\nu$  to sample geodesic rays as follows. Using geodesic convergence to infinity, we can pull  $\nu$  back to a measure on the unit tangent circle  $T_x^1 \mathbb{H}^2$ . We use this pullback to sample hyperbolic geodesic rays starting from  $x$  and consider the question of whether a typical ray makes linear progress.

A famous conjecture of Guivarc’h–Kaimanovich–Ledrappier states that for any finitely supported non-elementary random walk on  $\pi_1(\Sigma)$  the associated stationary measure  $\nu$  is singular with respect to the Lebesgue measure on  $S^1$  (see [5, Conjecture 1.21]). As such, linear progress of  $\nu$ -typical ray cannot be deduced from Theorem 2.2.

For technical reasons, it is more convenient to simultaneously consider forward and backward random walks. The backward random walk is simply the random walk with respect to the reflected measure

$$\hat{\mu}(g) = \mu(g^{-1}).$$

The space of bi-infinite sample paths, denoted by  $\Omega$ , has a natural invertible map on it given by the right shift  $\sigma$ . The product measure  $\nu \times \hat{\nu}$ , where  $\hat{\nu}$  is the stationary measure for the reflected random walk, is  $\sigma$ -ergodic.

Using the orbit map, we may equip  $\pi_1(\Sigma)$  with the hyperbolic metric induced from  $\mathbb{H}^2$ ; that is, we may consider the functions  $f_n(\omega) = d_{\text{hyp}}(x, w_n x)$  along sample paths in  $\Omega$ . Similarly, by the orbit map to  $\mathbb{H}^3$ , we may also equip  $\pi_1(\Sigma)$  with the function induced by the hyperbolic metric from  $\mathbb{H}^3$ ; that is, we may consider the functions  $F_n(\omega) = D_{\text{hyp}}(x, w_n x)$  along sample paths in  $\Omega$ .

A distribution  $\mu$  on  $\pi_1(\Sigma)$  is said to have finite first moment for a word metric if

$$\sum_{g \in \pi_1(\Sigma)} d_{\pi_1(\Sigma)}(1, g) d\mu(g) < \infty.$$

The action of  $\pi_1(\Sigma)$  on  $\mathbb{H}^2$  is co-compact. Hence, a word metric on  $\pi_1(\Sigma)$  is quasi-isometric to the hyperbolic metric  $d_{\text{hyp}}$  induced on it by the orbit map. Thus, finite first moment for a word metric is equivalent to finite first moment for  $d_{\text{hyp}}$ , and so, we no longer need to specify the metric. It follows that if  $\mu$  has finite first moment, then the functions  $f_n$  are  $\ell^1$  with respect to  $\nu \times \hat{\nu}$ . Since  $f_n \geq F_n$ , we deduce that the functions  $F_n$  are  $\ell^1$ .

By the triangle inequality, the function sequences  $f_n$  and  $F_n$  are sub-additive along sample paths. Hence, by Kingman's sub-additive ergodic theorem, there exists, constants  $a_1 \geq 0$  and  $a_2 \geq 0$  such that for almost every bi-infinite sample path  $\omega$

$$\lim_{n \rightarrow \infty} \frac{f_n(\omega)}{n} = a_1 \quad \text{and} \quad \lim_{n \rightarrow \infty} \frac{F_n(\omega)}{n} = a_2.$$

The constants are called drifts.

To argue the fact that the drifts are positive, we recall [12, Theorem 1.2].

**Theorem 2.3** (Maher–Tiozzo). *Suppose that a countable group  $G$  acts by isometries on a separable Gromov hyperbolic space  $X$ , and let  $x$  be any point of  $X$ . Let  $\mu$  be a non-elementary probability distribution on  $G$ ; that is, the semi-group generated by the support of  $\mu$  contains a pair of hyperbolic isometries of  $X$  with distinct fixed points on the Gromov boundary  $\partial X$ . Further, suppose that  $\mu$  has finite first moment in  $X$ ; that is,*

$$\sum_{g \in G} d_X(x, gx) d\mu(g) < \infty.$$

*Then, there is a constant  $L > 0$  such that for any base point  $x \in X$  and for almost every sample path  $\omega = (w_n)_{n \in \mathbb{N}}$*

$$\lim_{n \rightarrow \infty} \frac{d_X(x, w_n x)}{n} = L.$$

In our case, the actions of  $\pi_1(\Sigma)$  on  $\mathbb{H}^2$  and  $\mathbb{H}^3$  are both non-elementary. Since  $D_{\text{hyp}} \leq d_{\text{hyp}}$  on  $\pi_1(\Sigma)$ , finite first moment for  $d_{\text{hyp}}$  implies finite first moment for  $D_{\text{hyp}}$ . By Theorem 2.3, the drifts  $a_1$  and  $a_2$  are both positive.

Using the measure  $\nu \times \hat{\nu}$ , we can sample ordered pairs of points at infinity. With probability one, these points are distinct and hence determine a bi-infinite geodesic in  $\mathbb{H}^2$ . We parameterise the geodesic by  $\gamma : (-\infty, \infty) \rightarrow \mathbb{H}^2$  such that  $\gamma_0$  is the point of  $\gamma$  closest to the base point and  $\gamma_t$  converges to the point at infinity sampled by  $\nu$ . As a consequence of the positivity of the drifts, the theorem below directly follows.

**Theorem 2.4.** *Let  $\mu$  be a non-elementary probability distribution on  $\pi_1(\Sigma)$  with finite first moment, and let  $\hat{\mu}$  be the reflected distribution. Let  $\nu$  and  $\hat{\nu}$  be the stationary measures*

on  $S^1$  for  $\mu$ - and  $\hat{\mu}$ -random walks. Then, there exists a constant  $K \geq 1$  such that, for  $\nu \times \hat{\nu}$ -almost every  $\gamma$ , there is a  $T_\gamma$  such that, for all  $T > T_\gamma$ ,

$$D_{\text{hyp}}(\gamma_0, \gamma_T) \geq \frac{T}{K}.$$

Since the treatment in Maher–Tiozzo is quite general, we will provide a direct sketch for the positivity of the drifts later in the paper (see Section 5).

The hyperbolic ray from the base point  $x$  that converges to the same point at infinity as the geodesic  $\gamma$  is strongly asymptotic to  $\gamma$ . Thus, we deduce the following theorem.

**Theorem 2.5.** *Let  $\mu$  be a non-elementary probability distribution on  $\pi_1(\Sigma)$  with finite first moment, and let  $\nu$  be the stationary measure on  $S^1$  for the  $\mu$ -random walk. Then, there exists  $K \geq 1$  such that, for  $\nu$ -almost every  $\lambda \in S^1$ , there exists  $T_\lambda$  such that, for any  $T > T_\lambda$  the point  $\gamma_T$  along the hyperbolic geodesic ray from  $x$  that converges to  $\lambda$ , we have*

$$D_{\text{hyp}}(\gamma_0, \gamma_T) \geq \frac{T}{K}.$$

In other words, a typical ray in the fibre  $\mathbb{H}^2$  makes linear progress in  $\mathbb{H}^3$ .

### 3. Flat and solv geometry

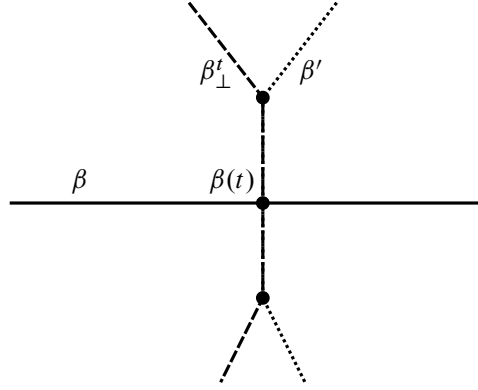
In order to prove Theorem 2.2 and Theorem 2.4, we analyse the geometry by starting with the flat and singular solv geometry. A pseudo-Anosov map on  $\Sigma$  acting on Teichmüller space has an invariant axis that it translates along. We may then consider a holomorphic quadratic differential  $q$  along the axis and use contour integration of a square root of it to equip  $\Sigma$  with a singular flat metric. The singular flat metric lifted to the universal cover  $\mathbb{H}^2$  of  $\Sigma$  will be denoted by  $d_{\text{flat}}$ . The singular flat metrics on all other fibres can be derived by the action of the corresponding affine maps along the Teichmüller axis. Put together, these metrics equip the universal cover  $\mathbb{H}^3$  of  $M$  with a singular solv metric which we denote by  $d_{\text{solv}}$ .

#### 3.1. Optimal shadows

We will define below the *optimal shadow* associated to a flat geodesic based at a point on it. The orientation on  $\mathbb{H}^2$  induces a cyclic order on the unit tangent circle at any point in  $\mathbb{H}^2$ . We will make use of this cyclic order in the description.

Let  $\beta : [0, T] \rightarrow \mathbb{H}^2$  be a parameterised flat geodesic, and let  $0 < t \leq T$ . As a preliminary, we define the *lower* and *upper* unit tangent vectors to  $\beta$  at  $\beta_t$ . Let  $\varepsilon > 0$  be small enough so that the segment  $[\beta_{t-\varepsilon}, \beta_{t+\varepsilon}]$  contains no singularities except possibly at  $\beta_t$ . We then define the lower unit tangent vector  $v^-(\beta_t)$  to be the unit tangent vector to  $[\beta_{t-\varepsilon}, \beta_t]$  at the point  $\beta_t$ . Similarly, we define the upper unit tangent vector  $v^+(\beta_t)$  to be the unit tangent vector to  $[\beta_t, \beta_{t+\varepsilon}]$  at the point  $\beta_t$ . Note that if  $\beta_t$  is a regular point, then  $v^-(\beta_t) = v^+(\beta_t)$ .





**Figure 3.2.** Lower perpendiculars. The lower perpendicular  $\beta_\perp^t$  at a point  $\beta(t)$  of a geodesic has the property that any other perpendicular  $\beta'$  lies “behind  $\beta_\perp^t$ ” from the perspective of  $\beta$ .

We will first show the existence of a *lower perpendicular*; compare Figure 3.2. Let  $\beta : [0, T] \rightarrow \mathbb{H}^2$  be a parameterised flat geodesic, and let  $0 < t \leq T$ . We say that a flat geodesic segment  $\alpha : (-s, s) \rightarrow \mathbb{H}^2$  is the *lower perpendicular* to  $\beta$  at  $\beta_t$  if

- $\alpha_0 = \beta_t$ ;
- the unit tangent vectors  $v^\pm(\alpha_0)$  make an angle of  $\pi/2$  with the lower tangent  $v^-(\beta_t)$ .

Let  $\beta'$  be a bi-infinite perpendicular to  $\beta$  at  $\beta_t$ . We denote the component of  $\mathbb{H}^2 - \beta'$  that contains  $\beta_0$  by  $C^-(\beta')$ . The content of the following lemma is illustrated in Figure 3.2.

**Lemma 3.3.** *Let  $\beta : [0, T] \rightarrow \mathbb{H}^2$  be a parameterised flat geodesic, and let  $0 < t \leq T$ . There exists a bi-infinite flat geodesic  $\beta_\perp^t$  such that*

- $\beta_\perp^t$  is the lower perpendicular to  $\beta$  at  $\beta_t$ ;
- for any bi-infinite geodesic  $\beta'$  perpendicular to  $\beta$  at  $\beta_t$

$$C^-(\beta_\perp^t) \subseteq C^-(\beta').$$

*Proof.* Breaking symmetry, suppose that  $\beta_t$  is a regular point. Then,  $\beta$  has exactly two perpendicular directions  $v_L, v_R$  at  $\beta_t$ . Using the cyclic order on the unit tangent circle at  $\beta_t$ , we arrange matters so that  $v_L, v^-(\beta_t), v_R$  in that order are counter-clockwise.

If the flat ray with initial direction  $v_L$  is infinite, then we set  $\beta_\perp^t$  to be this ray. So, suppose that the ray with initial vector  $v_L$  runs in to a singularity  $p$  in finite time. Let  $v^-$  be the lower tangent vector to the ray at the point  $p$ . In the induced cyclic order on the unit tangent circle at  $p$ , we may move clockwise from  $-v^-$  till we get a vector  $v^+$  that is at an angle  $\pi$  from  $-v^-$ . We then extend the initial ray by the flat ray with initial vector  $v^+$ . Continuing iteratively in this manner, we obtain an infinite flat ray which we set to be  $\beta_\perp^t$ .

We may then carry out an analogous construction with  $v_R$  to obtain an infinite flat ray  $\beta_R^\perp$  with initial vector  $v_R$ . In the analogous construction, should we encounter a singularity, we move counter-clockwise from  $-v^-$  by an angle of  $\pi$  to continue.

We then set  $\beta_\perp^t$  to be the union  $\beta_\perp^L \cup \beta_\perp^R$ . As the angle between  $\beta_\perp^L$  and  $\beta_\perp^R$  at the point  $\beta_t$  is exactly  $\pi$ , the union is a bi-infinite flat geodesic.

Suppose instead that  $\beta_t$  is a singularity. Using the induced cyclic order on the unit tangent circle at  $\beta_t$ , we move clockwise from  $-v^-(\beta_t)$  till we are at the vector  $v_L$  that is at angle  $\pi/2$  from  $-v^-(\beta_t)$ . Similarly, we move counter-clockwise from  $-v^-(\beta_t)$  till we are at the vector  $v_R$  that is at angle  $\pi/2$  from  $-v^-(\beta_t)$ . We now proceed to construct rays  $\beta_\perp^L$  (and  $\beta_\perp^R$ ) with initial vectors  $v_L$  (respectively,  $v_R$ ) exactly as above. We then set  $\beta_\perp^t$  to be again the union  $\beta_\perp^L \cup \beta_\perp^R$ . The angle between  $\beta_\perp^L$  and  $\beta_\perp^R$  is  $\pi$ , and hence,  $\beta_\perp^t$  is a bi-infinite geodesic.

Finally, suppose that  $\beta'$  is a bi-infinite geodesic perpendicular to  $\beta$  at  $\beta_t$ . If  $\beta'$  is distinct from  $\beta$ , then it diverges from  $\beta_\perp^t$  at some singularity. Breaking symmetry, suppose that there is a singularity  $p$  along  $\beta_\perp^L$  at which  $\beta'$  diverges from  $\beta_\perp^L$ . Then, the angle that  $\beta'$  makes at  $p$  exceeds  $\pi$ .

Let  $v^+(\beta') \neq v^+(\beta_\perp^L)$  be the tangent vectors at  $p$  to  $\beta'$  and  $\beta_\perp^L$ . Suppose that the rays with these initial vectors intersect. Then, the rays give two geodesic segments that bound a bigon. As the metric is flat with the negative curvature concentrated at singularities, the presence of this bigon contradicts Gauss–Bonnet. Hence, the rays do not intersect. Let  $s_L$  then be the region bound by this pair of rays and not containing  $\beta_0$ .

A similar argument applies if there is divergence between  $\beta'$  and  $\beta_\perp^R$  and yields a region  $s_R$  that does not contain  $\beta_0$ .

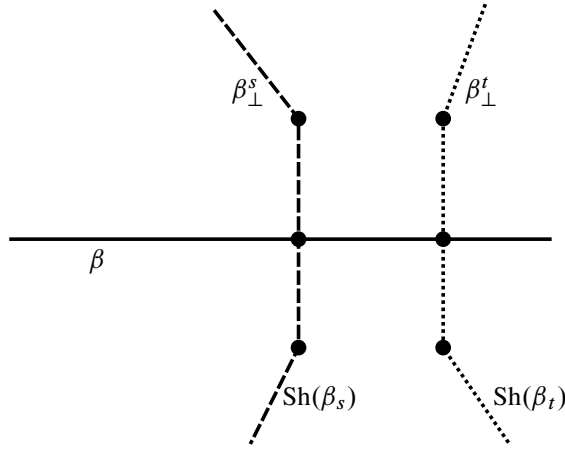
We deduce that  $C^-(\beta') = C^-(\beta_\perp^t) \cup s_L \cup s_R$ , thus finishing the proof.  $\blacksquare$

We also present a slightly less direct construction for  $\beta_\perp^t$ . The flat metric on  $\Sigma$  has finitely many singularities, and so, their lifts to  $\mathbb{H}^2$  yield a countable discrete set in  $\mathbb{H}^2$ . Let  $t$  in  $(0, T]$  be a time such that there exist,  $\varepsilon > 0$  depending on  $t$  such that the segment  $[\beta_{t-\varepsilon}, \beta_t]$  contains no singularity. We may then consider the foliation  $\lambda_\perp$  that is perpendicular to the segment  $[\beta_{t-\varepsilon}, \beta_t]$ . Among such times, we say  $t$  is *simple* if the leaf of  $\lambda_\perp$  containing  $\beta_t$  is bi-infinite and does not contain any singularities. By the observation regarding lifts of singularities, the set of simple times is dense (in fact, full measure) in  $[0, T]$ . Let  $s < t$  be simple times. A Gauss–Bonnet argument similar to the one in the proof above shows that

$$C^-(\beta_\perp^s) \subset C^-(\beta_\perp^t).$$

Suppose now that  $t > 0$  is a time that is not simple. We then consider a sequence of simple times  $t_n < t$  such that  $t_n$  converges to  $t$  and define  $\beta_\perp^t$  as the limit of the bi-infinite perpendiculars at  $\beta_{t_n}$ . We leave it as a simple exercise to check that this reproduces our definition in the above lemma.

The bi-infinite flat geodesic  $\beta_\perp^t$  divides  $\mathbb{H}^2$  into two components. We call the component of  $\mathbb{H}^2 - \beta_\perp^t$  that does not contain  $\beta_{t-\varepsilon}$  the *optimal shadow* of  $\beta$  at the point  $\beta_t$ . We denote the optimal shadow by  $\text{Sh}(\beta_t)$ .



**Figure 3.5.** Nested shadows.

A number of easy consequences follow from Gauss–Bonnet.

**Lemma 3.4.** *Let  $\beta : [0, T] \rightarrow \mathbb{H}^2$  be a parameterised flat geodesic, and let  $0 < t \leq T$ . The optimal shadow  $\text{Sh}(\beta_t)$  is convex in the flat metric on  $\mathbb{H}^2$ .*

*Proof.* Let  $x, x'$  be distinct points in  $\text{Sh}(\beta_t)$ , and suppose that the flat geodesic segment  $[x, x']$  intersects  $\beta_t^\perp$ . Then, the number of intersection points is at least two.

We may parameterise  $[x, x']$  and consider consecutive points of intersection. Between these points,  $[x, x']$  and  $\beta_t^\perp$  bound a nontrivial bigon. The presence of such a bigon contradicts the Gauss–Bonnet theorem. ■

As a consequence of Lemma 3.4, we immediately deduce the following lemma, illustrated in Figure 3.5.

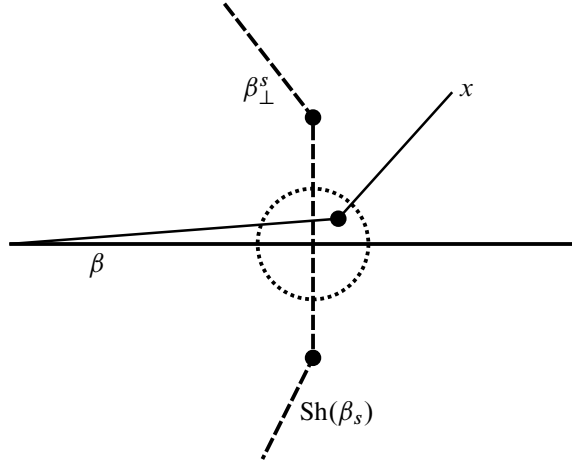
**Lemma 3.6.** *Let  $\beta : [0, T] \rightarrow \mathbb{H}^2$  be a parameterised flat geodesic, and let  $0 < s < t \leq T$ . Then,  $\text{Sh}(\beta_t)$  is nested strictly inside  $\text{Sh}(\beta_s)$ ; that is,  $\text{Sh}(\beta_t) \subset \text{Sh}(\beta_s)$  and  $\beta_t^\perp$  is contained in the interior of  $\text{Sh}(\beta_s)$ .*

*Proof.* Suppose that  $\beta_s^\perp$  and  $\beta_t^\perp$  intersect. Breaking symmetry, we may assume that there is an intersection point to the left of  $\beta$ . Let  $p$  be the first point of intersection to the left.

Let  $[\beta_s, p]$  (respectively,  $[\beta_t, p]$ ) be the finite segment of  $\beta_s^\perp$  (respectively,  $\beta_t^\perp$ ) with endpoints  $\beta_s$  (respectively,  $\beta_t$ ) and  $p$ .

Since  $\beta_s^\perp$  and  $\beta_t^\perp$  are both perpendicular to  $\beta$ , the sum of the angles of the triangle with sides  $[\beta_s, p]$ ,  $[\beta_t, p]$ , and  $[\beta_s, \beta_t]$  exceeds  $\pi$ . Since the metric is flat with negative curvature at the singularities, the presence of such a triangle violates the Gauss–Bonnet theorem.

Hence, we may conclude that  $\beta_s^\perp$  and  $\beta_t^\perp$  do not intersect, and the lemma follows. ■



**Figure 3.8.** Geodesics from  $\beta(0)$  to a point  $x$  in the shadow  $\text{Sh}(\beta_t)$  pass close by  $\beta(t)$ . Illustrated here is the case where  $\beta(t)$  is regular – in the singular case, the geodesic to  $x$  will usually pass exactly through  $\beta(t)$ .

In the next two lemmas, we justify the sense in which  $\text{Sh}(\beta_t)$  is actually a shadow.

**Lemma 3.7.** *For any parameterised geodesic*

$$\beta : [0, T] \rightarrow \mathbb{H}^2$$

and any  $0 < t \leq T$ , the point on  $\beta_\perp^t$  that is closest to  $\beta_s$  for any  $s \in [0, T]$  is  $\beta_t$ .

*Proof.* Suppose that a point  $x \in \beta_\perp^t$  distinct from  $\beta_t$  is closest to  $\beta_s$ . Consider the triangle with sides  $[\beta_s, \beta_t]$ ,  $[\beta_t, x]$ , and  $[x, \beta_s]$ , where  $[\beta_t, x]$  is a sub-segment of  $\beta_\perp^t$ . Since  $x$  is closest to  $\beta_s$ , the angle inside the triangle at  $x$  is  $\pi/2$ , as otherwise we could shorten the path from  $\beta_s$  to  $x$ . Hence, the triangle with our chosen sides has two of its angles  $\pi/2$ , which violates the Gauss–Bonnet theorem. ■

The following lemma is illustrated in Figure 3.8.

**Lemma 3.9.** *There exists  $r_0 > 0$  such that, for any  $t$  satisfying  $0 < r_0 < t$ , any parameterised geodesic  $\beta : [0, t] \rightarrow \mathbb{H}^2$  and any  $x \in \text{Sh}(\beta_t)$ , the flat geodesic segment  $[\beta_0, x]$  intersects the ball  $B(\beta_t, r_0)$ .*

*Proof.* By Lemma 3.4, shadows  $\text{Sh}(\beta_t)$  are convex, and by Lemma 3.7, the segment  $[\beta_0, \beta_t]$  gives the closest-point projection. The existence of  $r_0 > 0$  then follows from the hyperbolicity of the singular flat metric.

Alternatively, given  $x \in \text{Sh}(\beta_t)$ , we can give a more detailed description of the flat geodesic  $[x, \beta_0]$ . Note that it suffices to assume that  $x \in \beta_\perp^t$ .

We will recall some facts from flat geometry to give this description. For any point  $y$  on the fibre  $S$ , consider the set  $\text{Sad}(y)$  of flat geodesic arcs that

- join  $y$  to a singularity;
- have no singularity in their interior.

It is a standard fact in the theory of half-translation surfaces that the slopes of such arcs equidistribute in the set of directions. See [13, 14]. It follows that we can find  $r > 0$  such that all gaps in the slopes of all arcs in  $\text{Sad}(y)$  with length at most  $r$  are less than  $\pi/2$ .

Now, we consider  $\text{Sh}(\beta_t)$ , and breaking symmetry, consider  $\beta_\perp^L$ . Suppose that no flat geodesic segment  $[x, \beta_0]$ , where  $x \in \beta_\perp^L$ , passes through a singularity in its interior. This then means that the sector of angle  $\pi/2$  based at  $\beta_t$ , with sides  $[\beta_t, \beta_0]$  and  $\beta_\perp^L$ , contains no arc in  $\text{Sad}(\beta_t)$  with length at most  $r$ , a contradiction.

Moving along  $\beta_\perp^L$  away from  $\beta_t$ , let  $x$  be the first point for which  $[x, \beta_0]$  passes through a singularity  $p$ . It follows that, for later points  $x'$  along  $\beta_\perp^L$ , the geodesic segments  $[x', \beta_0]$  must pass through  $p$ .

The same holds for points in  $\beta_\perp^R$  and concludes our proof. ■

We record the following consequence.

**Lemma 3.10.** *Let  $r \geq r_0$ , where  $r_0$  is the constant in Lemma 3.9. Then, there exists  $\ell_0 > 0$  that depends on  $r$  such that for any  $\ell \geq \ell_0$  and any flat geodesic segment  $[\beta_0, \beta_{3\ell}]$  of flat length  $3\ell$  and any flat geodesic segment  $\beta'$  that fellow-travels  $\beta$  so that after parameterising  $\beta' : (-\varepsilon, t] \rightarrow \mathbb{H}^2$  to arrange  $\beta'_0 \in B(\beta_0, r)$  and  $\beta'_t \in B(\beta_{3\ell}, r)$  for some  $t$  satisfying  $3\ell - 2r < t < 3\ell + 2r$  we have that*

$$\mathbb{H}^2 - \text{Sh}(\beta'_0) \subseteq \mathbb{H}^2 - \text{Sh}(\beta_\ell)$$

and

$$\text{Sh}(\beta'_t) \subseteq \text{Sh}(\beta_{2\ell}).$$

*Proof.* We give a proof of the first inclusion; the second inclusion follows using similar arguments.

Given  $r$ , there exists  $r' \geq r$  that depends only on  $r$  such that  $r'$  is the fellow-travelling constant for the segments  $[\beta'_0, \beta'_t]$  and  $[\beta_0, \beta_{3\ell}]$ . If  $\ell_0 > 2r'$ , then  $\beta_\perp^{r'}$  does not intersect the ball  $B(\beta_0, r')$ . Otherwise, for any point of  $\beta'$  that lies in  $B(\beta_\ell, r')$ , the point  $\beta'_0$  is not the closest point on  $\beta_\perp^{r'}$ , contradicting Lemma 3.7. Suppose now that  $\beta_\perp^{r'}$  and  $\beta_\perp^\ell$  intersect in the point  $p$ . Since  $\beta_\perp^{r'}$  does not intersect  $B(\beta_0, r')$ , the geodesic segment  $[\beta'_0, p] \subset \beta_\perp^{r'}$  does not intersect  $B(\beta_\ell, r_0)$  which contradicts Lemma 3.9. Hence, the geodesics  $\beta_\perp^{r'}$  and  $\beta_\perp^\ell$  do not intersect when  $\ell_0 > 2r'$ , from which we deduce  $\mathbb{H}^2 - \text{Sh}(\beta'_0) \subseteq \mathbb{H}^2 - \text{Sh}(\beta_\ell)$ . ■

### 3.11. Ladders

The universal cover  $\mathbb{H}^3$  can be equipped with the  $\mathbb{Z}$ -equivariant pseudo-Anosov flow  $\{\psi_r; r \in \mathbb{R}\}$  such that the time 1-map is the lift of the pseudo-Anosov monodromy  $f$

of the fibred 3-manifold  $M$ . In fact, various lifts to the universal covers of the fibre inclusion  $\Sigma \rightarrow M$  are precisely given by  $\psi_r$  applied to our chosen lift

$$\mathbb{H}^2 \rightarrow \mathbb{H}^3.$$

We will call these lifts the  $r$ -fibres in  $\mathbb{H}^3$ . As a notational choice, we will denote the inclusion of  $\mathbb{H}^2$  in  $\mathbb{H}^3$  given by the  $r$ -fibre by  $\psi_r(\mathbb{H}^2)$ .

**Definition 3.12.** Let  $\beta$  be a flat geodesic segment in  $\mathbb{H}^2$ . We define the *ladder* given by  $\beta$  to be the set

$$\text{Lad}(\beta) = \bigcup_{r \in \mathbb{R}} \psi_r(\beta).$$

Comparing our definition to the ladders introduced by Mitra in [15], we note two differences.

- (1) In [15], the ladders are constructed for the group extension

$$1 \rightarrow \pi_1(\Sigma) \rightarrow \pi_1(M) \rightarrow \mathbb{Z} \rightarrow 1,$$

and thus, the ladder consists of one segment in each  $\mathbb{Z}$ -coset of  $\pi_1(\Sigma)$ . We operate directly in  $\mathbb{H}^2$  and  $\mathbb{H}^3$ , and our ladders contain the segment  $\psi_r(\beta)$  in each fibre  $\psi_r(\mathbb{H}^2)$ . As  $\pi_1(\Sigma)$  and  $\pi_1(M)$  act co-compactly on  $\mathbb{H}^2$  and  $\mathbb{H}^3$ , the two points of view are equivariantly quasi-isometric by the Svarc–Milnor lemma.

- (2) Secondly, in [15], when the segment  $\beta$  in  $\pi_1(\Sigma)$  is moved to a different fibre, it is pulled tight in the metric on the coset. In our setup, the maps  $\psi_r$  are affine maps. As a result, the segment  $\psi_r(\beta)$  is already geodesic in the corresponding flat metric on  $\psi_r(\mathbb{H}^2)$ .

Thus, [15, Lemma 4.1] applies, and in our notation, this translates as follows.

**Lemma 3.13.** *For any geodesic  $\beta$  in the flat metric, the ladder  $\text{Lad}(\beta)$  is quasi-convex in the singular solv metric on  $\mathbb{H}^3$  with quasi-convexity constants independent of  $\beta$ .*

As the singular flat metric and the singular solv metric are quasi-isometric to the hyperbolic metrics on  $\mathbb{H}^2$  and  $\mathbb{H}^3$ , quasi-convexity of ladders is also true for the hyperbolic metrics. We will continue the geometric discussion for the singular flat and singular solv metrics.

We now consider the ladders defined by shadows, namely, the sets

$$L(\beta, t) ::= \bigcup_{x \in \text{Sh}(\beta_t)} \bigcup_{r \in \mathbb{R}} \psi_r(x).$$

By Lemma 3.6 and item (2) above, the lemma below immediately follows.

**Lemma 3.14.** *Let  $\beta : [0, T] \rightarrow \mathbb{H}^2$  be a parameterised flat geodesic, and let  $0 < s < t \leq T$ . Then,*

$$L(\beta, t) \subsetneq L(\beta, s).$$

### 3.15. Undistorted segments

To quantify (un)distortion of segments, we use the following definition.

**Definition 3.16.** For a constant  $K \geq 1$ , we say that a flat geodesic segment  $\beta : [0, T] \rightarrow \mathbb{H}^2$  is  $K$ -undistorted if  $d_{\text{solv}}(\beta_0, \beta_T) \geq T/K$ .

The requirement that a segment be undistorted translates to the following geometric criterion.

Let  $\lambda_{\pm}$  be the stable and unstable foliations for the pseudo-Anosov monodromy  $f$ . If a flat geodesic segment makes a definite angle with both foliations  $\lambda_{\pm}$ , then it cannot be shortened beyond a factor that depends only on the bound on the angle. As a result, it is undistorted.

To be more precise, let  $\beta = [\beta_0, \beta_t]$  be a flat geodesic segment. We may write  $\beta$  as a concatenation

$$\beta = [\beta_0, \beta_{s_1}] \cup [\beta_{s_1}, \beta_{s_2}] \cup \cdots \cup [\beta_{s_{k-1}}, \beta_{s_k}],$$

where  $s_k = t$  and where  $\beta_{s_j}$  is a singularity for all  $1 \leq j \leq k - 1$ . We then let

$$\text{Slope}(\beta) = \{m_j : m_j \text{ is the slope of } [\beta_{s_{j-1}}, \beta_{s_j}] \text{ for } 1 \leq j \leq k\}.$$

One could now precisely quantify the maximal  $K$  so that  $\beta$  is  $K$ -undistorted in terms of  $\text{Slope}(\beta)$ , but since we do not make a particular use of it, we refrain from doing so.

For our purposes, the following soft definition suffices.

**Definition 3.17.** For  $\ell > 0$ , we say that a flat geodesic segment  $\beta$  of flat length is  $\ell$ -good if

- the length of  $\beta$  is at least  $3\ell$ ;
- all slopes  $m$  in  $\text{Slope}(\beta)$  satisfy  $1/2 < |m| < 2$ .

The choice of the slope bound is arbitrary, and it will only affect the constant of undistortion and other coarse constants to follow.

We first list a consequence of the slope bounds.

**Lemma 3.18.** *Let  $\beta : [0, t] \rightarrow \mathbb{R}$  be a flat geodesic segment with slope  $m$  satisfying  $1/2 < |m| < 2$ . Then,  $\beta$  is a quasi-geodesic in  $\text{Lad}(\beta)$ , and there is a constant  $c := c(m)$  such that  $d_{\text{solv}}(\text{Lad}(\beta_0), \text{Lad}(\beta_t)) \geq c \cdot t$ .*

*Proof.* The ladder  $\text{Lad}(\beta)$  intersects the  $r$ -fibre in  $\psi_r(\beta)$ . Since  $\psi_r$  is pseudo-Anosov flow, the slope bounds imply that there is a constant  $c > 0$  that depends only on the bounds such that for any  $r \in \mathbb{R}$  the flat length of  $\psi_r(\beta)$  in the fibre  $\psi_r(\mathbb{H}^2)$  is at least  $c \cdot l_{\text{flat}}(\beta)$ . We deduce that any path in  $\text{Lad}(\beta)$  that connects  $\text{Lad}(\beta_0)$  with  $\text{Lad}(\beta_t)$  must also have length at least  $c \cdot l_{\text{flat}}(\beta)$ . The lemma follows. ■

From Lemma 3.18, we deduce the lemma below, the key reason why we need the notion of  $\ell$ -good segments.

**Lemma 3.19.** *There is a constant  $B > 0$  such that every  $\ell$ -good segment is a  $B$ -quasi-geodesic in the singular solv metric on  $\mathbb{H}^3$ .*

*Proof.* By Lemma 3.13, ladders are quasi-convex in the singular solv metric on  $\mathbb{H}^3$ , hence undistorted. Thus, a singular solv geodesic from  $\text{Lad}(\beta_0)$  to  $\text{Lad}(\beta_t)$  is contained in a bounded neighbourhood of  $\text{Lad}(\beta)$ . So, it suffices to show that if  $\beta$  is  $L$ -good, then it is a quasi-geodesic in  $\text{Lad}(\beta)$ . To this end, we may write  $\beta$  as a concatenation

$$\beta = [\beta_0, \beta_{s_1}] \cup [\beta_{s_1}, \beta_{s_2}] \cup \cdots \cup [\beta_{s_{k-1}}, \beta_{s_k}].$$

Then,

$$\text{Lad}(\beta) = \text{Lad}([\beta_0, \beta_{s_1}]) \cup \text{Lad}([\beta_{s_1}, \beta_{s_2}]) \cup \cdots \cup \text{Lad}([\beta_{s_{k-1}}, \beta_{s_k}]),$$

and by Lemma 3.18, each segment  $[\beta_{s_{j-1}}, \beta_{s_j}]$  is quasi-geodesic in the corresponding sub-ladder  $\text{Lad}([\beta_{s_{j-1}}, \beta_{s_j}])$ . Also, by Lemma 3.18, each ladder  $\text{Lad}(\beta_{s_j})$  is well separated from its predecessor  $\text{Lad}(\beta_{s_{j-1}})$  and its successor  $\text{Lad}(\beta_{s_{j+1}})$  by distances that are linear in the lengths of the segments  $[\beta_{s_{j-1}}, \beta_{s_j}]$  and  $[\beta_{s_j}, \beta_{s_{j+1}}]$ , and hence the concatenation is a quasi-geodesic. ■

**Lemma 3.20.** *For any  $\ell > 0$ , there is an  $\ell$ -good segment.*

*Proof.* The discreteness of saddle connection periods and the quadratic growth for the number of saddle connections (counted by length) in every sector of slopes implies the existence of a good segment. See [13, 14] for these facts. In fact, this shows that a single saddle connection can be chosen as a good segment instead of a concatenation. We also remark that the existence could be shown with more elementary means, but we refrain from doing so for brevity. ■

We now derive nesting along ladders of shadows along  $\ell$ -good segments (compare Figure 3.21).

**Lemma 3.22.** *There exists a constant  $D \geq 1$  such that, for  $\ell$  sufficiently large, any  $\ell$ -good segment  $\beta$*

$$\frac{1}{D}\ell \leq d_{\text{solv}}(\text{Lad}(\beta_{\perp}^{\ell}), \text{Lad}(\beta_{\perp}^{2\ell})) \leq D\ell.$$

In other words, the flat geodesic segment  $\beta$  is coarsely the line of nearest approach for the ladders; that is, it gives coarsely the shortest distance between the ladders.

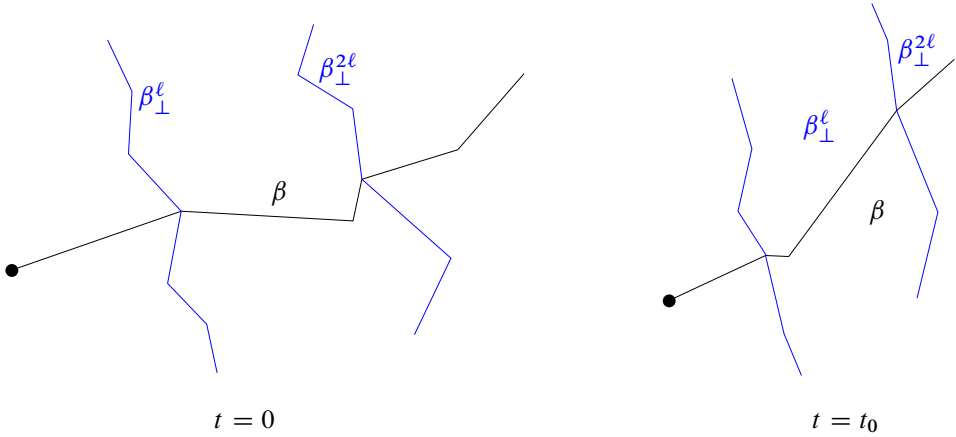
*Proof.* By Lemma 3.19,  $\beta$  is a quasi-geodesic in the singular solv metric. The upper bounds follow immediately from this.

By construction, at every singularity contained in  $\beta_{\perp}^{\ell}$ , the angle subtended on one side is exactly  $\pi$ . Similarly for  $\beta_{\perp}^{2\ell}$ . Because of the constraints on  $\text{Slope}(\beta)$ , it follows that all slopes  $m$  in  $\text{Slope}(\beta_{\perp}^{\ell})$  and in  $\text{Slope}(\beta_{\perp}^{2\ell})$  also satisfy

$$1/2 < |m| < 2.$$

By Lemma 3.19,  $\beta$ ,  $\beta_{\perp}^{\ell}$ , and  $\beta_{\perp}^{2\ell}$  are quasi-geodesics in  $\mathbb{H}^3$  for the singular solv metric.





**Figure 3.21.** A good segment forces separation of shadows over all fibres (Lemma 3.22). The left part of the figure shows the configuration in the base fibre. The middle segment of  $\beta$  is assumed to be  $\ell$ -good. Moving to a different fibre, shown on the right, changes the geometry, but goodness of the middle segment ensures that the distance between (the images of)  $\beta_\perp^\ell$ ,  $\beta_\perp^{2\ell}$  is still large, leading to definite separation of the corresponding shadows.

Let  $x \in \beta_\perp^\ell$  and  $x' \in \beta_\perp^{2\ell}$ . By arguing as in Lemma 3.9, the flat geodesic segment  $[x, x']$  fellow-travels the concatenation  $[x, \beta_\ell] * [\beta_\ell, \beta_{2\ell}] * [\beta_{2\ell}, x']$ , where  $[x, \beta_\ell] \subset \beta_\perp^\ell$  and  $[\beta_{2\ell}, x'] \subset \beta_\perp^{2\ell}$ . This implies that if  $\ell$  is sufficiently large all slopes in  $[x, x']$  are bounded away from the horizontal and vertical. Thus,  $[x, x']$  is also a quasi-geodesic in the singular solv metric, and the result follows from this and the fellow-travelling. ■

## 4. Hyperbolic geometry

We now pass to the hyperbolic metrics on the fibre and the 3-manifold. Recall that we denote the hyperbolic metric on  $\mathbb{H}^2$  by  $d_{\text{hyp}}$  and the hyperbolic metric on  $\mathbb{H}^3$  by  $D_{\text{hyp}}$ .

The metrics  $(\mathbb{H}^2, d_{\text{flat}})$  and  $(\mathbb{H}^2, d_{\text{hyp}})$  are quasi-isometric, so are the metrics  $(\mathbb{H}^3, d_{\text{solv}})$  and  $(\mathbb{H}^3, D_{\text{hyp}})$ . Let  $(K_1, A_1)$  and  $(K_2, A_2)$  be the quasi-isometry constants in each case, and set  $K = \max\{K_1, K_2\}$ ,  $A = \max\{A_1, A_2\}$ .

As a consequence of these quasi-isometries, we can recast Lemma 3.4 and the quasi-convexity of ladders in  $(\mathbb{H}^3, d_{\text{solv}})$  in the previous section to conclude that for any parameterised flat geodesic  $\beta : [0, T] \rightarrow (\mathbb{H}^2, d_{\text{flat}})$  and any  $0 < t \leq T$

- $\text{Sh}(\beta_t)$  is quasi-convex in  $(\mathbb{H}^2, d_{\text{hyp}})$ ;
- $L(\beta, t) = \text{Lad}(\text{Sh}(\beta_t))$  is quasi-convex in  $(\mathbb{H}^3, D_{\text{hyp}})$ .

Let  $C_1$  be the quasi-convexity constant in the first instance and  $C_2$  the quasi-convexity constant in the second instance. Set  $C = \max\{C_1, C_2\}$ .

### 4.1. Non-backtracking

Let  $\gamma : (\infty, \infty) \rightarrow \mathbb{H}^2$  be a hyperbolic geodesic parameterised by unit speed with  $x^{-\infty}$  and  $x^\infty$  in  $S^1$  its points at infinity, where  $\gamma_t \rightarrow x^{\pm\infty}$  as  $t \rightarrow \pm\infty$ . Let  $\beta$  be a bi-infinite flat geodesic that also converges to  $x^{\pm\infty}$ . Note that  $\beta$  might not be unique, but any such geodesic fellow-travels  $\gamma$  in the hyperbolic metric. By resetting the constant  $C$ , we may assume that the fellow-travelling constant in both hyperbolic and flat metrics can also be chosen to be  $C$ .

By the same proof as Lemma 3.7, there is a unique point  $p$  in  $\beta$  that is closest to the point  $\gamma_0$  in the flat metric. We parameterise  $\beta$  with unit speed such that  $\beta_s \rightarrow x^{\pm\infty}$  as  $s \rightarrow \pm\infty$  and  $\beta_0 = p$ .

For any time  $t$  along  $\gamma$  such that  $t/K - A \geq 0$ , the flat distance between  $\gamma_0$  and  $\gamma_t$  is at least  $t/K - A$ . Thus, the flat distance between  $\beta_0$  and  $\gamma_t$  is at least  $t/K - A - C$ . Thus, for any  $t$  that satisfies

$$(t/K) - A \geq 2C,$$

the point  $\gamma_t$  is contained in  $\text{Sh}(\beta_{s(t)})$ , where

$$s(t) = \frac{t}{K} - A - 2C. \quad (4.2)$$

Recalling our notation  $L(\beta, u) = \text{Lad}(\text{Sh}(\beta_u))$ , define the function  $f_\gamma : \mathbb{R}_{\geq 0} \rightarrow \mathbb{R}_{\geq 0}$  by

$$f_\gamma(t) = D_{\text{hyp}}(\gamma_0, L(\beta, s(t))),$$

and note that since  $\gamma_t$  is contained in  $\text{Sh}(\beta_{s(t)})$ , we have  $f_\gamma(t) \leq D_{\text{hyp}}(\gamma_0, \gamma_t)$ .

Since  $s(t) < s(t')$  whenever  $t < t'$  and since the ladders of nested shadows are nested, we have  $f_\gamma(t) \leq f_\gamma(t')$ ; that is,  $f_\gamma$  is a non-decreasing function of  $t$ . To prove Theorem 2.2, it then suffices to prove that  $f_\gamma(t)$  grows linearly in  $t$ .

### 4.3. Progress certificate

We fix  $\rho > 0$  and set the constant  $r$  in Lemma 3.14 to be

$$r = K\rho + A + C.$$

With this value of  $r$ , we choose  $\ell > 0$  to be large enough so that both Lemma 3.14 and Lemma 3.22 hold. By increasing  $\ell$  further, we may assume that  $\ell/(KD) - A > 0$  and then set

$$R = \ell/(KD) - A.$$

We now choose an  $\ell$ -good segment  $\beta$ .

We now define a subset in  $T^1(\Sigma)$  that will certify progress in the hyperbolic metric. Let  $B(\beta_0, \rho)$  the ball with radius  $\rho > 0$  in the hyperbolic metric centred at  $\beta_0$ . Let  $V$  be the subset of  $T^1 B(\beta_0, \rho)$  consisting of those unit tangent vectors  $v$  such that the forward geodesic ray  $\gamma_t = g_t v$  passes through the hyperbolic ball  $B(\beta_{3\ell}, \rho)$  centred at  $\beta_{3\ell}$ . Let  $\Lambda$  be the image in  $T^1(\Sigma)$  of  $V$  under the covering projection.

Extending the hyperbolic geodesic  $\gamma$  considered in the above paragraph to make it bi-infinite, let  $\beta'$  be any flat bi-infinite geodesic that converges to the same points at infinity as  $\gamma$ . We may parameterise  $\beta'$  with unit flat speed so that

- $\beta'_s$  and  $\gamma_s$  converge to the same point at infinity as  $s \rightarrow \infty$ ;
- $\beta'_0$  is the point on  $\beta'$  closest to  $\gamma_0$  in the flat metric.

By our choice of constants, it follows that  $d_{\text{flat}}(\beta'_0, \beta_0) < r$  and  $d_{\text{flat}}(\beta'_t, \beta_{3\ell}) < r$  for some  $t$  satisfying  $3\ell - 2r < t < 3\ell + 2r$ . Then, by Lemma 3.14,  $\mathbb{H}^2 - \text{Sh}(\beta'_0) \subseteq \mathbb{H}^2 - \text{Sh}(\beta_\ell)$  and  $\text{Sh}(\beta'_t) \subseteq \text{Sh}(\beta_{2\ell})$ . By the choice of constants and Lemma 3.22, it follows that

$$D_{\text{hyp}}(\mathbb{H}^3 - L(\beta', 0), L(\beta', t)) \geq D_{\text{hyp}}(\text{Lad}(\text{Sh}(\beta'_\perp)), \text{Lad}(\text{Sh}(\beta_{2\ell}))) \geq R.$$

We now suppress the discussion on the good segment to summarise the conclusions as follows.

**Remark 4.4.** Let  $\gamma$  be a bi-infinite hyperbolic geodesic, and let  $\beta$  be a parameterised flat geodesic such that it converges to the same points at infinity as  $\gamma$  forwards and backwards and  $\beta_0$  is the closest point on  $\xi$  in the flat metric to  $\gamma_0$ . Let  $p(t)$  be the flat time such that  $\beta_{p(t)}$  is the point of  $\beta$  closest to  $\gamma_t$ . There exists constants  $r, \ell > 0$  such that if after projecting to  $T^1(\Sigma)$  the unit tangent vector  $v(\gamma_t)$  is in  $\Lambda$ , then  $D_{\text{hyp}}(\mathbb{H}^3 - L(\beta, p(t)), L(\beta, p')) \geq R$  for some  $p' \leq p(t) + 3\ell + 2r$ .

Let  $\mu_{\text{Lio}}$  be the Liouville measure on  $T^1(\Sigma)$ . We may normalise the measure to be a probability measure. Then, note that  $\mu_{\text{Lio}}(\Lambda) > 0$ . We set  $m = \mu_{\text{Lio}}(\Lambda)$ .

## 5. Linear progress in the fibre for a fibred hyperbolic 3-manifold

We will now derive linear progress, namely, Theorem 2.2.

*Proof of Theorem 2.2.* Let  $\gamma$  and  $\beta$  be, respectively, hyperbolic and flat geodesics as in Remark 4.4.

Recall Equation (4.2) for  $s(t)$ . Given  $t > K(A + 2C)$ , the set of times  $\{u : p(u) \leq s(t)\}$  is closed and bounded above. Let  $w$  be its maximum, and note that  $w \geq (1/K)s(t) - A - 2C$ .

Let  $n_\gamma(w)$  be the number of visits by  $\gamma$  to  $\Lambda$  (in the sense above) till time  $w$ . From Remark 4.4, we conclude  $D_{\text{hyp}}(L(\beta, 0), L(\beta, p(w))) \geq (n_\gamma(w) - 1)R$ .

Since  $p(w) \leq s(t)$ , Lemma 3.14 implies that  $D_{\text{hyp}}(L(\beta, 0), L(\beta, s(t))) \geq (n_\gamma(w) - 1)R$ . We deduce

$$f_\gamma(t) = D_{\text{hyp}}(\gamma_0, L(\beta, s(t))) \geq (n_\gamma(w) - 1)R - C. \quad (5.1)$$

Let  $\chi_\Lambda$  be the characteristic function of  $\Lambda$ . In each visit,  $\gamma$  spends time at most  $2\rho$  in  $\Lambda$ . Hence,

$$n_\gamma(w) \geq \frac{1}{2\rho} \int_0^w \chi_\Lambda(v(\gamma_t)) dt. \quad (5.2)$$

By the ergodic theorem, for  $\mu_{\text{Lio}}$ -almost every  $v \in T^1\Sigma$ , any lift  $\gamma$  in  $\mathbb{H}^2$  of the hyperbolic ray determined by  $v$ , satisfies

$$\lim_{w \rightarrow \infty} \frac{1}{w} \int_0^w \chi_\Lambda(g_t v) dt = m.$$

In particular, there exists a time  $w_v > 0$  depending only on  $v$  such that

$$\frac{1}{w} \int_0^w \chi_\Lambda(g_t v) dt \geq \frac{m}{2} \quad (5.3)$$

for all  $w > w_v$ . Given  $v$ , let  $t_v$  be a time along  $\gamma$  such that  $s(t_v) \geq p(w_v)$ .

By combining Equation (5.1), Equation (5.2), and Equation (5.3), we conclude that for  $\mu_{\text{Lio}}$ -almost every  $v \in T^1\Sigma$ , along any lift  $\gamma$  in  $\mathbb{H}^2$  of the hyperbolic geodesic ray determined by  $v$ , we get

$$f_\gamma(t) \geq \left( \frac{mw}{4\rho} - 1 \right) R$$

for all  $t > t_v$ . Since  $w \geq (1/K)s(t) - A - 2C = (1/K^2)T - \text{constants}$ , we conclude the proof of Theorem 2.2.  $\blacksquare$

*Proof of Theorem 2.4.* We record some observations from flat geometry. Let  $\beta[x, p]$  be a flat geodesic ray from the base point  $x$  to a point  $p \in S^1 = \partial\mathbb{H}$ . We may write  $\beta$  as a (possibly infinite) concatenation  $\beta_1 \cup \beta_2 \cup \dots$  of saddle connections, or slightly more precisely, where  $\beta_{j-1} \cap \beta_j$  is a singularity for all  $j \geq 2$ . The vertical and horizontal foliations of the pseudo-Anosov monodromy  $f$  are uniquely ergodic. In particular, they are minimal; that is, every leaf is dense. Hence, they have no saddle connections. We infer that only the initial segment  $\beta_1$  and in case of a finite concatenation the terminal segment  $\beta_n$  can possibly be vertical/horizontal. We then define the *tilted length* of  $\ell_{\text{tilt}}(\beta)$  to be

$$\ell_{\text{tilt}}(\beta) = \sum_{m_j \in \text{Slope}(\beta): 0 < |m_j| < \infty} \ell(\beta_j).$$

By the discreteness of saddle connection periods, it follows that, given  $\ell > 0$ , the set of  $p \in S^1$  such that  $\ell_{\text{tilt}}(\beta[x, p]) < 2\ell$  is finite.

Since  $\mu$  is non-elementary, the limit set  $\text{Lim}(G_\mu) \subset S^1 = \partial_\infty\mathbb{H}$  of the semi-group  $G_\mu$  generated by the support of  $\mu$  is infinite. It follows that, for any  $\ell > 0$ ,  $\text{Lim}(G_\mu)$  contains a point  $p$  such that the flat geodesic ray  $\beta[x, p]$  has tilted length exceeding  $3\ell$ . Parameterising  $\beta$  by arc length, it follows that there exists a time  $T$  such that the tilted lengths of the segments  $[\beta_0, \beta_T]$ ,  $[\beta_T, \beta_{2T}]$ , and  $[\beta_{2T}, \beta_{3T}]$  all exceed  $\ell$ . To be precise, we may write  $\beta$  as a concatenation such as above and then only the initial segment in the concatenation can be horizontal or vertical. In particular,  $T$  could be taken to be the flat length of this initial segment plus  $\ell$ . Once chosen, there is also a constant  $\kappa > 0$  such that any slope  $m_j$  along  $[\beta_0, \beta_{3T}]$  that is not horizontal nor vertical satisfies  $1/\kappa < |m_j| < \kappa$ . Except for (potentially) a horizontal or vertical prefix, the segment  $\beta_{3T}$  satisfies the requirements of a good segment; that is, it contains three subsegments of length at least

$\ell$  such that the absolute values of the slopes of the saddle connections along them are bounded away from 0 and  $\infty$  by  $\kappa$ . In particular, the segment  $[\beta_0, \beta_{3T}]$  can be used as a linear progress certificate for the metric  $D$ , where the progress achieved will depend on this bound  $\kappa$ .

We now consider  $\text{Sh}(\beta_{3T})$  and denote by  $\partial_\infty \text{Sh}(\beta_{3T})$  the limit set at infinity of the shadow. By definition of the limit set, fixed points of hyperbolic isometries are dense in  $\text{Lim}(G_\mu)$ , and since we are in the semigroup, we can find an element  $g$  in it such that the stable fixed point  $p'$  of  $g$  is contained in the interior of  $\partial_\infty \text{Sh}(\beta_{3T})$ .

Let  $\nu$  be the stationary measure for the random walk, and let  $I$  be a subset of  $S^1$  such that  $\nu(I) > 0$ . Let  $k \geq 0$  be the smallest integer such that  $g^k I \subset \partial_\infty \text{Sh}(\beta_{3T})$ . By stationarity of  $\nu$ ,

$$\nu(g^k I) = \mu^{(k)}(g^k) \nu(g^{-k} g^k I) + \sum_{h \neq g^k} \mu^{(k)}(h) \nu(h^{-1} I),$$

where  $\mu^{(k)}$  is the  $k$ -fold convolution of  $\mu$ . Notice that the first term on the right is strictly positive because both  $\mu^{(k)}(g^k)$  and  $\nu(I)$  are strictly positive. We deduce that

$$\nu(\partial_\infty \text{Sh}(\beta_{3T})) \geq \nu(g^k I) > 0.$$

Denote  $\nu(\partial_\infty \text{Sh}(\beta_{3T}))$  by  $\alpha$ .

As discussed at the beginning of Section 4.3, we now consider the set  $\Omega$  of bi-infinite sample paths. By convergence to the boundary, almost every  $\omega \in \Omega$  defines a bi-infinite hyperbolic geodesic  $\gamma_\omega$  in  $\mathbb{H}^2$ . For  $R > 0$ , let  $\Omega_R$  be the subset of those  $\omega$  such that  $d(\gamma_\omega, x) < R$ . The subset  $R$  is measurable, and as  $R \rightarrow \infty$ , we have  $(\nu \times \widehat{\nu})(\Omega_R) \rightarrow 1$ . Hence, we may choose  $R > 0$  such that  $(\nu \times \widehat{\nu})(\Omega_R) > 1 - \alpha/2$ .

Let  $\Lambda'$  be the subset of  $\Omega_R$  of those  $\omega = (w_n)$  such that  $w_n x \rightarrow \partial \text{Sh}(\beta_{3T})$ . It follows that  $(\nu \times \widehat{\nu})(\Lambda') > \alpha/2$ . In this context,  $\Lambda'$  will serve as the progress certificate analogous to the subset  $\Lambda$  of the unit tangent bundle defined in Section 4.3.

We now consider the shift map  $\sigma : \Omega \rightarrow \Omega$ . Recall that for almost every bi-infinite sample path  $\omega$  we get the tracked bi-infinite geodesic  $\gamma_\omega$ . Let  $\gamma_\omega(j)$  be the point of  $\gamma_\omega$  closest to  $w_j x$ .

By combining linear progress and sub-linear tracking in the metric  $d$ , namely, [12, Theorems 1.2 and 1.3], we deduce that for almost every

$$\omega = (w_n),$$

the distance  $d(\gamma_\omega(0), \gamma_\omega(n))$ , where  $\gamma_\omega(j)$  is the point of  $\gamma_\omega$  closest to  $w_j x$ , grows linearly in  $n$ .

By the ergodicity of  $\sigma$ , it follows that the asymptotic density of times  $j$  such that  $\sigma^j(\omega) \in \Lambda'$  approaches  $(\nu \times \widehat{\nu})(\Lambda')$ , which exceeds  $\alpha/2$ ; in particular, it is positive. Finally, the geodesic rays  $\gamma_\omega$  and the ray from  $x$  to the same point at infinite are positively asymptotic; that is, up to the choice of an appropriate base point, the distance between the corresponding points on the rays goes to zero. Theorem 2.4 then follows by the same arguments as the proof of Theorem 2.2.  $\blacksquare$

## 6. Linear progress in analogous settings

**Remark 6.1.** We were very explicit about the constructions for fibred hyperbolic 3-manifolds, but as the astute reader may have observed, the proofs rely on weaker features. We distill the essential features below.

- (1) A  $\pi_1(\Sigma)$ -equivariant assignment of shadows along any geodesic ray in the fibre with the property that if  $0 < t$  is a sufficiently large time and  $t < t'$ , then  $\text{Sh}(\gamma_t) \subseteq \text{Sh}(\gamma_{t'})$ .
- (2) A ladder-like construction in the total space with the property that if a shadow is contained in another shadow, then its ladder is contained in the ladder of the other.
- (3) The existence of finite segments in the fibre that achieve a specified nesting of ladders; that is, for any sufficiently large  $R > 0$ , there exists a segment  $\beta$  of length  $3\ell = O(R)$  and  $\rho > 0$  such that
  - the ball  $B(\beta_0, \rho)$  in the fibre is contained in the complement of  $\text{Sh}(\beta_\ell)$ ;
  - the ball  $B(\beta_{3\ell}, \rho)$  is contained in  $\text{Sh}(\beta_{2\ell})$ ;
  - for any geodesic segment  $[\beta'_0, \beta'_T]$  such that  $\beta'_0 \in B(\beta_0, \rho)$  and  $\beta'_T \in B(\beta_{3\ell}, \rho)$  the shadows satisfy  $\text{Sh}(\beta_\ell) \subseteq \text{Sh}(\beta'_0)$  and  $\text{Sh}(\beta'_T) \subseteq \text{Sh}(\beta_{2\ell})$ ;
  - $D_{\text{total}}(\partial \text{Lad}(\text{Sh}(\beta_\ell)), \partial \text{Lad}(\text{Sh}(\beta_{2\ell}))) > R$ ;
 refer to Figure 6.2 for this confirmation.
- (4) For a good segment  $\beta$  that satisfies (3) above, the set of geodesics in the fibre that pass through  $B(\beta_0, \rho)$  and  $B(\beta_{3\ell}, \rho)$  have a positive mass in the measure used for the sampling.

Our proofs hold verbatim for fibrations (with surface/surface group fibres) that exhibit these features establishing that a typical geodesic ray in the fibre makes linear progress in the metric on the total space.

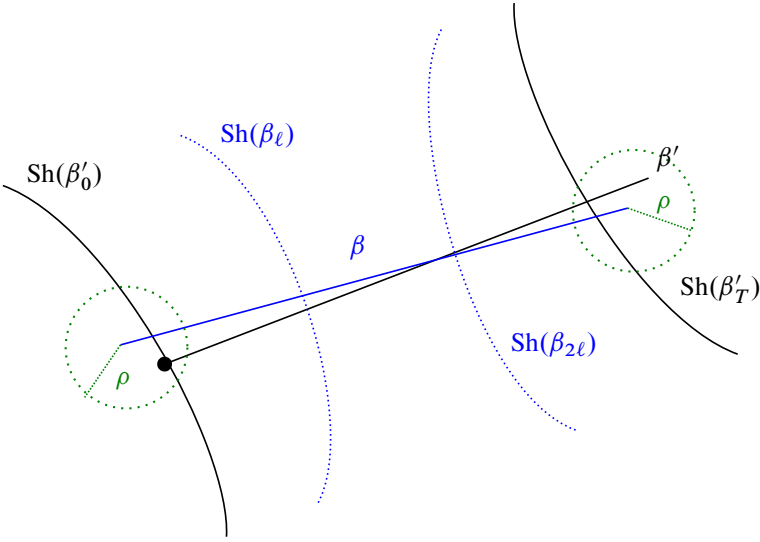
We will now give some explicit settings where these essential features hold and thus derive linear progress in the fibre. We start with Gromov hyperbolic extensions of surface groups, and then consider canonical bundles over Teichmüller discs, and finally the Birman exact sequence. In each case, different parts need to be adapted to check that the features in Remark 6.1 hold but the general strategy remains the same.

### 6.3. Hyperbolic extensions

In this section, we discuss a finitely generated group extension

$$1 \rightarrow \pi_1(\Sigma) \rightarrow \Gamma \rightarrow Q \rightarrow 1,$$

where  $\Gamma$  is a hyperbolic group. We make no assumptions on  $Q$  but remark that, in all known examples of this form, the group  $Q$  is virtually free. It is wide open if other examples exist, for instance, if there is a hyperbolic extension of  $\pi_1(\Sigma)$  by the fundamental group  $\pi_1(\Sigma')$  of another closed surface  $\Sigma'$  with negative Euler characteristic.



**Figure 6.2.** The general setup for shadows, as in Remark 6.1 (3).  $\beta$  is a good segment, whose endpoints are close to a segment  $\beta'$ . The nesting of “inner” shadows of  $\beta$ ,  $\beta'$ , together with the separating of the “outer” shadows of  $\beta$ ,  $\beta'$  imply separation of shadows for  $\beta'$ , which is retained by its images in all fibres.

We fix a finite generating set for  $\Gamma$  that contains a generating set for  $\pi_1(\Sigma)$ , and we equip  $\Gamma$  with the corresponding word metric. We also choose, once and for all, an equivariant quasi-isometry

$$G : \mathbb{H}^2 \rightarrow \pi_1(\Sigma),$$

and a base point  $x_0 \in \mathbb{H}^2$  with  $G(x_0) = 1$ . We use it to identify the kernel  $\pi_1(\Sigma)$  of  $p : \Gamma \rightarrow Q$  with the hyperbolic plane. Such a choice is not unique (it is only up to quasi-isometry) – but we make the choice to use it later to sample geodesics in  $\mathbb{H}^2$ .

By a result of Mosher, namely, [16, Theorem B], any short exact sequence such as above with a hyperbolic, non-elementary kernel (like  $\pi_1(\Sigma)$ ) admits a quasi-isometric section  $\sigma : Q \rightarrow \Gamma$  with  $\sigma(1) = 1$ .

Fixing such a section, any  $q \in Q$  induces a quasi-isometry  $\psi_q : \pi_1(\Sigma) \rightarrow \pi_1(\Sigma)$  by conjugation with  $\sigma(q)$ ; that is,  $\psi_q(g) = \sigma(q)^{-1}g\sigma(q)$ .

Suppose that  $\beta$  is an infinite geodesic ray in  $\pi_1(\Sigma)$  starting at 1. The closest-point projection to  $\beta$  is coarsely well defined; that is, the image in  $\beta$  of the set of closest points has bounded diameter. For any point  $r \in \beta$ , let  $N(\beta, r)$  denote the set of all points in  $\pi_1(\Sigma)$  whose closest-point projection to  $\beta$  (as a set) lies after  $r$ . The Gromov boundary of  $\pi_1(\Sigma)$  is a circle, and the limit set  $\partial_\infty N(\beta, r)$  is an interval. We then set our required shadow  $\text{Sh}(\beta, r)$  as the union of all bi-infinite geodesics in  $\pi_1(\Sigma)$  whose both endpoints at infinity are contained in the limit set  $\partial_\infty N(\beta, r)$ . It is clear from the construction that if  $r > r'$ , then  $\text{Sh}(\beta, r) \subseteq \text{Sh}(\beta, r')$  which is the containment property we require our

assignment of shadows to satisfy in feature (1) of Remark 6.1. Furthermore, since  $\pi_1(\Sigma)$  is quasi-isometric to the hyperbolic plane, observe that  $\text{Sh}(\beta, r)$  is a quasi-convex subset of  $\pi_1(\Sigma)$  with a quasi-convexity constant independent of  $r$ .

For any  $q \in Q$ , the corresponding quasi-isometry  $\psi_q$  maps the interval  $\partial_\infty N(\beta, r)$  to a possibly different interval

$$I_q(\beta, r) = (\psi_q)_\infty \partial_\infty N(\beta, r).$$

Let  $\text{Sh}_q(\beta, r)$  be the union of bi-infinite geodesics in  $\pi_1(\Sigma)$  whose both endpoints at infinity are contained in  $I_q(\beta, r)$ .

Define

$$L(\beta, r) = \bigcup_{q \in Q} \sigma(q) \text{Sh}_q(\beta, r).$$

This is our analogous ladder-like construction in this context. Using a slight extension of the methods of [15], we observe the following lemma.

**Lemma 6.4.** *The set  $L(\beta, r)$  is quasi-convex in  $\Gamma$ , and if  $r' > r$ , then*

$$L(\beta, r) \subseteq L(\beta, r').$$

*Proof.* We briefly indicate how the proof in [15] needs to be adapted. The basic strategy is the same – we define a Lipschitz projection  $\Pi : \Gamma \rightarrow L(\beta, r)$ . Since one can then project geodesics in  $\Gamma$  to  $L(\beta, r)$  without increasing their length too much, this will show undistortion. Hyperbolicity of  $\Gamma$  then implies quasi-convexity.

As in [15], the definition of  $\Pi$  involves the *fibrewise* closest-point projection to the sets  $\text{Sh}_q(\beta, r)$ . To show that the projection is Lipschitz, one needs to control the distance between  $\Pi(x)$ ,  $\Pi(y)$  for points  $x, y$  of distance 1. There are two cases to consider. If  $x, y$  are in the same fibre, the estimate stems from the fact that closest-point projections to quasi-convex sets in hyperbolic spaces are Lipschitz. If  $x, y$  lie in adjacent fibres, then the estimate in [15] relies on the fact that quasi-isometries coarsely commute with projections to geodesics in hyperbolic spaces. This fact is still true for projections to quasi-convex sets (with essentially the same proof), and so, the argument extends.

Finally, we note that for  $r < r'$  we have  $\partial_\infty N(\beta, r) \subseteq \partial_\infty N(\beta, r')$  which implies that  $I_q(\beta, r) \subset I_q(\beta, r')$  for all  $q \in Q$ . This then implies  $\text{Sh}_q(\beta, r) \subseteq \text{Sh}_q(\beta, r')$ , and hence,

$$L(\beta, r) \subseteq L(\beta, r'). \quad \blacksquare$$

Lemma 6.4 thus ensures that feature (2) in Remark 6.1 holds.

We now construct appropriate “good” segments to achieve a specified nesting. To start, we need to better understand what the shadows look like at infinity.

**Lemma 6.5.** *In the Gromov boundary  $\partial_\infty \Gamma$ , both  $\partial_\infty L(\beta, r)$  and its complement have non-empty interior.*



*Proof.* We first claim that there is a quasi-geodesic in  $\Gamma$  whose endpoint lies in  $\partial_\infty L(\beta, r)$ . Namely, let  $g \in \pi_1(\Sigma)$  be an element in the fibre so that the sequence  $\beta'_n = g^n$  converges to a point in  $\partial_\infty N(\beta, r)$  as  $n \rightarrow \infty$ . Since the cyclic group generated by any infinite order element in a hyperbolic group is quasi-convex, hence undistorted, (compare, e.g., [1, III.F.3.10]), the sequence  $\beta'_n$  is also a quasi-geodesic in  $\Gamma$ , thus proving the claim.

We now claim that  $\beta'_n$  nests in  $L(\beta, r)$  as  $n \rightarrow \infty$ . That is, we claim that for any distance  $R > 0$  we have  $D_\Gamma(\beta'_n, \partial L(\beta, r)) > R$  for all sufficiently large  $n$ . Note that  $d_{\pi_1(\Sigma)}(\beta'_n, \partial \text{Sh}(\beta, r))$  becomes arbitrarily large as  $n \rightarrow \infty$ . We now choose a radius for a ball  $B$  centred at the identity in  $Q$  such that  $D_\Gamma(1, \sigma(q)) > R$  for all  $q \in Q - B$ . We can then arrange  $n$  to be sufficiently large so that the distance  $D_\Gamma(\beta'_n, \partial \text{Sh}_q(\beta, r)) > R$  for all  $q \in B$ . The claim follows because  $D_\Gamma(\beta'_n, \partial \text{Sh}_q(\beta, r)) > R$  for nearby fibres corresponding to  $q \in B$ , and  $D_\Gamma(1, \sigma(q))$  is a lower bound on  $D_\Gamma(\beta'_n, \partial \text{Sh}_q(\beta, r)) > R$  for all fibres corresponding to  $Q - B$  and  $D_\Gamma(1, \sigma(q)) > R$  was arranged for these fibres.

By the claim above, we can choose  $n$  sufficiently large to arrange that the ball in  $\Gamma$  centred at  $\beta'_n$  is contained deep in  $L(\beta, r)$ ; that is, the distance between any point in the ball and the complement of  $L(\beta, r)$  is large enough. It then follows that all geodesic rays in  $\gamma$  starting at identity and passing through this ball converge to a point in the Gromov boundary that is contained in  $\partial_\infty L(\beta, r)$ . In particular, this means that  $\partial_\infty L(\beta, r)$  has non-empty interior in  $\partial_\infty \Gamma$ .

The claim for the complement  $\partial_\infty \Gamma - \partial_\infty L(\beta, r)$  follows because the complement of  $\text{Sh}(\beta, r)$  in  $\pi_1(\Sigma)$  contains the shadow  $\text{Sh}(\beta^-, r)$ , where  $\beta^-$  is the geodesic ray in  $\pi_1(\Sigma)$  with its initial direction opposite to  $\beta$ . ■

**Corollary 6.6.** *There is an element  $g_0$  of  $\pi_1(\Sigma)$  whose axis has one endpoint in  $\partial_\infty L(\beta, r)$  and one endpoint in the complement of  $\partial_\infty \Gamma - \partial_\infty L(\beta, r)$ .*

*Proof.* One can use an element as in the proof of the previous lemma, also assuming that  $g^n$  converges to a point outside  $\partial_\infty \text{Sh}(\beta, r)$ .

Alternatively, choose open sets  $U^+, U^-$  in  $\partial_\infty L(\beta, r)$  and its complement. Since we have a continuous Cannon–Thurston map, there are intervals  $I^+, I^-$  of the boundary  $\partial_\infty \pi_1(\Sigma)$  mapping (under the Cannon–Thurston map) into  $U^+, U^-$ . We can choose an element  $g_0$  of  $\pi_1(\Sigma)$  whose axis endpoints are contained in  $I^+, I^-$ . This has the desired property. ■

Recall that any infinite order element of a Gromov hyperbolic group acts with north-south dynamics on the Gromov boundary. The element  $g$  guaranteed by the previous corollary will act hyperbolically on  $\Gamma$  with axis endpoints in  $U^+, U^-$ . Thus, a large power  $h = g^N$  has the property that it nests  $L(\beta, r)$  properly into itself; in particular, by choosing  $N$  large enough, we can guarantee that the distance between the boundaries of  $L(\beta, r)$  and  $hL(\beta, r)$  is at least  $R > 0$  for any choice of  $R$ . In other words, similar to  $\ell$ -good segments in the fibred case, feature (3) in Remark 6.1 can be achieved by a geodesic segment  $\beta$  in  $\pi_1(\Sigma)$  from identity to a suitably high power

$$h = g^N.$$

Finally, since  $\partial_\infty \text{Sh}(\beta, r)$  is an interval with non-empty interior, it has positive measure with respect to geodesic sampling using the fixed quasi-isometry  $G : \mathbb{H}^2 \rightarrow \pi_1(\Sigma)$ .

Thus, feature (4) of Remark 6.1 also holds, and hence, by replicating the proof of Theorem 2.4, we conclude that a typical ray in  $\pi_1(\Sigma)$  makes linear progress in  $\Gamma$ .

## 6.7. Teichmüller discs

In this section, we consider the universal curve over a Teichmüller disc.

A marked holomorphic quadratic differential on a closed Riemann surface defines charts to the complex plane via contour integration of a square root of the differential. The transition functions are half-translations, which are of the form  $z \rightarrow \pm z + c$ . The natural action of  $\text{SL}_2(\mathbb{R})$  on  $\mathbb{C} = \mathbb{R}^2$  preserves the form of the transitions and hence descends to an action on such differentials.

Let  $q_0$  be such a quadratic differential on a Riemann surface  $X_0$ . The conformal structure is unchanged under the  $\text{SO}_2(\mathbb{R})$ -action on  $q_0$ , and hence, the image of the orbit  $\text{SL}_2(\mathbb{R})q$  in Teichmüller space is an isometrically embedded copy of

$$\mathbb{H}^2 = \text{SL}_2(\mathbb{R}) / \text{SO}_2(\mathbb{R}).$$

This is called a *Teichmüller disc*. We will use the notation  $D_{q_0}$  for the disc and  $X_0$  for the underlying marked Riemann surface for  $q_0$ . The canonical projection  $\text{SL}_2(\mathbb{R})q_0 \rightarrow D_{q_0}$  exhibits the orbit as the unit tangent bundle of the Teichmüller disc. In particular, since  $D_{q_0}$  is contractible, the unit tangent bundle is trivial.

The universal curve over  $D_{q_0}$  lifts to its universal cover to us gives the bundle

$$\mathbb{H}^2 \rightarrow E \rightarrow D_{q_0}.$$

As discussed in, e.g., [6, Sections 3.3–3.5], the triviality of the unit tangent bundle allows us to equip the total space  $E$  with a metric  $d_E$  as follows.

- We choose a section  $\sigma : D_{q_0} \rightarrow \text{SL}_2(\mathbb{R})q_0$  such that  $\sigma[q_0] = q_0$ .
- We equip the fibre over  $[q]$  with the lift of the singular flat metric on  $\Sigma$  given by the differential  $\sigma[q]$ .

In particular, the metrics on nearby fibres differ by (quasi-conformal) affine diffeomorphisms with bounded dilatation.

In fact, there is a convenient section of the unit tangent bundle. Namely, given any point  $X \in D_q$ , there is a (unique) Teichmüller extremal map from  $X_0$  to  $X$ . The map pushes the quadratic differential  $q_0$  on  $X_0$  to a quadratic differential  $q_X$  on  $X$  – which, if  $X$  is defined by  $Aq$  for  $A \in \text{SL}_2(\mathbb{R})$ , differs from  $Aq$  by a rotation.

We fix, once and for all, an identification of the fibre over the base point  $q$  with the hyperbolic plane  $\mathbb{H}^2$  up to quasi-isometry. The goal is to discuss the behaviour of a typical (hyperbolic) geodesic ray in that fibre for the metric  $d_E$ .

One major difference from the preceding sections is that the total space  $E$  is no longer hyperbolic. This will mandate several adaptations from the previous two cases.

We begin by defining shadows in the fibre as in the fibred 3-manifold case; that is, for a flat geodesic ray  $\beta$ , we set  $\text{Sh}(\beta, r)$  as the shadow in the flat metric that contains the point at infinity  $\partial_\infty\beta$  and has the optimal perpendicular  $\beta^\perp(r)$  as the boundary. As the hyperbolic and the singular flat metric are quasi-isometric, given a hyperbolic ray  $\gamma$  in the fibre and a time  $t$  along it, we can assign the shadow  $\text{Sh}(\beta, s(t))$ , where  $\beta$  is a flat ray fellow-travelling  $\gamma$  for all time and  $s(t)$  is a time along  $\gamma$  assigned as in Equation (4.2). The assigned shadows then satisfy feature (1) in Remark 6.1.

We will now set up to carry out a ladder-like construction in this context. Let  $\beta$  be a flat geodesic. We define the ladder of  $\beta$  by

$$\text{Lad}(\beta) = \bigcup_{X \in D_{q_0}} \sigma(X)(\beta),$$

where, as above,  $\sigma(X)$  is the affine diffeomorphism given by the trivialisation of the unit tangent bundle. Note that since  $\sigma(X)$  is an affine map, it takes a flat geodesic in the fibre over  $X_0$  to a flat geodesic in the fibre over  $X$ .

We then define

$$L(\beta, r) = \bigcup_{X \in D_{q_0}} \sigma(X) \text{Sh}(\beta, r).$$

It follows that along a flat geodesic ray  $\beta$  the sets,  $L(\beta, r)$  satisfies feature (2) in Remark 6.1.

Arguing as in Lemma 6.4 (observing that only the proof of quasi-convexity, and not of undistortion, relies on the hyperbolicity of the ambient space), we obtain the following.

**Lemma 6.8.** *There is a constant  $K$  so that, for any flat geodesic  $\beta$  in  $\mathbb{H}^2$  and  $r > 0$ , the ladder  $\text{Lad}(\beta)$  and the set  $L(\beta, r)$  are  $K$ -undistorted in  $E$  for the bundle metric  $d_E$  defined above.*

Our next aim is to show the existence of finite segments which produce any specified nesting on ladder-like sets. The additional complexity in this particular context is that a single saddle connection has no lower bound on its length over all fibres. To sidestep this issue, we finesse the definition of a good segment.

We consider the collection of flat geodesic segments that are a concatenation of segments of the form

$$\beta = i * v * h * f$$

for which

- (1) the segments  $v$  and  $h$  are saddle connections with different slopes; in particular, we may assume that  $v$  is almost vertical and  $h$  almost horizontal;
- (2) the segments  $i$  and  $f$  have no singularities in their interior;
- (3) the angles  $\theta^L(i, v)$  and  $\theta^L(h, f)$  subtended on the left along  $\beta$  at the singularities satisfy  $\theta^L(i, v) = \theta^L(h, f) = 3\pi/2$ .

Note that condition (3) above implies that the angles  $\theta^R(i, v)$  and  $\theta^R(h, f)$  at the singularities satisfy  $\theta^R(i, v) \geq 3\pi/2$  and  $\theta^R(h, f) \geq 3\pi/2$ . Let  $v'$  and  $v''$  be flat geodesic rays such that the concatenations  $v' * v$  and  $v'' * v$  are also flat geodesics and the angles  $\theta^L(v', v) = \pi$  and  $\theta^R(v', v) = \pi$ . The concatenation  $v' * v''$  is then a bi-infinite flat geodesic. Observe that the angle conditions imply that  $(v' * v'') \cap i_\perp = \emptyset$ . Similarly, let  $h'$  and  $h''$  be flat rays such that the concatenations  $h * h'$  and  $h * h''$  are also flat geodesics and the angles  $\theta^L(h * h') = \theta^R(h * h'') = \pi$ . Then, the concatenation  $h' * h''$  is a bi-infinite flat geodesic and by the same logic regarding angles  $(h' * h'') \cap f_\perp = \emptyset$ .

We now derive the following lemma.

**Lemma 6.9.** *A flat geodesic segment with endpoints on  $i_\perp$  and  $f_\perp$  contains  $v * h$ .*

*Proof.* Let  $\beta'$  be a flat geodesic segment with endpoints  $x_i$  on  $i_\perp$  and  $x_f$  on  $f_\perp$ . Since  $v' * v''$  separates  $x_i$  and  $x_f$ , the segment  $\beta'$  must intersect  $v' * v''$ . Similarly  $\beta'$  must also intersect  $h' * h''$ . Breaking symmetry, suppose that  $\beta'$  intersects  $v'$  and  $h'$  in points  $p$  and  $q$ , respectively. The concatenation  $v' * v * h * h'$  also gives a geodesic segment between  $p$  and  $q$ . This implies that  $\beta'$  and  $v' * v * h * h'$  must coincide between  $p$  and  $q$ , and thus,  $\beta'$  contains  $v * h$ . Identical arguments apply for possibilities for intersections of  $\beta'$  with  $v' * v''$  and  $h' * h''$  which concludes the proof of the lemma. ■

We now parameterise  $\beta$  and denote by times  $s < t$  the midpoints of  $i$  and  $f$  along  $\beta$ . By Lemma 6.9, any flat geodesic from  $\mathbb{H}^2 - \text{Sh}(\beta, s)$  to  $\text{Sh}(\beta, t)$  contains  $v * h$ .

As the maps  $\sigma(X)$  act by affine diffeomorphisms, the corollary below immediately follows.

**Corollary 6.10.** *A flat geodesic segment with endpoints on  $\sigma(X)(i_\perp)$  and  $\sigma(X)(f_\perp)$  contains the segment  $\sigma(X)(v * h)$ .*

Given any  $\ell > 0$ , it is obvious from the asymptotics of saddle connections that we can choose a segment  $\beta$  such that both  $v$  and  $h$  have flat length at least  $\ell$ . We will call such a segment  $\beta$  to be  $\ell$ -good.

With the assumption that  $v$  is almost vertical and  $h$  almost horizontal, notice that  $\sigma(X)(v * h)$  is bounded below by  $O(\ell)$  for any  $X$  in  $D_{q_0}$ .

The main point now follows.

**Lemma 6.11.** *Given  $R > 0$ , there exists  $\ell > 0$  such that for any  $\ell$ -good segment  $\beta = i * v * h * f$  and times  $s < t$  corresponding to midpoints of  $i$  and  $f$  along  $\beta$  any geodesic segment in  $E$  that joins  $E - L(\beta, s)$  to  $L(\beta, t)$  has length at least  $R$ .*

*Proof.* Since the sets  $L(\beta, s)$  and  $L(\beta, t)$  are undistorted by Lemma 6.8, the  $E$ -distance between  $\partial L(\beta, s)$  and  $\partial L(\beta, t)$  can be (coarsely) computed in  $L(\beta, s)$ . So, suppose that a geodesic segment in  $L(\beta, s)$  coarsely gives the distance between  $\partial L(\beta, s)$  and  $\partial L(\beta, t)$ . Let  $x_i \in i_\perp = \partial \text{Sh}(\beta, s)$  and  $x_f \in f_\perp = \partial \text{Sh}(\beta, t)$  be points such that the geodesic segment above has its endpoints in the ladders  $\text{Lad}(x_i)$  and  $\text{Lad}(x_f)$ . Since ladders are also undistorted by Lemma 6.8, it suffices to show that the distance in  $E$  between any

point of  $\text{Lad}(x_i)$  and  $\text{Lad}(x_f)$  is uniformly bounded from below by a constant that is linear in  $\ell$ . This follows from Corollary 6.10 and the observation preceding the lemma that  $\sigma(X)(v * h)$  is bounded below by  $O(\ell)$  for any  $X$  in  $D_{q_0}$ . This means that, given  $R > 0$ , we can indeed find  $\ell > 0$  that achieves the nesting as required. ■

## 6.12. Point-pushing groups

The final setting that we consider is given by the Birman exact sequence

$$1 \rightarrow \pi_1(S_g, p) \rightarrow \text{Mod}(S_g, p) \rightarrow \text{Mod}(S_g) \rightarrow 1.$$

We follow essentially the same strategy as in the previous sections. As in the section on hyperbolic extensions, we construct nested shadows along geodesic rays in the fibre in exactly the same way. The construction of ladders and subsequently the sets  $L(\beta, r)$  is also identical.

The definition of segments that achieve nesting as in point (3) of Remark 6.1 requires care. Roughly speaking, given  $\ell > 0$  sufficiently large, we need a segment such that all  $\text{Mod}(S_g)$  images of it have lengths bounded below by  $O(\ell)$ .

We first recall the following basic fact from elementary hyperbolic geometry.

**Lemma 6.13.** *Let  $S$  be a closed surface. Given any complete hyperbolic structure  $X$  on  $S$  and any  $R > 0$ , there exists a natural number  $k = k(S, R)$  such that any geodesic arc on  $X$  with at least  $k$  self-intersections has length at least  $R$ .*

We now fix a complete hyperbolic structure  $X$  on  $S_g$ . Given  $R > 0$  sufficiently large, let  $k$  be as in Lemma 6.13. Fix a geodesic arc on  $X$  with  $k$  self-intersections. Let  $\gamma$  be a bi-infinite lift in  $\mathbb{H}^2$  of this arc on  $X$ . We parameterise  $\gamma$  with unit speed. Given a time  $s$ , let  $\alpha_s$  be the bi-infinite geodesic orthogonal to  $\gamma$  at  $\gamma_s$ . We let  $H_s^-$  and  $H_s^+$  be the half-spaces with boundary  $\alpha_s$  such that  $\gamma_t$  converges in to  $H_s^-$  as  $t \rightarrow -\infty$  and  $\gamma_t$  converges in to  $H_s^+$  as  $t \rightarrow \infty$ .

We may then choose a time  $s$  sufficiently large such that any geodesic segment  $\gamma'$  with endpoints in  $H_0^- = H_{-s}^-$  and  $H_0^+ = H_s^+$  fellow-travels a long enough arc of  $\gamma$  to ensure that the projection of  $\gamma'$  to  $X$  has at least  $k$  self-intersections. In fact, by passing to a larger  $s$  if required, we can ensure that there are at least  $k$  group elements  $g_i : 1 \leq i \leq k$  such that the half-spaces in the list  $\{H_0^-, H_0^+, g_1 H_0^-, g_1 H_0^+, \dots, g_k H_0^-, g_k H_0^+\}$  are pairwise well separated and the pairs  $(g_i H_0^-, g_i H_0^+)$  all link the pair  $(H_0^-, H_0^+)$ . Let  $I_0^- = \partial_\infty H_0^-$  and  $I_0^+ = \partial_\infty H_0^+$  be the pair of intervals at infinity. Similarly, we get the pairs of intervals  $I_i^- = \partial_\infty g_i H_0^-$  and  $I_i^+ = \partial_\infty g_i H_0^+$ . The separation of half-spaces implies that these intervals are all pairwise disjoint, and along the circle  $S^1 = \partial_\infty \mathbb{H}^2$ , the pairs  $(I_i^-, I_i^+)$  are all linked with the pair  $(I_0^-, I_0^+)$ .

The hyperbolic structure  $X$  defines a group-equivariant quasi-isometry

$$\psi : \mathbb{H}^2 \rightarrow \pi_1(S_g)$$

that gives a homeomorphism  $\psi_\infty$  of their Gromov boundaries. So, we get intervals  $J_i^- = \psi_\infty(I_i^-)$  and  $J_i^+ = \psi_\infty(I_i^+)$  in the Gromov boundary of  $\pi_1(S_g)$ . Being a homeomorphism,  $\psi_\infty$  preserves the linking, and hence, the pairs  $(J_i^-, J_i^+)$  all link  $(J_0^-, J_0^+)$ .

Realising a mapping class on  $S_g$  as an actual automorphism  $f$  of  $\pi_1(S_g)$ , the action of  $f$  on  $\pi_1(S_g)$  extends to a homeomorphism  $f_\infty$  of the Gromov boundary. Hence, the pairs  $(f_\infty(J_i^-), f_\infty(J_i^+))$  continue to link the pair  $(f_\infty J_0^-, f_\infty J_0^+)$ . Let  $H_{f,i}^-$  and  $H_{f,i}^+$  be the half-spaces in  $\mathbb{H}^2$  such that  $\partial_\infty H_{f,i}^- = f_\infty(J_i^-)$  and  $\partial_\infty H_{f,i}^+ = f_\infty(J_i^+)$ .

We note the following lemma.

**Lemma 6.14.** *For any mapping class on  $S_g$  and any automorphism  $f$  of  $\pi_1(S_g)$  in its class,*

$$d_{\text{hyp}}(H_{f,0}^-, H_{f,0}^+) \geq R.$$

*Proof.* Because of the linking, any geodesic segment that connects  $H_{f,0}^-$  to  $H_{f,0}^+$  projects to an arc on  $X$  that self-intersects at least  $k$  times. By Lemma 6.13, the arc has length at least  $R$  and the lemma follows. ■

By construction,  $\bigcup_{f \in \text{Mod}(S_g)} H_{f,0}^+ = L(\gamma, s)$  and  $\bigcup_{f \in \text{Mod}(S_g)} H_{f,0}^- = \text{Mod}(S_g, p) - L(\gamma, -s)$ .

We now define the nesting segment to be the segment  $\beta = [\gamma_{-3s}, \gamma_{3s}]$ . To compare constants with feature (3) in Remark 6.1, we set  $\ell = 2s$  and reset time zero to be  $-3s$ . We then get a parameterised segment  $\beta$  of length  $3\ell$  for which the ball  $B(\beta_0, \rho)$  is contained in the complement of  $L(\beta, \ell)$ , the ball  $B(\beta_{3\ell}, \rho)$  is contained in  $L(\beta, 2\ell)$ , and  $D_{\text{Mod}(S_g, p)}(\text{Mod}(S_g, p) - L(\beta, \ell), L(\beta, 2\ell)) > R$ , as required.

**Acknowledgements.** The authors thank Samuel Taylor for bringing their paper [9] to their attention. They thank the referees for a careful perusal and for suggesting improvements in the exposition.

**Funding.** The second author is supported in part by the DFG grant HE 7523/1-1 within the SPP 2026 ‘‘Geometry at Infinity’’.

## References

- [1] M. R. Bridson and A. Haefliger, *Metric spaces of non-positive curvature*. Grundlehren Math. Wiss. 319, Springer, Berlin, 1999 Zbl 0988.53001 MR 1744486
- [2] N. Broaddus, B. Farb, and A. Putman, *Irreducible Sp-representations and subgroup distortion in the mapping class group*. *Comment. Math. Helv.* **86** (2011), no. 3, 537–556 Zbl 1295.57021 MR 2803852
- [3] J. W. Cannon and W. P. Thurston, *Group invariant Peano curves*. *Geom. Topol.* **11** (2007), 1315–1355 Zbl 1136.57009 MR 2326947
- [4] D. B. Cohen, *A Dehn function for  $\text{Sp}(2n, \mathbb{Z})$* . *J. Topol. Anal.* **9** (2017), no. 2, 225–290 Zbl 1400.20035 MR 3622234

- [5] B. Deroin, V. Kleptsyn, and A. Navas, [On the question of ergodicity for minimal group actions on the circle](#). *Mosc. Math. J.* **9** (2009), no. 2, 263–303, back matter Zbl 1193.37034 MR 2568439
- [6] S. Dowdall, M. G. Durham, C. J. Leininger, and A. Sisto, [Extensions of Veech groups I: A hyperbolic action](#). *J. Topol.* **16** (2023), no. 2, 757–805 Zbl 1522.20169 MR 4637976
- [7] V. Gadre, J. Maher, and G. Tiozzo, [Word length statistics and Lyapunov exponents for Fuchsian groups with cusps](#). *New York J. Math.* **21** (2015), 511–531 Zbl 1371.37048 MR 3368971
- [8] V. Gadre, J. Maher, and G. Tiozzo, [Word length statistics for Teichmüller geodesics and singularity of harmonic measure](#). *Comment. Math. Helv.* **92** (2017), no. 1, 1–36 Zbl 1362.32009 MR 3615033
- [9] I. Gekhtman, S. J. Taylor, and G. Tiozzo, [Counting loxodromics for hyperbolic actions](#). *J. Topol.* **11** (2018), no. 2, 379–419 Zbl 1436.20083 MR 3789828
- [10] S. Gouëzel, F. Mathéus, and F. Maucourant, [Entropy and drift in word hyperbolic groups](#). *Invent. Math.* **211** (2018), no. 3, 1201–1255 Zbl 1454.37019 MR 3763407
- [11] U. Hamenstädt and S. Hensel, [The geometry of the handlebody groups I: Distortion](#). *J. Topol. Anal.* **4** (2012), no. 1, 71–97 Zbl 1244.57034 MR 2914874
- [12] J. Maher and G. Tiozzo, [Random walks on weakly hyperbolic groups](#). *J. Reine Angew. Math.* **742** (2018), 187–239 Zbl 1434.60015 MR 3849626
- [13] H. Masur, [Closed trajectories for quadratic differentials with an application to billiards](#). *Duke Math. J.* **53** (1986), no. 2, 307–314 Zbl 0616.30044 MR 850537
- [14] H. Masur, [The growth rate of trajectories of a quadratic differential](#). *Ergodic Theory Dynam. Systems* **10** (1990), no. 1, 151–176 Zbl 0706.30035 MR 1053805
- [15] M. Mitra, [Cannon–Thurston maps for hyperbolic group extensions](#). *Topology* **37** (1998), no. 3, 527–538 Zbl 0907.20038 MR 1604882
- [16] L. Mosher, [Hyperbolic extensions of groups](#). *J. Pure Appl. Algebra* **110** (1996), no. 3, 305–314 Zbl 0851.20037 MR 1393118
- [17] A. Randecker and G. Tiozzo, [Cusp excursion in hyperbolic manifolds and singularity of harmonic measure](#). *J. Mod. Dyn.* **17** (2021), 183–211 Zbl 1468.37031 MR 4251941

Received 4 April 2022.

**Vaibhav Gadre**

School of Mathematics and Statistics, University of Glasgow, University Place, Glasgow G12 8QQ, UK; [vaibhav.gadre@glasgow.ac.uk](mailto:vaibhav.gadre@glasgow.ac.uk)

**Sebastian Hensel**

Mathematisches Institut der Universität München, Theresienstraße 39, 80333 München, Germany; [hensel@math.lmu.de](mailto:hensel@math.lmu.de)